

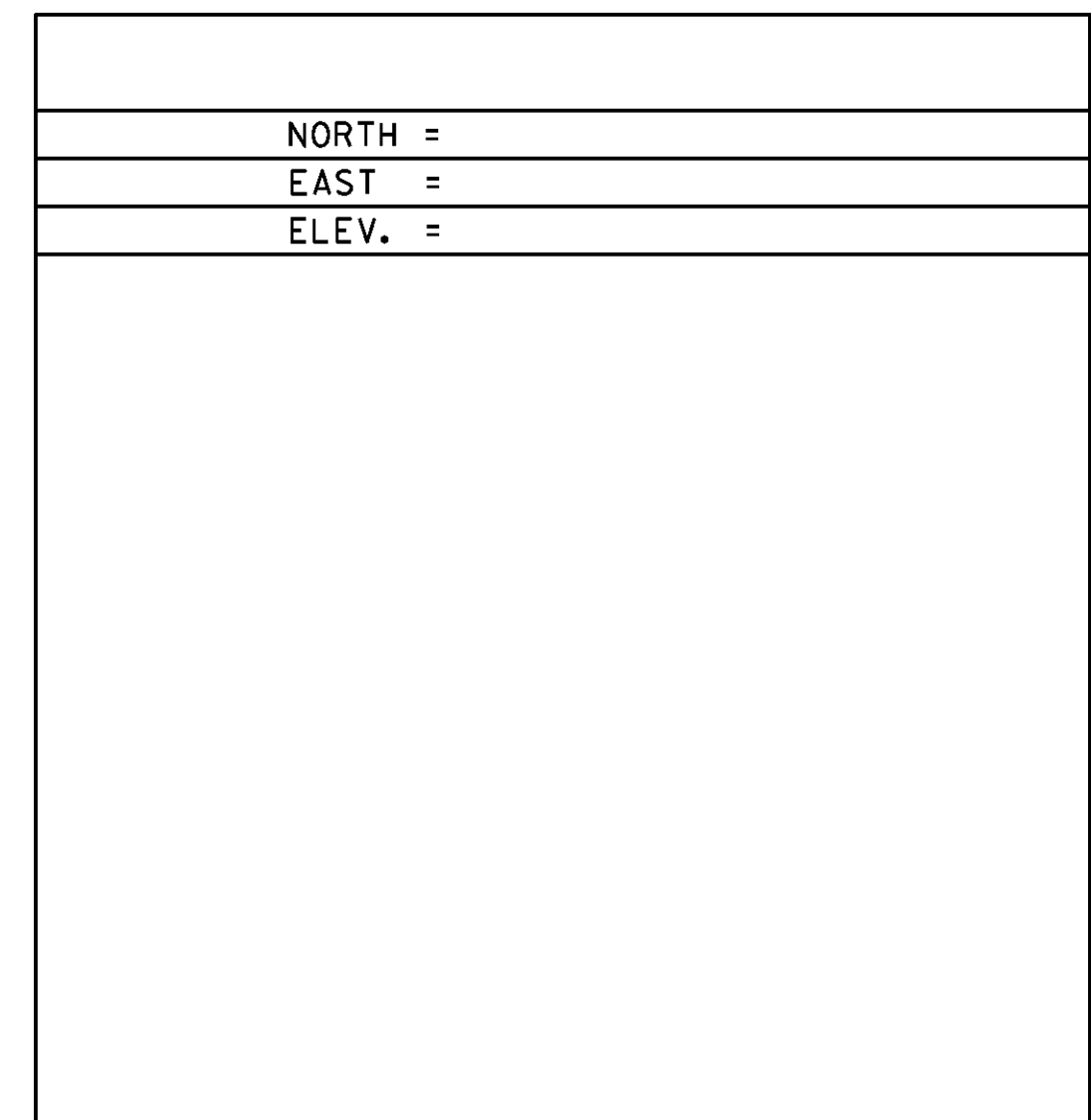
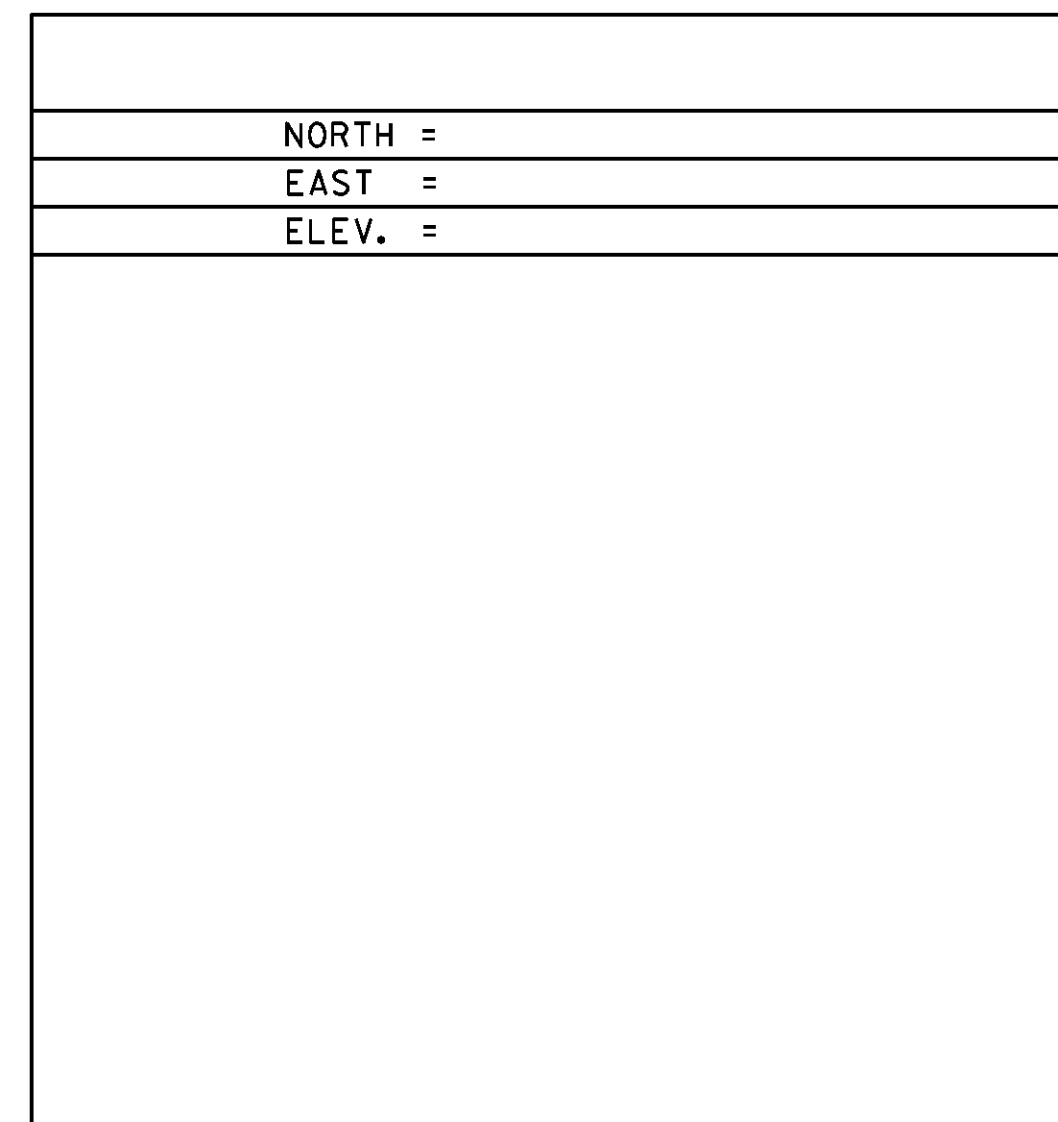
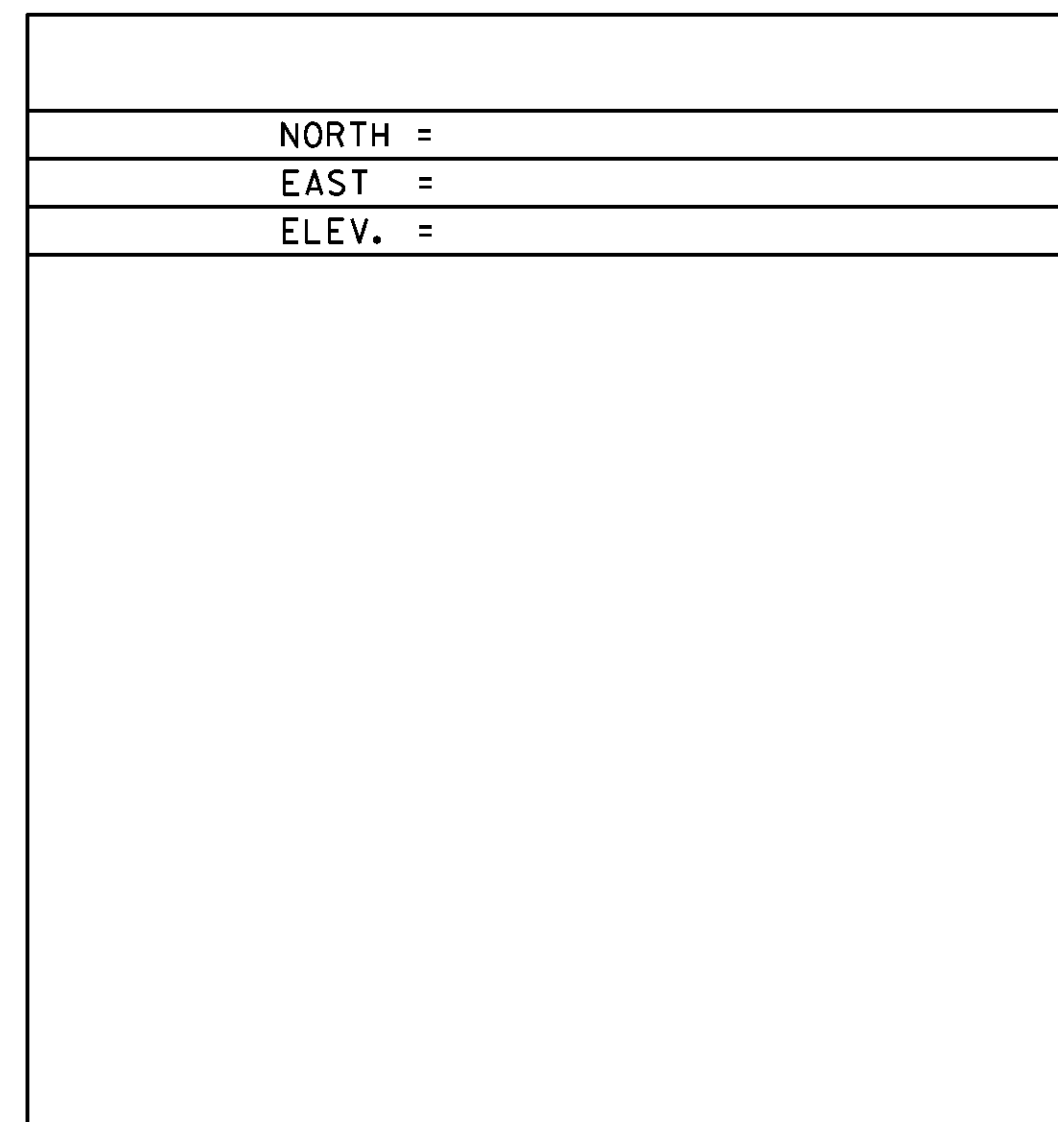
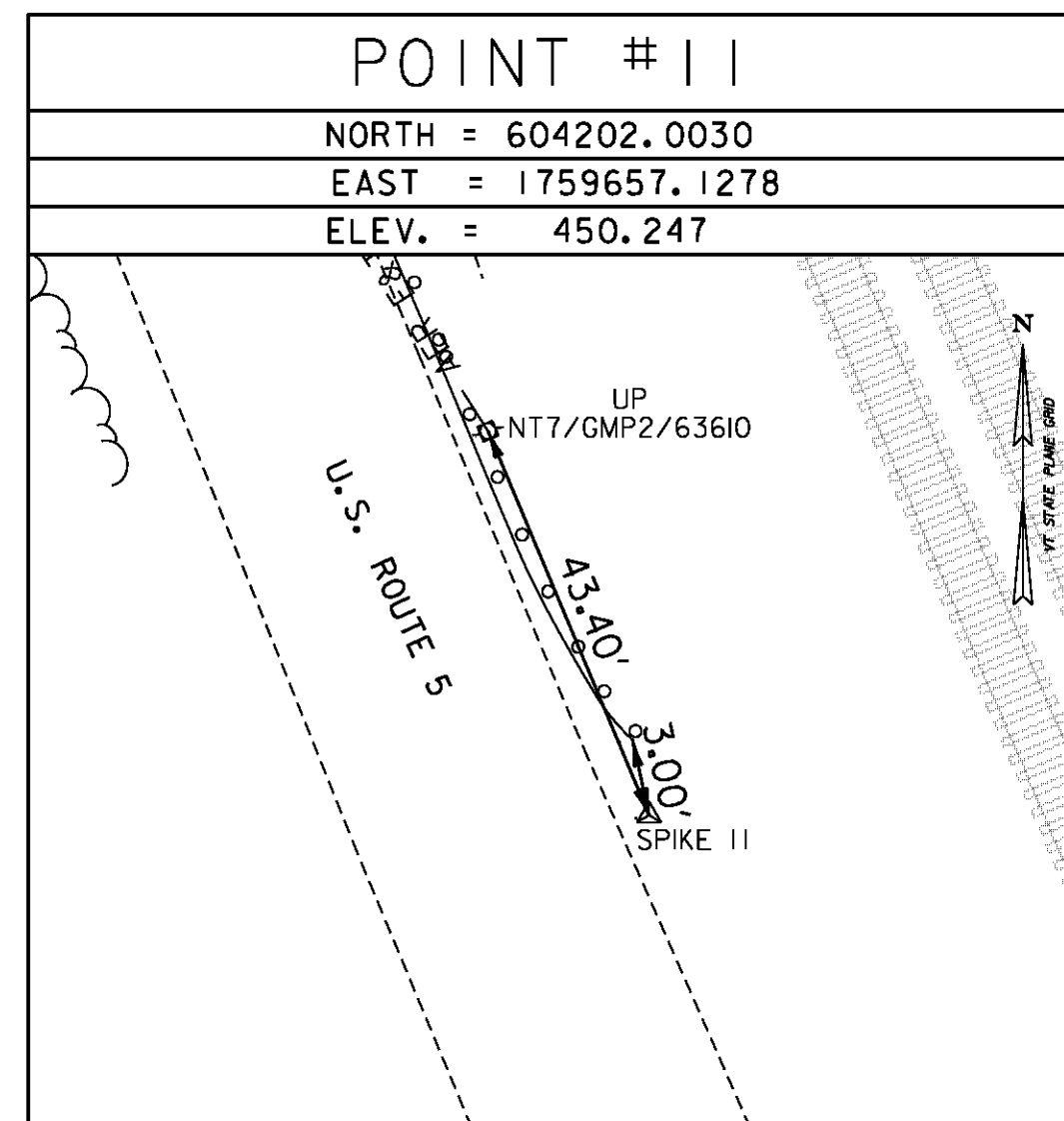
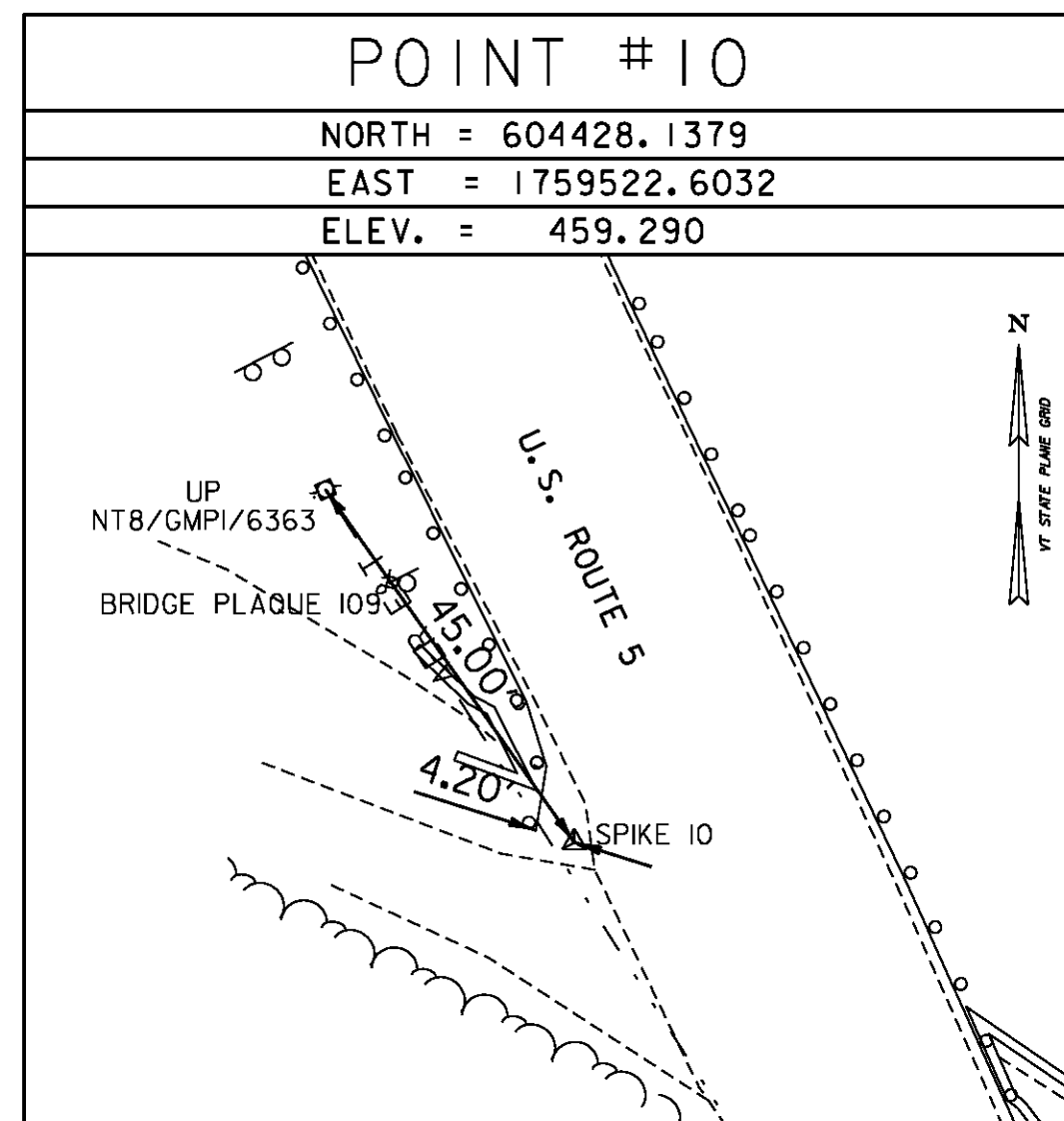
GPS CONTROL POINTS

C 57

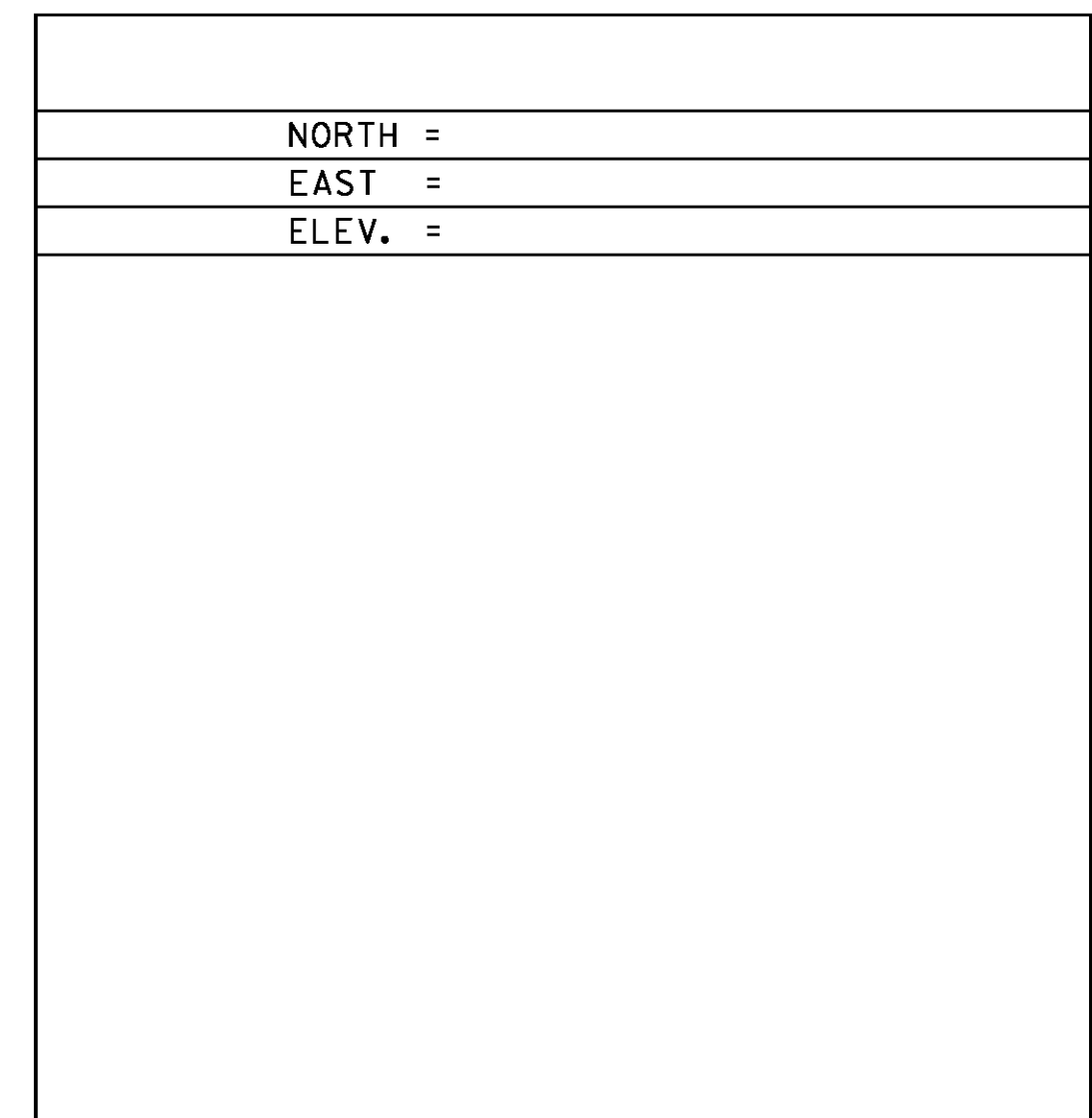
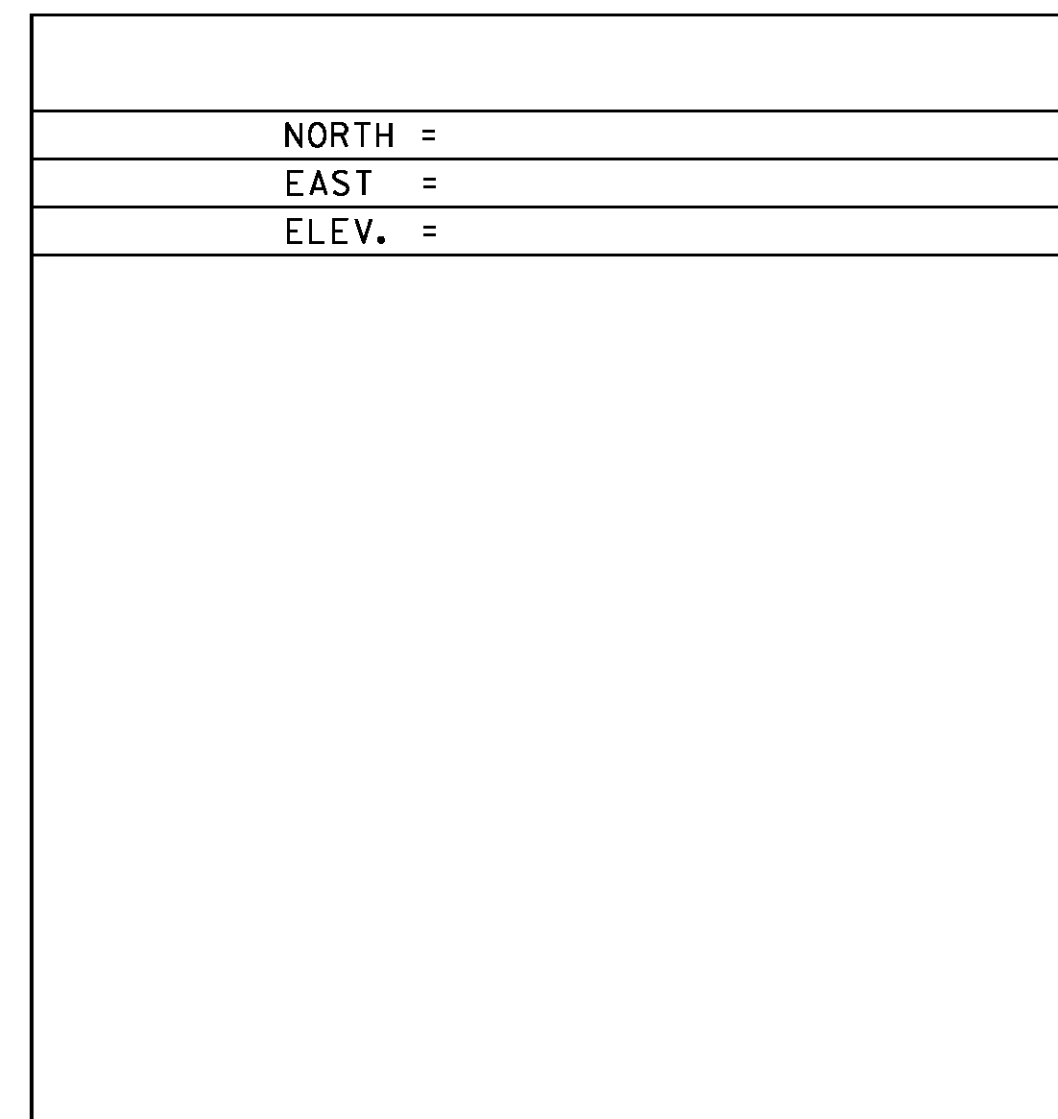
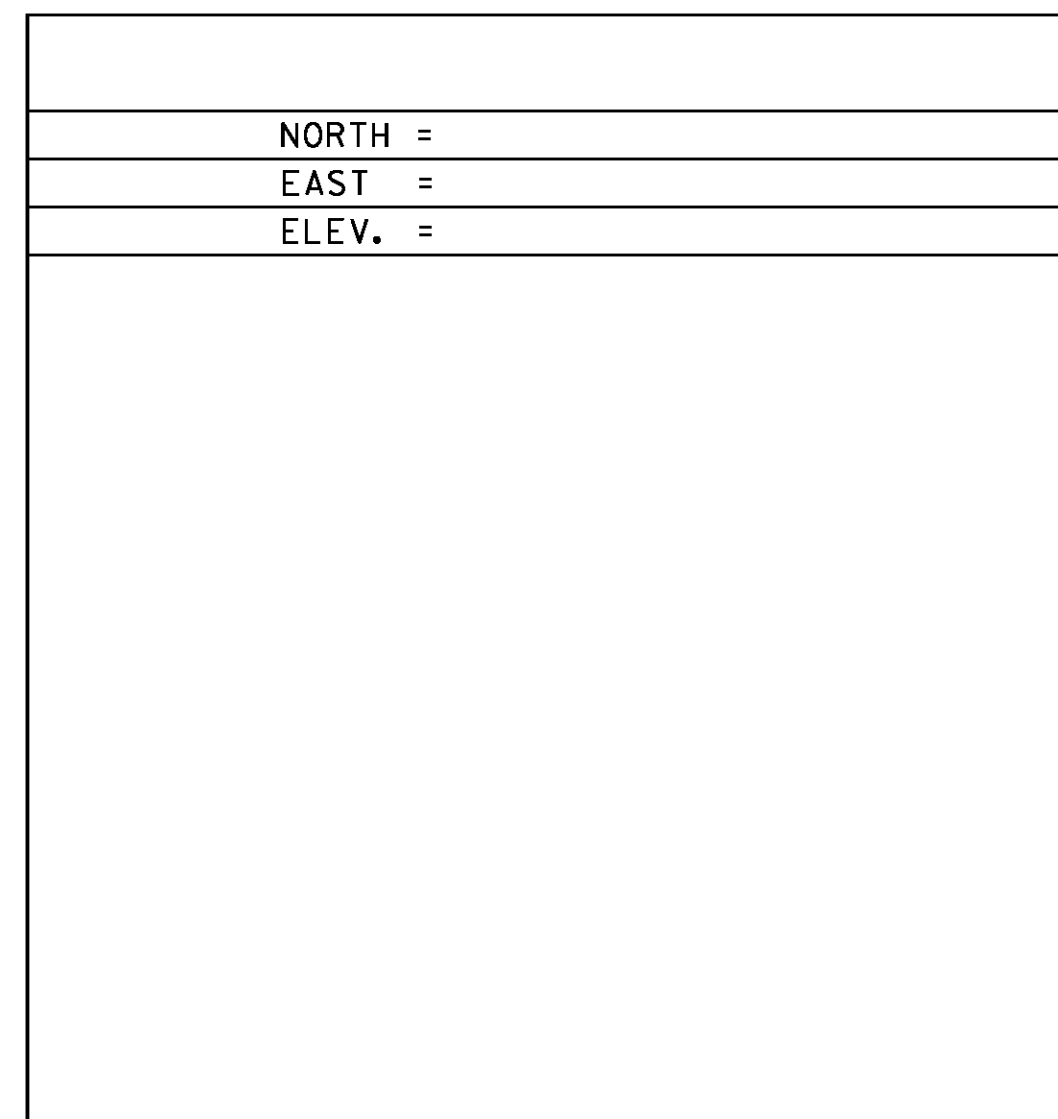
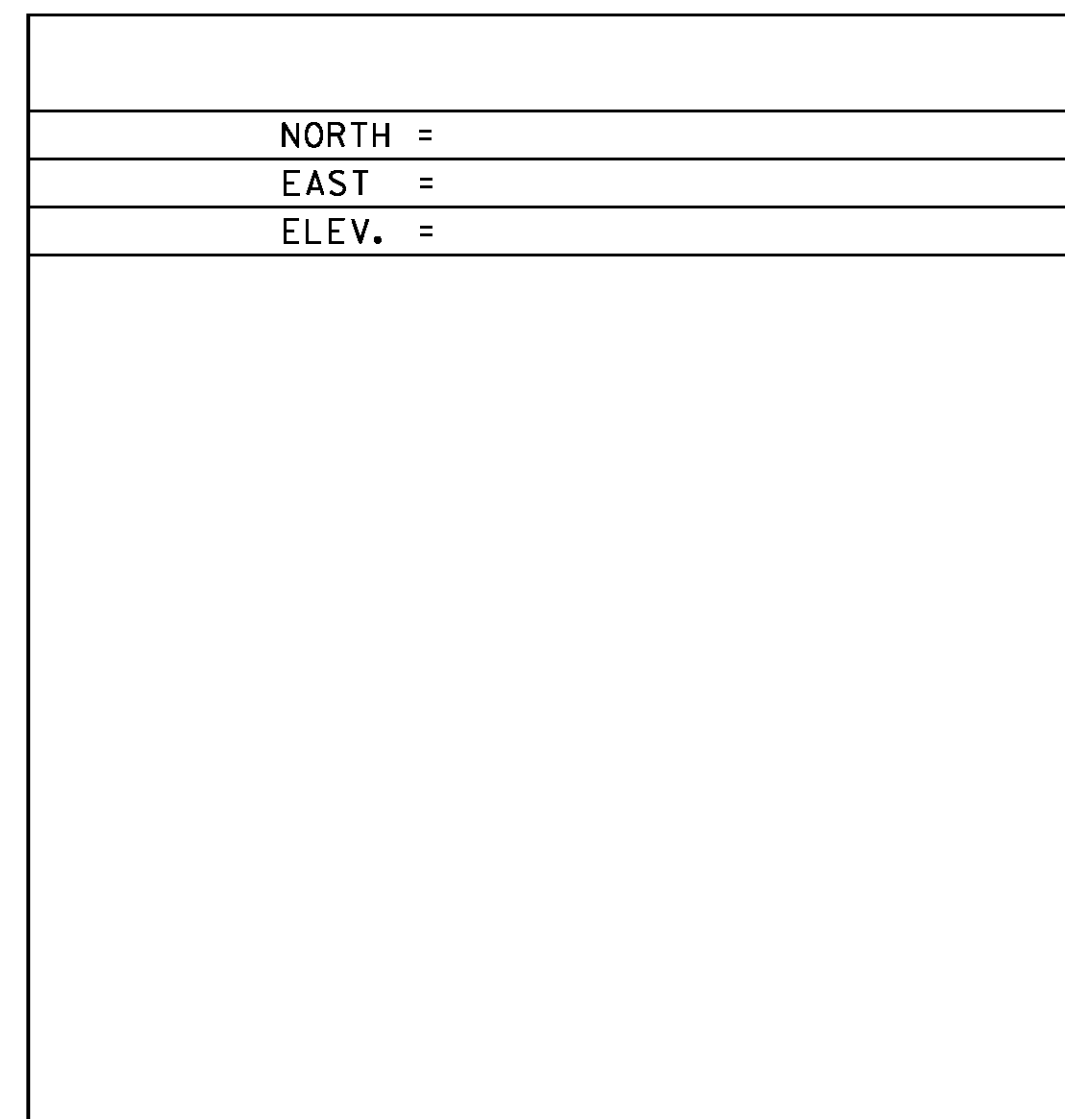
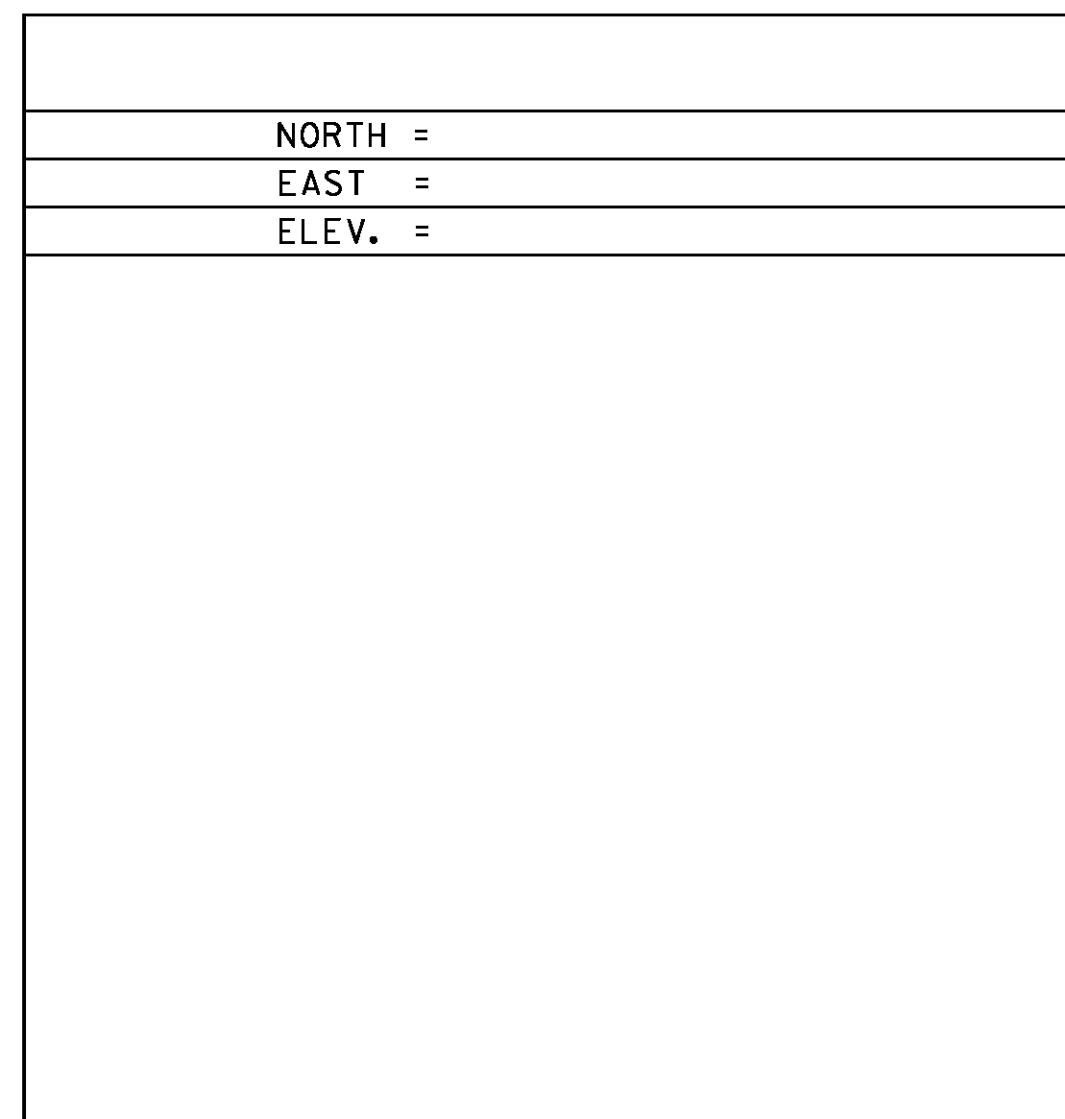
NORTH = 610233.2700  
 EAST = 1756868.5500  
 ELEV. = 488.830

RYEGATE, VT.  
 TO REACH FROM THE INTERSECTION OF US ROUTE 302 WEST AND US ROUTE 5 IN WELLS RIVER GO NORTH ALONG US ROUTE 5 FOR 1.55 MI TO THE MARK IN THE RIGHT. THE MARK IS A STANDARD NGS DISC SET INSIDE A 4 INCH PVC PIPE 6 INCHES BELOW THE TOP OF THE PIPE. IT IS 6.7 M EAST AND ABOUT 1 M LOWER THAN THE CENTER OF US ROUTE 5, 16.7 M NORTH OF THE END OF A STEEL BEAM GUARD RAIL, 8.9 M SOUTH OF THE CENTER OF A 0.9 M VERTICAL PIPE, AND 5.2 M SOUTH OF POLE NO. 37/65 AND A FIBERGLASS WITNESS POST.

TRAVERSE TIES



ALIGNMENT TIES



DATUM  
 VERTICAL NAVD88  
 HORIZONTAL VT GRID NAD83(2011)  
 ADJUSTMENT COMPASS

PROJECT NAME: BRADFORD-RYEGATE  
 PROJECT NUMBER: STP 2929(I)  
 FILE NAME: z10c2641i.dgn  
 PROJECT LEADER: P. SHEDD  
 DESIGNED BY: H. QUESADA  
 TIE SHEET 2  
 PLOT DATE: 2/4/2016  
 DRAWN BY: S. GOODWIN  
 CHECKED BY: G. BROWN  
 SHEET 5 OF 239