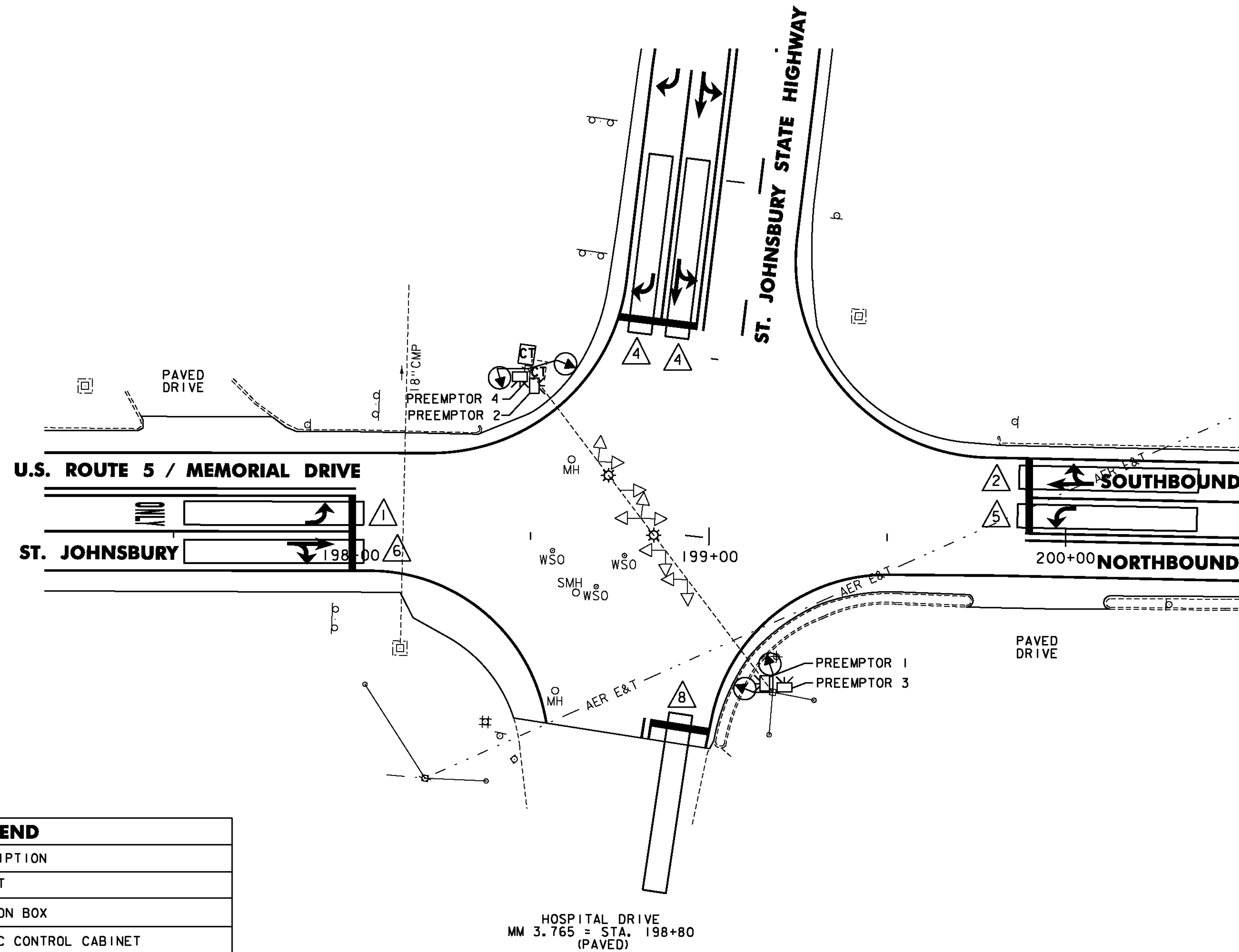


U.S. ROUTE 5 / ST. JOHNSBURY STATE HIGHWAY INTERSECTION



ITEM 900.620 SPECIAL PROVISION (REMOVE AND REPLACE TRAFFIC SIGNAL CONTROLLER AND CABINET).		
QUANTITY	UNIT	DESCRIPTION
1	EA	NAZTEC MODEL 980 OR ECONOLITE ACS/3-2100 TRAFFIC SIGNAL CONTROLLER
1	EA	NAZTEC OR ECONOLITE POLE MOUNTED CONTROLLER CABINET

LEGEND	
DESCRIPTION	
---	EXISTING CONDUIT
□	EXISTING JUNCTION BOX
□ CT	EXISTING TRAFFIC CONTROL CABINET
□ CT	PROPOSED TRAFFIC CONTROL CABINET
⊕	EXISTING POLE
□	EXISTING VIDEO DETECTION AREA
□	VIDEO DETECTION AREA
⊕	EXISTING VIDEO DETECTION CAMERA
⊕	PROPOSED VIDEO DETECTION CAMERA
⊕	EXISTING VEHICLE SIGNAL
⊕	PROPOSED VEHICLE SIGNAL
⊕ PB	EXISTING PULL BOX
⊕	EXISTING PEDESTRIAN SIGNAL
⊕	PROPOSED COUNT-DOWN PEDESTRIAN SIGNAL
⊕	PREEMPTION STROBE
⊕	OPTICAL PREEMPTION DETECTOR

	PREEMPTION TIMINGS			
	PREEMPTOR			
	1	2	3	4
DIRECTION	US 5 NB	US 5 SB	ST. JOHNSBURY S.H.	HOSPITAL DR.
HOLD PHASE	2	6	8	4
DET. LOCK	NO	NO	NO	NO
DURATION TIME	10	10	10	10
MIN. GREEN	4.0	4.0	4.0	4.0
HOLD GREEN	12.0	12.0	12.0	12.0
HOLD YELLOW	4.0	4.0	4.0	4.0
HOLD RED	2.0	2.0	2.0	2.0
RELEASE PHASE	2&6	2&6	8&4	8&4

NOT TO SCALE

SEE SHEET 128 FOR TRAFFIC SIGNAL NOTES

TRAFFIC SIGNAL SYSTEMS SHEET #1

PROJECT NAME: ST. JOHNSBURY-LYNDON
PROJECT NUMBER: STP 2928(I)

FILE NAME: p10c262.dgn
PROJECT LEADER: JLL
DESIGNED BY: MCF
IPARM FILE: p10c262tss01.i

PLOT DATE: 10/17/2013
DRAWN BY: STANTEC
CHECKED BY: JLL
SHEET 127 OF 133

