

MILLED RUMBLE STRIPS
 STA. 6+00 TO 11+00, LT

STEEL BEAM GUARDRAIL, GALVANIZED
 STA. 8+33.0 TO 9+71.0, RT
 STA. 8+49.5 TO 10+22.5, LT

TERMINAL CONNECTOR FOR STEEL BEAM GUARDRAIL
 STA. 8+08 TO 8+33, RT
 STA. 8+24.5 TO 8+49.5, LT
 FOR DETAIL, SEE SHEET 19

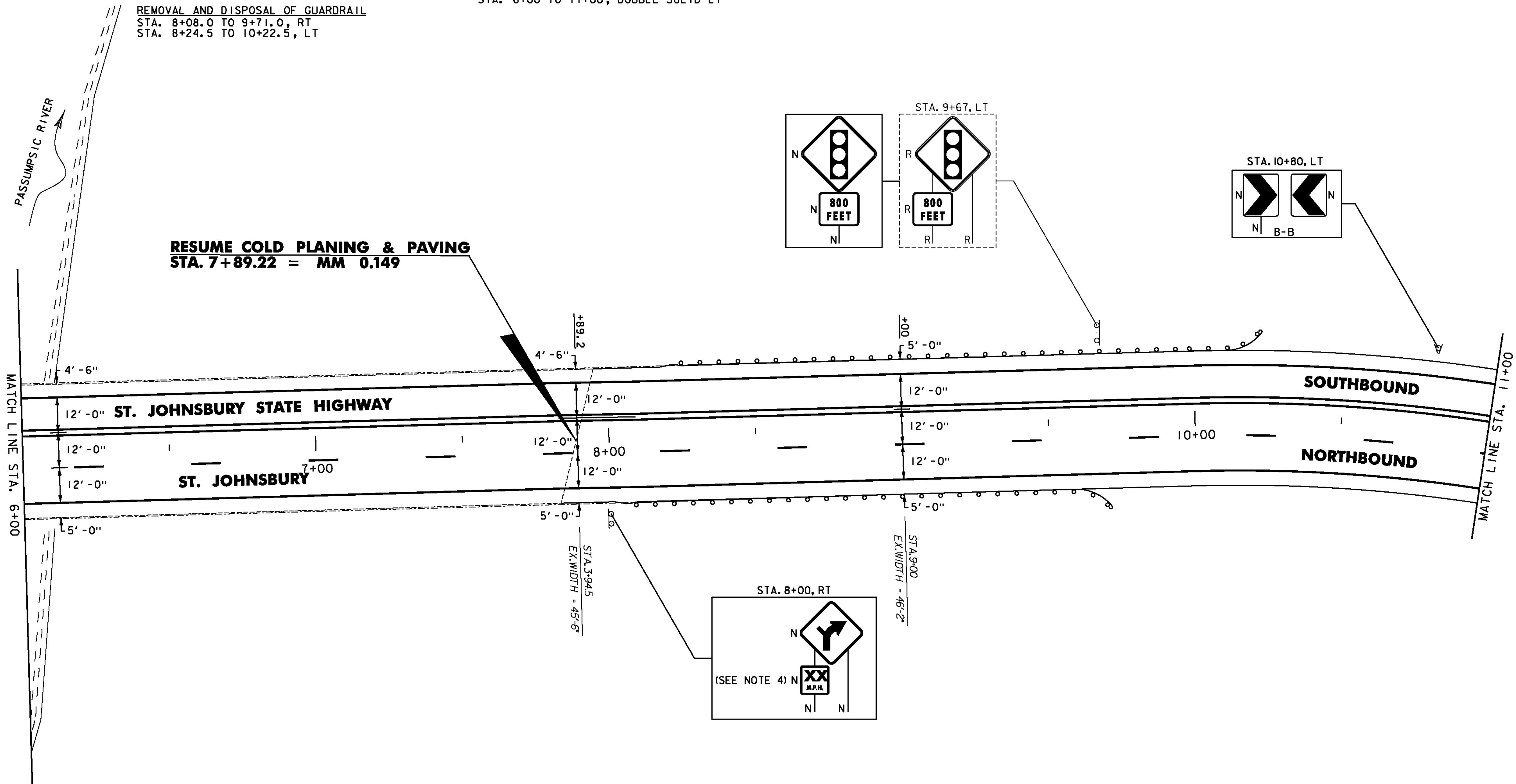
ANCHOR FOR STEEL BEAM RAIL
 STA. 9+71.0, RT
 STA. 10+22.5, LT

REMOVAL AND DISPOSAL OF GUARDRAIL
 STA. 8+08.0 TO 9+71.0, RT
 STA. 8+24.5 TO 10+22.5, LT

DURABLE & TEMPORARY 4 INCH WHITE LINE
 (ALL LINES WILL INCLUDE EDGE LINE BREAKS
 AND RADII FOR SIDE ROADS)
 STA. 6+00 TO 11+00, SOLID LT & RT
 STA. 6+00 TO 11+00, DASHED RT (LANE LINE)

DURABLE & TEMPORARY 4 INCH YELLOW LINE
 (ALL LINES WILL INCLUDE $\frac{1}{4}$ BREAKS FOR SIDE ROADS)
 STA. 6+00 TO 11+00, DOUBLE SOLID LT

REMOVING SIGNS
 AS SHOWN - 2



NOTES:

- FOR LEGENDS, SEE SHEET 33.
- ALL EXISTING SIGNS NOT SHOWN SHALL BE RETAINED.
- DURABLE MARKINGS DETAILED ON THIS SHEET ARE OPTION BID ITEMS. SEE SHEETS 6-7.
- THE ADVISORY SPEED SHALL BE DETERMINED AS DIRECTED BY THE ENGINEER USING AN ESTABLISHED ENGINEERING PRACTICE AS LISTED IN SECTION 2C.08 OF THE MUTCD.

NOT TO SCALE

PROJECT LAYOUT SHEET #50



PROJECT NAME: ST. JOHNSBURY-LYNDON

PROJECT NUMBER: STP 2928(I)

FILE NAME: p10c262.dgn

PROJECT LEADER: JLL

DESIGNED BY: MCF

IPARM FILE: p10c262150.i

PLOT DATE: 10/17/2013

DRAWN BY: STANTEC

CHECKED BY: JLL

SHEET 82 OF 133