

MILLED RUMBLE STRIPS
STA. 390+00 TO 395+00, C
(BREAK FOR SIDE ROADS PER
DETAIL ON SHEET 27)

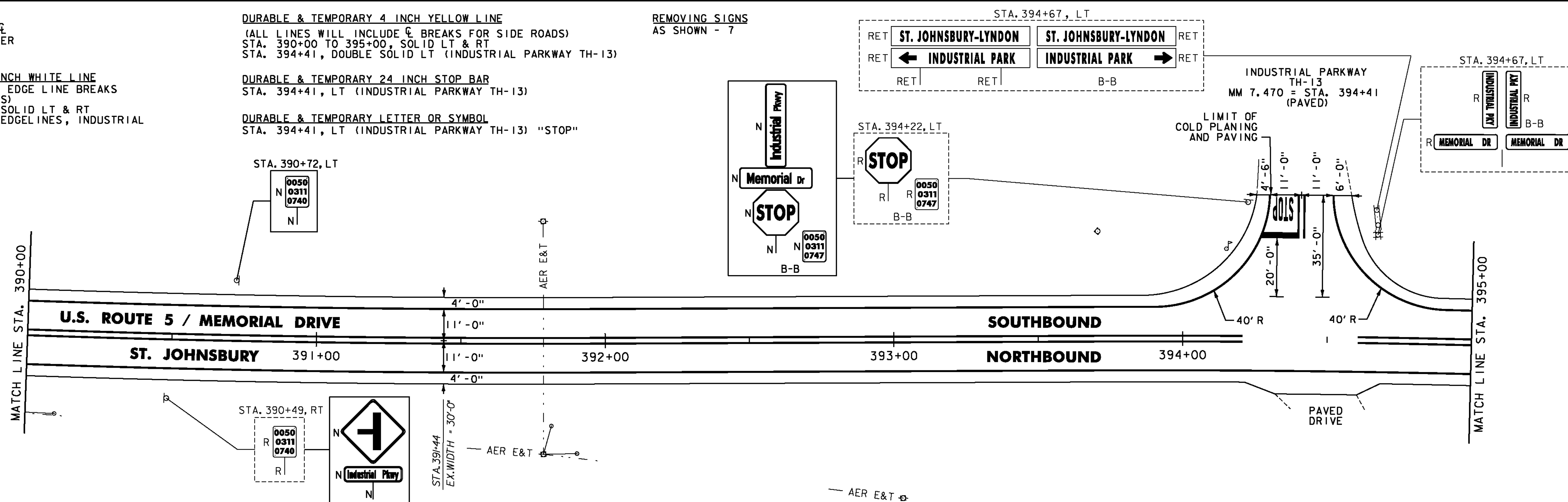
DURABLE & TEMPORARY 4 INCH WHITE LINE
(ALL LINES WILL INCLUDE EDGE LINE BREAKS
AND RADI1 FOR SIDE ROADS)
STA. 390+00 TO 395+00, SOLID LT & RT
STA. 394+41, SOLID LT (EDGE LINES, INDUSTRIAL
PARKWAY TH-13)

DURABLE & TEMPORARY 4 INCH YELLOW LINE
(ALL LINES WILL INCLUDE C BREAKS FOR SIDE ROADS)
STA. 390+00 TO 395+00, SOLID LT & RT
STA. 394+41, DOUBLE SOLID LT (INDUSTRIAL PARKWAY TH-13)

DURABLE & TEMPORARY 24 INCH STOP BAR
STA. 394+41, LT (INDUSTRIAL PARKWAY TH-13)

DURABLE & TEMPORARY LETTER OR SYMBOL
STA. 394+41, LT (INDUSTRIAL PARKWAY TH-13) "STOP"

REMOVING SIGNS
AS SHOWN - 7

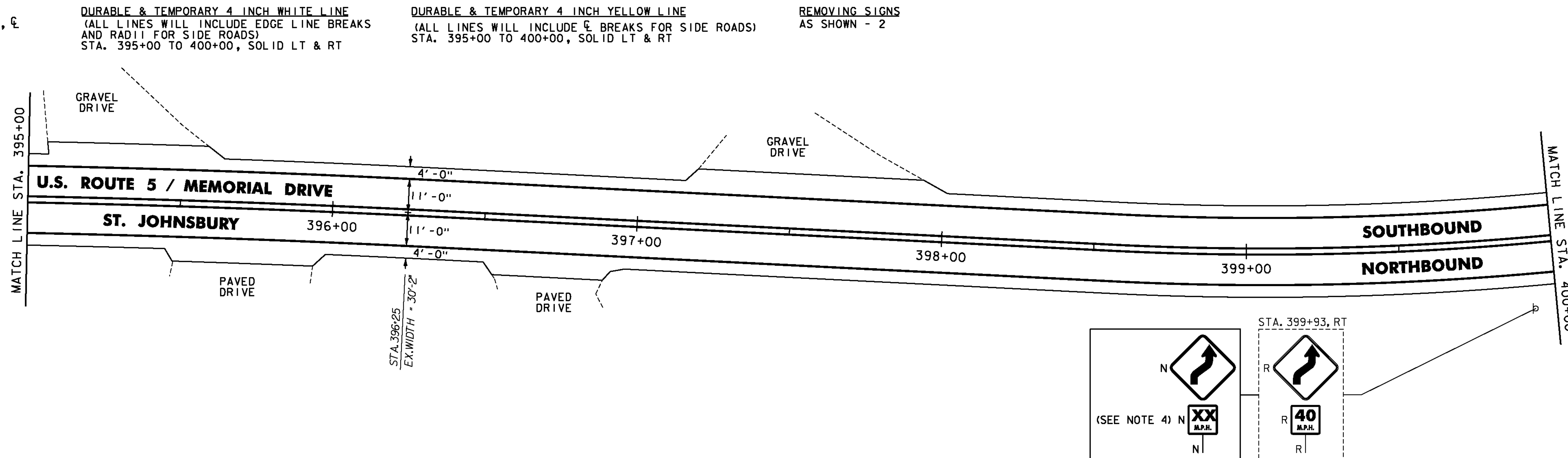


MILLED RUMBLE STRIPS
STA. 395+00 TO 400+00, C

DURABLE & TEMPORARY 4 INCH WHITE LINE
(ALL LINES WILL INCLUDE EDGE LINE BREAKS
AND RADI1 FOR SIDE ROADS)
STA. 395+00 TO 400+00, SOLID LT & RT

DURABLE & TEMPORARY 4 INCH YELLOW LINE
(ALL LINES WILL INCLUDE C BREAKS FOR SIDE ROADS)
STA. 395+00 TO 400+00, SOLID LT & RT

REMOVING SIGNS
AS SHOWN - 2



NOTES:

- FOR LEGENDS, SEE SHEET 33.
- ALL EXISTING SIGNS NOT SHOWN SHALL BE RETAINED.
- DURABLE MARKINGS DETAILED ON THIS SHEET ARE OPTION BID ITEMS. SEE SHEETS 6-7.
- THE ADVISORY SPEED SHALL BE DETERMINED AS DIRECTED BY THE ENGINEER USING AN ESTABLISHED ENGINEERING PRACTICE AS LISTED IN SECTION 2C.08 OF THE MUTCD.

NOT TO SCALE



**PROJECT
LAYOUT
SHEET #29**

PROJECT NAME: ST. JOHNSBURY-LYNDON

PROJECT NUMBER: STP 2928(I)

FILE NAME: p10c262.dgn

PROJECT LEADER: JLL

DESIGNED BY: MCF

IPARM FILE: p10c262129.i

PLOT DATE: 10/17/2013

DRAWN BY: STANTEC

CHECKED BY: JLL

SHEET 61 OF 133