

MILLED RUMBLE STRIPS
STA. 273+00 TO 278+00, C

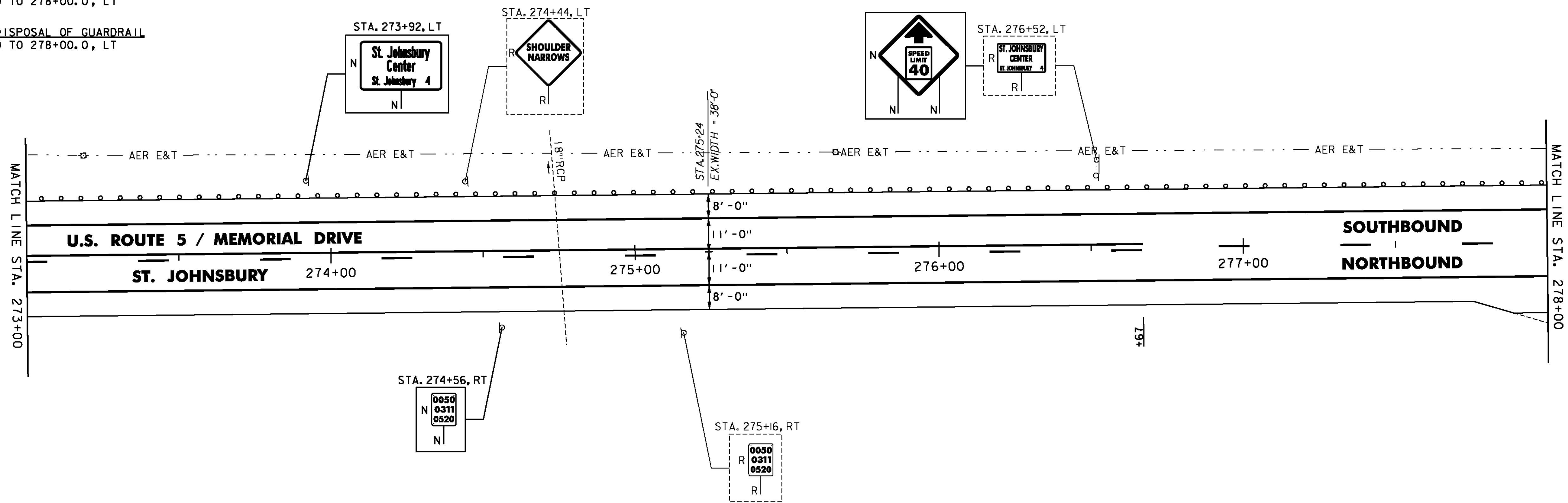
STEEL BEAM GUARDRAIL, GALVANIZED
STA. 273+00.0 TO 278+00.0, LT

REMOVAL AND DISPOSAL OF GUARDRAIL
STA. 273+00.0 TO 278+00.0, LT

DURABLE & TEMPORARY 4 INCH WHITE LINE
(ALL LINES WILL INCLUDE EDGE LINE BREAKS
AND RADII FOR SIDE ROADS)
STA. 273+00 TO 278+00, SOLID LT & RT

DURABLE & TEMPORARY 4 INCH YELLOW LINE
(ALL LINES WILL INCLUDE C BREAKS FOR SIDE ROADS)
STA. 273+00 TO 276+67, SOLID LT, DASHED RT
STA. 276+67 TO 278+00, DASHED C

REMOVING SIGNS
AS SHOWN - 3



MILLED RUMBLE STRIPS
STA. 278+00 TO 283+00, C

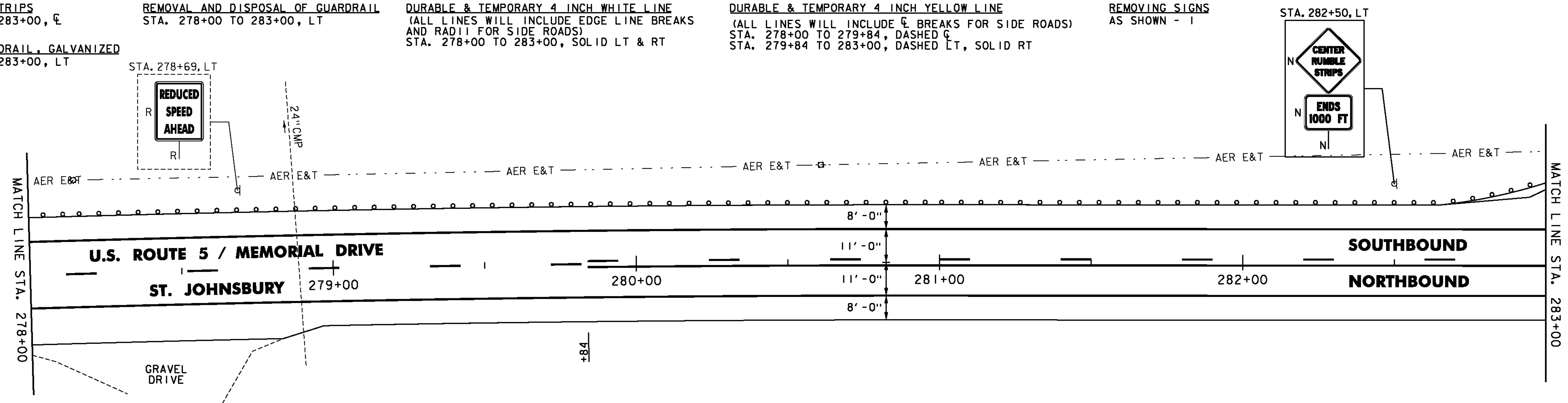
STEEL BEAM GUARDRAIL, GALVANIZED
STA. 278+00 TO 283+00, LT

REMOVAL AND DISPOSAL OF GUARDRAIL
STA. 278+00 TO 283+00, LT

DURABLE & TEMPORARY 4 INCH WHITE LINE
(ALL LINES WILL INCLUDE EDGE LINE BREAKS
AND RADII FOR SIDE ROADS)
STA. 278+00 TO 283+00, SOLID LT & RT

DURABLE & TEMPORARY 4 INCH YELLOW LINE
(ALL LINES WILL INCLUDE C BREAKS FOR SIDE ROADS)
STA. 278+00 TO 279+84, DASHED C
STA. 279+84 TO 283+00, DASHED LT, SOLID RT

REMOVING SIGNS
AS SHOWN - 1



NOTES:

- FOR LEGENDS, SEE SHEET 33.
- ALL EXISTING SIGNS NOT SHOWN SHALL BE RETAINED.
- DURABLE MARKINGS DETAILED ON THIS SHEET ARE OPTION BID ITEMS. SEE SHEETS 6-7.

NOT TO SCALE



PROJECT LAYOUT SHEET #17

PROJECT NAME: ST. JOHNSBURY-LYNDON

PROJECT NUMBER: STP 2928(I)

FILE NAME: p10c262.dgn

PROJECT LEADER: JLL

DESIGNED BY: MCF

IPARM FILE: p10c262i17.i

PLOT DATE: 10/17/2013

DRAWN BY: STANTEC

CHECKED BY: JLL

SHEET 49 OF 133