

STEEL BEAM GUARDRAIL, GALVANIZED
 STA. 230+00 TO 231+45, LT
 STA. 232+20 TO 232+57, LT

HD STEEL BEAM GUARDRAIL, GALVANIZED
 STA. 231+45 TO 231+65, LT
 STA. 231+95 TO 232+20, LT
 (FOR DETAIL, SEE SHEET 21)

ANCHOR FOR STEEL BEAM RAIL
 STA. 232+57, LT

REMOVAL AND DISPOSAL OF GUARDRAIL
 STA. 230+00 TO 231+65, LT
 STA. 231+94 TO 232+57, LT

4 INCH WHITE LINE
 STA. 231+84, SOLID LT (EDGELINES, DEPOT HILL RD TH-85)

4 INCH YELLOW LINE
 STA. 231+84, DOUBLE SOLID LT (DEPOT HILL RD TH-85)

24 INCH STOP BAR
 STA. 231+84, LT (DEPOT HILL RD)

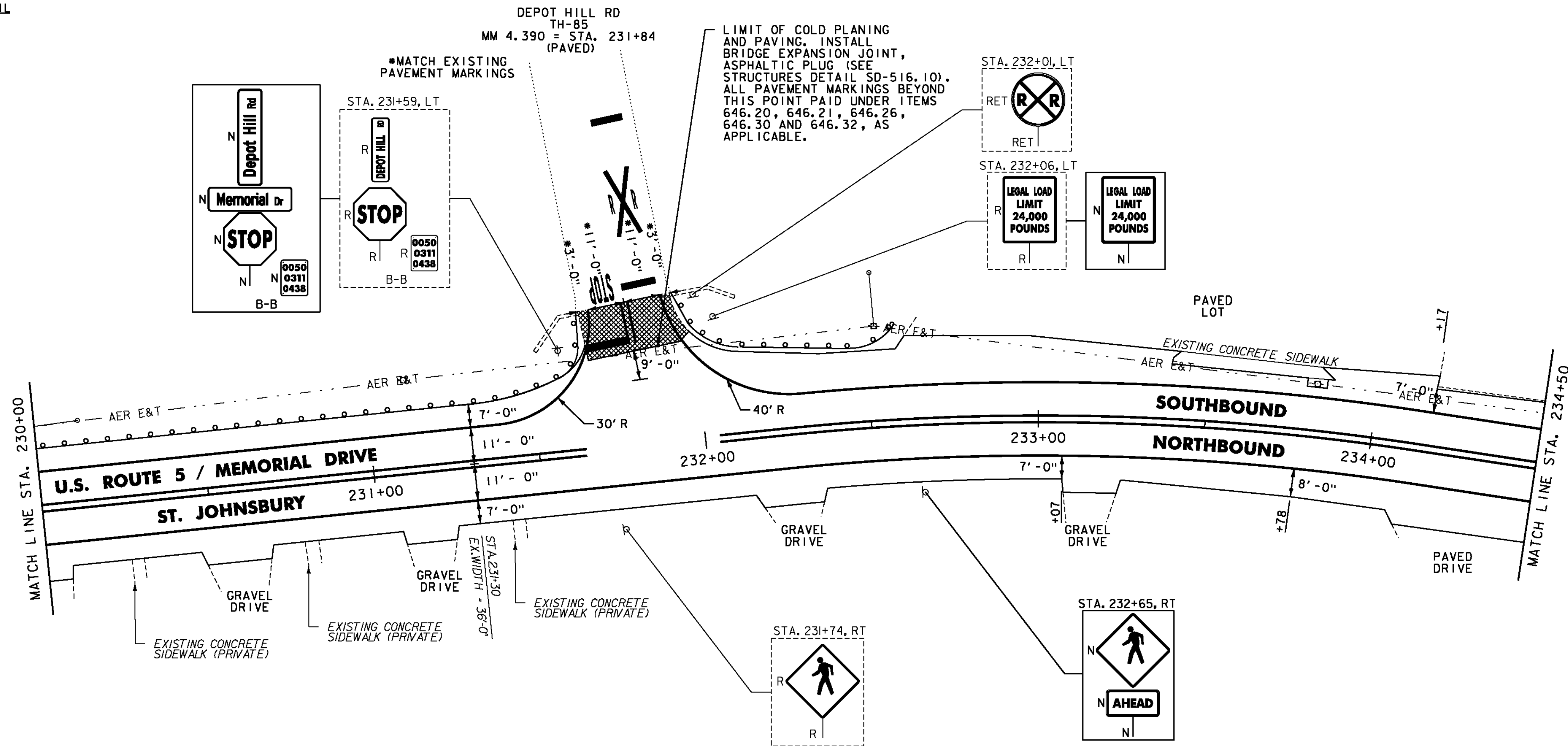
LETTER OR SYMBOL
 STA. 231+84, LT "STOP" (DEPOT HILL RD)

RAILROAD CROSSING SYMBOL
 STA. 231+84, LT (DEPOT HILL RD TH-85)

DURABLE & TEMPORARY 4 INCH WHITE LINE
 (ALL LINES WILL INCLUDE EDGE LINE BREAKS AND RADI FOR SIDE ROADS)
 STA. 230+00 TO 231+67, SOLID LT
 STA. 230+00 TO 234+50, SOLID RT
 STA. 231+96 TO 234+50, SOLID LT

REMOVING SIGNS
 AS SHOWN - 5

DURABLE & TEMPORARY 4 INCH YELLOW LINE
 (ALL LINES WILL INCLUDE C BREAKS FOR SIDE ROADS)
 STA. 230+00 TO 234+50, SOLID LT & RT



NOTES:

- FOR LEGENDS, SEE SHEET 33.
- ALL EXISTING SIGNS NOT SHOWN SHALL BE RETAINED.
- DURABLE MARKINGS DETAILED ON THIS SHEET ARE OPTION BID ITEMS. SEE SHEETS 6-7.

EXISTING CONCRETE APPROACH SLAB

NOT TO SCALE

PROJECT LAYOUT SHEET #10



PROJECT NAME: ST. JOHNSBURY-LYNDON

PROJECT NUMBER: STP 2928(I)

FILE NAME: p10c262.dgn

PROJECT LEADER: JLL

DESIGNED BY: MCF

IPARM FILE: p10c262i10.i

PLOT DATE: 10/17/2013

DRAWN BY: STANTEC

CHECKED BY: JLL

SHEET 42 OF 133