

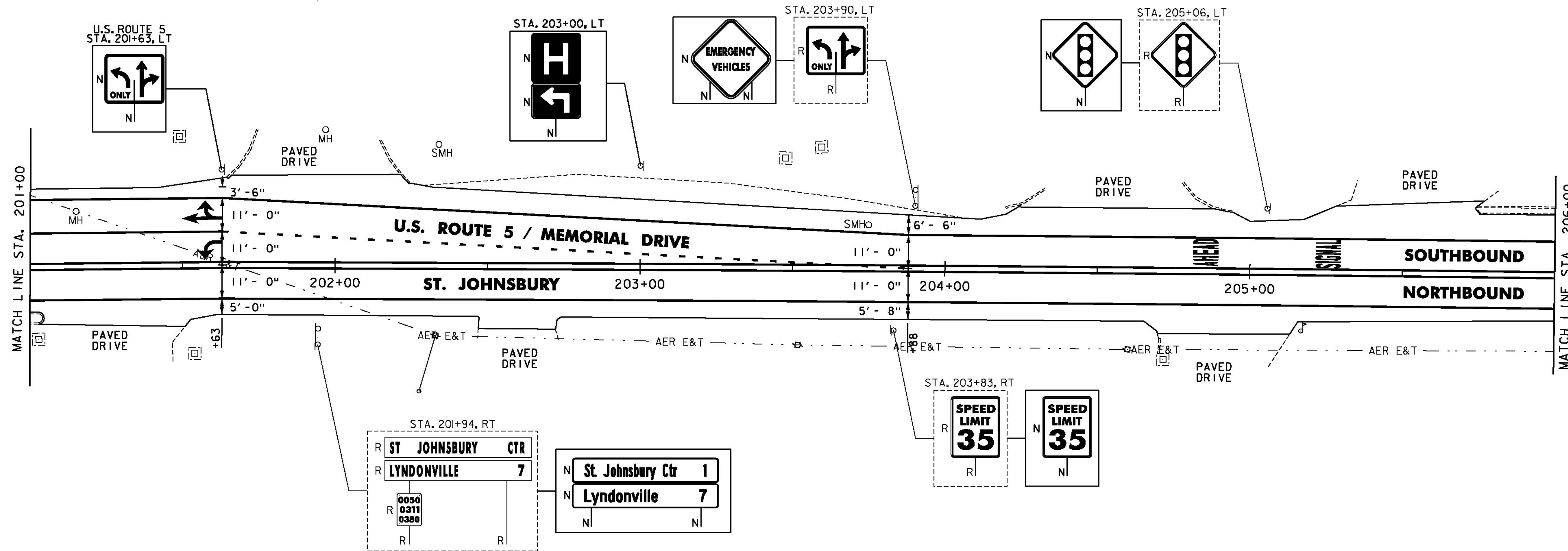
REHAB. Dis, CBs OR MHS, CLASS I OR II
 STA. 201+15, LT
 CHANGING ELEVATION OF SEWER MANHOLES
 STA. 203+75, LT

DURABLE & TEMPORARY 4 INCH WHITE LINE
 (ALL LINES WILL INCLUDE EDGE LINE BREAKS
 AND RADIUS FOR SIDE ROADS)
 STA. 201+00 TO 206+00, SOLID LT & RT
 STA. 201+00 TO 201+63, SOLID LT (LANE LINE)
 STA. 201+63 TO 203+88, DOTTED LT

DURABLE & TEMPORARY 4 INCH YELLOW LINE
 (ALL LINES WILL INCLUDE C BREAKS FOR SIDE ROADS)
 STA. 201+00 TO 206+00, SOLID LT & RT

DURABLE & TEMPORARY LETTER OR SYMBOL
 STA. 201+56.5, LT ARROW (2)
 STA. 201+59, LT ARROW
 STA. 204+86, LT "AHEAD"
 STA. 205+26, LT "SIGNAL"

REMOVING SIGNS
 AS SHOWN - 6



REHAB. Dis, CBs OR MHS, CLASS I OR II
 STA. 211+05, RT
 CHANGING ELEVATION OF SEWER MANHOLES
 STA. 206+10, LT
 STA. 207+92, LT

ANCHOR FOR STEEL BEAM RAIL
 STA. 208+70, LT
 REMOVAL AND DISPOSAL OF GUARDRAIL
 STA. 208+70 TO 211+25, LT
 ADJUST ELEVATION OF VALVE BOX
 STA. 206+26, RT
 STA. 208+30, RT

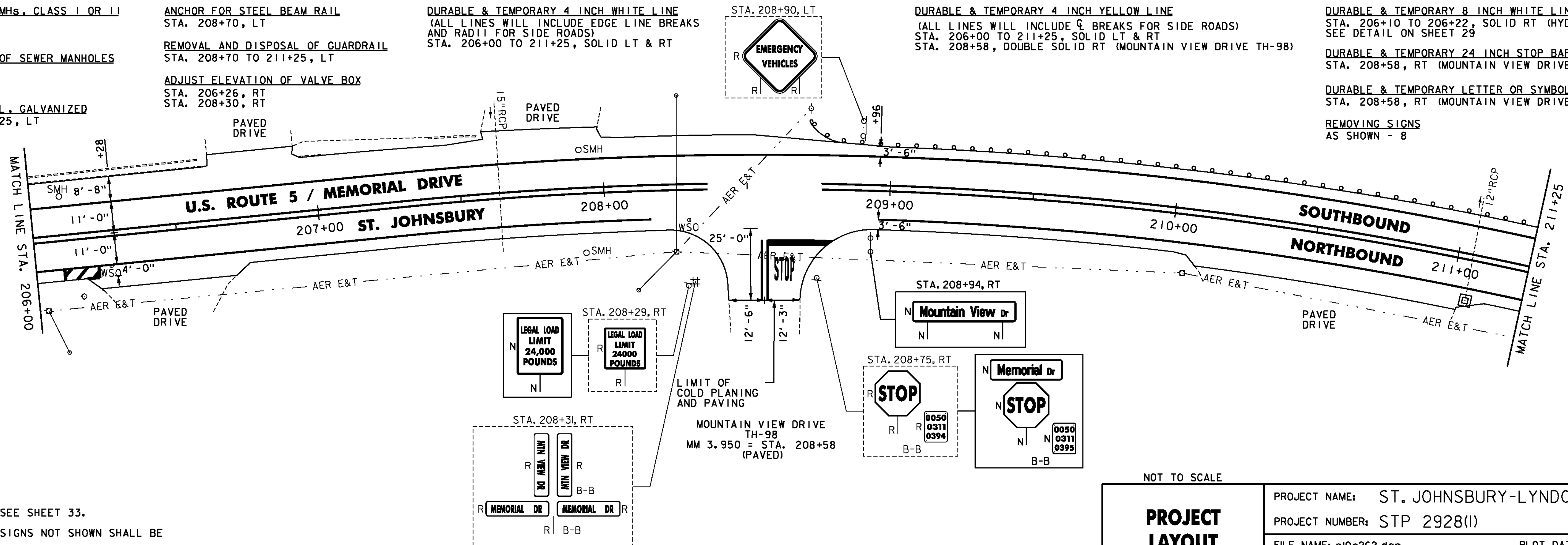
DURABLE & TEMPORARY 4 INCH WHITE LINE
 (ALL LINES WILL INCLUDE EDGE LINE BREAKS
 AND RADIUS FOR SIDE ROADS)
 STA. 206+00 TO 211+25, SOLID LT & RT

DURABLE & TEMPORARY 4 INCH YELLOW LINE
 (ALL LINES WILL INCLUDE C BREAKS FOR SIDE ROADS)
 STA. 206+00 TO 211+25, SOLID LT & RT

DURABLE & TEMPORARY 8 INCH WHITE LINE
 STA. 206+10 TO 206+22, SOLID RT (HYDRANT)
 SEE DETAIL ON SHEET 29
 DURABLE & TEMPORARY 24 INCH STOP BAR
 STA. 208+58, RT (MOUNTAIN VIEW DRIVE TH-98)
 DURABLE & TEMPORARY LETTER OR SYMBOL
 STA. 208+58, RT (MOUNTAIN VIEW DRIVE TH-98) "STOP"

REMOVING SIGNS
 AS SHOWN - 8

STEEL BEAM GUARDRAIL, GALVANIZED
 STA. 208+70 TO 211+25, LT



- NOTES:
- FOR LEGENDS, SEE SHEET 33.
 - ALL EXISTING SIGNS NOT SHOWN SHALL BE RETAINED.
 - DURABLE MARKINGS DETAILED ON THIS SHEET ARE OPTION BID ITEMS. SEE SHEETS 6-7.

NOT TO SCALE

PROJECT LAYOUT SHEET #7

PROJECT NAME: ST. JOHNSBURY-LYNDON
 PROJECT NUMBER: STP 2928(I)
 FILE NAME: p10c262.dgn
 PROJECT LEADER: JLL
 DESIGNED BY: MCF
 IPARM FILE: p10c262107.i
 PLOT DATE: 10/17/2013
 DRAWN BY: STANTEC
 CHECKED BY: JLL
 SHEET 39 OF 133

