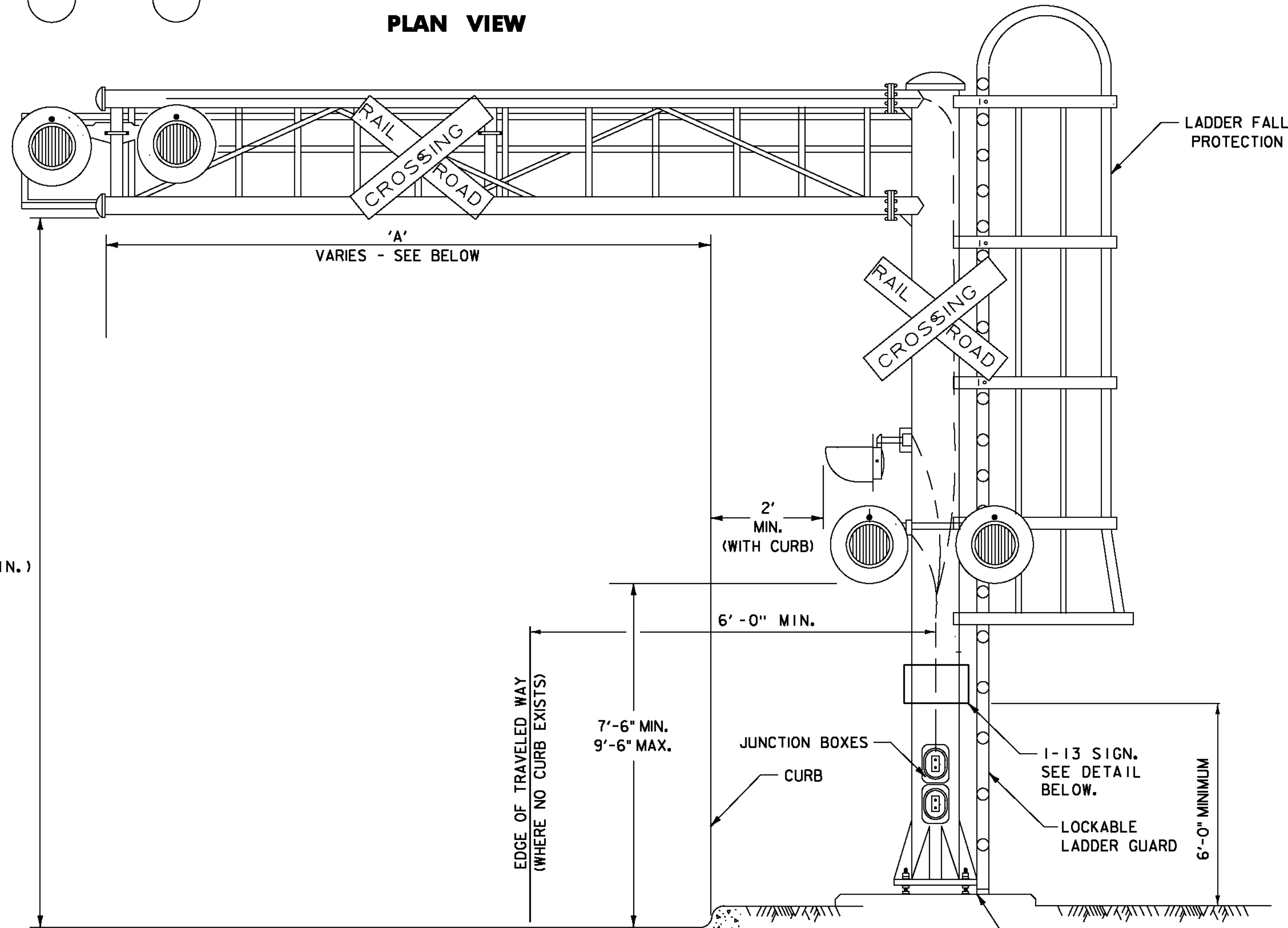


PLAN VIEW

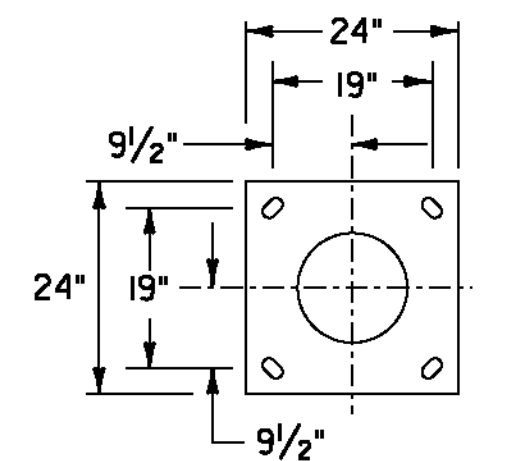


ELEVATION VIEW  
CANTILEVER SIGNAL SUPPORT WITH CATWALK

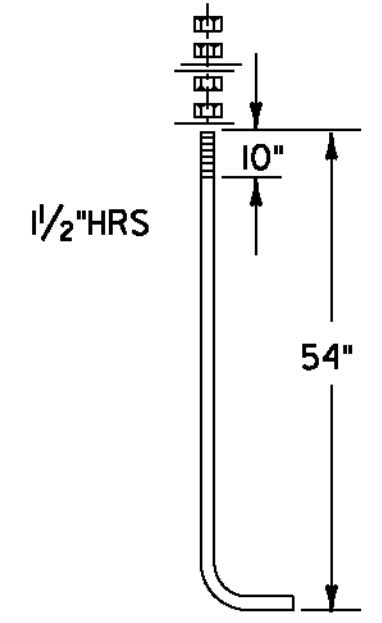
U.S. ROUTE 5 LYNDON STA. 94+07, RT - 'A' = 11'-0"  
U.S. ROUTE 5 LYNDON STA. 95+38, LT - 'A' = 13'-0"

CANTILEVER SUPPORT NOTES

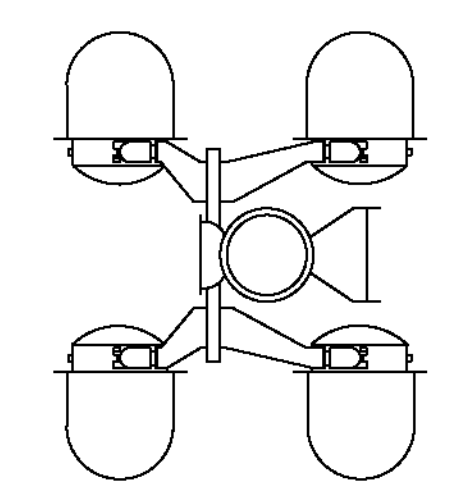
1. A STRIP OF ASTM D 4956 TYPE III OR TYPE V RETROREFLECTIVE WHITE MATERIAL NOT LESS THAN 2 INCHES IN WIDTH, SHALL BE USED ON EACH SUPPORT AT HIGHWAY-RAIL GRADE CROSSING FOR THE FULL LENGTH OF THE FRONT AND BACK OF THE SUPPORT FROM THE CROSSBUCK SIGN OR NUMBER OF TRACKS SIGN TO NEAR GROUND LEVEL.
2. PLACE A MINIMUM OF (3) 1-13 SIGNS AT EACH CROSSING. ONE ON EACH SIDE OF THE CROSSING AND ONE ON THE SIGNAL CASE OR HOUSE. FOR SIGN DETAIL, SEE BELOW.
3. FLASHING LIGHT SIGNAL EQUIPMENT SHALL BE 12" LED FLASHING LIGHT UNITS.
4. ALL MAST LIGHTS AND SIGNS SHALL BE MOUNTED TO MAST BY CLAMPS.
5. ALL MOUNTING BOLTS TO BE HIGH STRENGTH A-325 STEEL.
6. CROSSARM JUNCTION BOX SHALL FACE WALKWAY.
7. HEAVY DUTY WALKWAY SHALL SUPPORT LOADS PER AASHTO.
8. HAND RAIL SHALL BE MIN. 30" HIGH WITH INTERMEDIATE HANDRAIL SET AT 18".
9. THE CANTILEVER SIGNAL SYSTEM SHALL MEET OR EXCEED ALL AAR AND AASHTO STRUCTURAL REQUIREMENTS.
10. THE CANTILEVER SIGNAL SYSTEM SHALL HAVE A MINIMUM ROAD CLEARANCE OF 17'-6".
11. HOLES FOR ADDITIONAL LIGHTS SHALL BE DRILLED IN FIELD.
12. CONTRACTOR MAY ELECT TO SUBMIT PLANS FOR CAST IN PLACE FOUNDATION IN PLACE OF PRECAST.
13. FOR ADDITIONAL SIGNAL SYSTEM NOTES, SEE NEXT SHEET.



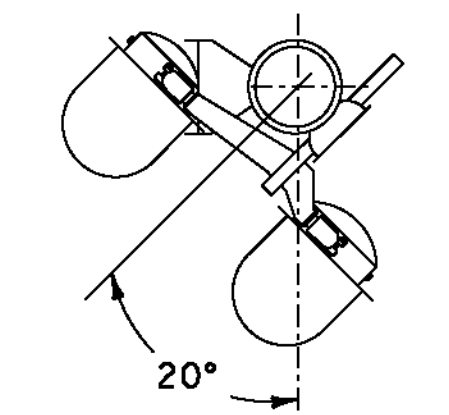
BASE PLATE DETAIL



ANCHOR BOLT DETAIL

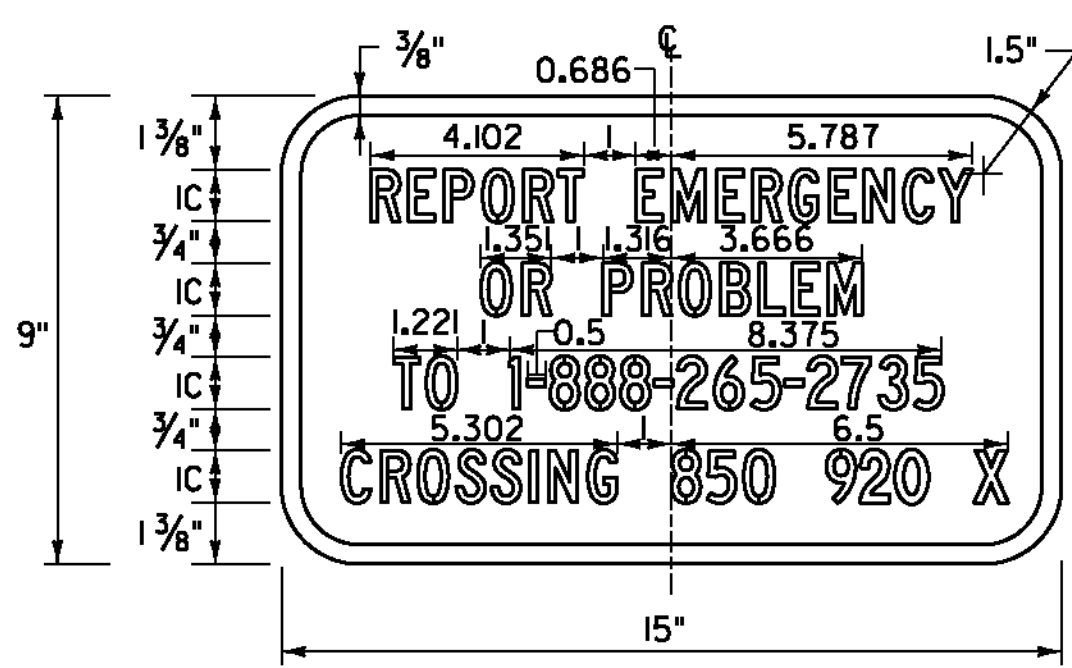


MAIN MAST LIGHTS



SIDE LIGHTS  
20° LEFT  
FOR RED VILLAGE RD

BASE OF LADDER SHALL REST ON MAST BASE OR FOUNDATION. STANDOFFS SHALL NOT BE USED TO CARRY WEIGHT OF MAN



I-13

LOCATION:  
U.S. ROUTE 5 LYNDON STA. 94+07, RT (ON SIGNAL POLE)  
U.S. ROUTE 5 LYNDON STA. 94+25, RT (ON RR CONTROL BOX)  
U.S. ROUTE 5 LYNDON STA. 95+38, LT (ON SIGNAL POLE)

COLOR: WHITE BORDER AND TEXT (RETROREFLECTIVE)  
BLUE BACKGROUND (RETROREFLECTIVE)

MATERIAL: SEE SIGN NOTES ON THIS SHEET

SIGN NOTES:

1. THE EMERGENCY CONTACT TELEPHONE NUMBER IS 1-888-265-2735, THE CROSSING NUMBER IS 850-920X ON U.S. ROUTE 5.
2. COLORS:  
THE SIGNS SHALL HAVE AN ASTM D 4956 TYPE III REFLECTORIZED WHITE TEXT AND BORDER ON AN ASTM D 4956 TYPE III REFLECTORIZED BLUE BACKGROUND. THE COLORS SHALL CONFORM WITH THE COLORS ADOPTED BY AASHTO AND APPROVED BY THE FHWA.
3. MATERIALS:  
THE SIGN BASE MATERIALS USED FOR THE GUIDE SIGNS MAY BE ANY OF THE FOLLOWING MINIMUM THICKNESSES NOTED:  
FLAT SHEET ALUMINUM 0.080"  
HIGH DENSITY OVERLAID PLYWOOD 1/2"  
THE RETROREFLECTIVE MATERIAL SHALL BE RETROREFLECTIVE SHEETING APPLIED TO THE ENTIRE BACKGROUND OF THE SIGN. THE TEXT AND BORDER MAY BE LETTERING FILM OR SILK SCREENED.

4. TEXT DESIGN:  
LETTERS, DIGITS, SYMBOLS, SPACINGS AND TEXT DIMENSIONS SHALL CONFORM TO THE LATEST VERSION OF FHWA'S "STANDARD ALPHABETS FOR HIGHWAY SIGNS AND PAVEMENT MARKINGS". DETAILS SHALL CONFORM WITH THOSE DESCRIBED IN THE PUBLICATION "STANDARD HIGHWAY SIGNS" AS SPECIFIED IN THE MUTCD.
5. DESIGN:  
THE DESIGN OF THESE SIGNS SHALL CONFORM WITH THE DETAILS SET FORTH IN THE MANUAL "STANDARD HIGHWAY SIGNS" AS SPECIFIED IN "THE MANUAL ON UNIFORM TRAFFIC CONTROL DEVICES".
6. SPECIFICATIONS:  
THE SIGNS SHALL MEET THE VERMONT STANDARD STATE SPECIFICATIONS FOR "TRAFFIC SIGNS" AS DESCRIBED IN THE VAOT STANDARD SPECIFICATIONS FOR CONSTRUCTION.

NOT TO SCALE

**RAILROAD  
CROSSING  
DETAIL  
SHEET #4**

**AARDOT #850-920X**

PROJECT NAME: ST. JOHNSBURY-LYNDON

PROJECT NUMBER: STP 2928(I)

FILE NAME: p10c262.dgn

PROJECT LEADER: JLL

DESIGNED BY: MCF

IPARM FILE: p10c262rctd04.i

PLOT DATE: 10/17/2013

DRAWN BY: STANTEC

CHECKED BY: JLL

SHEET 25 OF 133

