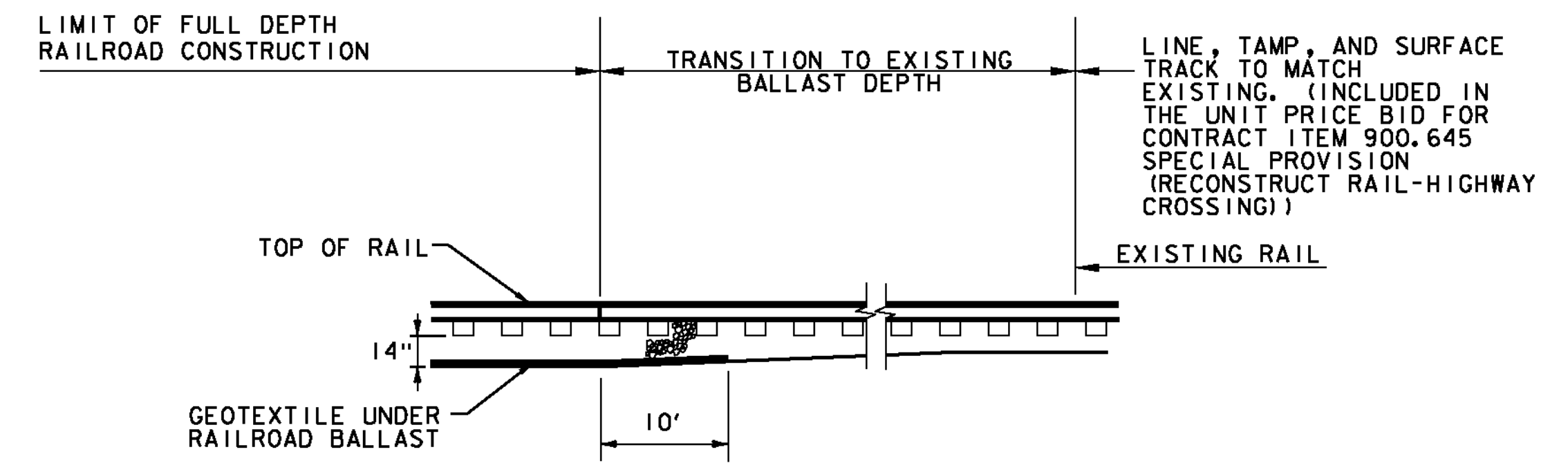
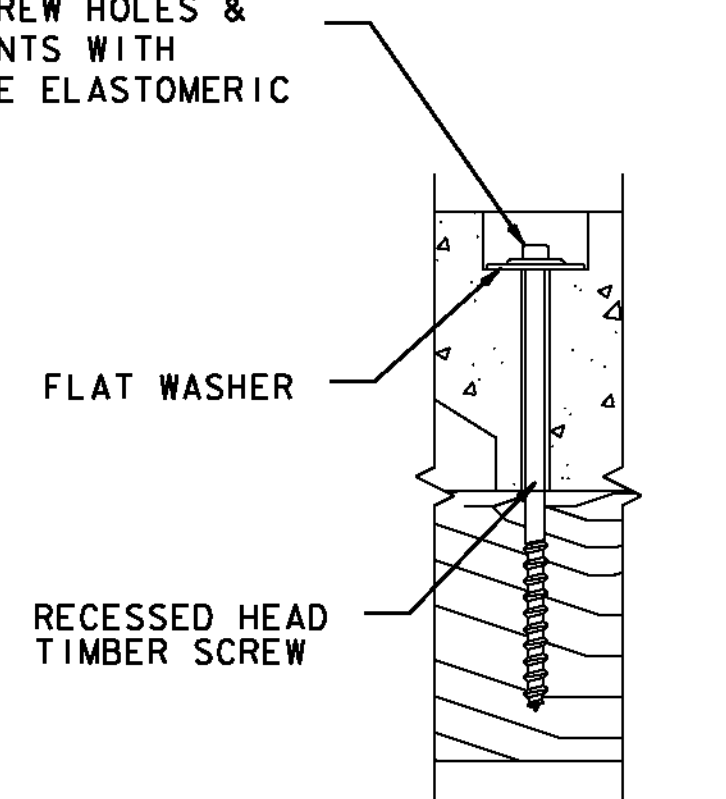


**TYPICAL PLAN VIEW OF CROSSING PANELS**

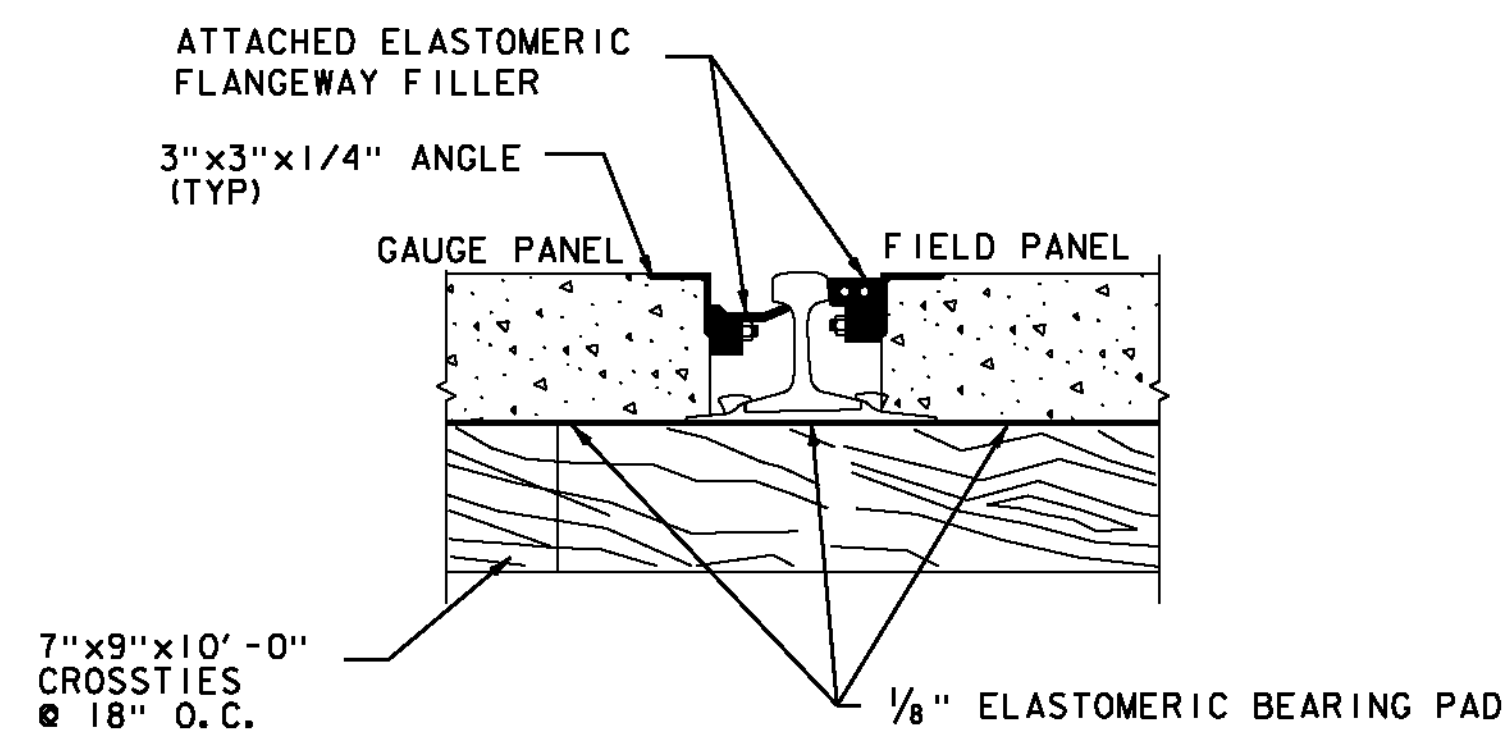


**TYPICAL BALLAST TRANSITION**

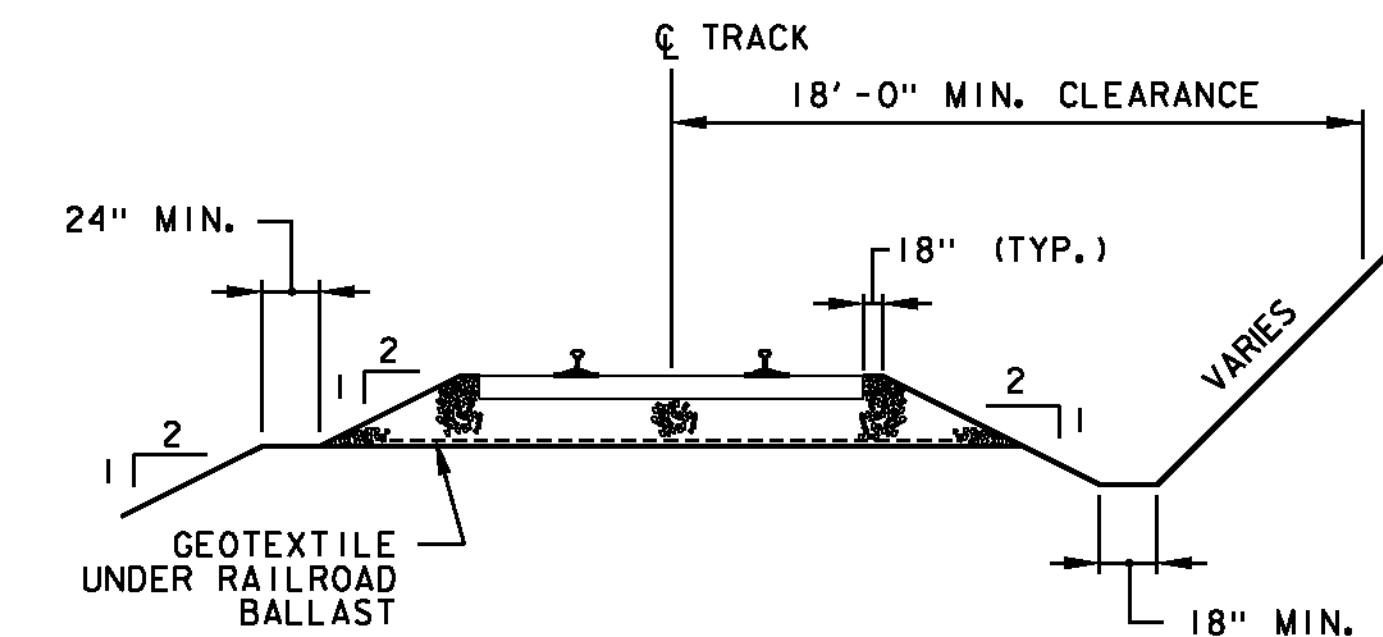
FILL LAG SCREW HOLES & LIFTING POINTS WITH POLYURETHANE ELASTOMERIC SEALANT



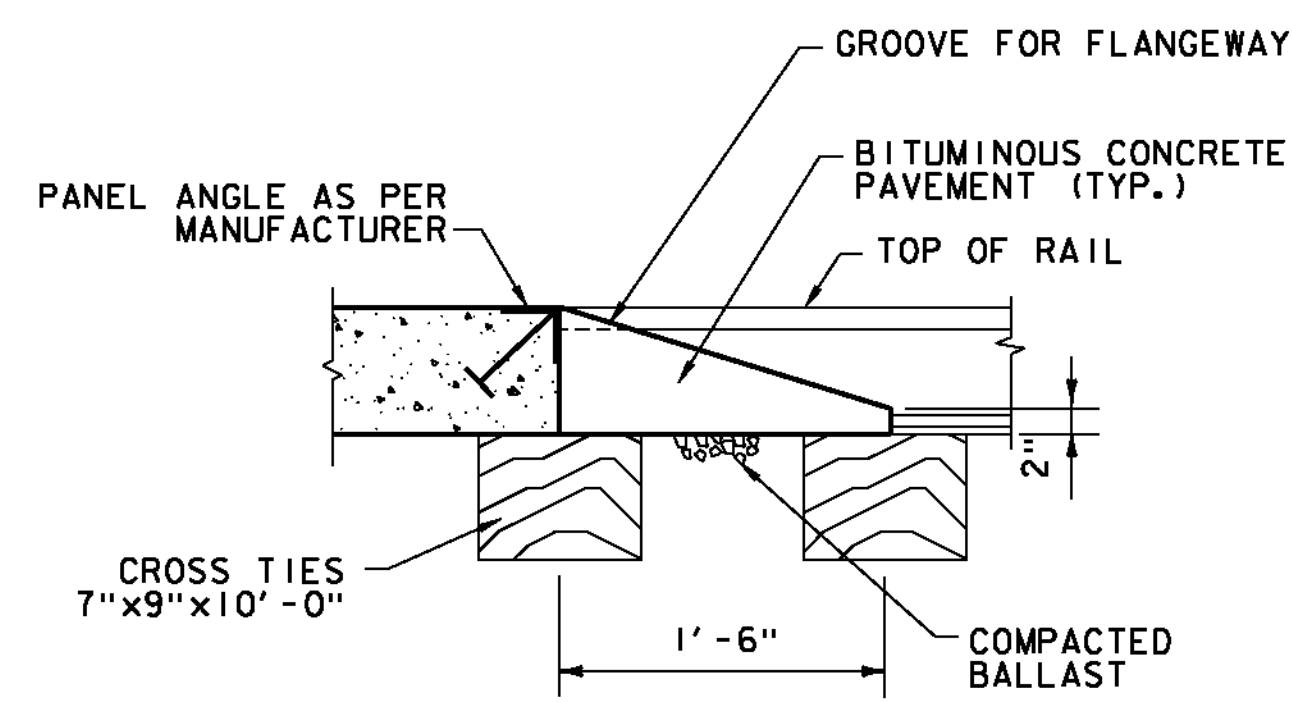
**SCREW DETAIL**



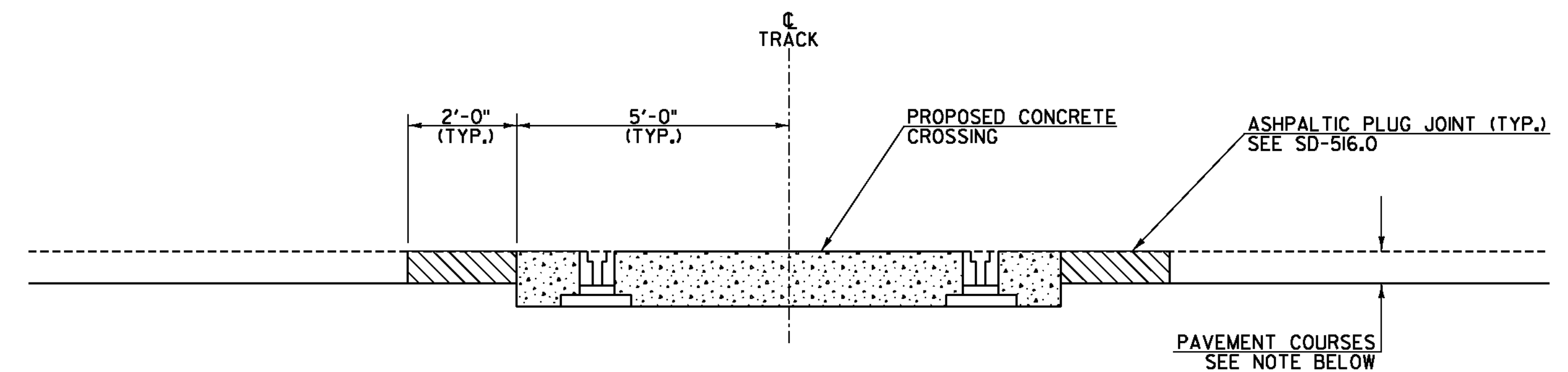
**RAIL-SEALS TYPICAL**



**TYPICAL SECTION RAILROAD**



**PANEL END SIDE VIEW**



**TRANSITION AREA FOR RAIL CROSSING**

U.S. ROUTE 5  
LYNDON STA. 94+80

NOTE: SEE THE TYPICAL TRANSVERSE SECTION ON SHEET 23 FOR EXCAVATION, BALLAST AND PAVEMENT DEPTHS AND TRANSITIONS.

NOT TO SCALE

**AARDOT #850-920X**

**RAILROAD  
CROSSING  
DETAIL  
SHEET #3**

PROJECT NAME: ST. JOHNSBURY-LYNDON

PROJECT NUMBER: STP 2928(I)

FILE NAME: p10c262.dgn

PROJECT LEADER: JLL

DESIGNED BY: MCF

IPARM FILE: p10c262rdd03.i

PLOT DATE: 10/17/2013

DRAWN BY: STANTEC

CHECKED BY: JLL

SHEET 24 OF 133

