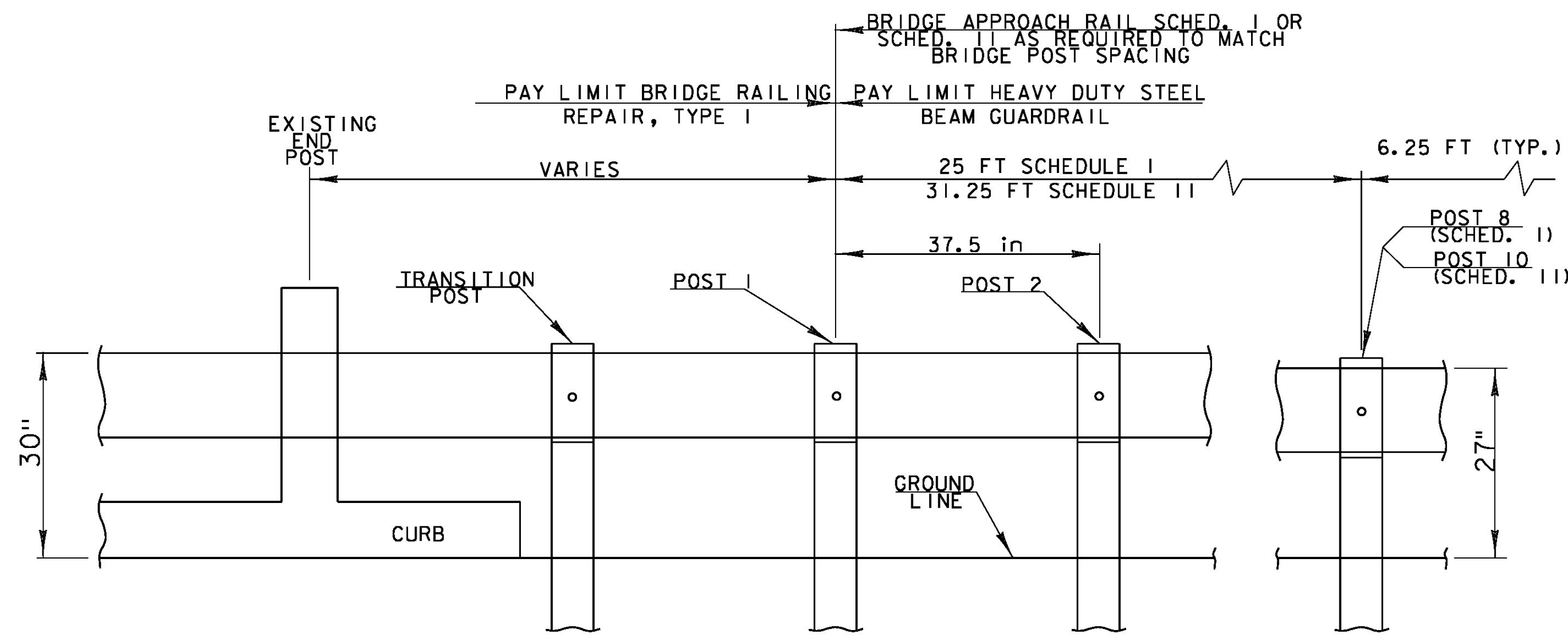


BRIDGE APPROACH RAILING

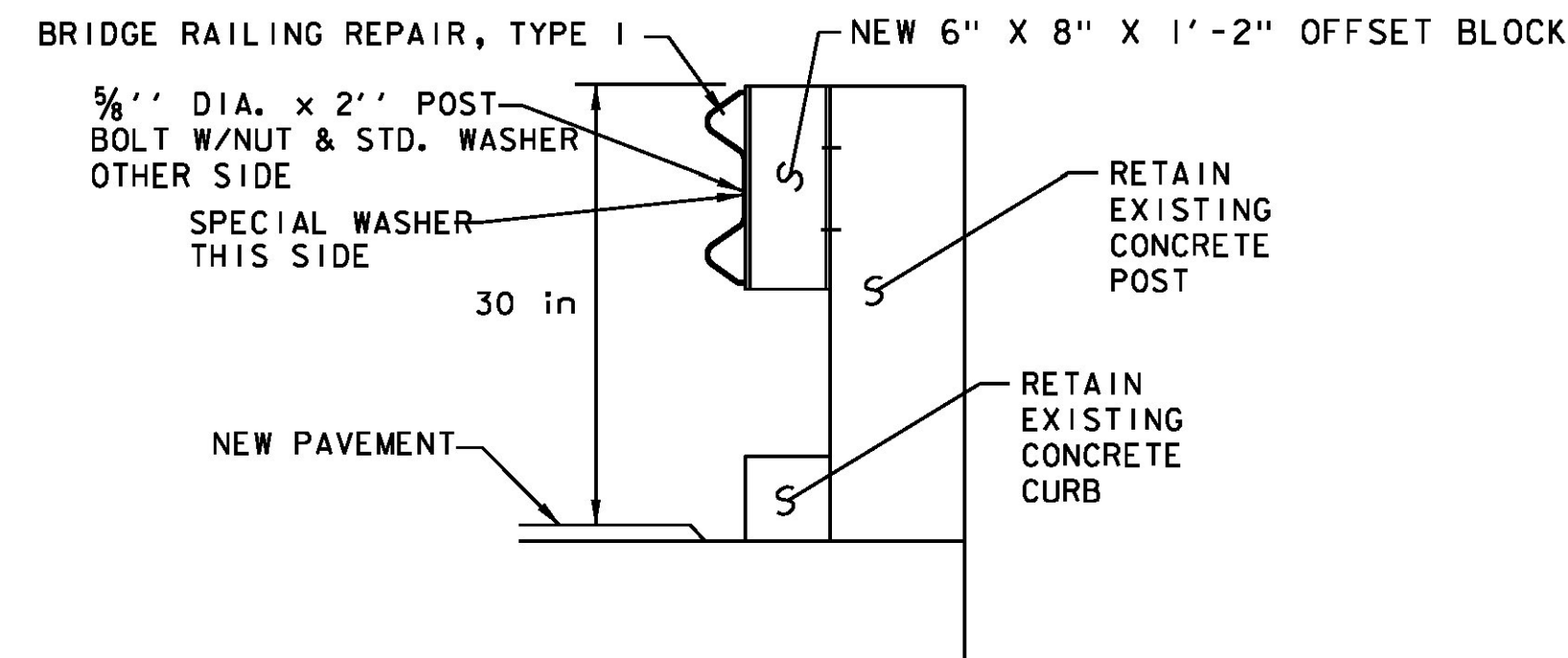
WHEN A RAIL PANEL SPLICE OCCURS AT POST NO. 1 USE SCHEDULE I FOR APPROACH RAILING. WHEN A RAIL PANEL SPLICE OCCURS AT BRIDGE END POST USE SCHEDULE II FOR APPROACH RAILING.

SCHEDULE I		
POST NO.	SPACING	PAYMENT FACTOR
1	3'-1 1/2''	1.4 x 12.5 ft
2	3'-1 1/2''	
3	3'-1 1/2''	
4	3'-1 1/2''	
5	4'-2''	1.2 x 12.5 ft
6	4'-2''	
7	4'-2''	
8	4'-2''	1.0 (TYP.)
9	6'-3'' (TYP.)	

SCHEDULE II		
POST NO.	SPACING	PAYMENT FACTOR
1	3'-1 1/2''	1.4 x 18.75 ft
2	3'-1 1/2''	
3	3'-1 1/2''	
4	3'-1 1/2''	
5	3'-1 1/2''	
6	4'-2''	1.2 x 12.5 ft
7	4'-2''	
8	4'-2''	
9	4'-2''	1.0 (TYP.)
10	6'-3'' (TYP.)	
11	6'-3'' (TYP.)	



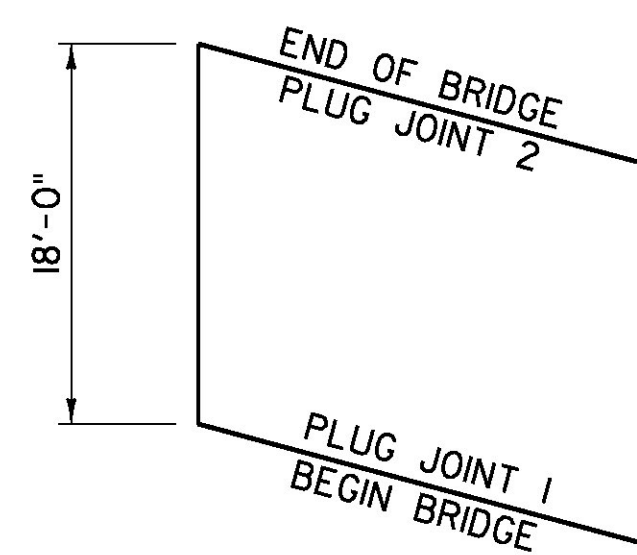
BRIDGE APPROACH RAILING



POST DETAIL

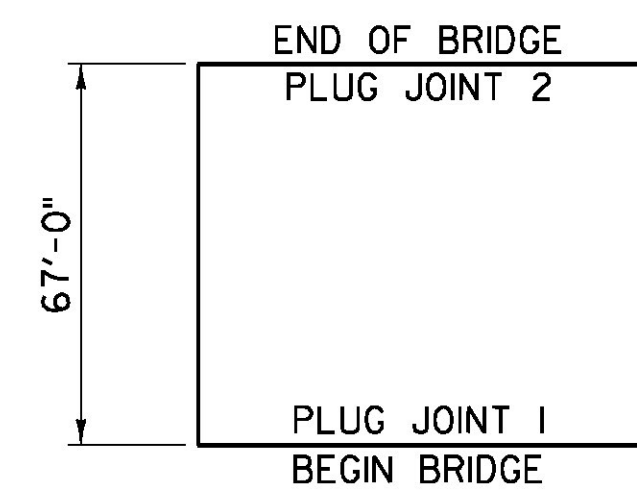
NOTES:

- BRIDGE RAIL SHALL BE HEAVY DUTY STEEL BEAM RAIL, ITEM 525.50 "BRIDGE RAILING REPAIR, TYPE I".
- BRIDGE APPROACH RAIL HEIGHT SHALL BE TRANSITIONED TO NORMAL ROADWAY RAIL HEIGHT IN 25 FEET.
- APPROACH RAILING SHALL BE HEAVY DUTY STEEL BEAM FOR LENGTHS OF 25 FEET OR 31.25 FEET DETERMINED BY THE SCHEDULE. SEE BRIDGE DETAILS.
- FOR BRIDGE RAILING, THE TRANSITION POST SHALL HAVE AN OFFSET BLOCK AND BE LOCATED AS CLOSE AS PRACTICAL TO THE MID-POINT BETWEEN THE BRIDGE END POST AND APPROACH RAIL POST 1.
- SPLICES SHALL LAP IN DIRECTION OF TRAFFIC FLOW.



JOINT	STATION	LENGTH
1	257+65	36' - 0"
2	257+83	36' - 0"
BRIDGE #22		72' - 0"
TOTAL LENGTH OF JOINT		

HANCOCK BRIDGE #22
STA. 257+74 (MM 4.88)
COLD PLANE AND PAVE

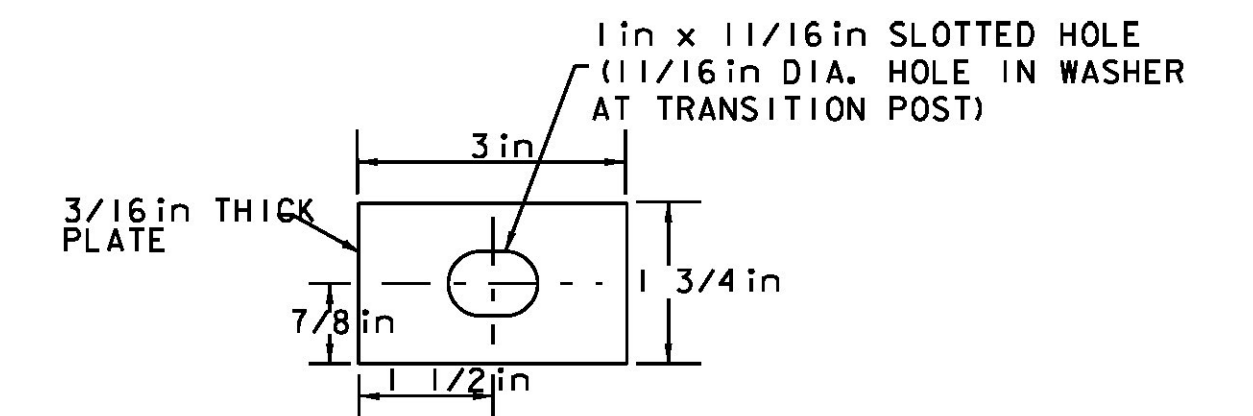


JOINT	STATION	LENGTH
1	268+00	30' - 0"
2	268+67	30' - 0"
BRIDGE #23		60' - 0"
TOTAL LENGTH OF JOINT		

HANCOCK BRIDGE #23
STA. 268+34 (MM 5.08)
COLD PLANE AND PAVE

BRIDGE #	516.10 BRIDGE EXPANSION JOINT, ASPHALTIC PLUG	580.20 RAPID SETTING CONCRETE REPAIR MATERIAL WITH COARSE AGGREGATE
	LF	CF
HANCOCK #22	72	
HANCOCK #23	60	10
SUBTOTAL	132	10
ROUNDING	3	-
TOTAL	135	10

NOTE: REFER TO BRIDGE JOINT ASPHALTIC PLUG - STRUCTURES DETAIL SD-516.10



SPECIAL WASHER DETAIL

(MATERIAL SHALL MEET AASHTO M270M/M270 GRADE 50)

NOT TO SCALE

PROJECT NAME: HANCOCK	PLOT DATE: 3/18/2015
PROJECT NUMBER: STP 2923 (1)	DRAWN BY: J. GOODALL
FILE NAME: z10c252det.dgn	CHECKED BY: C. LATHROP
DESIGNED BY: J. GOODALL	BRIDGE DETAIL SHEET
	SHEET 124 OF 207