

STONE FILL, TYPE I
 STA. 303+50 - STA. 305+54 LT
 STA. 305+74 - STA. 305+80 LT

STONE FILL, TYPE II
 STA. 305+54 - STA. 305+74 LT

DURABLE 4 INCH WHITE LINE (SEE OPTION ITEMS)
 STA. 302+25 - STA. 307+50 (SOLID LT & RT)

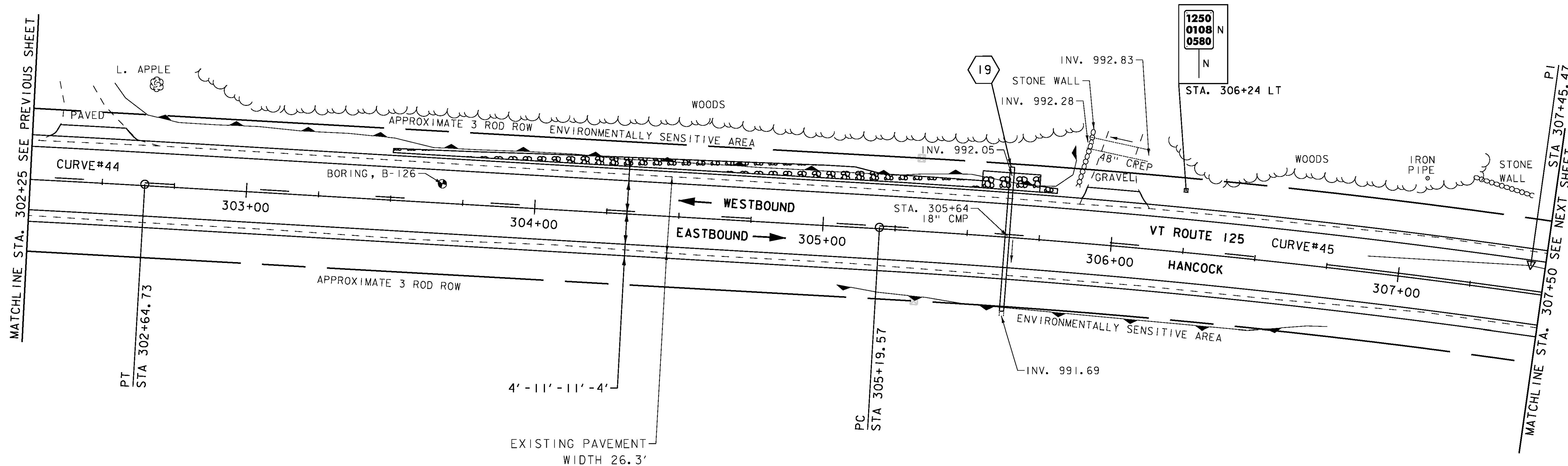
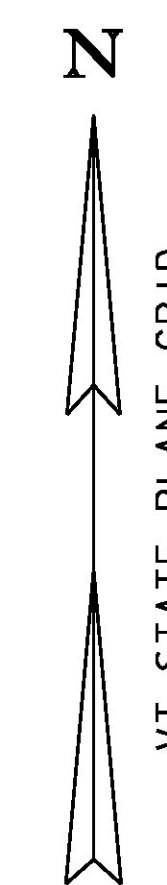
DURABLE 4 INCH YELLOW LINE (SEE OPTION ITEMS)
 STA. 302+25 - STA. 306+75 (DASHED LT, SOLID RT)
 STA. 306+75 - STA. 307+50 (SOLID LT & RT)

TEMPORARY 4 INCH WHITE LINE, PAINT
 STA. 302+25 - STA. 307+50 (SOLID LT & RT)

TEMPORARY 4 INCH YELLOW LINE, PAINT
 STA. 302+25 - STA. 306+75 (DASHED LT, SOLID RT)
 STA. 306+75 - STA. 307+50 (SOLID LT & RT)

GEOTEXTILE FOR SILT FENCE
 STA. 305+54 - STA. 305+74 RT
 STA. 305+54 - STA. 305+74 LT

GRUBBING MATERIAL (6")
 STA. 305+54 - STA. 305+74 RT
 STA. 305+54 - STA. 305+74 LT



19 STA. 305+63.88 RT 26.13' TO
 STA. 305+63.91 LT 23.87'
 ASKEW ANGLE = 89.8494° RT
 REMOVE EXISTING PIPE
 INSTALL 18" CPEP (50'-0")
 INV. IN = 992.05'
 INV. OUT = 991.74'

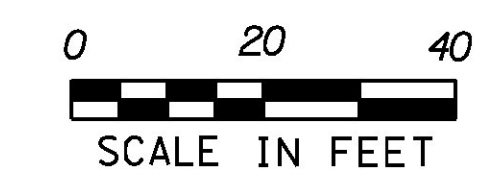
SIGN LEGEND

R = REMOVE
 R&S = REMOVE AND SALVAGE
 RET = RETAIN
 S = SALVAGED
 N = NEW
 B-B = BACK TO BACK
 - - = EXISTING
 — = NEW

ENVIRONMENTALLY SENSITIVE LOCATIONS:

NO.	LIMITS	POS.	TYPE
7.	STA. 302+52 - STA. 305+86	LT	-
8.	STA. 305+06 - STA. 306+78	RT	-

CURVE #45
 DELTA = 9° 13' 30"
 D = 2° 02' 47"
 R = 2800.00'
 T = 225.90'
 L = 450.82'
 E = 9.10'
 BANKING 0.039 FT/FT
 DESIGN SPEED 50 MPH
 SEE BANKING DIAGRAMS
 FOR MORE INFORMATION



PROJECT NAME: HANCOCK	PLOT DATE: 3/18/2015
PROJECT NUMBER: STP 2923 (1)	DRAWN BY: J. GOODALL
FILE NAME: z10c252bdr.dgn	CHECKED BY: C. LATHROP
DESIGNED BY: B. MARTIN	SHEET 83 OF 207
PROJECT LAYOUT SHEET 51	