

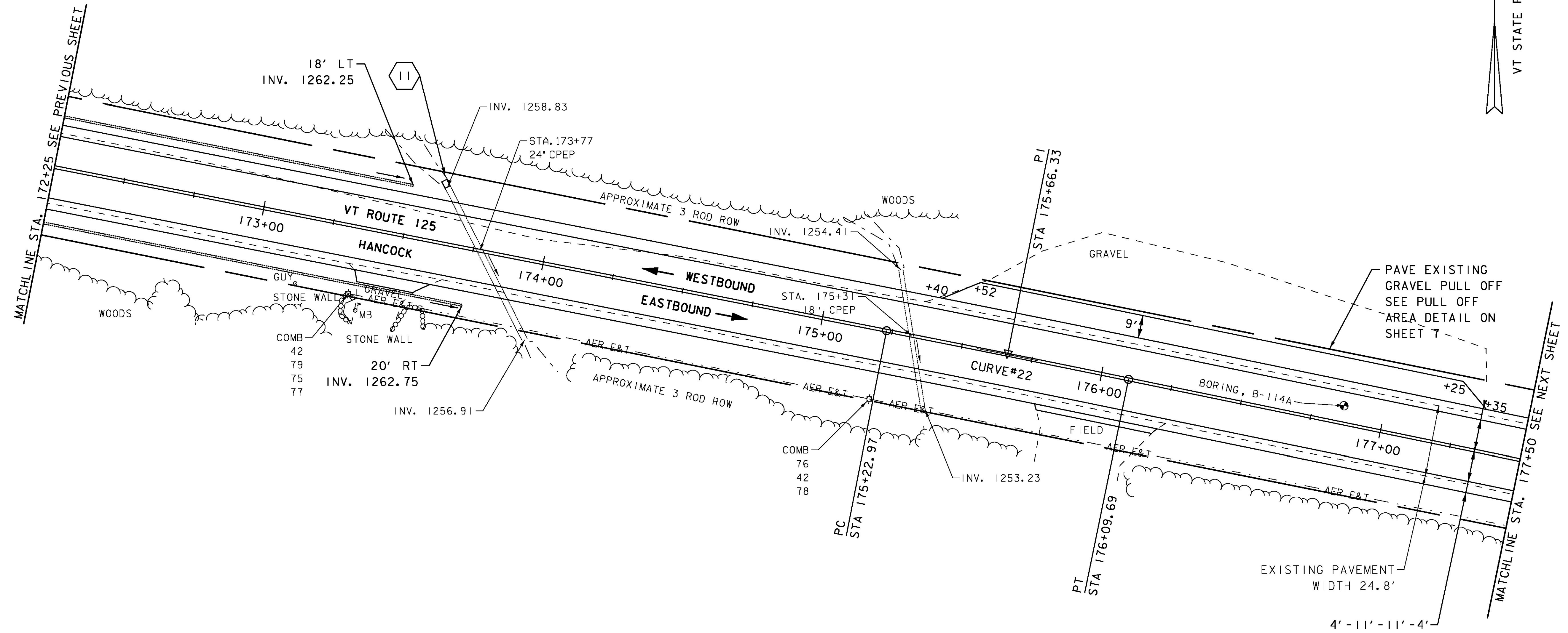
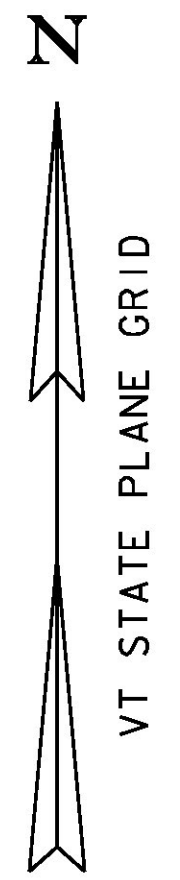
6 INCH UNDERDRAIN PIPE  
 STA. 172+25 - STA. 173+75 RT  
 STA. 172.25 - STA. 173+50 LT

DURABLE 4 INCH WHITE LINE (SEE OPTION ITEMS)  
 STA. 172+25 - STA. 177+50 (SOLID LT & RT)

DURABLE 4 INCH YELLOW LINE (SEE OPTION ITEMS)  
 STA. 172+25 - STA. 177+50 (SOLID LT & RT)

TEMPORARY 4 INCH WHITE LINE, PAINT  
 STA. 172+25 - STA. 177+50 (SOLID LT & RT)

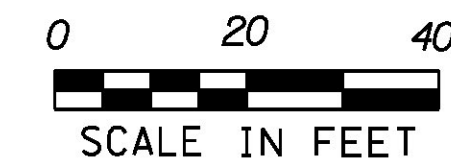
TEMPORARY 4 INCH YELLOW LINE, PAINT  
 STA. 172+25 - STA. 177+50 (SOLID LT & RT)



**SIGN LEGEND**  
 R = REMOVE  
 R&S = REMOVE AND SALVAGE  
 RET = RETAIN  
 S = SALVAGED  
 N = NEW  
 B-B = BACK TO BACK  
 - - = EXISTING  
 — = NEW

11 STA. 173+59.44 LT 22.96' TO  
 STA. 173+98.82 RT 27.65'  
 EXTEND 24" CPEP 2'-6" LT  
 INV. IN = 1258.95'  
 INV. OUT = 1256.91'

CURVE #22  
 DELTA = 0°29'49"  
 D = 0°34'23"  
 R = 10000.00'  
 T = 43.36'  
 L = 86.72'  
 E = 0.09'  
 BANKING NORMAL CROWN  
 DESIGN SPEED 50 MPH  
 SEE BANKING DIAGRAMS  
 FOR MORE INFORMATION



PROJECT NAME: HANCOCK	PLOT DATE: 3/18/2015
PROJECT NUMBER: STP 2923 (1)	DRAWN BY: J. GOODALL
FILE NAME: z10c252bdr.dgn	CHECKED BY: C. LATHROP
DESIGNED BY: B. MARTIN	SHEET 58 OF 207
PROJECT LAYOUT SHEET 26	