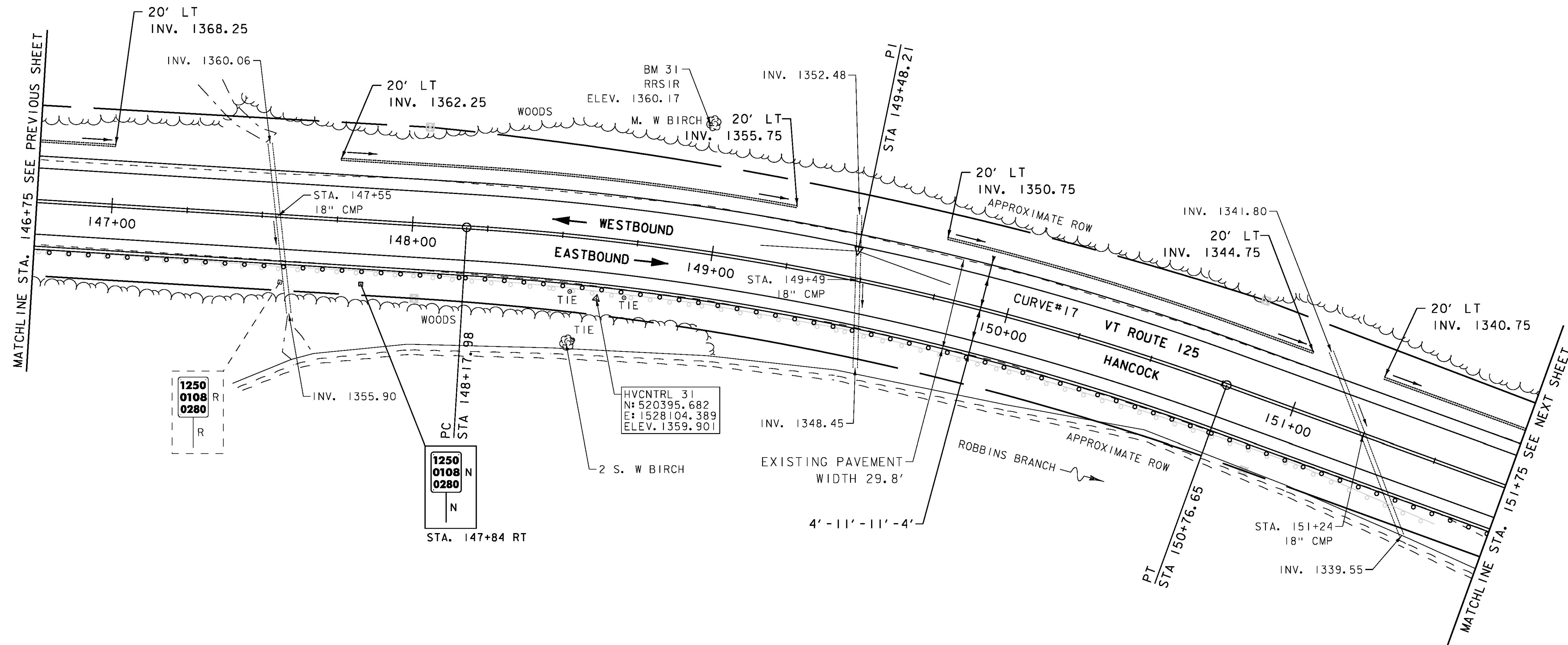
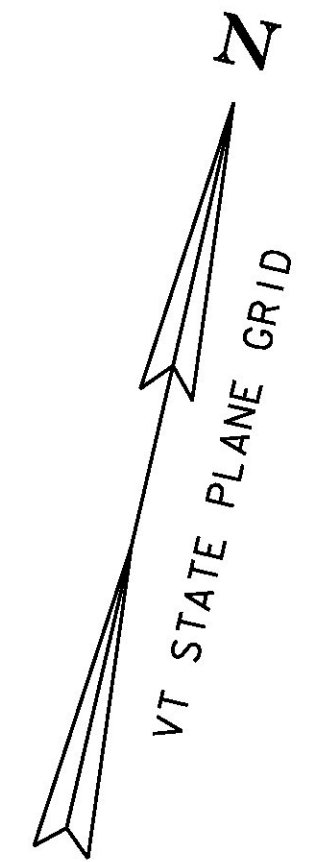


6 INCH UNDERDRAIN PIPE
 STA. 146+75 - STA. 147+00 LT
 STA. 147+75 - STA. 149+25 LT
 STA. 149+75 - STA. 151+00 LT
 STA. 151+25 - STA. 151+75 LT
 REMOVAL AND DISPOSAL OF GUARDRAIL
 STA. 146+75 - STA. 151+57 RT

DURABLE 4 INCH WHITE LINE (SEE OPTION ITEMS)
 STA. 146+75 - STA. 151+75 (SOLID LT & RT)
 DURABLE 4 INCH YELLOW LINE (SEE OPTION ITEMS)
 STA. 146+75 - STA. 151+75 (SOLID LT & RT)
 TEMPORARY 4 INCH WHITE LINE, PAINT
 STA. 146+75 - STA. 151+75 (SOLID LT & RT)
 TEMPORARY 4 INCH YELLOW LINE, PAINT
 STA. 146+75 - STA. 151+75 (SOLID LT & RT)

REMOVING SIGNS
 AS SHOWN - I
 SPECIAL PROVISION (BOX BEAM
 GUARDRAIL W/7 FEET POSTS)
 STA. 146+75 - STA. 151+75 RT



1250
0108
0280
R
R

HVCNTRL 31
N: 520395.682
E: 1528104.389
ELEV. 1359.901

1250
0108
0280
N
N

SIGN LEGEND
 R = REMOVE
 R&S = REMOVE AND SALVAGE
 RET = RETAIN
 S = SALVAGED
 N = NEW
 B-B = BACK TO BACK
 - - = EXISTING
 — = NEW

CURVE #17
 DELTA = 16°28'04"
 D = 6°21'58"
 R = 900.00'
 T = 130.24'
 L = 258.67'
 E = 9.37'
 BANKING 0.078 FT/FT
 DESIGN SPEED 50 MPH
 SEE BANKING DIAGRAMS
 FOR MORE INFORMATION



PROJECT NAME: HANCOCK	PLOT DATE: 3/18/2015
PROJECT NUMBER: STP 2923 (1)	DRAWN BY: J. GOODALL
FILE NAME: z10c252bdr.dgn	CHECKED BY: C. LATHROP
DESIGNED BY: B. MARTIN	SHEET 53 OF 207
PROJECT LAYOUT SHEET 21	