

CURVE #6
 DELTA = 43°25'50"
 D = 15°16'44"
 R = 375.00'
 T = 149.35'
 L = 284.25'
 E = 28.65'
 BANKING 0.080 FT/FT
 DESIGN SPEED 35 MPH
 SEE BANKING DIAGRAMS
 FOR MORE INFORMATION

6 INCH UNDERDRAIN PIPE
 STA. 67+25 - STA. 67+50 LT
 STA. 68+50 - STA. 70+25 LT
 STA. 68+50 - STA. 70+50 RT
 STA. 71+00 - STA. 72+75 LT
 STA. 71+00 - STA. 72+75 RT

GEOTEXTILE FOR SILT FENCE
 STA. 67+30 - STA. 67+40 LT

GRUBBING MATERIAL (6")
 STA. 67+30 - STA. 67+40 LT

REMOVING SIGNS
 AS SHOWN - I

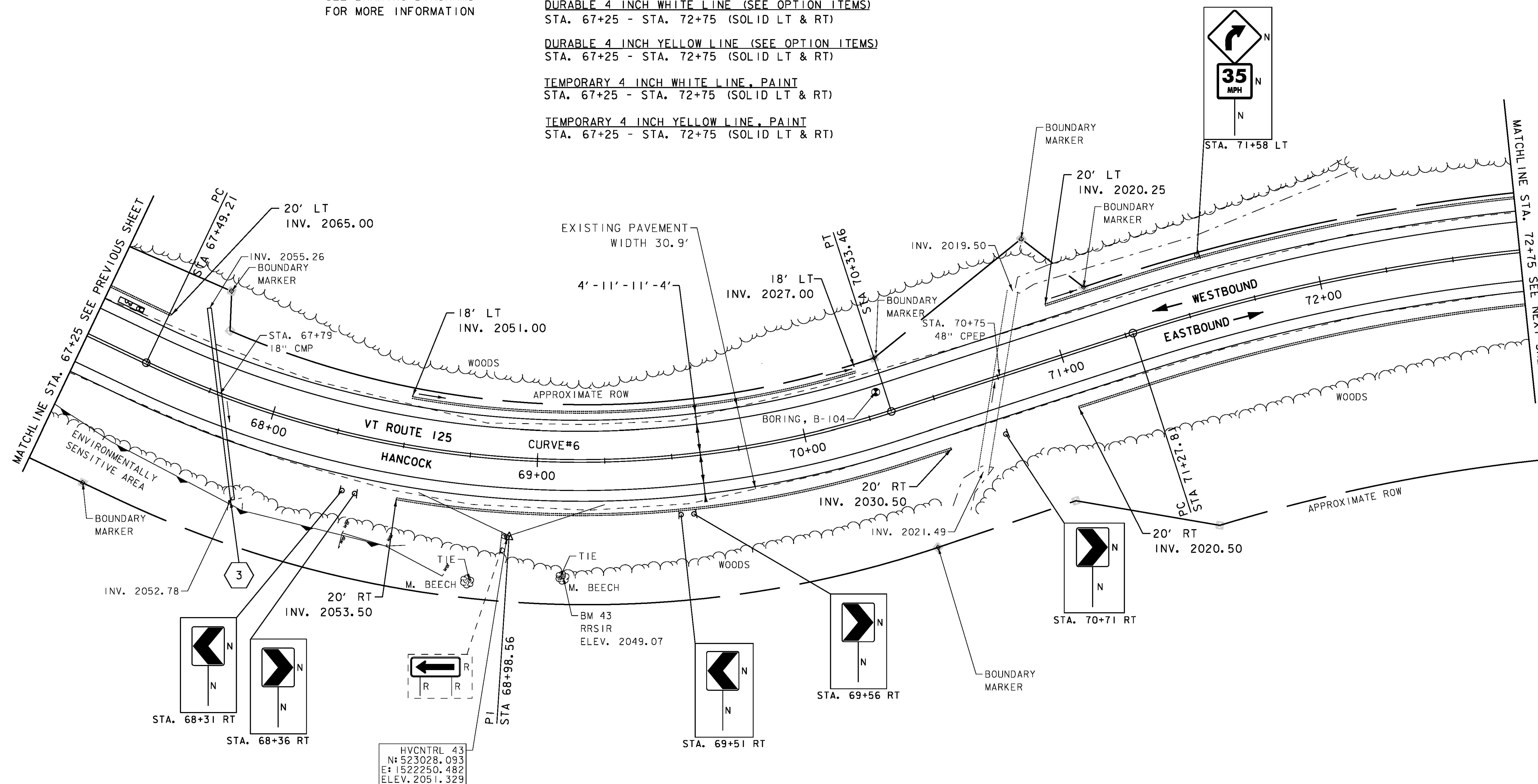
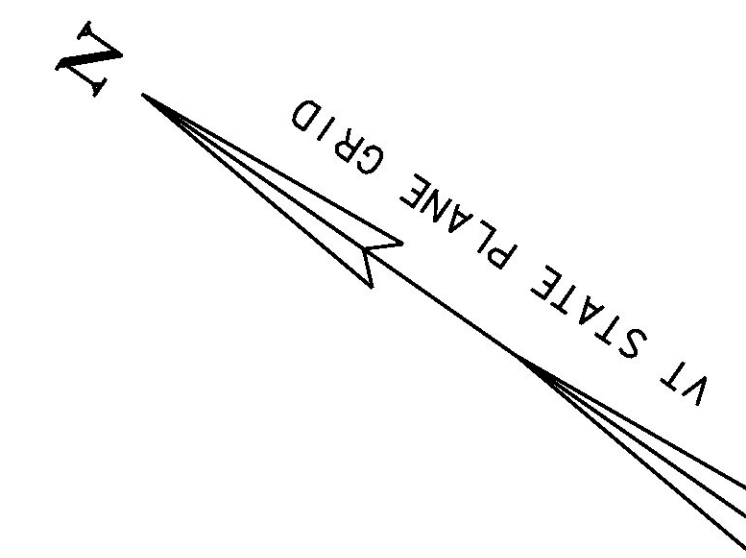
STONE FILL, TYPE I
 STA. 67+30 - STA. 67+40 LT

DURABLE 4 INCH WHITE LINE (SEE OPTION ITEMS)
 STA. 67+25 - STA. 72+75 (SOLID LT & RT)

DURABLE 4 INCH YELLOW LINE (SEE OPTION ITEMS)
 STA. 67+25 - STA. 72+75 (SOLID LT & RT)

TEMPORARY 4 INCH WHITE LINE, PAINT
 STA. 67+25 - STA. 72+75 (SOLID LT & RT)

TEMPORARY 4 INCH YELLOW LINE, PAINT
 STA. 67+25 - STA. 72+75 (SOLID LT & RT)



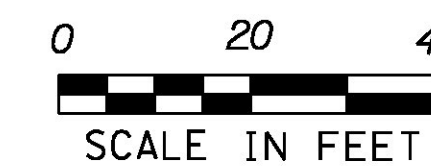
SIGN LEGEND

- R = REMOVE
- R&S = REMOVE AND SALVAGE
- RET = RETAIN
- S = SALVAGED
- N = NEW
- B-B = BACK TO BACK
- - = EXISTING
- = NEW

- 3 STA. 67+62.66 LT 28.18' TO STA. 67+95.74 RT 35.33'
- ASKEW ANGLE = 62.8575° RT
- REMOVE EXISTING PIPE
- INSTALL 18" CPEP (72' - 0")
- INV. IN = 2056.05'
- INV. OUT = 2052.60'

ENVIRONMENTALLY SENSITIVE LOCATIONS:

NO.	LIMITS	POS.	TYPE
1.	STA. 67+25 - STA. 68+57	RT	-



PROJECT NAME: HANCOCK
 PROJECT NUMBER: STP 2923 (1)

FILE NAME: z10c252bdr.dgn
 PROJECT LEADER: C. LATHROP
 DESIGNED BY: B. MARTIN
 PROJECT LAYOUT SHEET 6

PLOT DATE: 3/18/2015
 DRAWN BY: J. GOODALL
 CHECKED BY: C. LATHROP
 SHEET 38 OF 207