

6 INCH UNDERDRAIN PIPE
 STA. 61+75 - STA. 62+25 LT
 STA. 62+50 - STA. 67+25 LT
 STA. 61+75 - STA. 62+50 RT

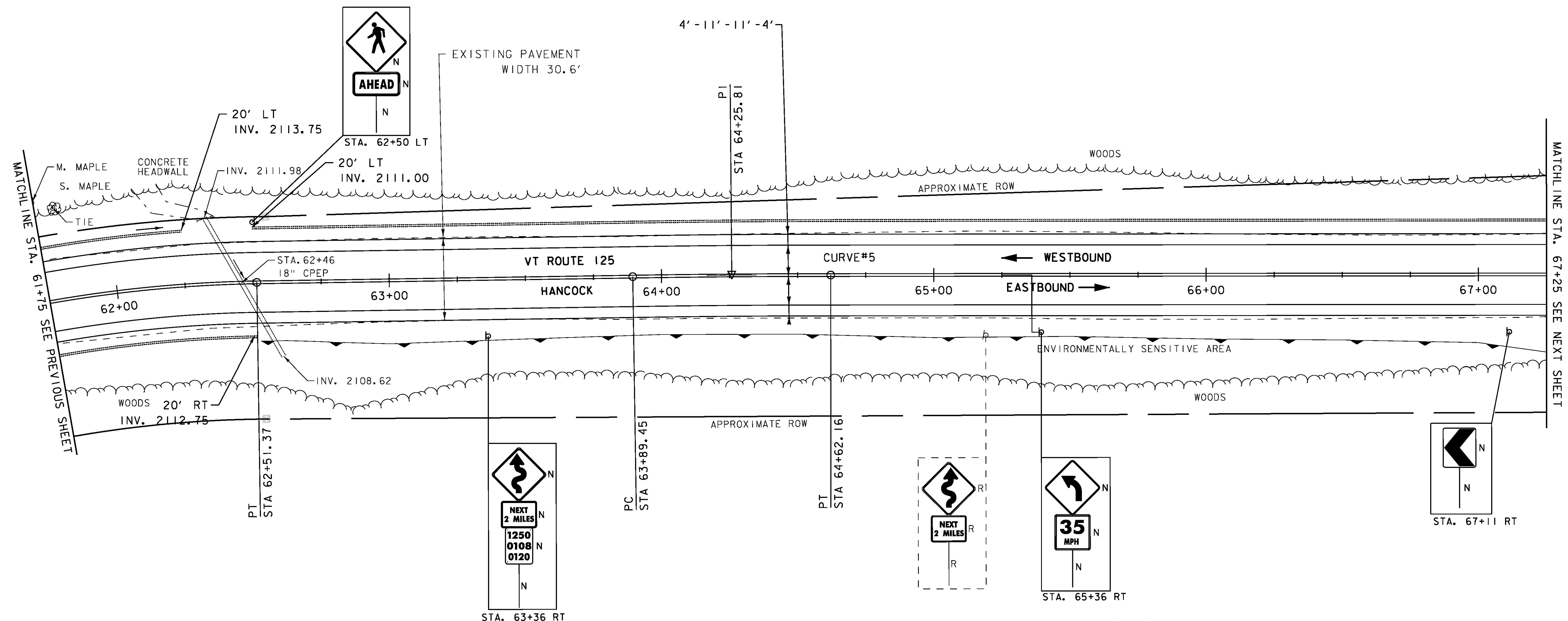
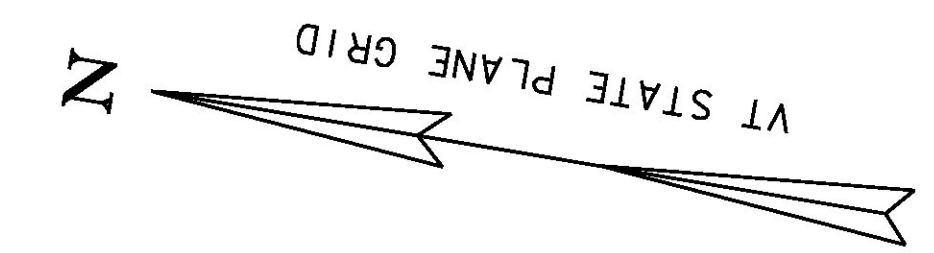
DURABLE 4 INCH WHITE LINE (SEE OPTION ITEMS)
 STA. 61+75 - STA. 67+25 (SOLID LT & RT)

DURABLE 4 INCH YELLOW LINE (SEE OPTION ITEMS)
 STA. 61+75 - STA. 67+25 (SOLID LT & RT)

TEMPORARY 4 INCH WHITE LINE, PAINT
 STA. 61+75 - STA. 67+25 (SOLID LT & RT)

TEMPORARY 4 INCH YELLOW LINE, PAINT
 STA. 61+75 - STA. 67+25 (SOLID LT & RT)

REMOVING SIGNS
 AS SHOWN -2



CURVE #5
 DELTA = 0°49'59"
 D = 1°08'45"
 R = 5000.00'
 T = 36.36'
 L = 72.71'
 E = 0.13'
 BANKING 0.024 FT/FT
 DESIGN SPEED 50 MPH
 SEE BANKING DIAGRAMS
 FOR MORE INFORMATION

SIGN LEGEND
 R = REMOVE
 R&S = REMOVE AND SALVAGE
 RET = RETAIN
 S = SALVAGED
 N = NEW
 B-B = BACK TO BACK
 - - = EXISTING
 — = NEW

ENVIRONMENTALLY SENSITIVE LOCATIONS:

NO.	LIMITS	POS.	TYPE
1.	STA. 62+52 - STA. 67+25	RT	-



PROJECT NAME: HANCOCK	PLOT DATE: 3/18/2015
PROJECT NUMBER: STP 2923 (1)	DRAWN BY: J. GOODALL
FILE NAME: z10c252bdr.dgn	CHECKED BY: C. LATHROP
DESIGNED BY: B. MARTIN	PROJECT LAYOUT SHEET 5
	SHEET 37 OF 207