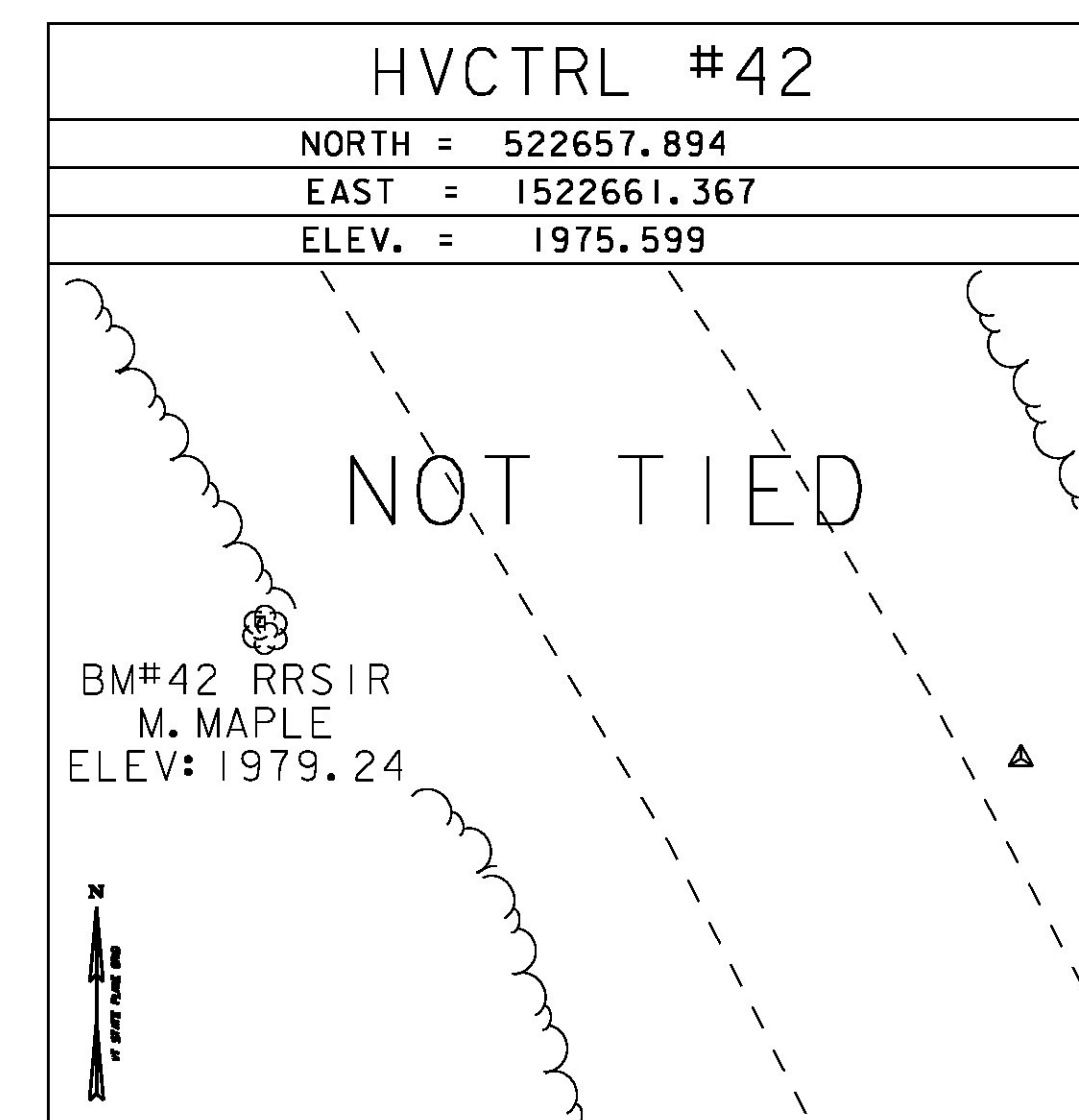
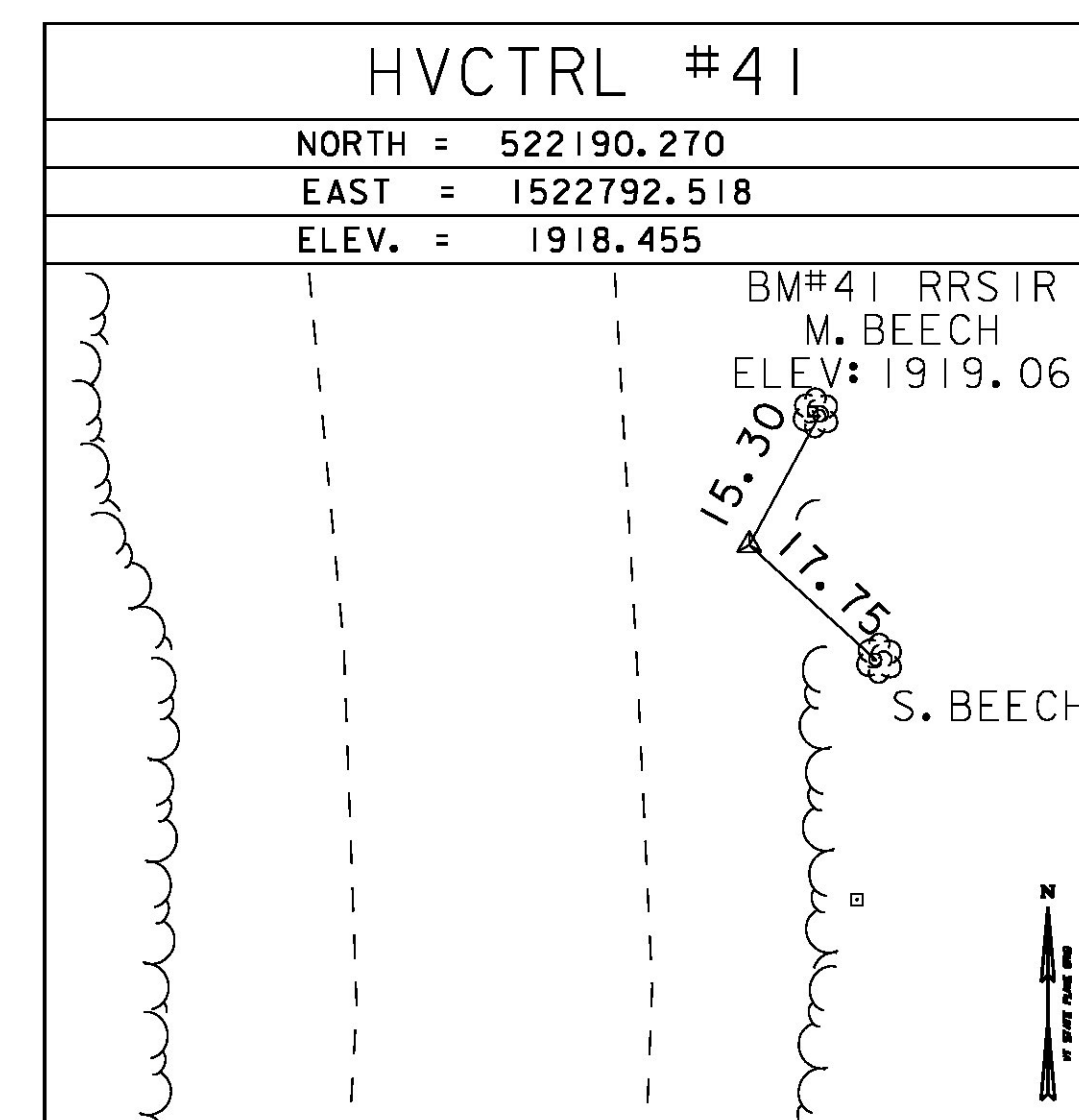
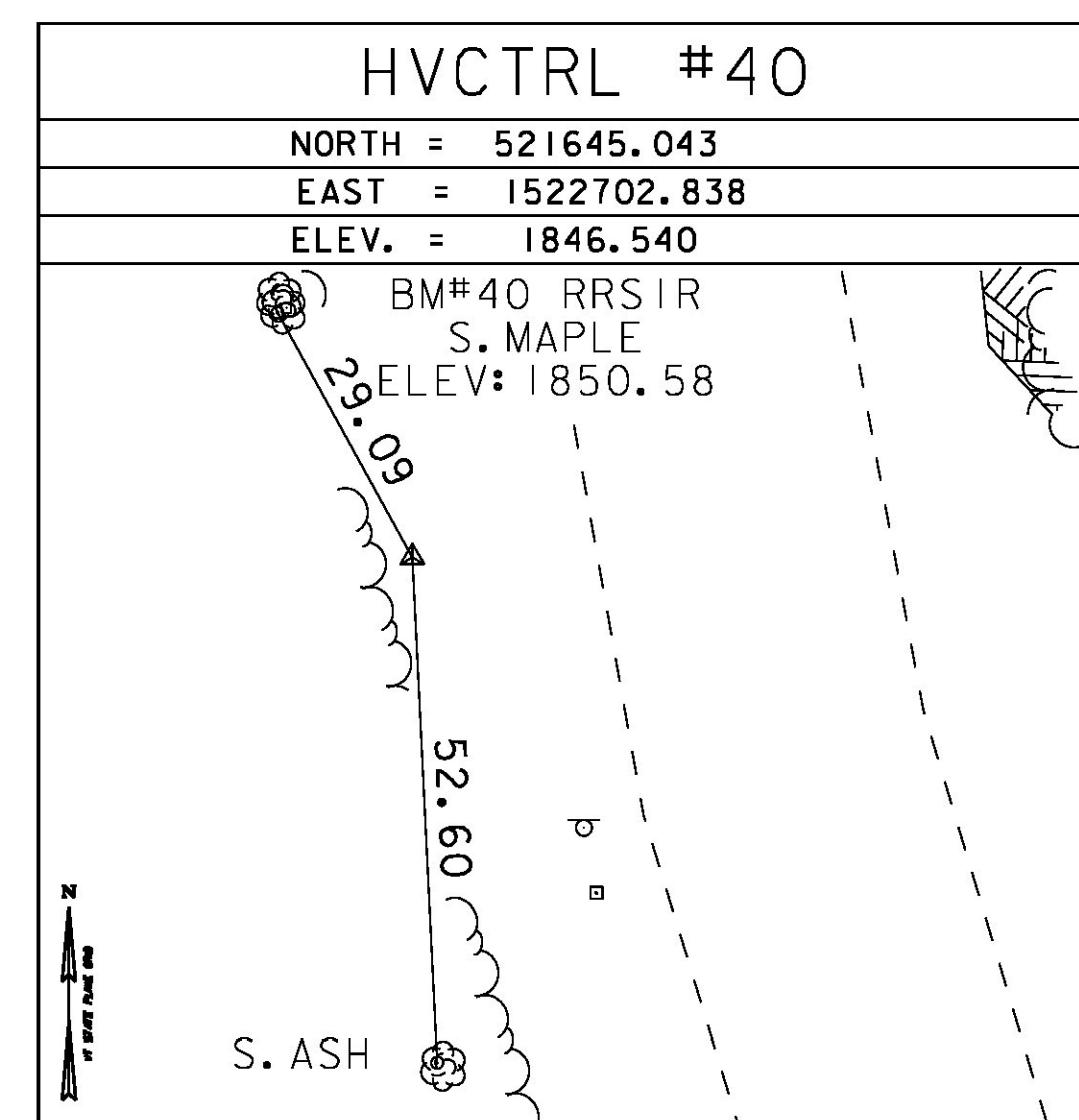
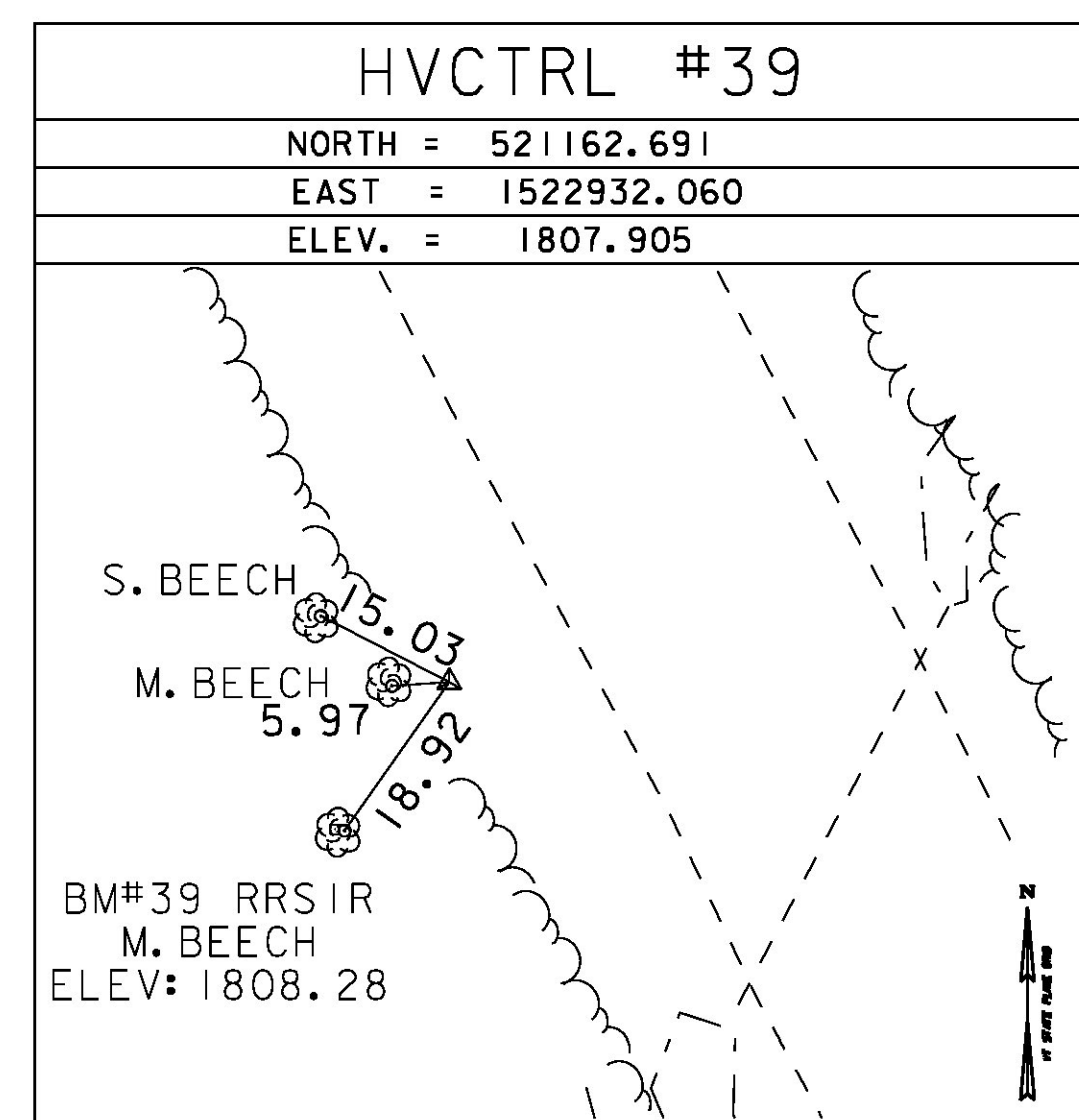
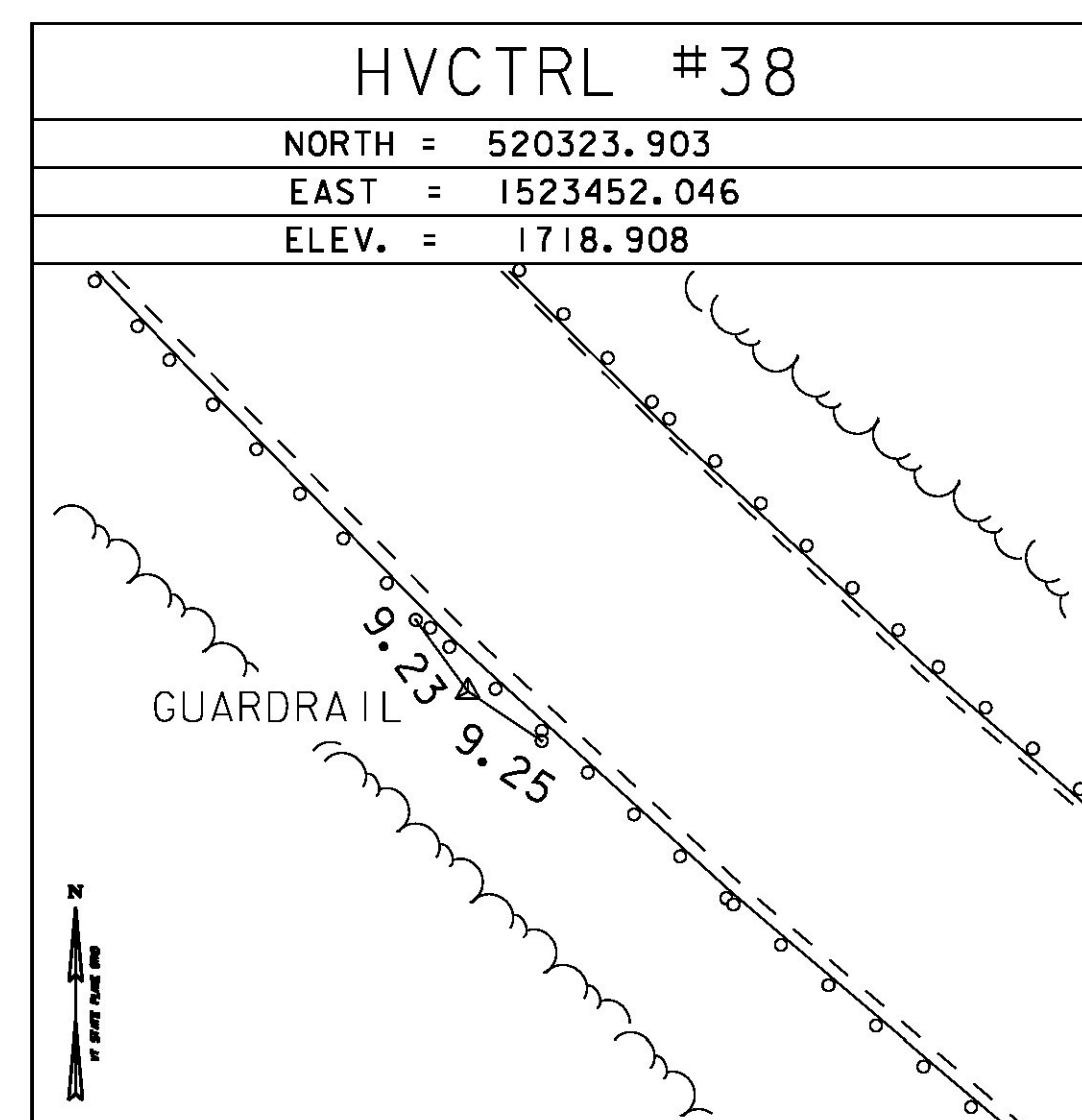
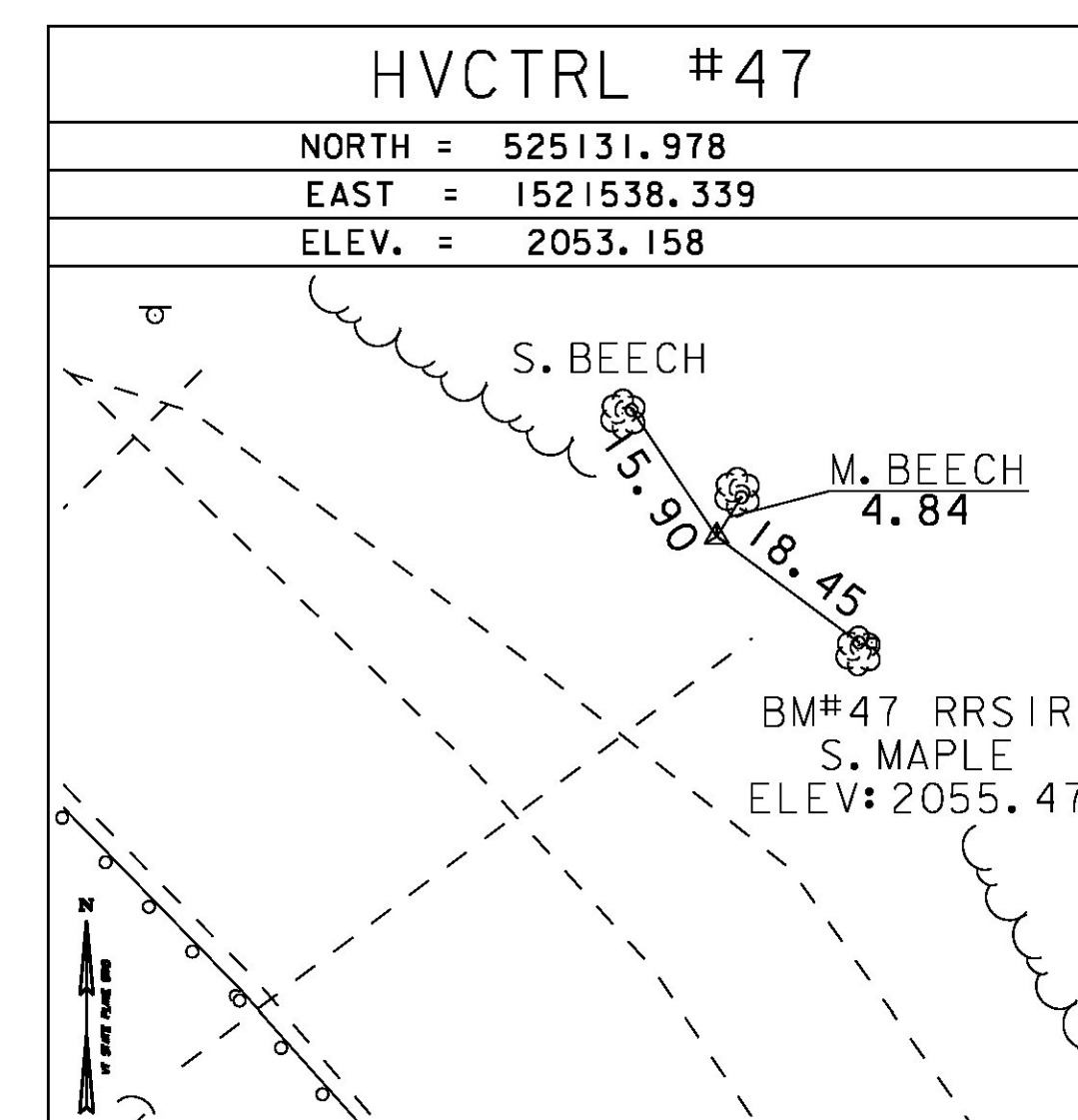
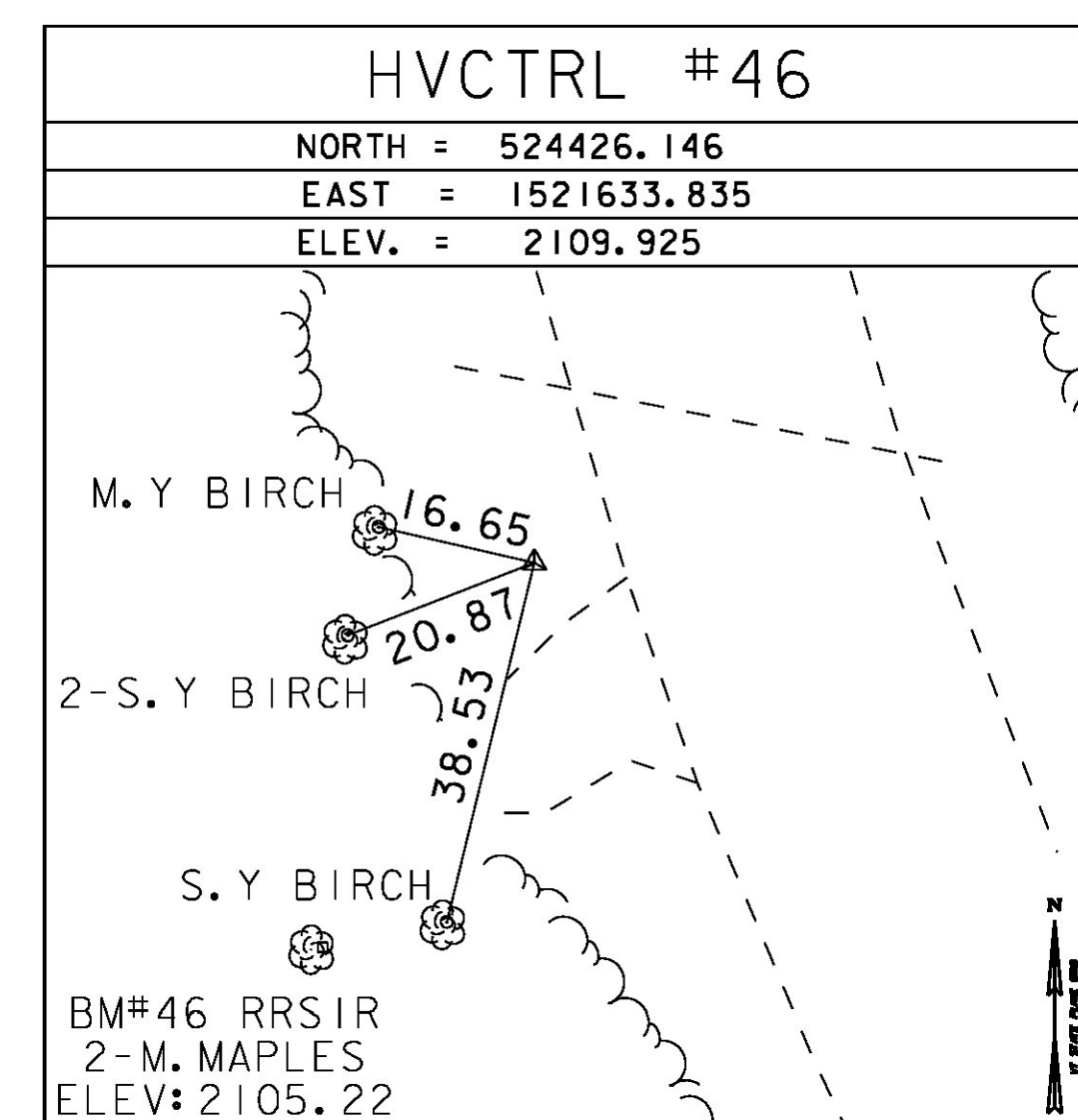
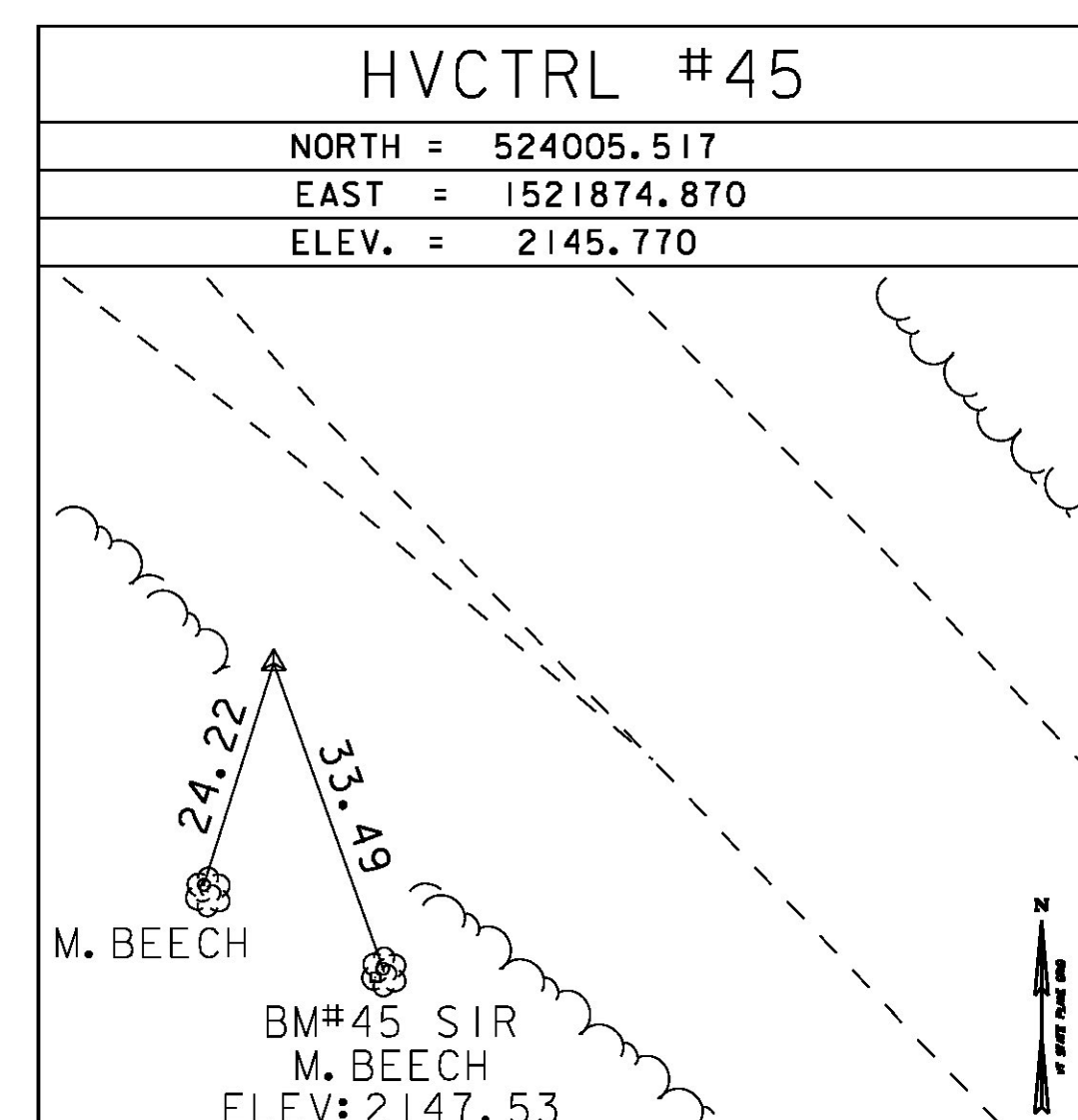
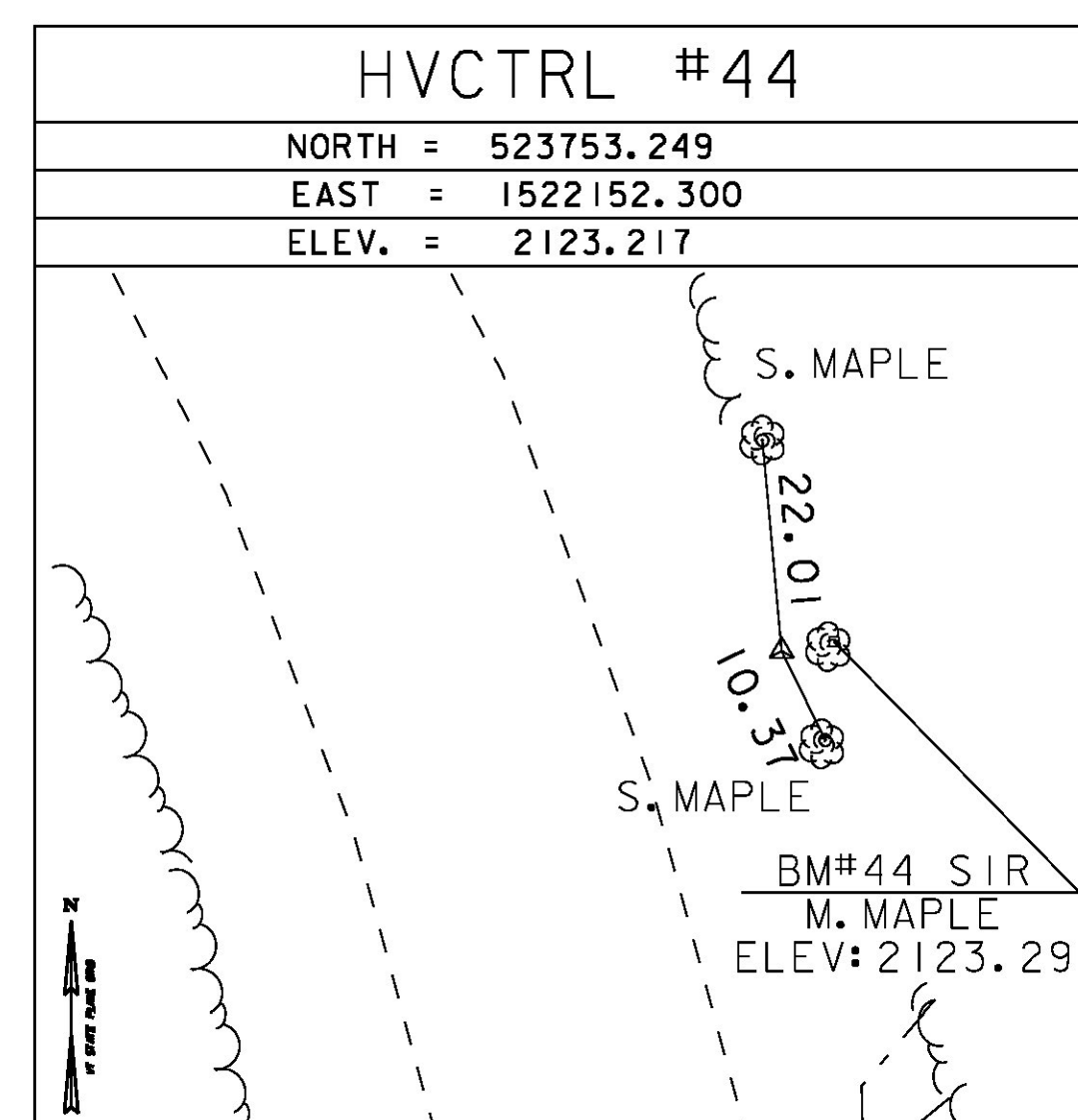
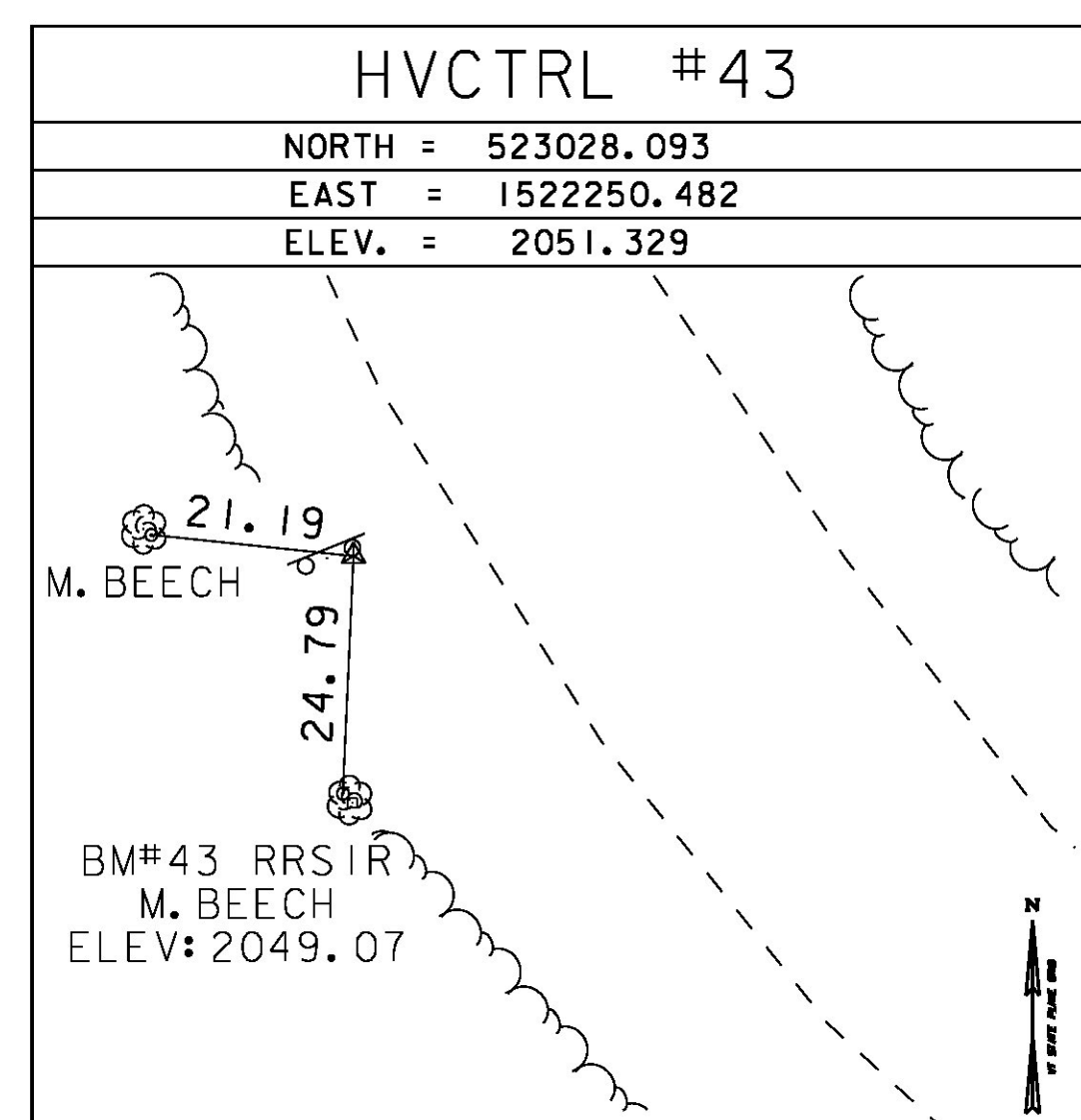


TRAVERSE TIES



TRAVERSE TIES



GPS CONTROL POINTS

HVCTRL #51

SNOW BOWL

NORTH = 524743.864  
EAST = 1519764.192  
ELEV. = 1822.151

GENERAL LOCATION, HANCOCK, VT. OWNERSHIP, MIDDLEBURY COLLEGE, 84 SOUTH SERVICE ROAD, MIDDLEBURY, VT 05753.

TO REACH FROM THE INTERSECTION OF VT ROUTE 100 AND VT ROUTE 125 GO WEST ALONG VT ROUTE 125 FOR TO THE INTERSECTION OF THE GRAVEL DRIVE ENTRANCE TO THE MIDDLEBURY COLLEGE SNOW BOWL LEFT. TURN LEFT AND FOLLOW THE ENTRANCE FOR ABOUT 0.1 MI (0.2 KM) TO THE NEIL STARR SHELTER AND THE SITE OF THE MARK WEST OF THE PARKING LOT.

THE MARK IS SET IN THE TOP OF A 1.3 M (4.3 FT) X 1.0 M (3.3 FT) ROCK OUTCROP WHICH PROJECTS SLIGHTLY ABOVE GROUND SURFACE. IT IS 23.1 M (75.8 FT) SOUTHEAST OF THE CENTERLINE OF A GRAVEL DRIVE LEADING TO THE BASE OF THE RAZORS EDGE SKI SLOPE, 36.4 M (119.4 FT) WEST OF THE SOUTH CORNER OF A WOODEN DECK ON THE REAR OF THE SHELTER, 45.3 M (148.6 FT) SOUTH OF THE CENTER OF SOUTH (INLET) END OF A 20 CM (8 INCH) DIAMETER METAL CULVERT, 35.0 M (114.8 FT) EAST OF THE NORTHEAST CORNER OF A SMALL WOODEN SHED HOUSING ELECTRICAL CONTROLS FOR THE SKI LIFT AND 31.5 M (103.3 FT) NORTH-NORTHEAST OF A SMALL ELECTRIC ACCESS BOX WITH MARKER POST WITH RED FLAG.

DATUM	NAVD 88
VERTICAL	NAVD 88
HORIZONTAL	NAD 83 CORS
ADJUSTMENT	COMPASS

PROJECT NAME:	HANCOCK
PROJECT NUMBER:	STP 2923 (1)
FILE NAME:	z10c252+i.dgn
PROJECT LEADER:	C. LATHROP
DESIGNED BY:	VTRANS
TIE SHEET	4
PLOT DATE:	3/18/2015
DRAWN BY:	R. BULLOCK
CHECKED BY:	VTRANS
SHEET	14 OF 207