

GPS CONTROL POINTS

HVCTRL #1
 CHESAPEAKE AZ MK
 NORTH = 519927.584
 EAST = 1550533.162
 ELEV. = 913.226

GENERAL LOCATION, HANCOCK, VT.

TO REACH FROM THE INTERSECTION OF VT ROUTE 100 AND VT ROUTE 125 GO SOUTH ALONG VT ROUTE 100 FOR ABOUT 25 M (82.0 FT) TO THE NORTH END OF THE VT ROUTE 100 BRIDGE OVER ROBBINS BRANCH AND THE SITE OF THE MARK ON THE RIGHT.

THE MARK IS SET IN THE TOP OF THE ABUTMENT AT THE NORTHWEST CORNER OF THE BRIDGE. THE MARK IS 5.6 M (18.4 FT) WEST OF AND ABOUT LEVEL WITH THE CENTERLINE OF VT ROUTE 100, 0.4 M (1.3 FT) NORTH OF THE SOUTH FACE OF THE ABUTMENT AND 0.4 M (1.3 FT) SOUTH OF A FIBERGLASS WITNESS POST.

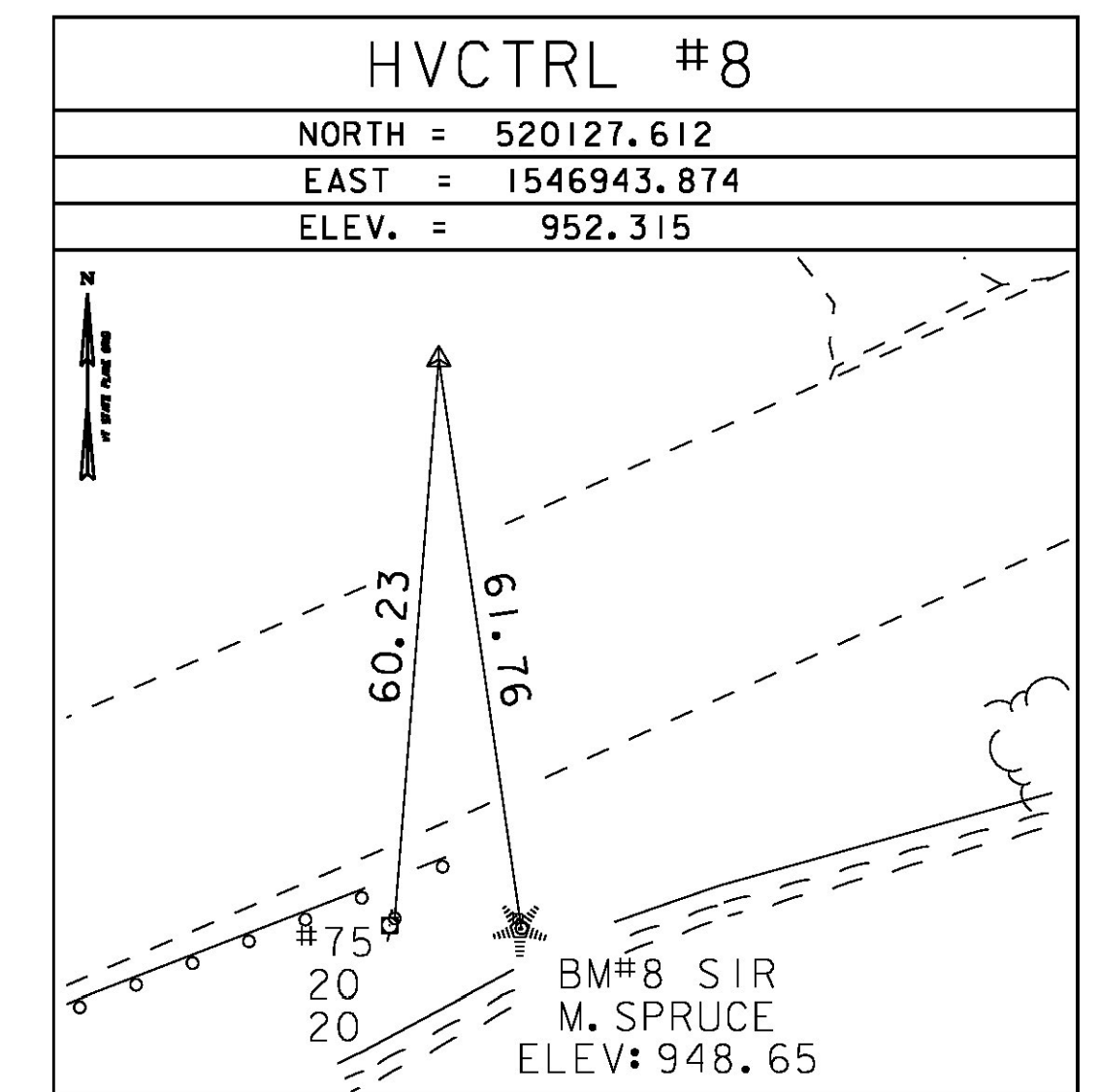
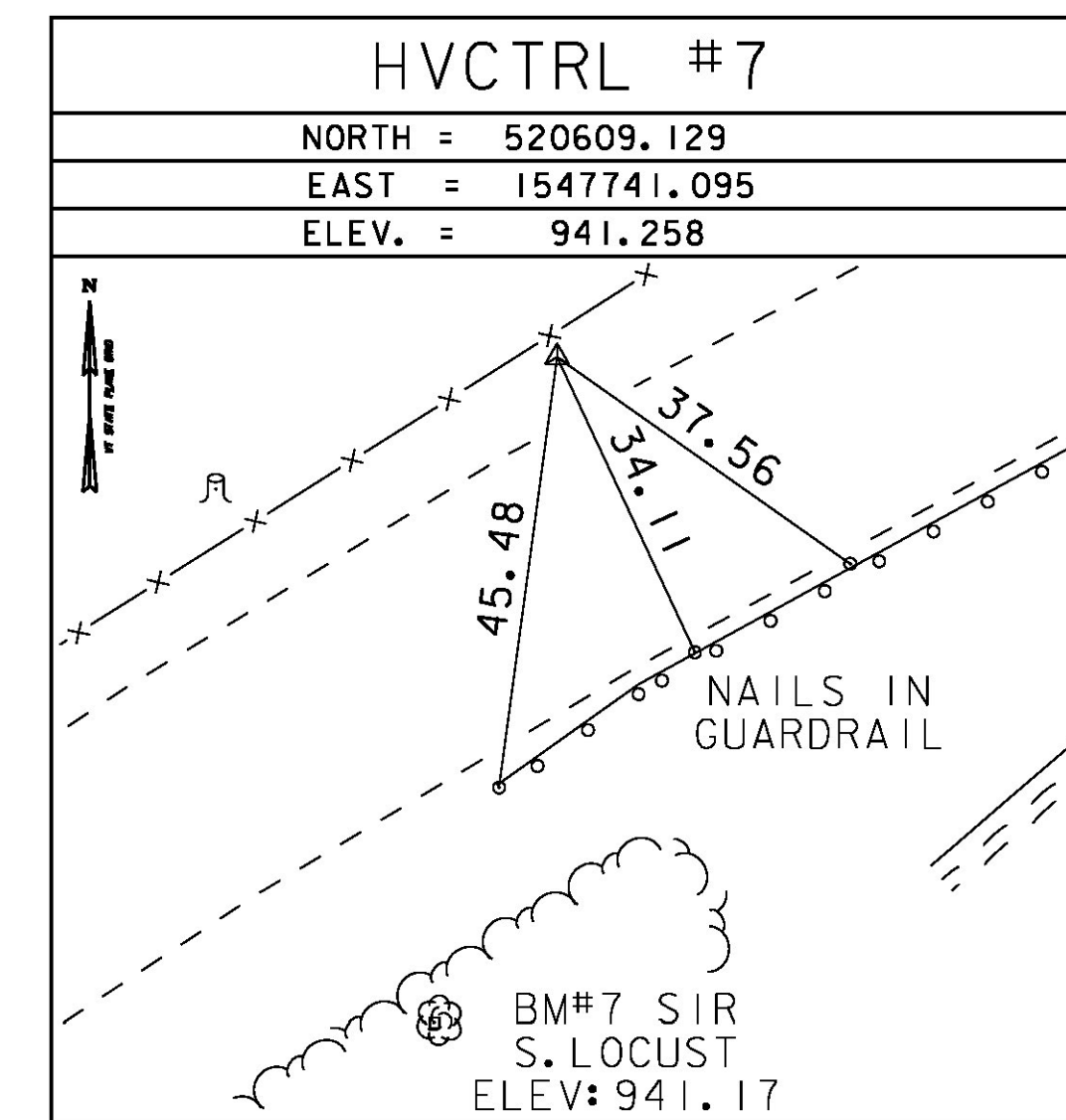
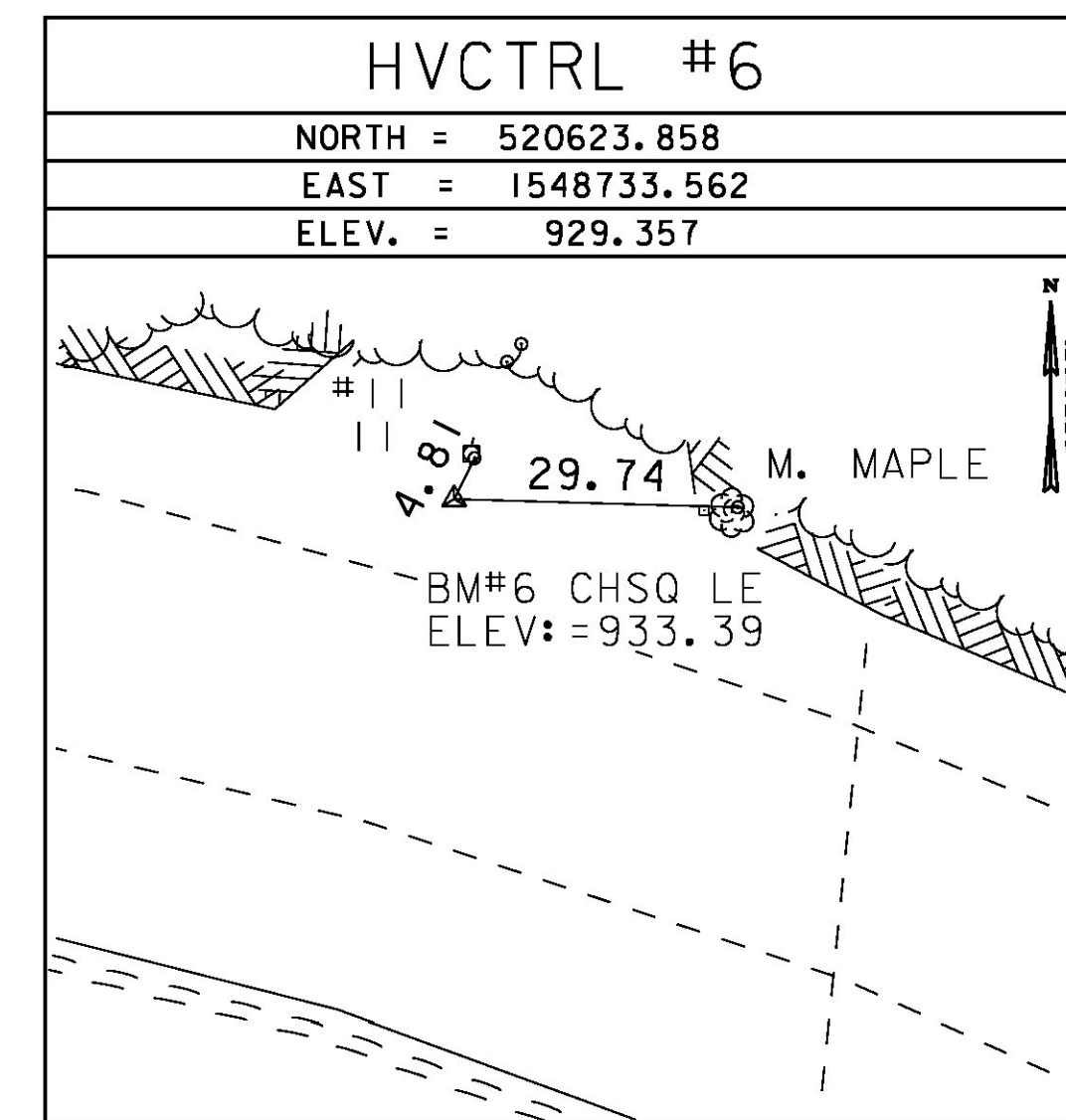
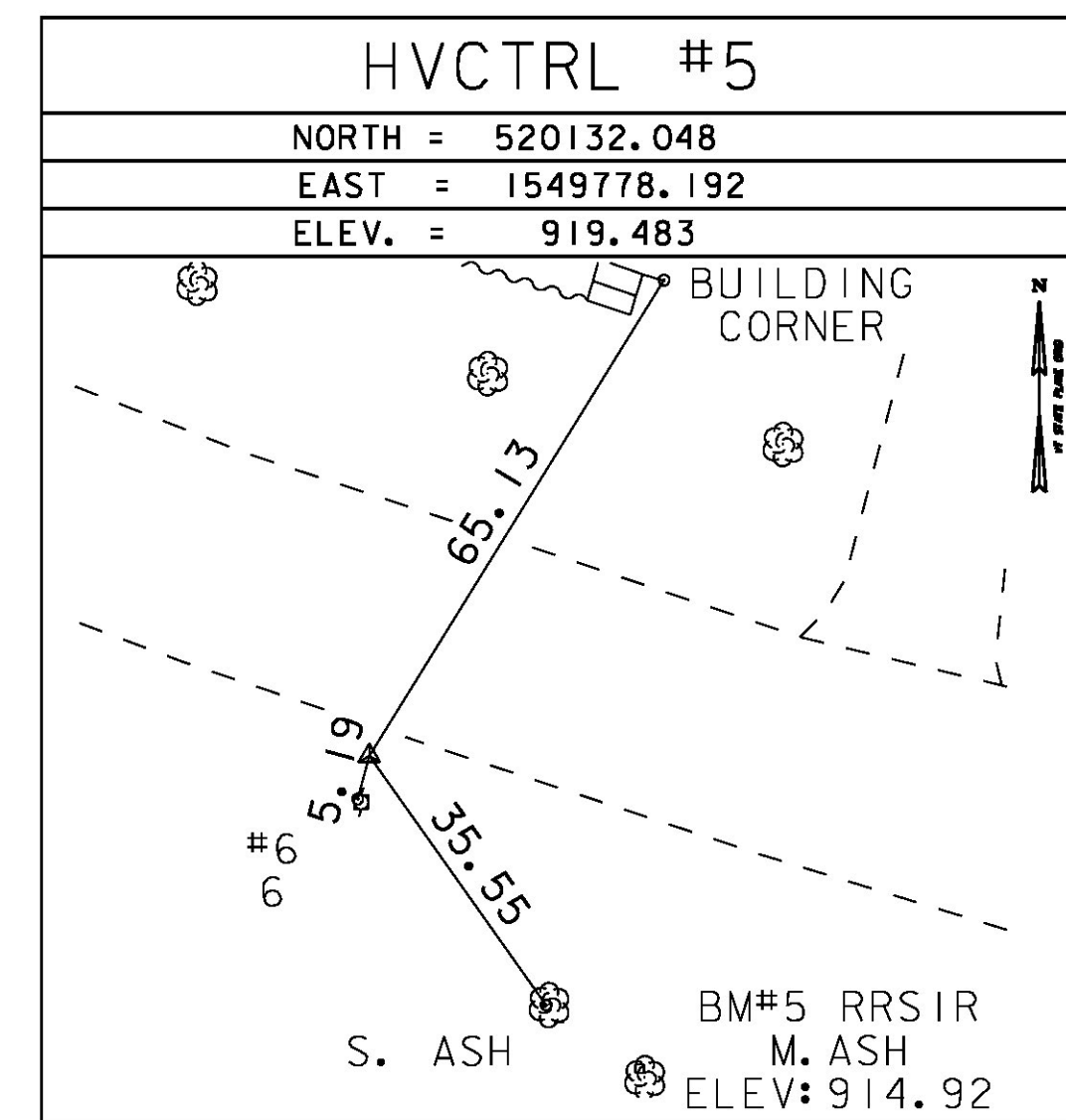
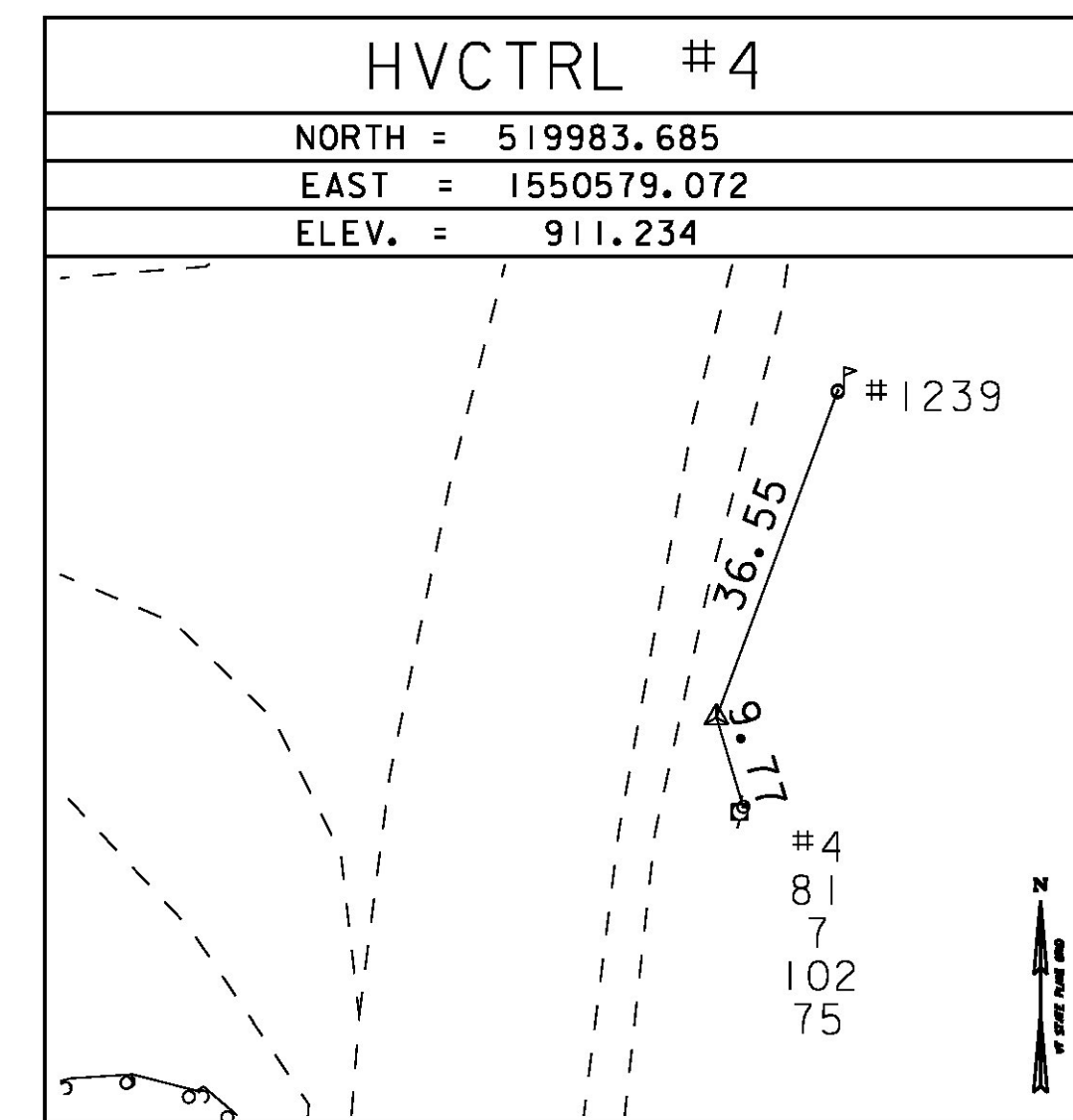
HVCTRL #2
 CHESAPEAKE
 NORTH = 517723.725
 EAST = 1550889.382
 ELEV. = 894.026

GENERAL LOCATION, HANCOCK, VT.

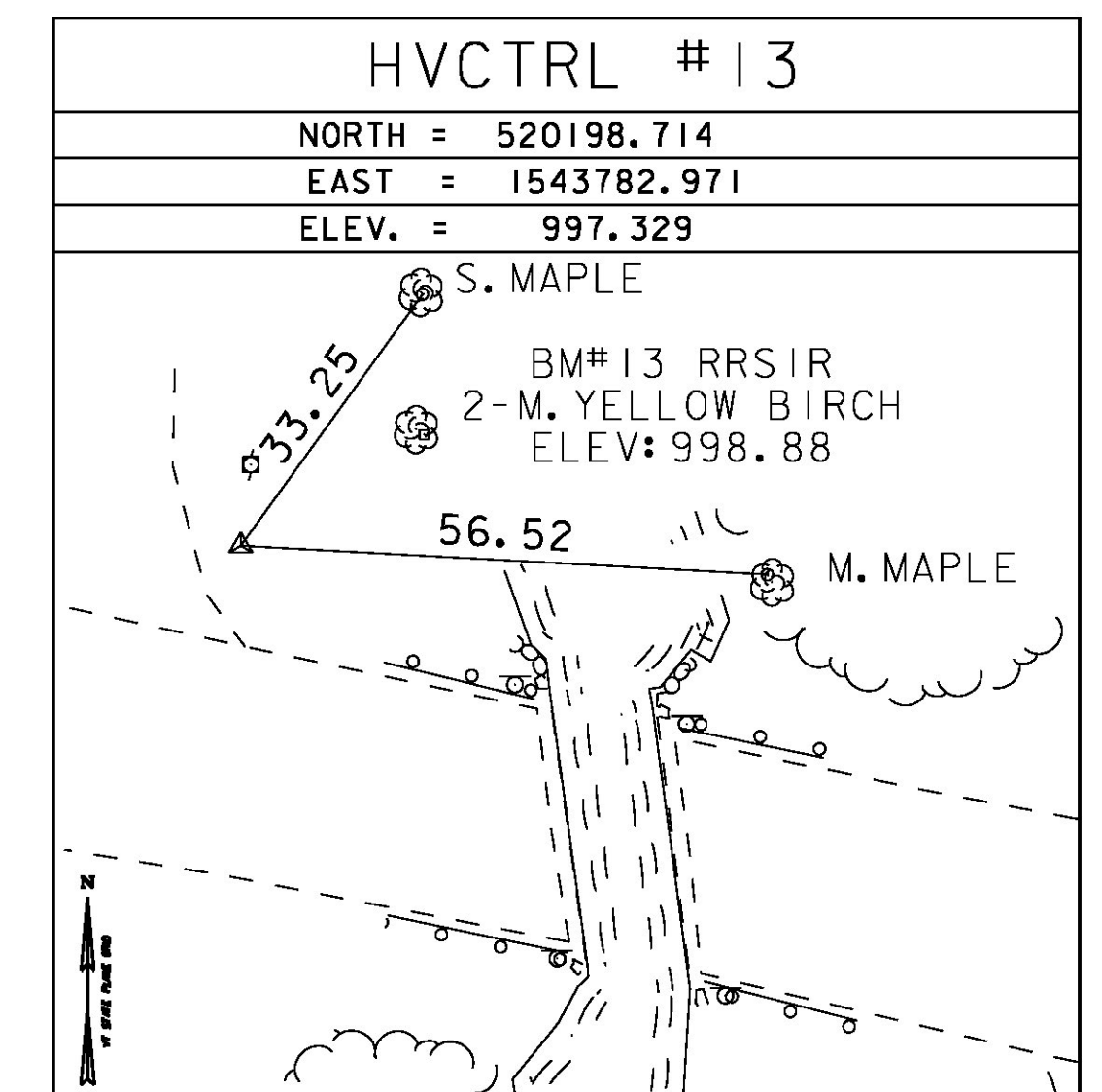
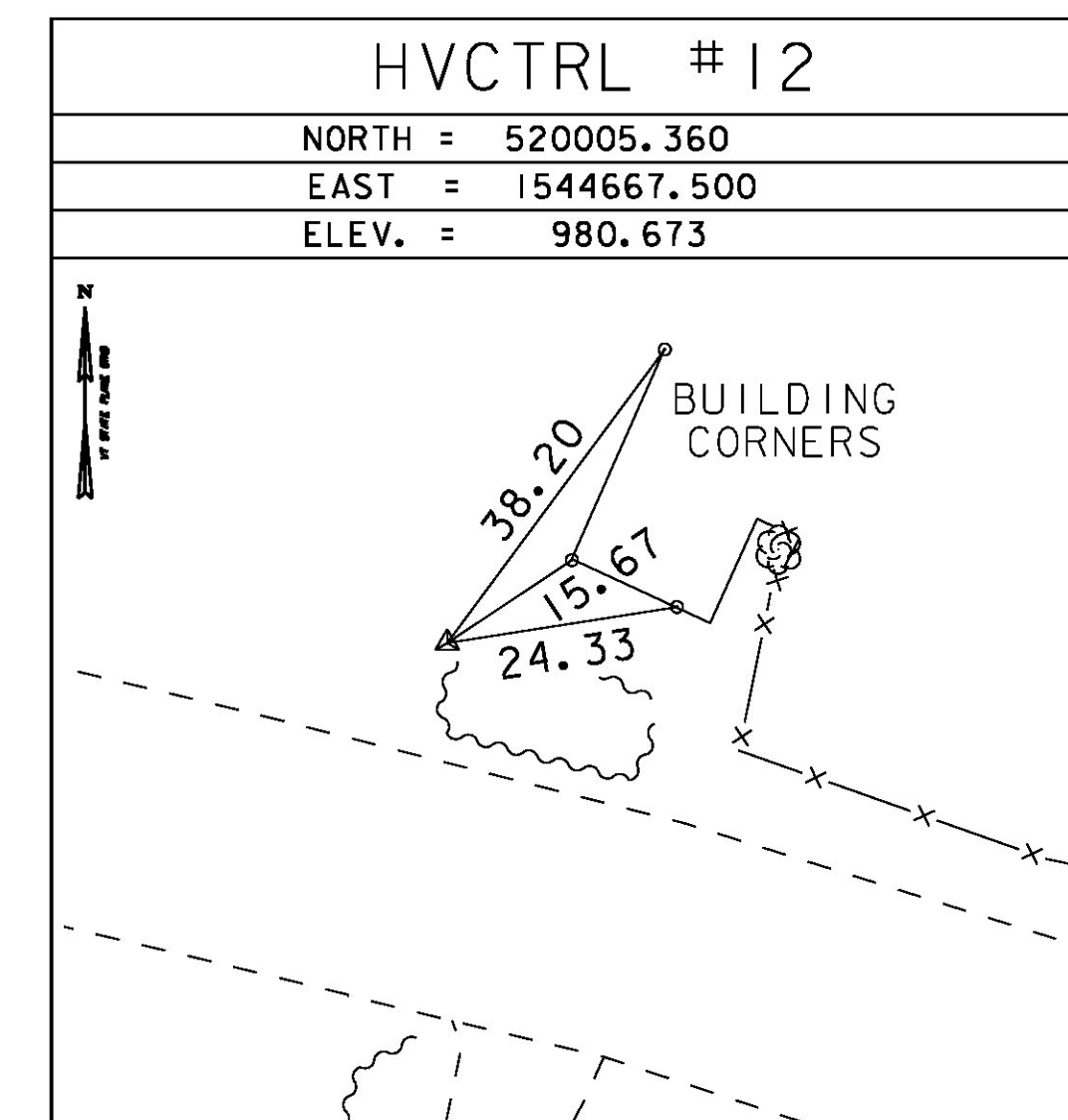
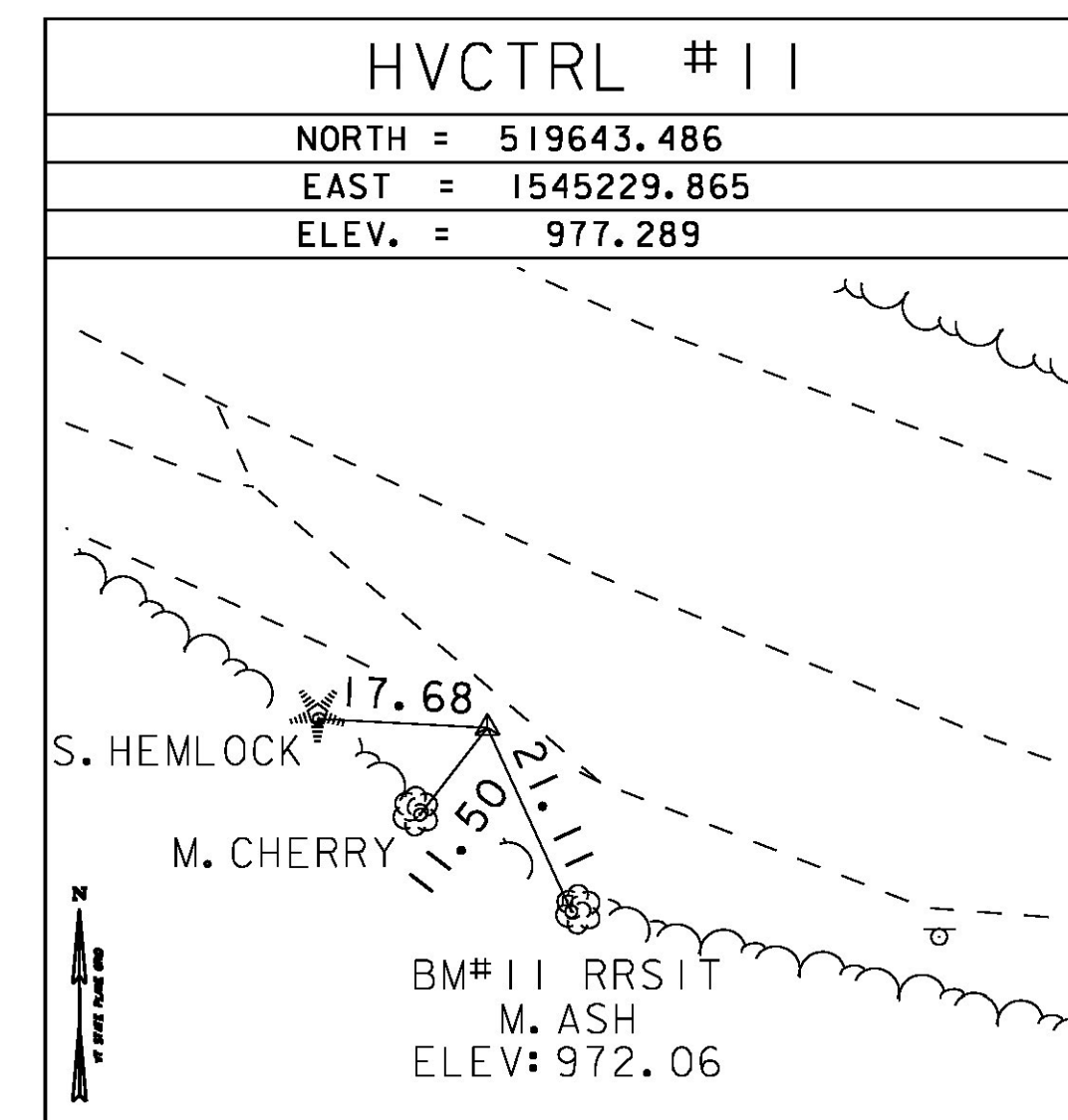
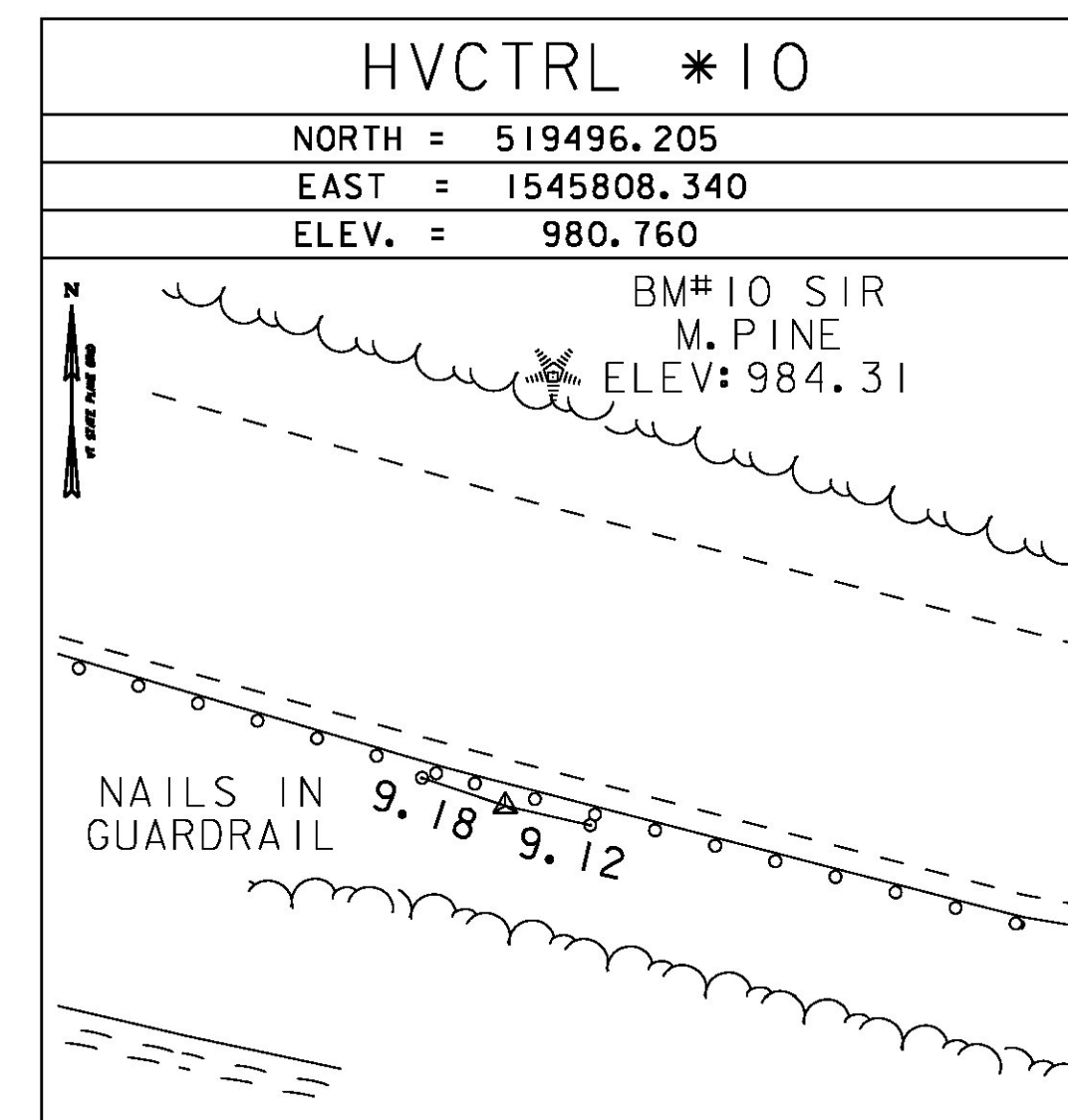
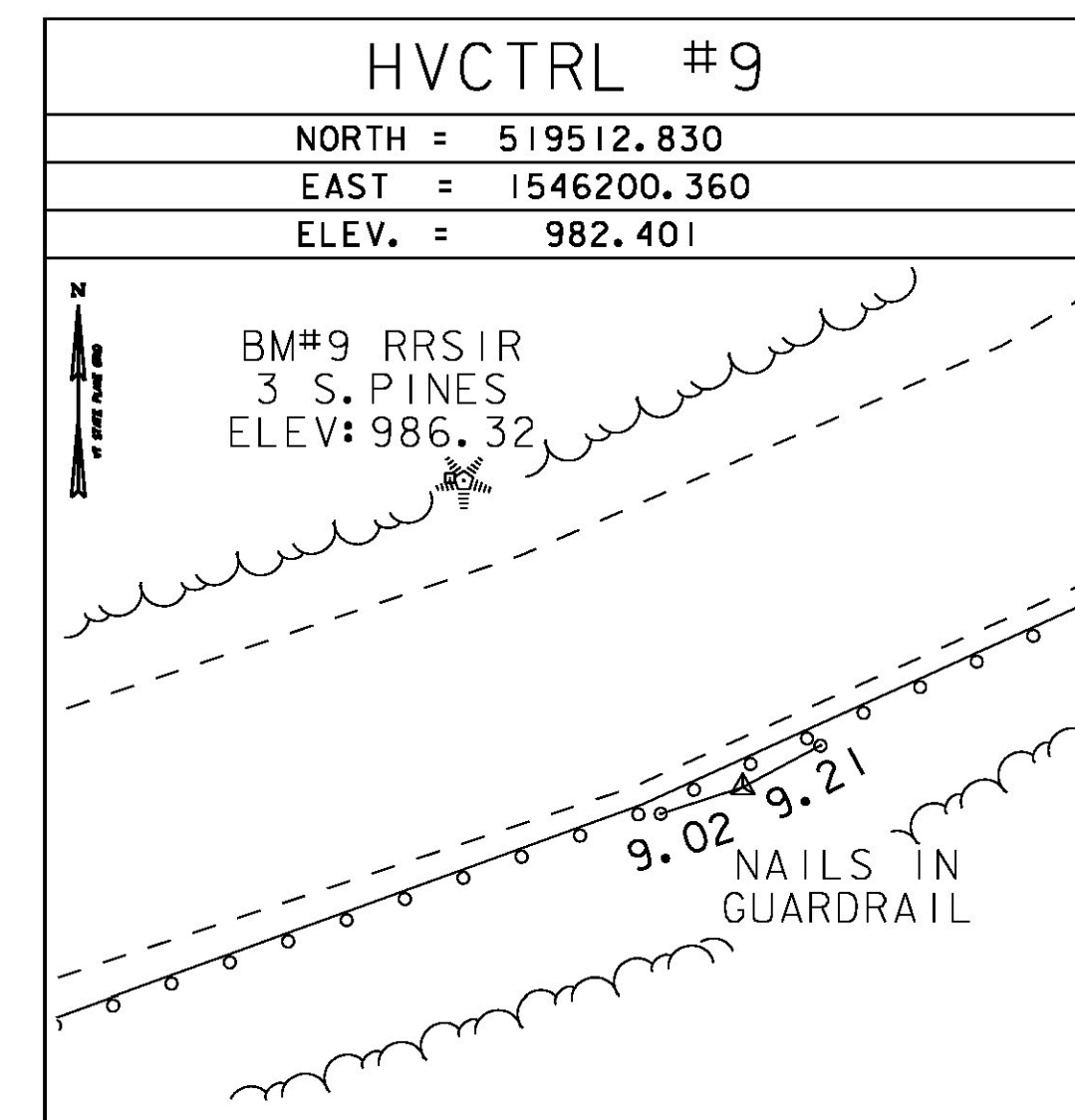
TO REACH FROM THE INTERSECTION OF VT ROUTE 100 AND VT ROUTE 125 IN HANCOCK GO SOUTH ALONG VT ROUTE 100 FOR 0.4 MI (0.6 KM) TO THE MARK ON THE LEFT. IT IS ABOUT 200 FT (61.0 M) NORTH OF THE HANCOCK FIRE DEPARTMENT.

THE MARK IS SET 2 CM (1 INCH) BELOW THE GROUND SURFACE IN THE TOP OF A 30 CM (12 INCH) DIAMETER CONCRETE MONUMENT SET 1.4 M (4.6 FT) DEEP. IT IS 3.6 M (11.8 FT) EAST OF AND ABOUT 0.2 M (0.7 FT) LOWER THAN THE EAST EDGE OF PAVEMENT OF VT ROUTE 100, 17.2 M (56.4 FT) SOUTH OF POLE NO 88/2, 3.6 M (11.8 FT) NORTHWEST OF THE SOUTHWEST CORNER OF A 1.3 M (4.3 FT) HIGH CHAIN LINK FENCE SURROUNDING A RECREATIONAL AREA, 11.2 M (36.7 FT) NORTH OF A 0.5 M (1.6 FT) SQUARE DROP INLET AND 1.3 M (4.3 FT) EAST OF THE CHAIN LINK FENCE AND A FIBERGLASS WITNESS POST.

TRAVERSE TIES



TRAVERSE TIES



DATUM	NAVD 88
VERTICAL	NAVD 88
HORIZONTAL	NAD 83 CORS
ADJUSTMENT	COMPASS

PROJECT NAME:	HANCOCK	
PROJECT NUMBER:	STP 2923 (1)	
FILE NAME:	z10c252+i.dgn	PLOT DATE: 3/18/2015
PROJECT LEADER:	C. LATHROP	DRAWN BY: R. BULLOCK
DESIGNED BY:	VTRANS	CHECKED BY: VTRANS
TIE SHEET 1		SHEET 11 OF 207