

**REHAB, DROP INLETS, CATCH BASINS, OR MANHOLES, CLASS I OR CLASS II**

- STA. 206+97 RT ✓
- STA. 207+05 LT ✓
- STA. 208+53 LT ✓
- STA. 208+68 RT ✓
- STA. 208+80 RT ✓
- STA. 209+00 RT ✓

**CHANGING ELEVATION OF SEWER MANHOLES**

- STA. 208+92 CL ✓

**ADJUST ELEVATION OF VALVE BOX**

- STA. 209+14 LT
- STA. 209+75 LT
- STA. 209+80 RT

**COMMON EXCAVATION**

- STA. 208+63 - STA. 208+69 LT
- STA. 208+65 - STA. 208+70 RT
- STA. 209+05 - STA. 209+10 RT

**PORTLAND CEMENT CONCRETE SIDEWALK, 5 INCH**

- STA. 208+63 - STA. 208+69 LT ✓
- STA. 208+65 - STA. 208+70 RT ✓
- STA. 209+05 - STA. 209+10 RT ✓

**SUBBASE OF CRUSHED GRAVEL, FINE GRADED**

- STA. 208+63 - STA. 208+69 LT
- STA. 208+65 - STA. 208+70 RT
- STA. 209+05 - STA. 209+10 RT

**REMOVING AND RESETTING CURB**

- STA. 208+53 - STA. 208+79 LT
- STA. 208+55 - STA. 208+70 RT
- STA. 209+07 - STA. 209+21 RT

**DETECTABLE WARNING SURFACES**

- STA. 208+68 LT (8 SF) ✓ 208+67
- STA. 208+70 RT (8 SF) ✓ 208+68
- STA. 209+08 RT (8 SF) ✓ 209+07

**DURABLE 4 INCH WHITE LINE, TYPE I TAPE**

- STA. 205+75 - STA. 211+25 (SOLID LT & RT) (WITH BREAKS AT SIDEROADS & CROSSWALKS)
- STA. 208+87 RT (EDGELINES PROSPECT ST)

**DURABLE 4 INCH YELLOW LINE, TYPE I TAPE**

- STA. 205+75 - STA. 211+25 (SOLID LT & RT) (WITH BREAKS AT SIDEROADS & CROSSWALKS)
- STA. 208+87 RT (CENTERLINE PROSPECT ST)

**TEMPORARY 4 INCH WHITE LINE, PAINT**

- STA. 205+75 - STA. 211+25 (SOLID LT & RT) (WITH BREAKS AT SIDEROADS & CROSSWALKS)
- STA. 208+87 RT (EDGELINES PROSPECT ST)

**TEMPORARY 4 INCH YELLOW LINE, PAINT**

- STA. 205+75 - STA. 211+25 (SOLID LT & RT) (WITH BREAKS AT SIDEROADS & CROSSWALKS)
- STA. 208+87 RT (CENTERLINE PROSPECT ST)

**DURABLE 24 INCH STOP BAR, TYPE I TAPE**

- STA. 208+87 - STA. 209+00 RT

**TEMPORARY 24 INCH STOP BAR, PAINT**

- STA. 208+87 - STA. 209+00 RT

**REMOVING SIGNS**

AS SHOWN - 7

**DURABLE LETTER OR SYMBOL, TYPE I TAPE**

- STA. 208+91 RT "STOP"

**TEMPORARY LETTER OR SYMBOL, PAINT**

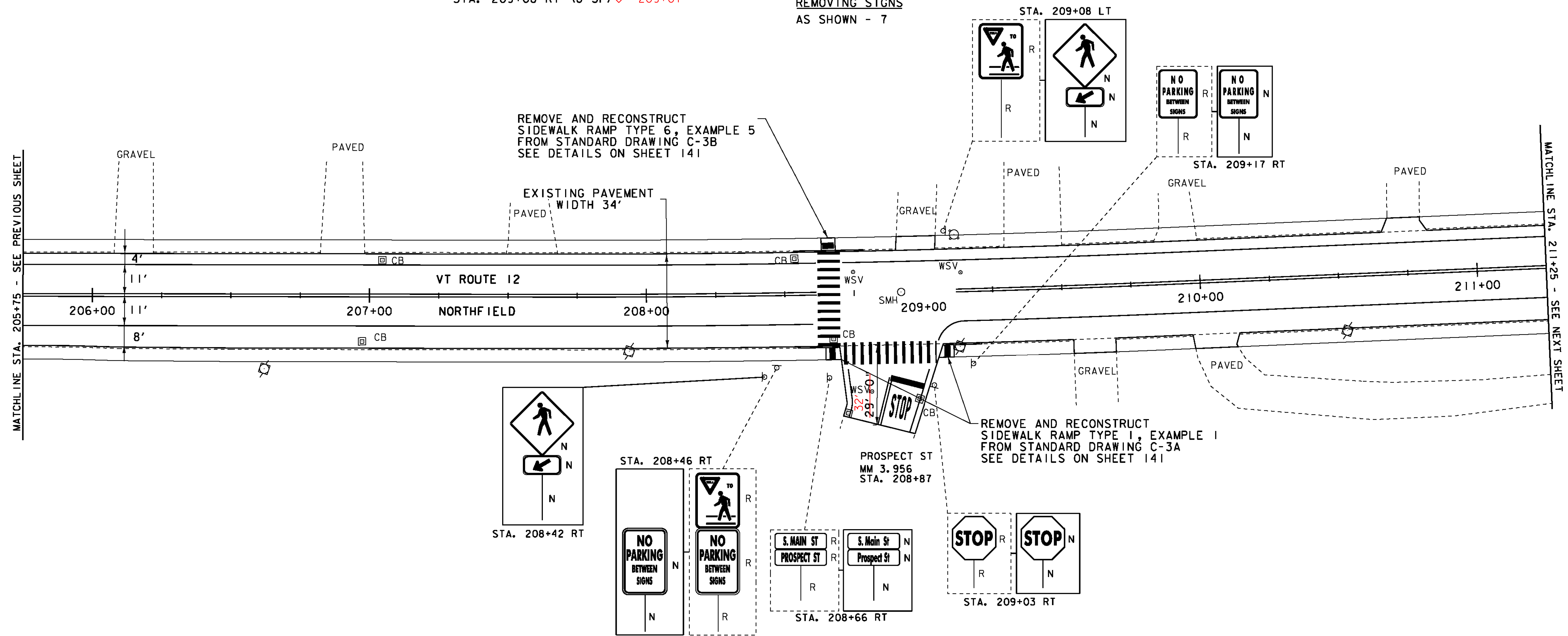
- STA. 208+91 RT "STOP"

**DURABLE CROSSWALK MARKING, TYPE I TAPE**

- STA. 208+66 LT & RT
- STA. 208+71 - STA. 209+04 RT

**TEMPORARY CROSSWALK MARKING, PAINT**

- STA. 208+66 LT & RT
- STA. 208+71 - STA. 209+04 RT



- LEGEND**
- SIGN
  - HYDRANT
  - MANHOLE
  - VALVE
  - GAS PIPELINE MARKER
  - CATCH BASIN / DROP INLET
  - CURB INLET
  - ⊠ TRAFFIC CONTROL BOX
  - ⊠ PARKING METER
  - ⊠ UTILITY POLE
  - ⊠ PARKING METER
  - LIGHT POLE
  - EX. DETECTABLE WARNINGS
  - JUNCTION BOX
  - ⊠ PED BUTTON
  - ⊠ ELECTRICAL BOX
  - ⊠ SIGNAL
  - ⊠ PEDESTAL POST
  - ⊠ STRAIN POLE
  - CAMERA
  - VIDEO DETECTION ZONE
- SIGN LEGEND**
- R = REMOVE
  - R&S = REMOVE AND SALVAGE
  - RET = RETAIN
  - S = SALVAGE
  - N = NEW
  - B-B = BACK TO BACK

<b>PROJECT LAYOUT SHEET 46</b>	PROJECT NAME: BETHEL-NORTHFIELD
	PROJECT NUMBER: STP 2922(I)
FILE NAME: piOC246.dgn	PLOT DATE: 1/3/13
PROJECT LEADER: CDL	DRAWN BY: JBG
DESIGNED BY: SJL	CHECKED BY: CDL
PLOT FILE: piOC246_65.1	SHEET 65 OF 149

NOT TO SCALE