

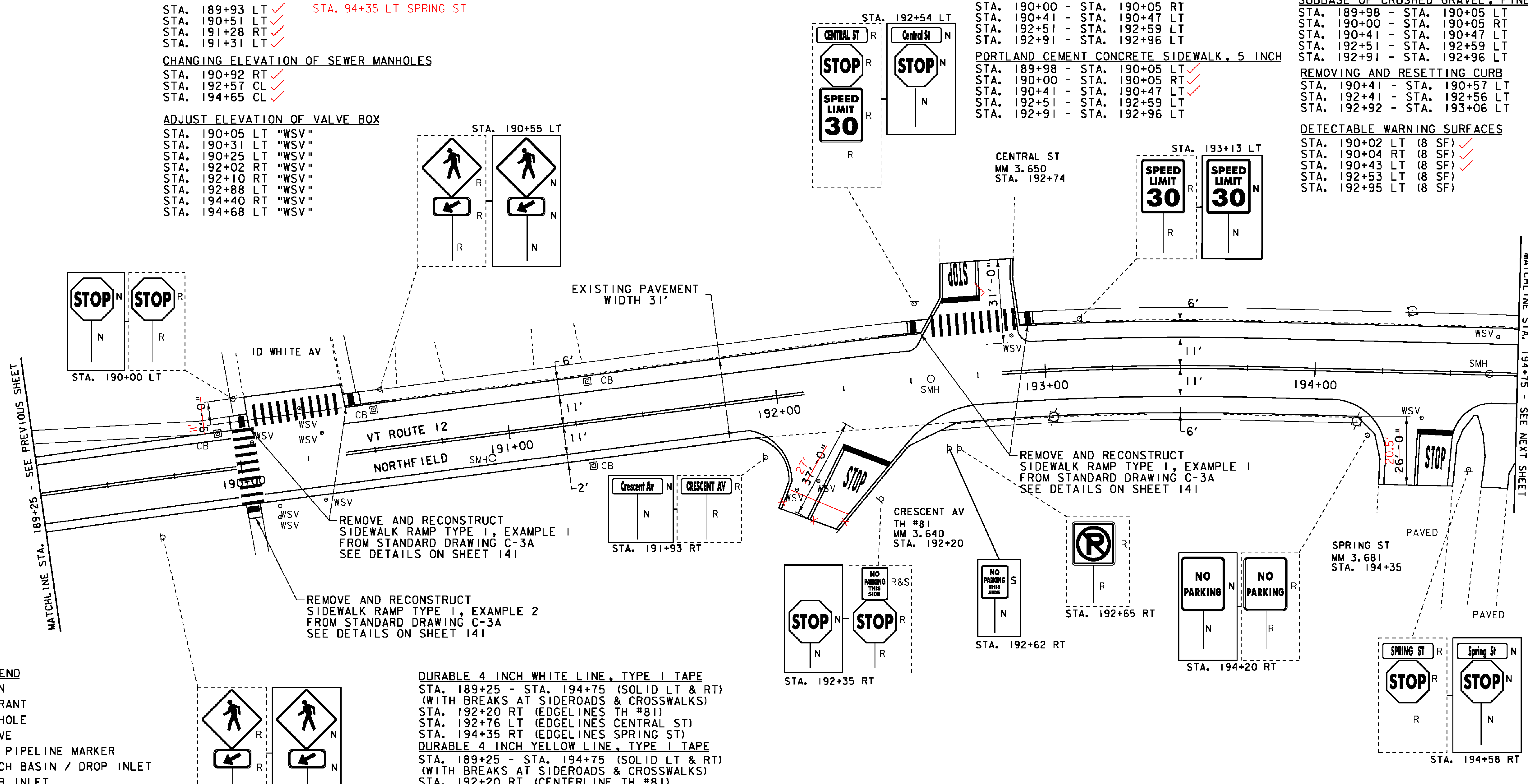
**REHAB. DROP INLETS, CATCH BASINS, OR MANHOLES, CLASS I OR CLASS II**  
 STA. 189+93 LT ✓  
 STA. 190+51 LT ✓  
 STA. 191+28 RT ✓  
 STA. 191+31 LT ✓  
 STA. 194+35 LT SPRING ST

**CHANGING ELEVATION OF SEWER MANHOLES**  
 STA. 190+92 RT ✓  
 STA. 192+57 CL ✓  
 STA. 194+65 CL ✓

**ADJUST ELEVATION OF VALVE BOX**  
 STA. 190+05 LT "WSV"  
 STA. 190+31 LT "WSV"  
 STA. 190+25 LT "WSV"  
 STA. 192+02 RT "WSV"  
 STA. 192+10 RT "WSV"  
 STA. 192+88 LT "WSV"  
 STA. 194+40 RT "WSV"  
 STA. 194+68 LT "WSV"

**COMMON EXCAVATION**  
 STA. 189+98 - STA. 190+05 LT  
 STA. 190+00 - STA. 190+05 RT  
 STA. 190+41 - STA. 190+47 LT  
 STA. 192+51 - STA. 192+59 LT  
 STA. 192+91 - STA. 192+96 LT  
**PORTLAND CEMENT CONCRETE SIDEWALK, 5 INCH**  
 STA. 189+98 - STA. 190+05 LT ✓  
 STA. 190+00 - STA. 190+05 RT ✓  
 STA. 190+41 - STA. 190+47 LT ✓  
 STA. 192+51 - STA. 192+59 LT ✓  
 STA. 192+91 - STA. 192+96 LT ✓

**SUBBASE OF CRUSHED GRAVEL, FINE GRADED**  
 STA. 189+98 - STA. 190+05 LT  
 STA. 190+00 - STA. 190+05 RT  
 STA. 190+41 - STA. 190+47 LT  
 STA. 192+51 - STA. 192+59 LT  
 STA. 192+91 - STA. 192+96 LT  
**REMOVING AND RESETTING CURB**  
 STA. 190+41 - STA. 190+57 LT  
 STA. 192+41 - STA. 192+56 LT  
 STA. 192+92 - STA. 193+06 LT  
**DETECTABLE WARNING SURFACES**  
 STA. 190+02 LT (8 SF) ✓  
 STA. 190+04 RT (8 SF) ✓  
 STA. 190+43 LT (8 SF) ✓  
 STA. 192+53 LT (8 SF) ✓  
 STA. 192+95 LT (8 SF) ✓



- LEGEND**
- HYDRANT
  - MANHOLE
  - VALVE
  - GAS PIPELINE MARKER
  - CATCH BASIN / DROP INLET
  - CURB INLET
  - ⊠ TRAFFIC CONTROL BOX
  - ⊠ PARKING METER
  - UTILITY POLE
  - LIGHT POLE
  - ▨ EX. DETECTABLE WARNINGS
  - JUNCTION BOX
  - ⊠ PED BUTTON
  - ⊠ ELECTRICAL BOX
  - SIGNAL
  - ⊠ PEDESTAL POST
  - ▨ DETECTABLE WARNINGS

**SIGN LEGEND**  
 R = REMOVE  
 R&S = REMOVE AND SALVAGE  
 RET = RETAIN  
 S = SALVAGE  
 N = NEW  
 B-B = BACK TO BACK

**DURABLE 4 INCH WHITE LINE, TYPE I TAPE**  
 STA. 189+25 - STA. 194+75 (SOLID LT & RT) (WITH BREAKS AT SIDEROADS & CROSSWALKS)  
 STA. 192+20 RT (EDGELINES TH #81)  
 STA. 192+76 LT (EDGELINES CENTRAL ST)  
 STA. 194+35 RT (EDGELINES SPRING ST)  
**DURABLE 4 INCH YELLOW LINE, TYPE I TAPE**  
 STA. 189+25 - STA. 194+75 (SOLID LT & RT) (WITH BREAKS AT SIDEROADS & CROSSWALKS)  
 STA. 192+20 RT (CENTERLINE TH #81)  
 STA. 192+76 LT (CENTERLINE CENTRAL ST)  
 STA. 194+35 RT (CENTERLINE SPRING ST)  
**TEMPORARY 4 INCH WHITE LINE, PAINT**  
 STA. 189+25 - STA. 194+75 (SOLID LT & RT) (WITH BREAKS AT SIDEROADS & CROSSWALKS)  
 STA. 192+20 RT (CENTERLINE TH #81)  
 STA. 192+76 LT (CENTERLINE CENTRAL ST)  
 STA. 194+35 RT (CENTERLINE SPRING ST)  
**TEMPORARY 4 INCH YELLOW LINE, PAINT**  
 STA. 189+25 - STA. 194+75 (SOLID LT & RT) (WITH BREAKS AT SIDEROADS & CROSSWALKS)  
 STA. 192+20 RT (CENTERLINE TH #81)  
 STA. 192+76 LT (CENTERLINE CENTRAL ST)  
 STA. 194+35 RT (CENTERLINE SPRING ST)  
**DURABLE 24 INCH STOP BAR, TYPE I TAPE**  
 STA. 192+21 - STA. 192+40 RT  
 STA. 192+63 - STA. 192+78 LT  
 STA. 194+38 - STA. 194+53 RT  
**TEMPORARY 24 INCH STOP BAR, PAINT**  
 STA. 192+21 - STA. 192+40 RT  
 STA. 192+63 - STA. 192+78 LT  
 STA. 194+38 - STA. 194+53 RT

**DURABLE LETTER OR SYMBOL, TYPE I TAPE**  
 STA. 192+25 RT "STOP"  
 STA. 192+70 LT "STOP"  
 STA. 194+46 RT "STOP"  
**TEMPORARY LETTER OR SYMBOL, PAINT**  
 STA. 192+25 RT "STOP"  
 STA. 192+70 LT "STOP"  
 STA. 194+46 RT "STOP"  
**DURABLE CROSSWALK MARKING, TYPE I TAPE**  
 STA. 190+02 LT & RT  
 STA. 190+07 - STA. 190+38 LT  
 STA. 192+60 - STA. 192+91 LT  
**TEMPORARY CROSSWALK MARKING, PAINT**  
 STA. 190+02 LT & RT  
 STA. 190+07 - STA. 190+38 LT  
 STA. 192+60 - STA. 192+91 LT

**ERECTING SALVAGED SIGNS**  
 AS SHOWN - 1  
**REMOVING SIGNS**  
 AS SHOWN - 16

<b>PROJECT LAYOUT SHEET 43</b>	PROJECT NAME: BETHEL-NORTHFIELD	PLOT DATE: 1/3/13
	PROJECT NUMBER: STP 2922(I)	DRAWN BY: JBG
	FILE NAME: piOC246.dgn	DESIGNED BY: SJL
	PLOT FILE: piOC246_62.1	CHECKED BY: CDL
		SHEET 62 OF 149