

ADJUST ELEVATION OF VALVE BOX

STA. 235+52 RT "WSV"
 STA. 235+58 RT "WSV"
 STA. 166+61 RT "WSV"
 STA. 166+61 RT "WSV"
 STA. 167+00 LT "WSV"
 STA. 167+20 LT "WSV"

DURABLE 4 INCH WHITE LINE, TYPE I TAPE

STA. 231+50 - STA. 236+38 (SOLID LT & RT)
 STA. 165+75 - STA. 167+25 (SOLID LT & RT)

DURABLE 4 INCH YELLOW LINE, TYPE I TAPE

STA. 231+50 - STA. 236+11 (SOLID LT & RT)
 STA. 165+75 - STA. 167+25 (SOLID LT & RT)
 (WITH BREAKS AT SIDE ROADS)

TEMPORARY 4 INCH WHITE LINE, PAINT

STA. 231+50 - STA. 236+38 (SOLID LT & RT)
 STA. 165+75 - STA. 167+25 (SOLID LT & RT)

TEMPORARY 4 INCH YELLOW LINE, PAINT

STA. 231+50 - STA. 236+11 (SOLID LT & RT)
 STA. 165+75 - STA. 167+25 (SOLID LT & RT)
 (WITH BREAKS AT SIDE ROADS)

DURABLE 24 INCH STOP BAR, TYPE I TAPE

STA. 166+10 - STA. 166+56 LT

TEMPORARY 24 INCH STOP BAR, PAINT

STA. 166+10 - STA. 166+56 LT

DURABLE LETTER OR SYMBOL, TYPE I TAPE

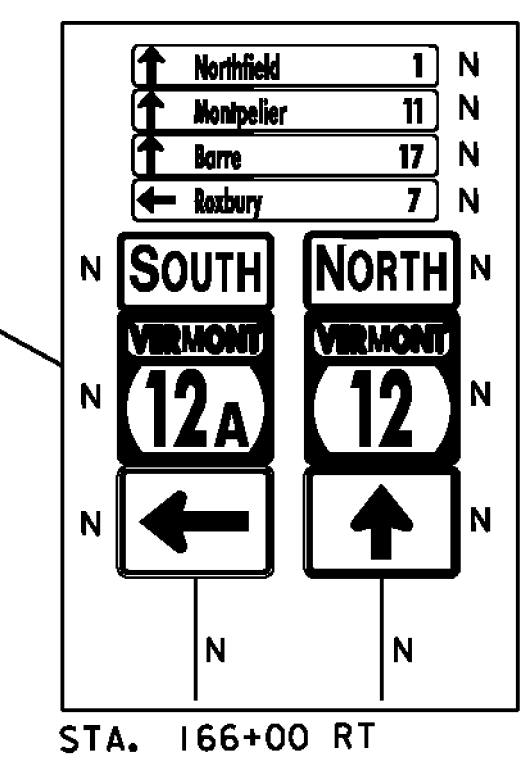
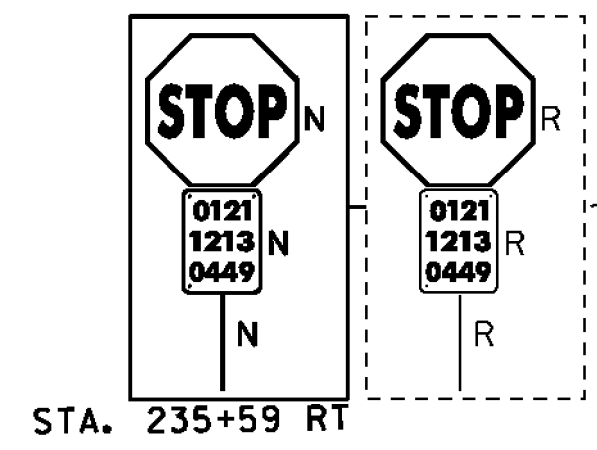
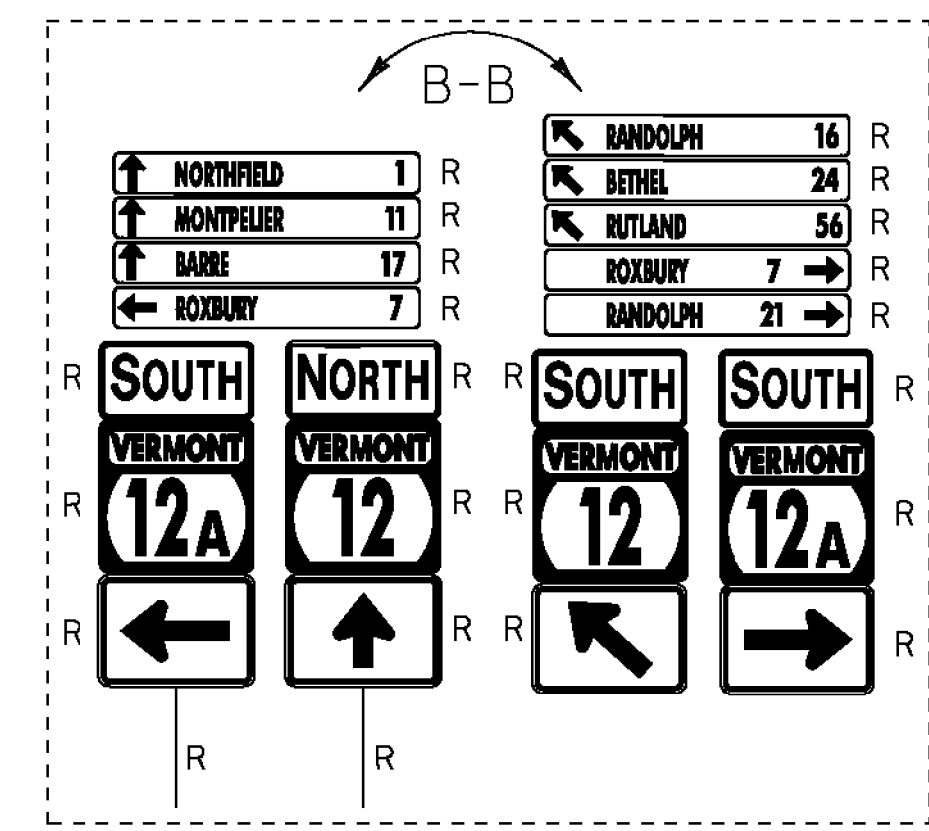
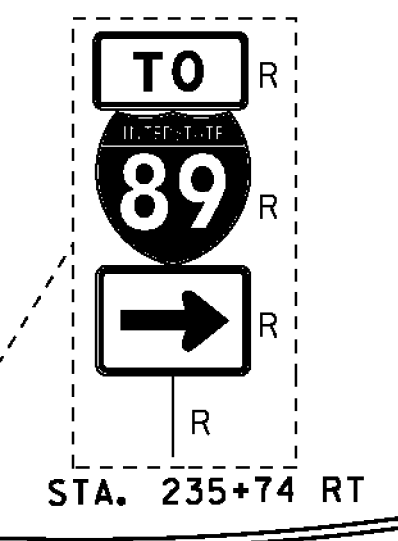
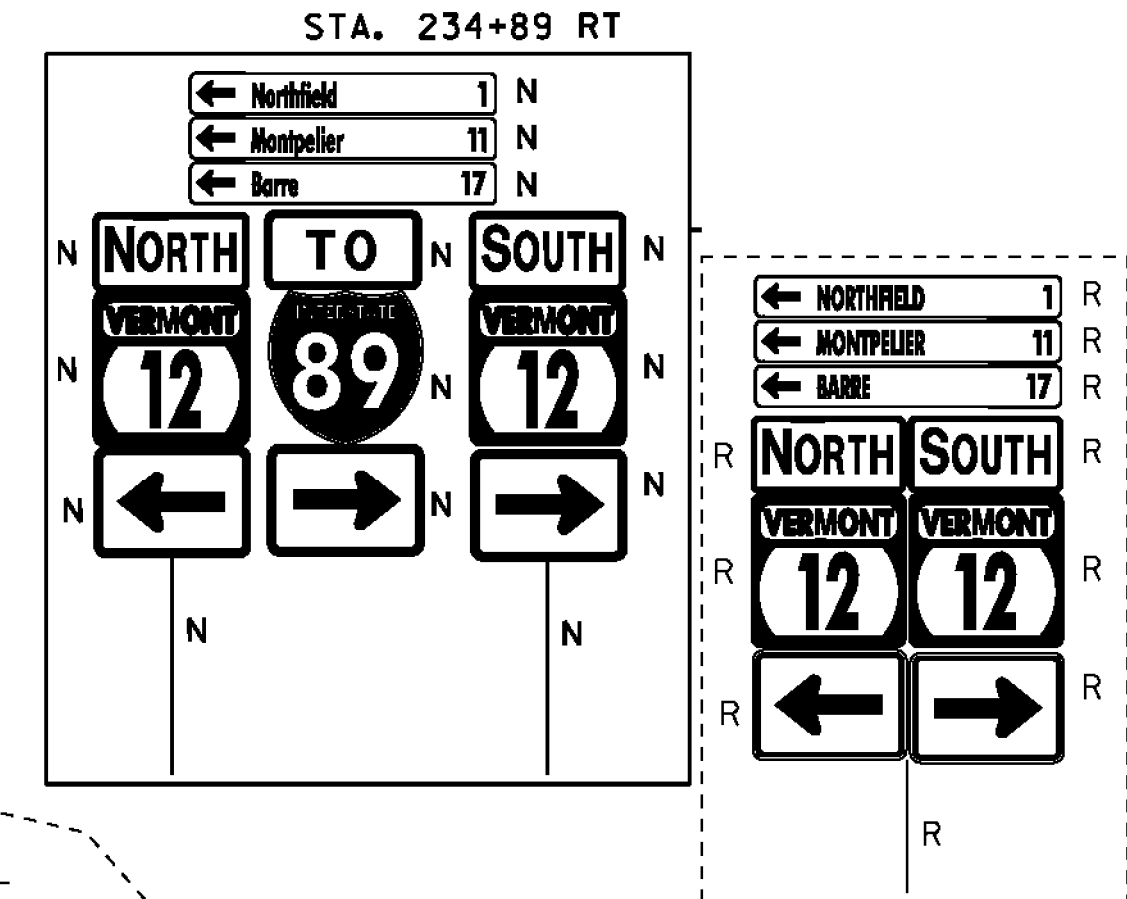
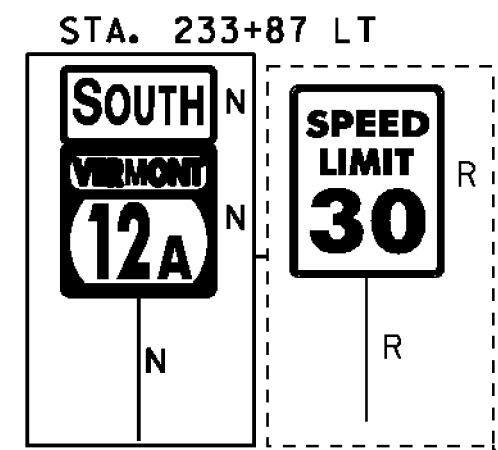
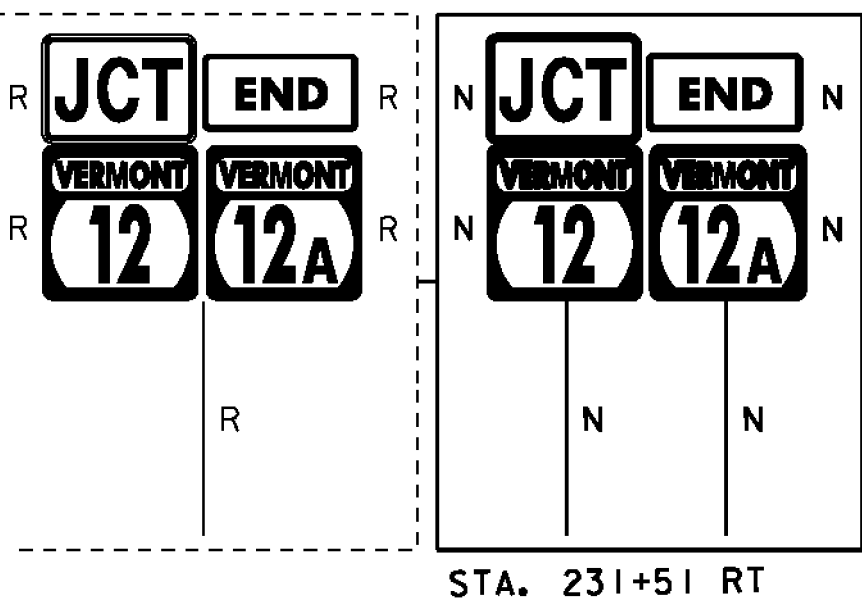
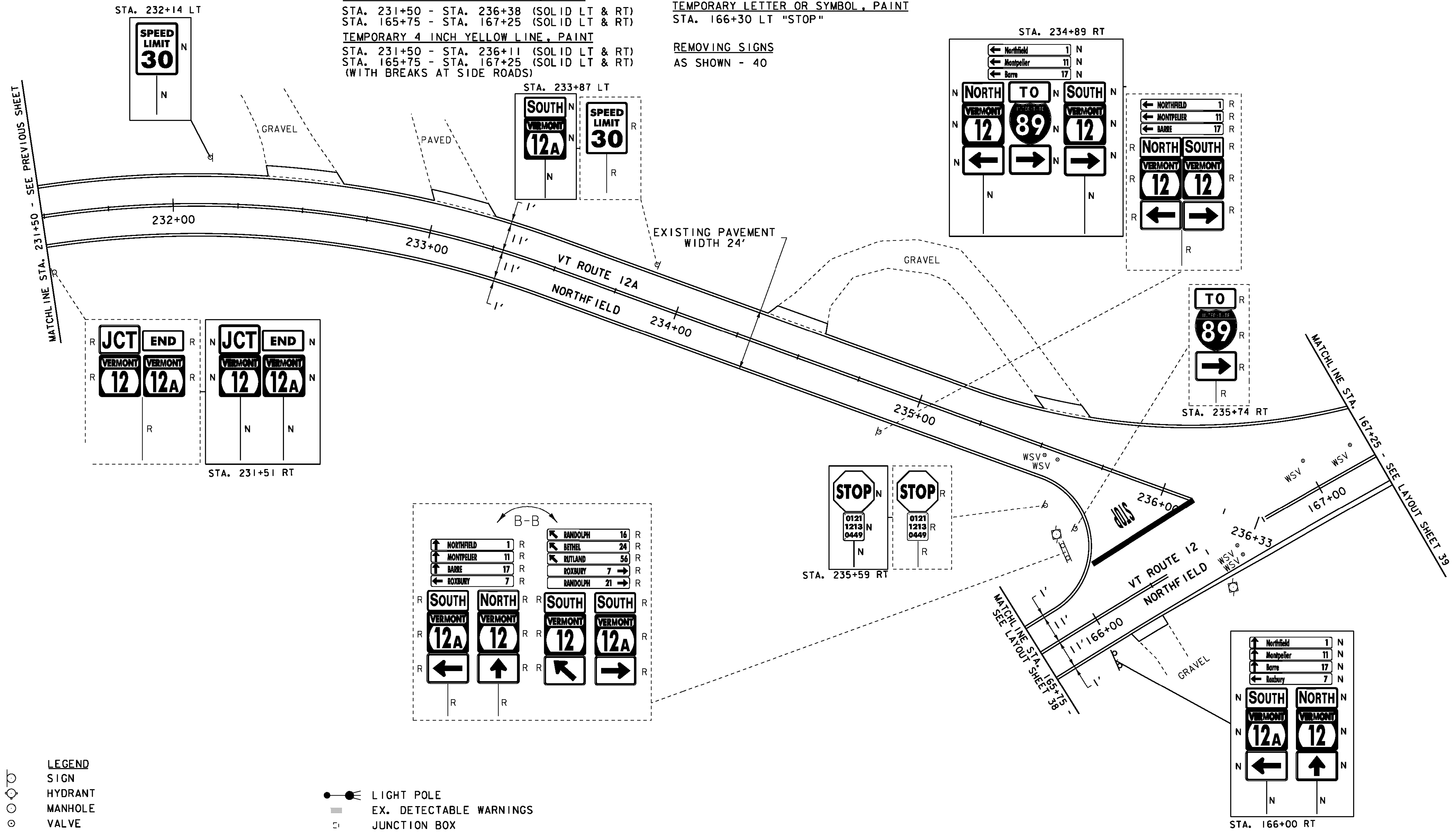
STA. 166+30 LT "STOP"

TEMPORARY LETTER OR SYMBOL, PAINT

STA. 166+30 LT "STOP"

REMOVING SIGNS

AS SHOWN - 40



- LEGEND**
- SIGN
 - HYDRANT
 - MANHOLE
 - VALVE
 - GAS PIPELINE MARKER
 - CATCH BASIN / DROP INLET
 - CURB INLET
 - TRAFFIC CONTROL BOX
 - PARKING METER
 - UTILITY POLE
 - PARKING METER

- LIGHT POLE
- EX. DETECTABLE WARNINGS
- JUNCTION BOX
- PED BUTTON
- ELECTRICAL BOX
- SIGNAL
- PEDESTAL POST
- STRAIN POLE
- CAMERA
- Vdz VIDEO DETECTION ZONE

- SIGN LEGEND**
- R = REMOVE
 - R&S = REMOVE AND SALVAGE
 - RET = RETAIN
 - S = SALVAGE
 - N = NEW
 - B-B = BACK TO BACK

NOT TO SCALE

PROJECT LAYOUT SHEET 37	PROJECT NAME: BETHEL-NORTHFIELD
	PROJECT NUMBER: STP 2922(I)
FILE NAME: piOC246.dgn	PLOT DATE: 1/3/13
PROJECT LEADER: CDL	DRAWN BY: JBG
DESIGNED BY: SJL	CHECKED BY: CDL
PLOT FILE: piOC246_56.1	SHEET 56 OF 149