

**REHAB. DROP INLETS, CATCH BASINS, OR MANHOLES, CLASS I OR CLASS II**  
 STA. 6+60 LT ✓  
 STA. 6+67 RT ✓  
 STA. 8+05 RT ✓  
 STA. 9+00 RT ✓

**CHANGING ELEVATION OF SEWER MANHOLES**  
 STA. 6+82 CL ✓ (LISTED AS 16+82 IN SITE MGR)  
 STA. 8+50 CL ✓  
 STA. 9+42 CL ✓  
**CHANGING ELEVATION OF DROP INLETS, CATCH BASINS, OR MANHOLES**  
 STA. 8+82 RT "DMH" LISTED AS 8+52 RT

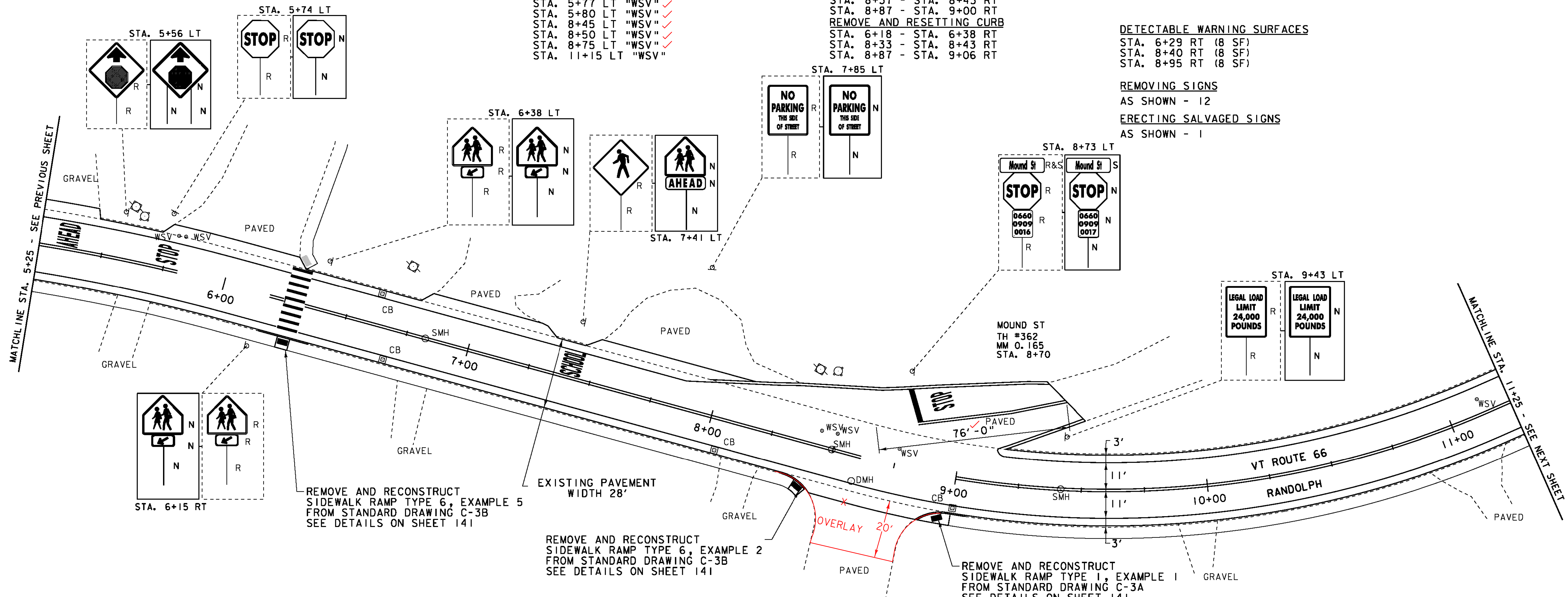
**ADJUST ELEVATION OF VALVE BOX**  
 STA. 5+77 LT "WSV" ✓  
 STA. 5+80 LT "WSV" ✓  
 STA. 8+45 LT "WSV" ✓  
 STA. 8+50 LT "WSV" ✓  
 STA. 8+75 LT "WSV" ✓  
 STA. 11+15 LT "WSV"

**COMMON EXCAVATION**  
 STA. 6+26 - STA. 6+31 RT  
 STA. 8+37 - STA. 8+43 RT  
 STA. 8+87 - STA. 9+00 RT  
**PORTLAND CEMENT CONCRETE SIDEWALK, 5 INCH**  
 STA. 6+26 - STA. 6+31 RT ✓  
 STA. 8+37 - STA. 8+43 RT ✓  
 STA. 8+87 - STA. 9+00 RT ✓  
**SUBBASE OF CRUSHED GRAVEL, FINE GRADED**  
 STA. 6+26 - STA. 6+31 RT  
 STA. 8+37 - STA. 8+43 RT  
 STA. 8+87 - STA. 9+00 RT  
**REMOVE AND RESETTING CURB**  
 STA. 6+18 - STA. 6+38 RT  
 STA. 8+33 - STA. 8+43 RT  
 STA. 8+87 - STA. 9+06 RT

**DETECTABLE WARNING SURFACES**  
 STA. 6+29 RT (8 SF)  
 STA. 8+40 RT (8 SF)  
 STA. 8+95 RT (8 SF)

**REMOVING SIGNS**  
 AS SHOWN - 12

**ERECTING SALVAGED SIGNS**  
 AS SHOWN - 1



REMOVE AND RECONSTRUCT SIDEWALK RAMP TYPE 6, EXAMPLE 5 FROM STANDARD DRAWING C-3B SEE DETAILS ON SHEET 141

REMOVE AND RECONSTRUCT SIDEWALK RAMP TYPE 6, EXAMPLE 2 FROM STANDARD DRAWING C-3B SEE DETAILS ON SHEET 141

REMOVE AND RECONSTRUCT SIDEWALK RAMP TYPE I, EXAMPLE I FROM STANDARD DRAWING C-3A SEE DETAILS ON SHEET 141

**DURABLE 4 INCH WHITE LINE, TYPE I TAPE**  
 STA. 5+25 - STA. 11+25 (SOLID LT & RT) (WITH BREAKS AT SIDEROADS & CROSSWALKS)  
 STA. 8+70 LT (EDGELINES TH #362)

**DURABLE 4 INCH YELLOW LINE, TYPE I TAPE**  
 STA. 5+25 - STA. 11+25 (SOLID LT & RT) (WITH BREAKS AT SIDEROADS & CROSSWALKS)  
 STA. 8+70 LT (CENTERLINE TH #362)

**DURABLE 24 INCH STOP BAR, TYPE I TAPE**  
 STA. 8+75 - STA. 8+81 LT

**TEMPORARY 24 INCH STOP BAR, PAINT**  
 STA. 8+75 - STA. 8+81 LT  
**DURABLE LETTER OR SYMBOL, TYPE I TAPE**  
 STA. 5+36 LT "AHEAD"  
 STA. 5+76 LT "STOP"  
 STA. 7+42 LT "SCHOOL"  
 STA. 8+88 LT "STOP"

**TEMPORARY 4 INCH WHITE LINE, PAINT**  
 STA. 5+25 - STA. 11+25 (SOLID LT & RT) (WITH BREAKS AT SIDEROADS & CROSSWALKS)  
 STA. 8+70 LT (EDGELINES TH #362)

**TEMPORARY 4 INCH YELLOW LINE, PAINT**  
 STA. 5+25 - STA. 11+25 (SOLID LT & RT) (WITH BREAKS AT SIDEROADS & CROSSWALKS)  
 STA. 8+70 LT (CENTERLINE TH #362)

**DURABLE CROSSWALK MARKING, TYPE I TAPE**  
 STA. 6+29 LT & RT

**TEMPORARY CROSSWALK MARKING, PAINT**  
 STA. 6+29 LT & RT

**LEGEND**

- |   |                          |   |                         |
|---|--------------------------|---|-------------------------|
| ○ | SIGN                     | ● | LIGHT POLE              |
| ○ | HYDRANT                  | ■ | EX. DETECTABLE WARNINGS |
| ○ | MANHOLE                  | □ | JUNCTION BOX            |
| ○ | VALVE                    | □ | PED BUTTON              |
| ○ | GAS PIPELINE MARKER      | □ | ELECTRICAL BOX          |
| □ | CATCH BASIN / DROP INLET | □ | SIGNAL                  |
| □ | CURB INLET               | □ | PEDESTAL POST           |
| □ | TRAFFIC CONTROL BOX      | □ | STRAIN POLE             |
| □ | PARKING METER            | □ | CAMERA                  |
| □ | UTILITY POLE             | □ | VIDEO DETECTION ZONE    |
| ■ | DETECTABLE WARNINGS      |   |                         |

**SIGN LEGEND**

- R = REMOVE  
 R&S = REMOVE AND SALVAGE  
 RET = RETAIN  
 S = SALVAGE  
 N = NEW  
 B-B = BACK TO BACK

**TEMPORARY LETTER OR SYMBOL, PAINT**  
 STA. 5+36 LT "AHEAD"  
 STA. 5+76 LT "STOP"  
 STA. 7+42 LT "SCHOOL"  
 STA. 8+88 LT "STOP"

**NOT TO SCALE**

**PROJECT LAYOUT SHEET 31**

PROJECT NAME: BETHEL-NORTHFIELD  
 PROJECT NUMBER: STP 2922(I)

FILE NAME: piOC246.dgn  
 PROJECT LEADER: CDL  
 DESIGNED BY: SJL  
 PLOT FILE: piOC246\_50.I

PLOT DATE: 1/3/13  
 DRAWN BY: JBG  
 CHECKED BY: CDL  
 SHEET 50 OF 149