

REHAB. DROP INLETS, CATCH BASINS, OR MANHOLES, CLASS I OR CLASS II

STA. 133+94 LT ✓
 STA. 133+95 RT ✓ NOT DONE PER R.E.
 STA. 134+75 LT ✓
 STA. 135+25 LT ✓
 STA. 135+96 LT ✓

CHANGING ELEVATION OF SEWER MANHOLES

STA. 134+75 RT ✓
 STA. 0+78 CL ✓

REMOVING SIGNS
 AS SHOWN - 27

SALVAGED SIGNS
 AS SHOWN - 1

COMMON EXCAVATION
 STA. 135+25 - STA. 135+31 RT ✓
 STA. 135+30 - STA. 135+40 LT ✓

PORTLAND CEMENT CONCRETE SIDEWALK, 5 INCH
 STA. 135+25 - STA. 135+31 RT ✓
 STA. 135+30 - STA. 135+40 LT ✓

SUBBASE OF CRUSHED GRAVEL, FINE GRADED
 STA. 135+25 - STA. 135+31 RT ✓
 STA. 135+30 - STA. 135+40 LT ✓

CAST-IN-PLACE CONCRETE CURB, TYPE B
 STA. 135+20 - STA. 135+37 RT ✓
 STA. 135+24 - STA. 135+49 LT ✓

REMOVAL OF EXISTING CURB
 STA. 135+20 - STA. 135+37 RT ✓
 STA. 135+24 - STA. 135+49 LT ✓

DETECTABLE WARNING SURFACES
 STA. 135+28 RT (8 SF) ✓
 STA. 135+36 LT (8 SF) ✓ LISTED AS 135+63 IN SITE MGR.

TEMPORARY 4 INCH WHITE LINE, PAINT
 STA. 130+50 - STA. 136+25 (SOLID LT & RT) (WITH BREAKS AT SIDEROADS)
 STA. 134+95 LT (EDGELINES TH #318)
 STA. 0+75 - STA. 1+50 (SOLID LT & RT)

TEMPORARY 4 INCH YELLOW LINE, PAINT
 STA. 130+50 - STA. 136+25 (SOLID LT & RT) (WITH BREAKS AT SIDEROADS)
 STA. 134+95 LT (CENTERLINE TH #318)
 STA. 0+75 - STA. 1+50 (SOLID LT & RT)

DURABLE 4 INCH WHITE LINE, TYPE I TAPE
 STA. 130+50 - STA. 136+25 (SOLID LT & RT) (WITH BREAKS AT SIDEROADS)
 STA. 134+95 LT (EDGELINES TH #318)
 STA. 0+75 - STA. 1+50 (SOLID LT & RT)

DURABLE 4 INCH YELLOW LINE, TYPE I TAPE
 STA. 130+50 - STA. 136+25 (SOLID LT & RT) (WITH BREAKS AT SIDEROADS)
 STA. 134+95 LT (CENTERLINE TH #318)
 STA. 0+75 - STA. 1+50 (SOLID LT & RT)

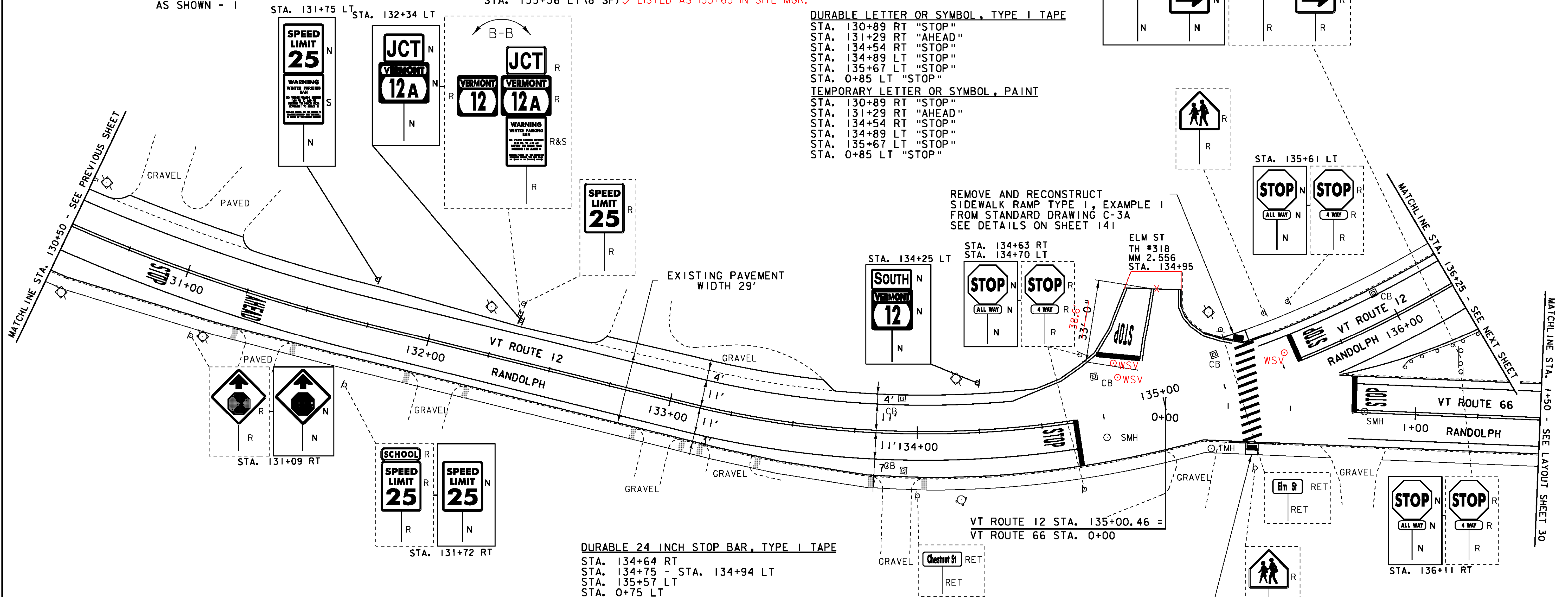
DURABLE LETTER OR SYMBOL, TYPE I TAPE

STA. 130+89 RT "STOP"
 STA. 131+29 RT "AHEAD"
 STA. 134+54 RT "STOP"
 STA. 134+89 LT "STOP"
 STA. 135+67 LT "STOP"
 STA. 0+85 LT "STOP"

TEMPORARY LETTER OR SYMBOL, PAINT

STA. 130+89 RT "STOP"
 STA. 131+29 RT "AHEAD"
 STA. 134+54 RT "STOP"
 STA. 134+89 LT "STOP"
 STA. 135+67 LT "STOP"
 STA. 0+85 LT "STOP"

ADJUST ELEVATION OF VALVE BOX
 STA. 134+80 LT "WSV" (NOT ON PLANS)
 STA. 134+82 LT "WSV" (NOT ON PLANS)
 STA. 135+53 LT "WSV" (NOT ON PLANS)



LEGEND

- | | | | |
|---|--------------------------|---|-------------------------|
| ○ | SIGN | ● | LIGHT POLE |
| ○ | HYDRANT | ■ | EX. DETECTABLE WARNINGS |
| ○ | MANHOLE | □ | JUNCTION BOX |
| ○ | VALVE | □ | PED BUTTON |
| ○ | GAS PIPELINE MARKER | □ | ELECTRICAL BOX |
| □ | CATCH BASIN / DROP INLET | □ | SIGNAL |
| □ | CURB INLET | □ | PEDESTAL POST |
| □ | TRAFFIC CONTROL BOX | □ | STRAIN POLE |
| □ | PARKING METER | □ | CAMERA |
| □ | UTILITY POLE | □ | VIDEO DETECTION ZONE |
| ■ | DETECTABLE WARNINGS | | |

SIGN LEGEND

- R = REMOVE
 R&S = REMOVE AND SALVAGE
 RET = RETAIN
 S = SALVAGE
 N = NEW
 B-B = BACK TO BACK

DURABLE 24 INCH STOP BAR, TYPE I TAPE

STA. 134+64 RT
 STA. 134+75 - STA. 134+94 LT
 STA. 135+57 LT
 STA. 0+75 LT

TEMPORARY 24 INCH STOP BAR, PAINT

STA. 134+64 RT
 STA. 134+75 - STA. 134+94 LT
 STA. 135+57 LT
 STA. 0+75 LT

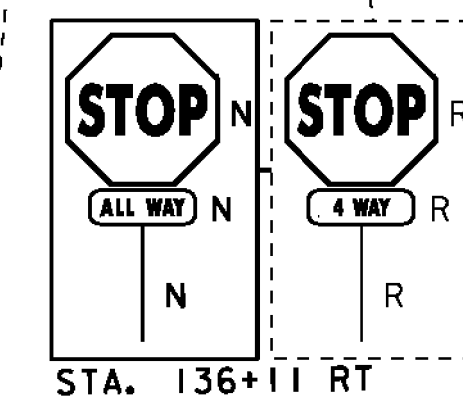
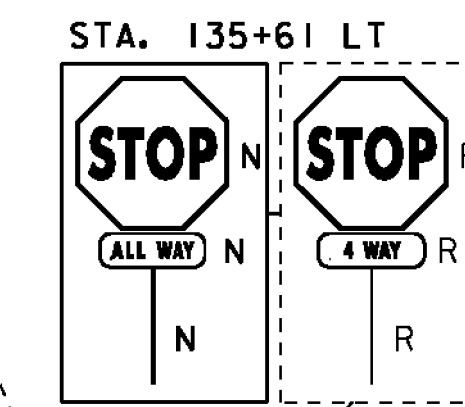
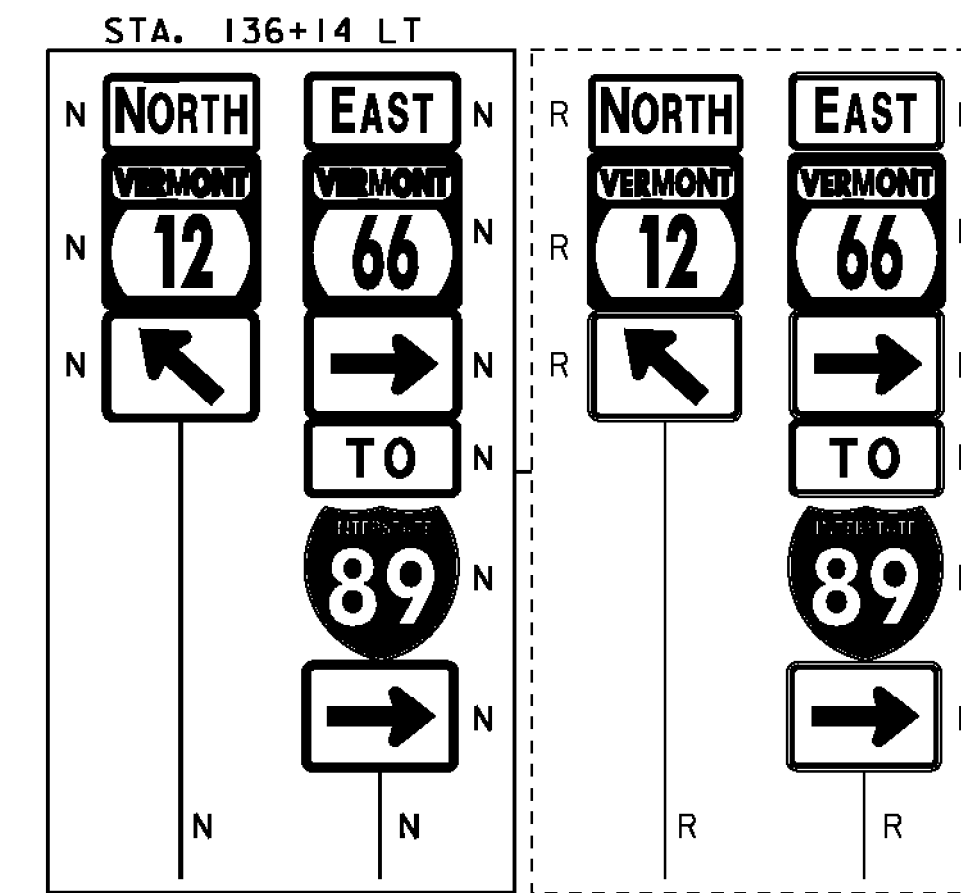
DURABLE CROSSWALK MARKING, TYPE I TAPE

STA. 135+29 RT - STA. 135+38 LT
 TEMPORARY CROSSWALK MARKING, PAINT
 STA. 135+29 RT - STA. 135+38 LT

REMOVE AND RECONSTRUCT SIDEWALK RAMP TYPE 1, EXAMPLE 1 FROM STANDARD DRAWING C-3A SEE DETAILS ON SHEET 141

ELM ST TH #318 MM 2-556 STA. 134+95

REMOVE AND RECONSTRUCT SIDEWALK RAMP TYPE 6, EXAMPLE 5 FROM STANDARD DRAWING C-3B SEE DETAILS ON SHEET 141



NOT TO SCALE

PROJECT LAYOUT SHEET 20

PROJECT NAME: BETHEL-NORTHFIELD
 PROJECT NUMBER: STP 2922(I)

FILE NAME: piOC246.dgn
 PROJECT LEADER: CDL
 DESIGNED BY: SJL
 PLOT FILE: piOC246_39.1

PLOT DATE: 1/3/13
 DRAWN BY: JBG
 CHECKED BY: CDL
 SHEET 39 OF 149