

REHAB. DROP INLETS, CATCH BASINS, OR MANHOLES, CLASS I OR CLASS II
 STA. 84+86 RT ✓
 STA. 90+69 RT ✓

ADJUST ELEVATION OF VALVE BOX
 STA. 88+23 LT "WSV" ✓
 STA. 88+25 LT "WSV" ✓

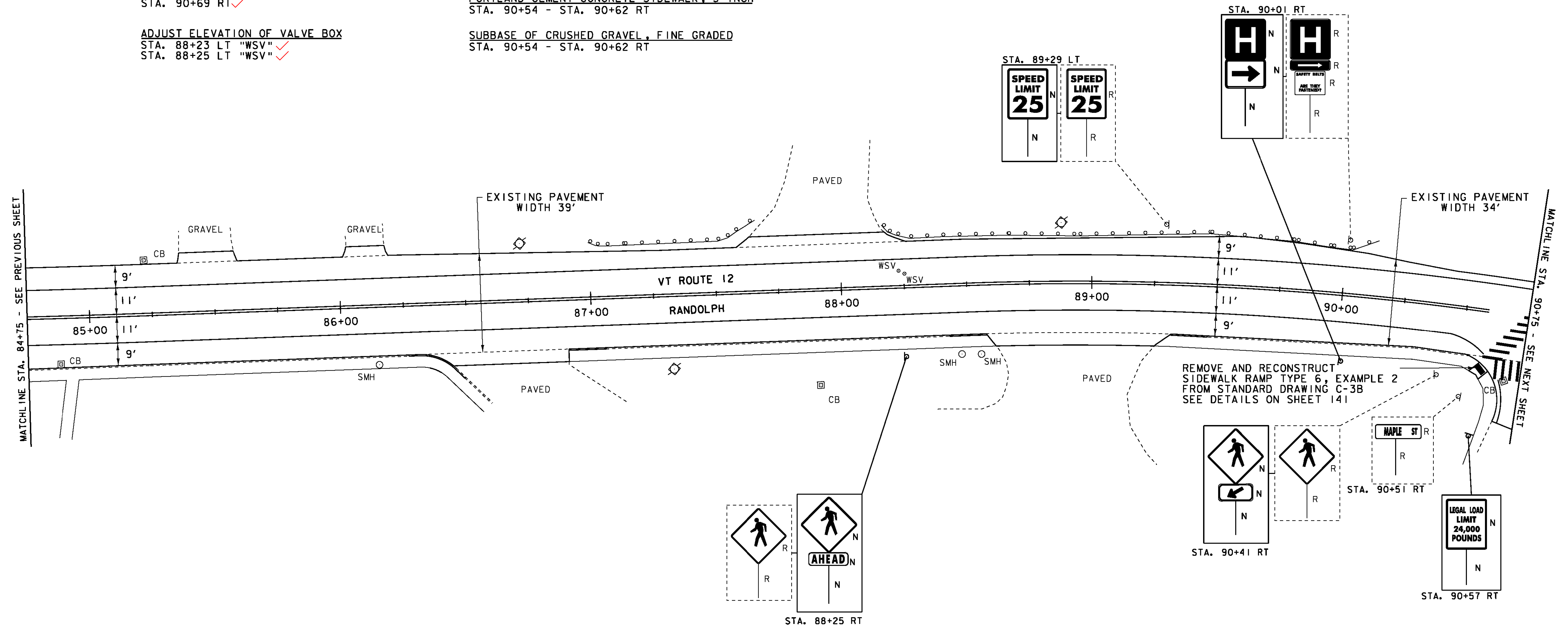
COMMON EXCAVATION
 STA. 90+54 - STA. 90+62 RT

PORTLAND CEMENT CONCRETE SIDEWALK, 5 INCH
 STA. 90+54 - STA. 90+62 RT

SUBBASE OF CRUSHED GRAVEL, FINE GRADED
 STA. 90+54 - STA. 90+62 RT

DETECTABLE WARNING SURFACES
 STA. 90+59 RT (8 SF) ✓
 (IN SITE MANAGER AS STA. 90+57)

REMOVING SIGNS
 AS SHOWN - 7



DURABLE 4 INCH WHITE LINE, TYPE I TAPE
 STA. 84+75 - STA. 90+75 (SOLID LT & RT)
 (WITH BREAKS AT SIDEROADS & CROSSWALKS)

DURABLE 4 INCH YELLOW LINE, TYPE I TAPE
 STA. 84+75 - STA. 90+75 (SOLID LT & RT)
 (WITH BREAKS AT SIDEROADS & CROSSWALKS)

DURABLE CROSSWALK MARKING, TYPE I TAPE
 STA. 90+64 RT - STA. 90+75 RT
 STA. 90+64 RT - STA. 90+75 RT

TEMPORARY 4 INCH WHITE LINE, PAINT
 STA. 84+75 - STA. 90+75 (SOLID LT & RT)
 (WITH BREAKS AT SIDEROADS & CROSSWALKS)

TEMPORARY 4 INCH YELLOW LINE, PAINT
 STA. 84+75 - STA. 90+75 (SOLID LT & RT)
 (WITH BREAKS AT SIDEROADS & CROSSWALKS)

TEMPORARY CROSSWALK MARKING, PAINT
 STA. 90+64 RT - STA. 90+75 RT
 STA. 90+64 RT - STA. 90+75 RT

- LEGEND**
- SIGN
 - HYDRANT
 - MANHOLE
 - VALVE
 - GAS PIPELINE MARKER
 - CATCH BASIN / DROP INLET
 - CURB INLET
 - TRAFFIC CONTROL BOX
 - PARKING METER
 - UTILITY POLE
 - DETECTABLE WARNINGS

- LIGHT POLE
- EX. DETECTABLE WARNINGS
- JUNCTION BOX
- PED BUTTON
- ELECTRICAL BOX
- SIGNAL
- PEDESTAL POST
- STRAIN POLE
- CAMERA
- V D Z VIDEO DETECTION ZONE

- SIGN LEGEND**
- R = REMOVE
 - R&S = REMOVE AND SALVAGE
 - RET = RETAIN
 - S = SALVAGE
 - N = NEW
 - B-B = BACK TO BACK

NOT TO SCALE

PROJECT LAYOUT SHEET 12

PROJECT NAME: BETHEL-NORTHFIELD
 PROJECT NUMBER: STP 2922(I)

FILE NAME: piOC246.dgn
 PROJECT LEADER: CDL
 DESIGNED BY: SJL
 PLOT FILE: piOC246_31.i

PLOT DATE: 1/3/13
 DRAWN BY: JBG
 CHECKED BY: CDL
 SHEET 31 OF 149