

REHAB, DROP INLETS, CATCH BASINS, OR MANHOLES, CLASS I OR CLASS II
 STA. 117+56 LT ✓

ADJUST ELEVATION OF VALVE BOX
 STA. 116+68 RT "WSV"
 STA. 117+22 RT "WSV"
 STA. 118+61 RT "WSV"
 STA. 119+22 RT "WSV"
 STA. 119+52 RT "WSV"
 STA. 120+98 RT "WSV"

CHANGING ELEVATION OF SEWER MANHOLES
 STA. 118+00 LT } NOT LOCATED
 STA. 120+35 LT }
 STA. 121+02 LT }

DURABLE 4 INCH WHITE LINE, TYPE I TAPE
 STA. 116+25 - STA. 121+50 (SOLID LT & RT)

DURABLE 4 INCH YELLOW LINE, TYPE I TAPE
 STA. 116+25 - STA. 121+50 (SOLID LT & RT)

DURABLE CROSSWALK MARKING, TYPE I TAPE
 STA. 118+35 LT & RT

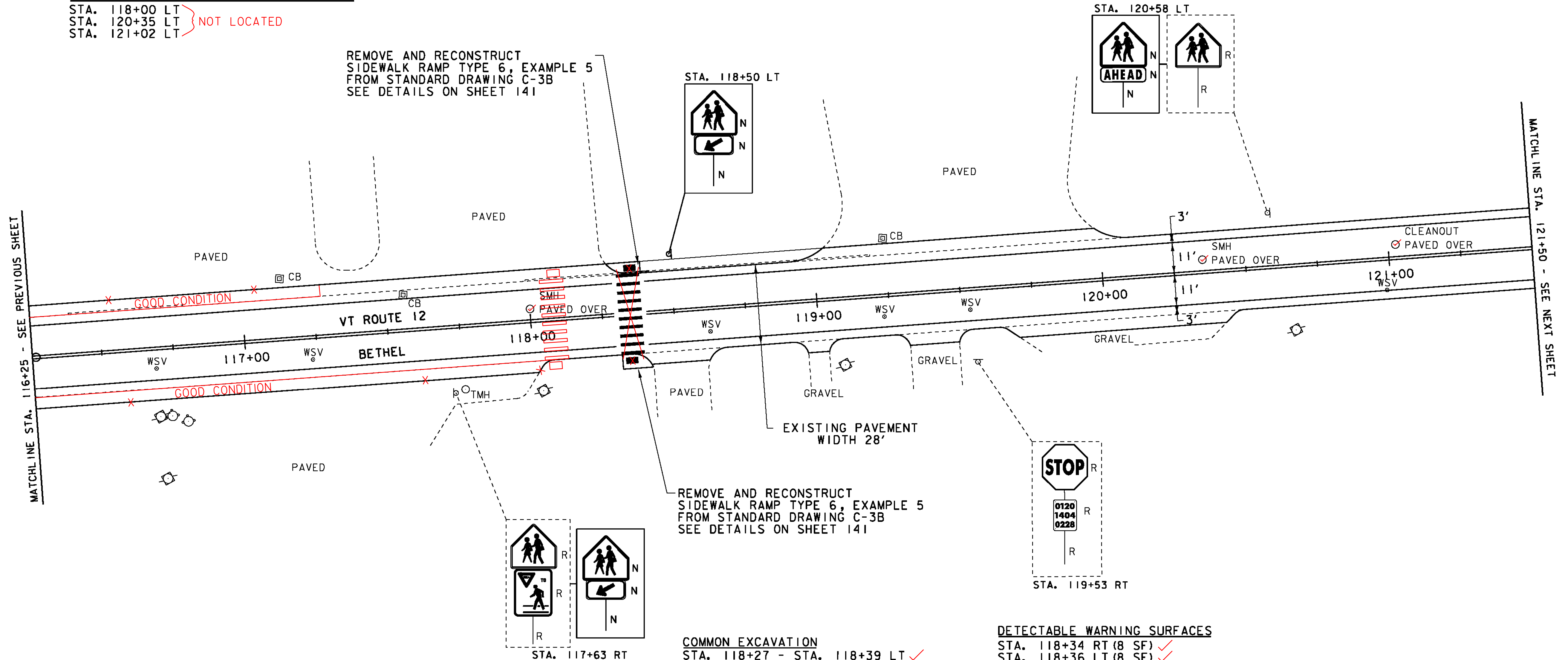
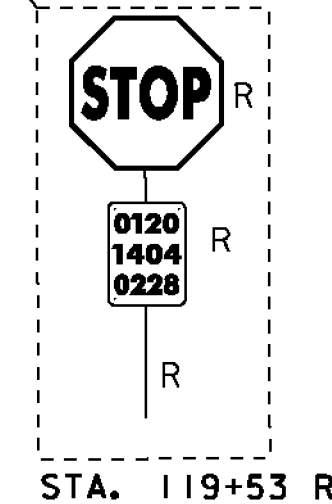
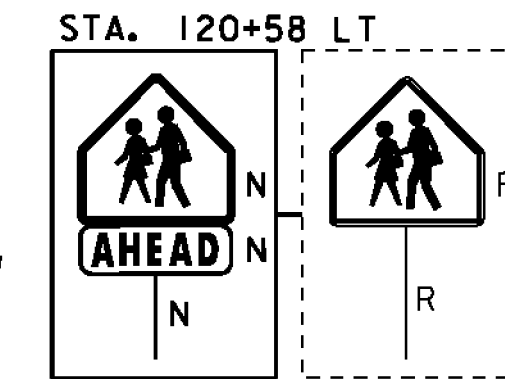
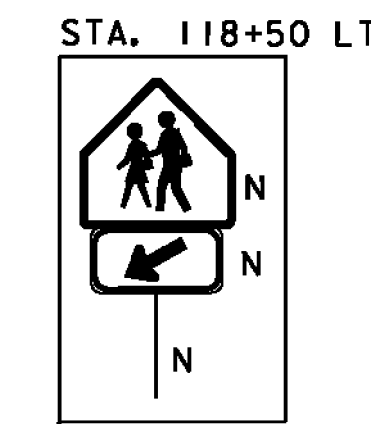
TEMPORARY 4 INCH WHITE LINE, PAINT
 STA. 116+25 - STA. 121+50 (SOLID LT & RT)

TEMPORARY 4 INCH YELLOW LINE, PAINT
 STA. 116+25 - STA. 121+50 (SOLID LT & RT)

TEMPORARY CROSSWALK MARKING, PAINT
 STA. 118+35 LT & RT

REMOVING SIGNS
 AS SHOWN - 5

REMOVE AND RECONSTRUCT SIDEWALK RAMP TYPE 6, EXAMPLE 5 FROM STANDARD DRAWING C-3B SEE DETAILS ON SHEET 141



REMOVE AND RECONSTRUCT SIDEWALK RAMP TYPE 6, EXAMPLE 5 FROM STANDARD DRAWING C-3B SEE DETAILS ON SHEET 141

COMMON EXCAVATION
 STA. 118+27 - STA. 118+39 LT ✓
 STA. 118+31 - STA. 118+41 RT ✓

DETECTABLE WARNING SURFACES
 STA. 118+34 RT (8 SF) ✓
 STA. 118+36 LT (8 SF) ✓

PORTLAND CEMENT CONCRETE SIDEWALK, 5 INCH
 STA. 118+27 - STA. 118+39 LT
 STA. 118+31 - STA. 118+41 RT

SUBBASE OF CRUSHED GRAVEL, FINE GRADED
 STA. 118+27 - STA. 118+39 LT
 STA. 118+31 - STA. 118+41 RT

REMOVE AND RESET CURB
 STA. 118+32 - STA. 118+42 LT

LEGEND

- SIGN
- HYDRANT
- MANHOLE
- VALVE
- GAS PIPELINE MARKER
- CATCH BASIN / DROP INLET
- CURB INLET
- ⊠ TRAFFIC CONTROL BOX
- ⊠ PARKING METER
- ⊠ UTILITY POLE
- DETECTABLE WARNINGS
- LIGHT POLE
- ▨ EX. DETECTABLE WARNINGS
- JUNCTION BOX
- ⊠ PED BUTTON
- ⊠ ELECTRICAL BOX
- ⊠ SIGNAL
- ⊠ PEDESTAL POST
- ⊠ STRAIN POLE
- CAMERA
- VDZ VIDEO DETECTION ZONE

SIGN LEGEND

- R = REMOVE
- R&S = REMOVE AND SALVAGE
- RET = RETAIN
- S = SALVAGE
- N = NEW
- B-B = BACK TO BACK

NOT TO SCALE

PROJECT LAYOUT SHEET 8

PROJECT NAME: BETHEL-NORTHFIELD
 PROJECT NUMBER: STP 2922(I)

FILE NAME: piOC246.dgn
 PROJECT LEADER: CDL
 DESIGNED BY: SJL
 PLOT FILE: piOC246_27.I

PLOT DATE: 1/3/13
 DRAWN BY: JBG
 CHECKED BY: CDL
 SHEET 27 OF 149