

REHAB, DROP INLETS, CATCH
BASINS, OR MANHOLES, CLASS I OR CLASS II
STA. 111+76 LT ✓
STA. 113+56 LT ✓

CHANGING ELEVATION OF SEWER MANHOLES
STA. 111+08 LT (CLEAN OUT) NOTHING DONE
STA. 112+41 LT ✓ PER VILLAGE
STA. 114+87 LT ✓ PLANT OPERATOR

DURABLE 4 INCH WHITE LINE, TYPE I TAPE
STA. 110+50 - STA. 116+25 (SOLID LT & RT)

DURABLE 4 INCH YELLOW LINE, TYPE I TAPE
STA. 110+50 - STA. 116+25 (SOLID LT & RT)

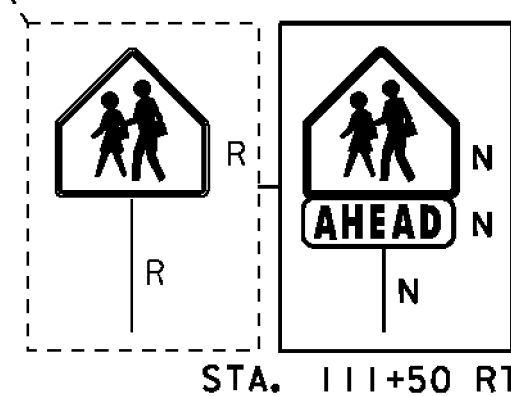
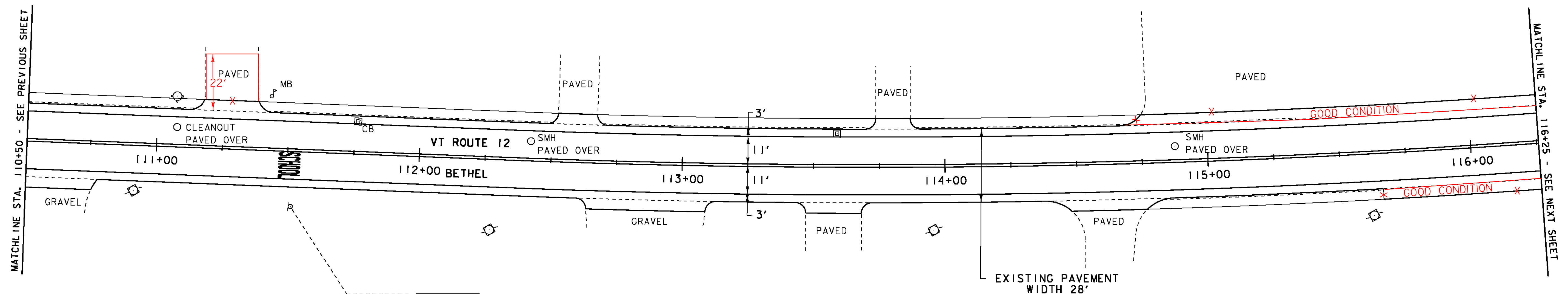
DURABLE LETTER OR SYMBOL, TYPE I TAPE
STA. 111+50 RT "SCHOOL"

REMOVING SIGNS
AS SHOWN - I

TEMPORARY 4 INCH WHITE LINE, PAINT
STA. 110+50 - STA. 116+25 (SOLID LT & RT)

TEMPORARY 4 INCH YELLOW LINE, PAINT
STA. 110+50 - STA. 116+25 (SOLID LT & RT)

TEMPORARY LETTER OR SYMBOL, PAINT
STA. 111+50 RT "SCHOOL"



LEGEND

- SIGN
- ⊙ HYDRANT
- MANHOLE
- VALVE
- GAS PIPELINE MARKER
- ⊠ CATCH BASIN / DROP INLET
- CURB INLET
- ⊠ TRAFFIC CONTROL BOX
- ⊠ PARKING METER
- ⊠ UTILITY POLE
- LIGHT POLE
- ▨ EX. DETECTABLE WARNINGS
- ⊠ JUNCTION BOX
- ⊠ PED BUTTON
- ⊠ ELECTRICAL BOX
- ⊠ SIGNAL
- ⊠ PEDESTAL POST
- DETECTABLE WARNINGS

SIGN LEGEND

- R = REMOVE
- R&S = REMOVE AND SALVAGE
- RET = RETAIN
- S = SALVAGE
- N = NEW
- B-B = BACK TO BACK

PROJECT LAYOUT SHEET 7

PROJECT NAME: BETHEL-NORTHFIELD
PROJECT NUMBER: STP 2922(I)

FILE NAME: p10C246.dgn
PROJECT LEADER: CDL
DESIGNED BY: SJL
PLOT FILE: p10C246_26.1

PLOT DATE: 1/3/13
DRAWN BY: JBG
CHECKED BY: CDL
SHEET 26 OF 149