

REHAB, DROP INLETS, CATCH BASINS, OR MANHOLES, CLASS I OR CLASS II
 STA. 95+32 LT ✓
 STA. 95+32 RT ✓
 STA. 97+00 LT ✓
 STA. 97+32 RT NO RECONSTRUCTION DONE IN THIS AREA

CHANGING ELEVATION OF SEWER MANHOLES
 STA. 97+30 CL ✓
 STA. 97+37 RT NO RECONSTRUCTION DONE IN THIS AREA
 STA. 98+92 LT ✓

COMMON EXCAVATION
 STA. 98+29 - STA. 98+38 RT

PORTLAND CEMENT CONCRETE SIDEWALK, 5 INCH
 STA. 98+29 - STA. 98+38 RT

SUBBASE OF CRUSHED GRAVEL, FINE GRADED
 STA. 98+29 - STA. 98+38 RT ✓

DETECTABLE WARNING SURFACES
 STA. 98+33 RT (8 SF) ✓

DURABLE 4 INCH WHITE LINE, TYPE I TAPE
 STA. 94+25 - STA. 99+75 (SOLID LT & RT)
 (WITH EDGELINE BREAKS AT SIDEROADS & CROSSWALKS)

DURABLE 4 INCH YELLOW LINE, TYPE I TAPE
 STA. 94+25 - STA. 99+75 (SOLID LT & RT)
 (WITH CENTERLINE BREAKS AT SIDEROADS & CROSSWALKS)

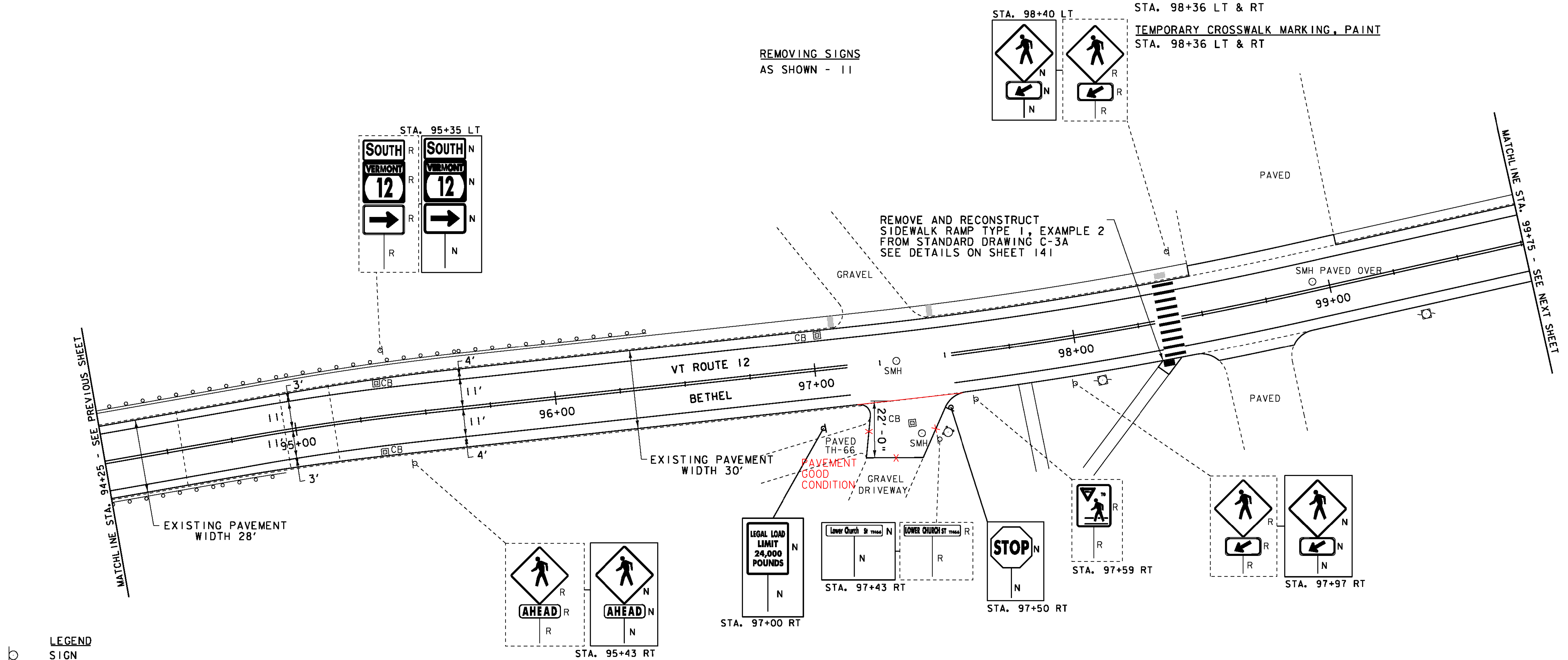
TEMPORARY 4 INCH WHITE LINE, PAINT
 STA. 94+25 - STA. 99+75 (SOLID LT & RT)
 (WITH EDGELINE BREAKS AT SIDEROADS & CROSSWALKS)

TEMPORARY 4 INCH YELLOW LINE, PAINT
 STA. 94+25 - STA. 99+75 (SOLID LT & RT)
 (WITH CENTERLINE BREAKS AT SIDEROADS & CROSSWALKS)

DURABLE CROSSWALK MARKING, TYPE I TAPE
 STA. 98+36 LT & RT

TEMPORARY CROSSWALK MARKING, PAINT
 STA. 98+36 LT & RT

REMOVING SIGNS
 AS SHOWN - 11



- LEGEND**
- SIGN
 - HYDRANT
 - MANHOLE
 - VALVE
 - GAS PIPELINE MARKER
 - CATCH BASIN / DROP INLET
 - CURB INLET
 - ⊠ TRAFFIC CONTROL BOX
 - ⊠ PARKING METER
 - ⊠ UTILITY POLE
 - DETECTABLE WARNINGS
 - LIGHT POLE
 - ▨ EX. DETECTABLE WARNINGS
 - JUNCTION BOX
 - ⊠ PED BUTTON
 - ⊠ ELECTRICAL BOX
 - ⊠ SIGNAL
 - ⊠ PEDESTAL POST
 - ⊠ STRAIN POLE
 - CAMERA
 - VDZ VIDEO DETECTION ZONE

- SIGN LEGEND**
- R = REMOVE
 - R&S = REMOVE AND SALVAGE
 - RET = RETAIN
 - S = SALVAGE
 - N = NEW
 - B-B = BACK TO BACK

PROJECT LAYOUT SHEET 4	PROJECT NAME: BETHEL-NORTHFIELD	PLOT DATE: 1/3/13
	PROJECT NUMBER: STP 2922(I)	DRAWN BY: JBG
	FILE NAME: pIOC246.dgn	DESIGNED BY: SJL
	PLOT FILE: pIOC246_23.1	SHEET 23 OF 149

NOT TO SCALE