

REHAB, DROP INLETS, CATCH BASINS, OR MANHOLES, CLASS I OR CLASS II

- STA. 77+20 RT ✓
- STA. 77+72 RT ✓
- STA. 79+33 RT ✓
- STA. 80+47 LT ✓
- STA. 81+59 RT ✓

CHANGING ELEVATION OF SEWER MANHOLES

- STA. 77+45 LT ✓
- STA. 79+16 LT ✓
- STA. 80+46 RT ✓

ADJUST ELEVATION OF VALVE BOX

- STA. 78+94 RT "WSV"

COMMON EXCAVATION

- STA. 80+07 - STA. 80+34 LT
- STA. 80+29 - STA. 80+35 RT

PORTLAND CEMENT CONCRETE SIDEWALK, 5 INCH

- STA. 80+07 - STA. 80+34 LT STA 81+2 - STA 81+7 RT
- STA. 80+29 - STA. 80+35 RT STA 81+33 - STA 81+37 LT

SUBBASE OF CRUSHED GRAVEL, FINE GRADED

- STA. 80+07 - STA. 80+34 LT
- STA. 80+29 - STA. 80+35 RT

REMOVING AND RESETTING CURB

- STA. 80+20 - STA. 80+45 RT

VERTICAL GRANITE CURB

- STA. 80+07 - STA. 80+34 LT

DETECTABLE WARNING SURFACE

- STA. 80+32 LT (8 SF)
- STA. 80+32 RT (8 SF)
- STA 81+5 RT (8 SF)
- STA 81+35 RT (8 SF)

DURABLE 4 INCH WHITE LINE, TYPE I TAPE

- STA. 76+07 - STA. 81+75 (SOLID LT & RT)

DURABLE 4 INCH YELLOW LINE, TYPE I TAPE

- STA. 76+07 - STA. 81+75 (SOLID LT & RT)

TEMPORARY 4 INCH WHITE LINE, PAINT

- STA. 76+07 - STA. 81+75 (SOLID LT & RT)

TEMPORARY 4 INCH YELLOW LINE, PAINT

- STA. 76+07 - STA. 81+75 (SOLID LT & RT)

900.640 SPECIAL PROVISION (DURABLE CROSSWALK MARKING, IMPRINTED/COLORIZED)

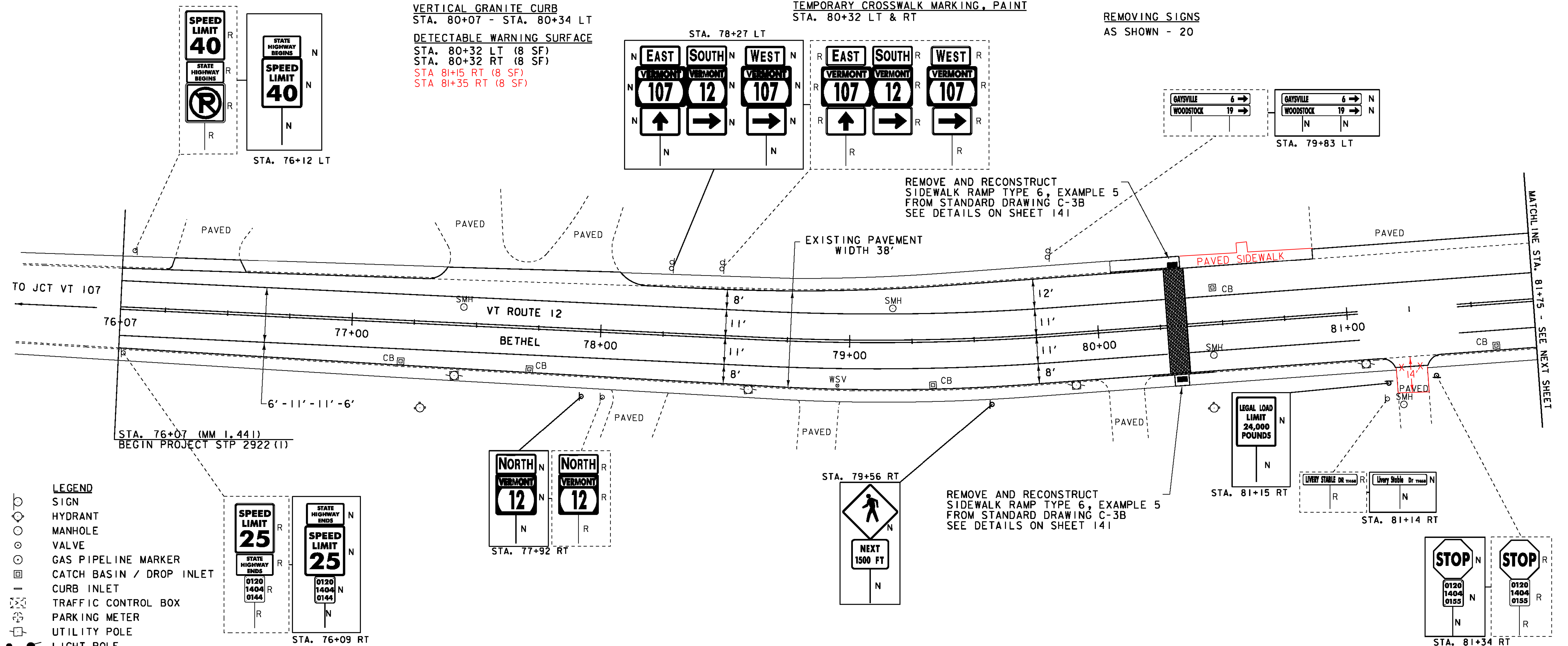
- STA. 80+32 LT & RT

TEMPORARY CROSSWALK MARKING, PAINT

- STA. 80+32 LT & RT

REMOVING SIGNS

AS SHOWN - 20



- LEGEND**
- SIGN
 - HYDRANT
 - MANHOLE
 - VALVE
 - GAS PIPELINE MARKER
 - CATCH BASIN / DROP INLET
 - CURB INLET
 - TRAFFIC CONTROL BOX
 - PARKING METER
 - UTILITY POLE
 - LIGHT POLE
 - ▨ EX. DETECTABLE WARNINGS
 - JUNCTION BOX
 - PED BUTTON
 - ELECTRICAL BOX
 - SIGNAL
 - PEDESTAL POST
 - DETECTABLE WARNINGS
- SIGN LEGEND**
- R = REMOVE
 - R&S = REMOVE AND SALVAGE
 - RET = RETAIN
 - S = SALVAGE
 - N = NEW
 - B-B = BACK TO BACK

PROJECT LAYOUT SHEET 1	PROJECT NAME: BETHEL-NORTHFIELD
	PROJECT NUMBER: STP 2922(I)
	FILE NAME: piOC246.dgn
	PLOT DATE: 1/3/13
DESIGNED BY: SJL	DRAWN BY: JBG
CHECKED BY: CDL	SHEET 20 OF 149
PLOT FILE: piOC246_20.1	

NOT TO SCALE