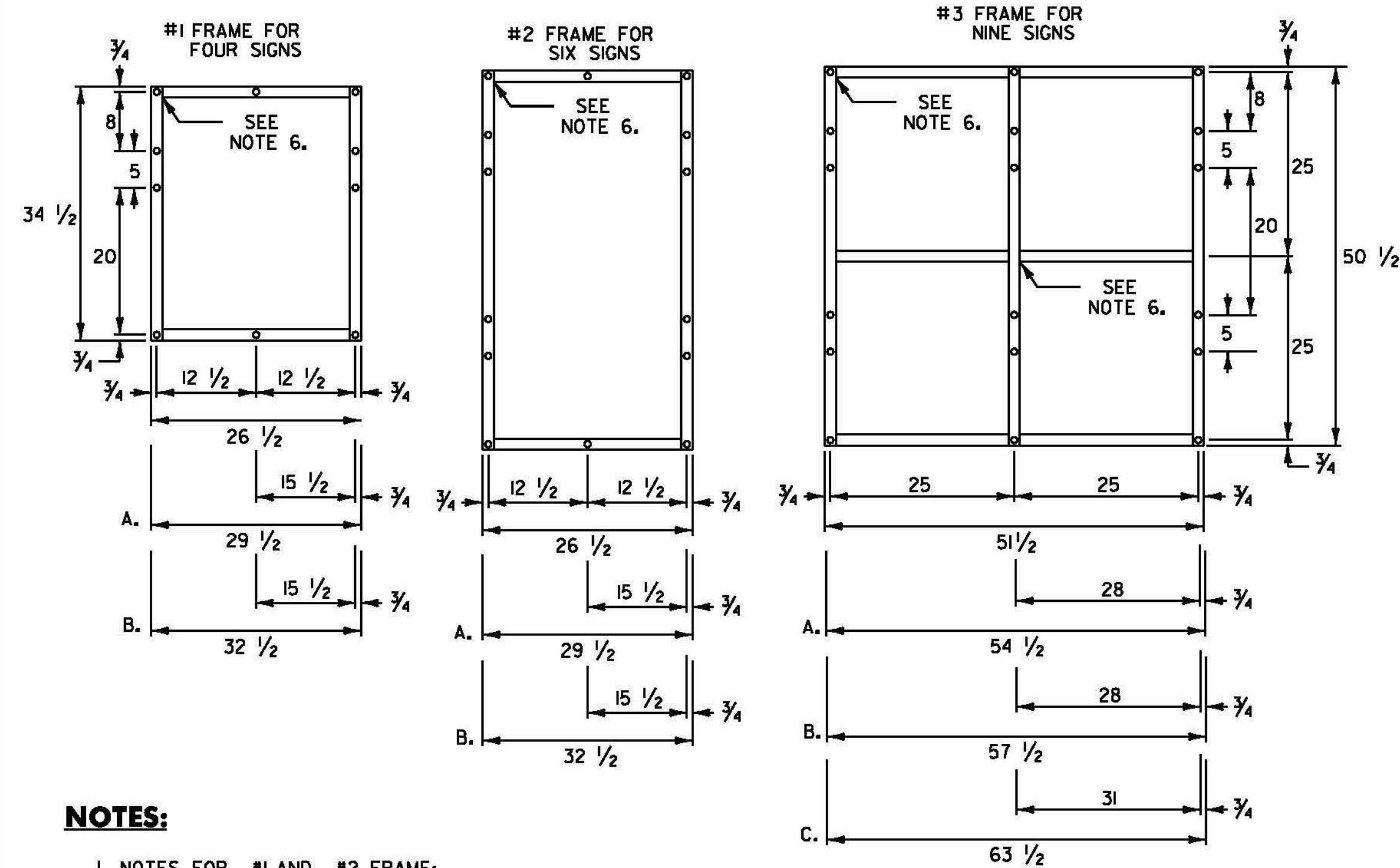


1.) THE DESTINATION SIGN SHOWN ON THIS SHEET SHALL HAVE WHITE RETROREFLECTIVE ASTM TYPE III OR IV TEXT, ARROWS AND BORDERS ON A GREEN RETROREFLECTIVE ASTM D 4956 TYPE III OR IV BACKGROUND.

2.) USE THE LARGEST LETTER / THICKEST FONT AVAILABLE THAT WILL SATISFY THE MINIMUM SPACING REQUIREMENTS, AS SHOWN IN THE DETAILS ABOVE; I.E. IF A 6" SERIES C LETTER DOES NOT WORK, DUE TO THE LENGTH OF THE WORD, USE A 6" SERIES B LETTER. IF A 6" SERIES B LETTER DOES NOT WORK, USE A 5" SERIES C. IF A 5" SERIES C LETTER DOES NOT WORK, USE A 5" SERIES B. USE NO LESS THAN 80% KERNING.

ROUTE MARKER ASSEMBLY FRAMES



NOTES:

1. NOTES FOR #1 AND #2 FRAME:

- A. WITH ONE 30 INCH THREE DIGIT SIGN
- B. WITH TWO 30 INCH THREE DIGIT SIGNS

2. NOTES FOR #3 FRAME:

- A. WITH ONE 30 INCH THREE DIGIT SIGN IN AN OUTSIDE POSITION.
- B. WITH ONE 30 INCH THREE DIGIT SIGN IN THE CENTER POSITION OR TWO SUCH SIGNS IN THE OUTSIDE POSITIONS.
- C. WITH THREE 30 INCH THREE DIGIT SIGNS.

3. ALL HOLES SHALL BE 7/16 INCH DIAMETER. FOR OTHER SIGN COMBINATIONS THAN ABOVE, THE FRAME DIMENSIONS AND HOLE SPACING SHALL BE MODIFIED AS NECESSARY. THE FRAME SHALL BE PAINTED WITH ONE COAT OF PRIMER AND A SECOND COAT OF BLACK PAINT. THE PAINT SHALL BE OF THE TYPE USED ON EXTERIOR METAL SURFACES TO PREVENT METAL CORROSION.

4. STANDARD FRAMES SHALL BE 3/16 INCH x 1 1/2 INCH WELDED A-36 STEEL.

5. ALL OVERLAPPED CONNECTIONS SHALL BE WELDED WITH TWO, 1/4 INCH WIDE FILLET WELDS, 1 1/2 INCHES LONG.

KEY
 R = RADIUS
 TH = THICKNESS
 IND = INDENT

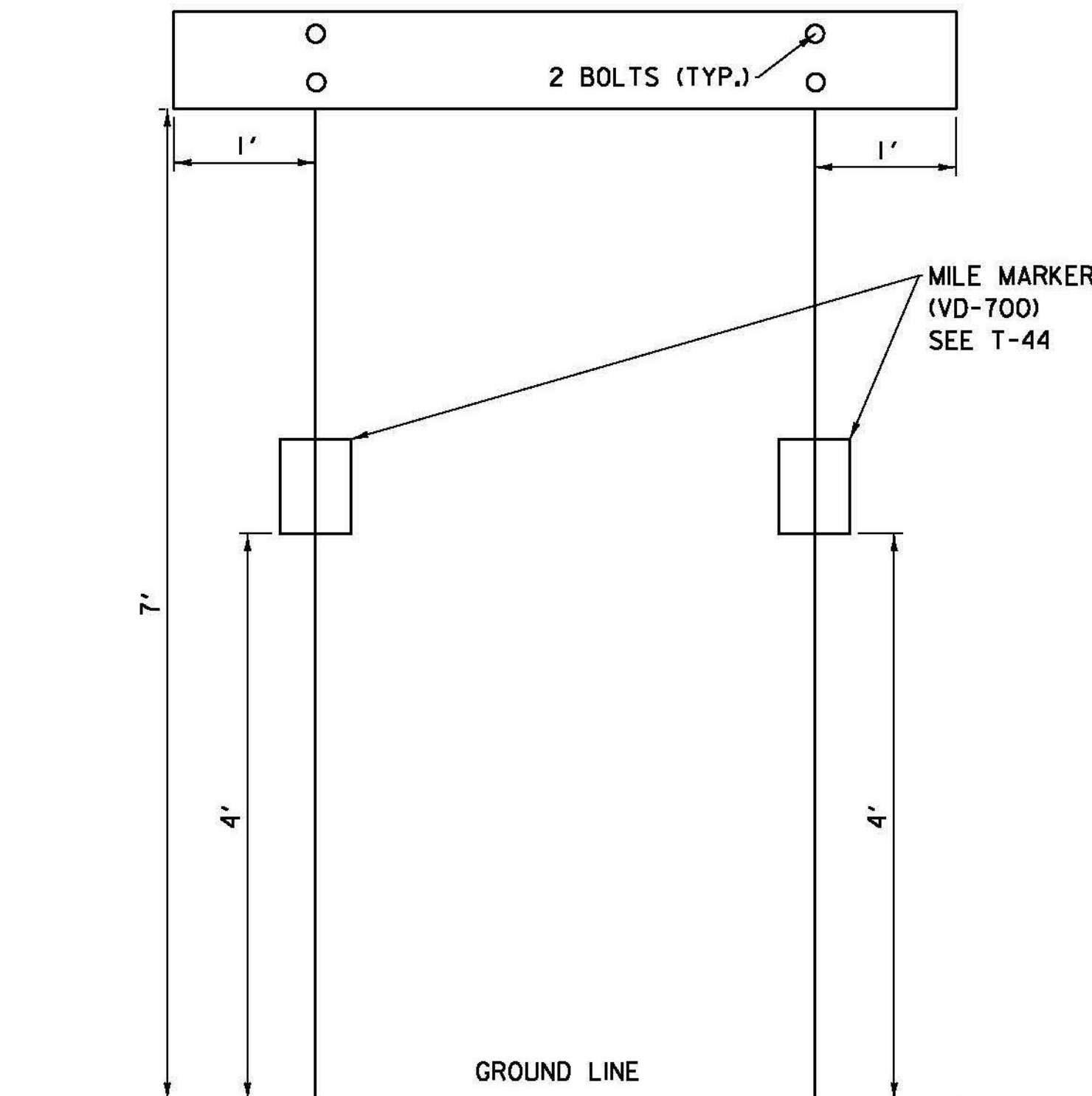
A - CARDINAL DIRECTION MARKER
 B - ROUTE NUMBER
 C - ADVANCE TURN ARROW OR DIRECTIONAL ARROW

* WHERE PARKING OR PEDESTRIAN TRAFFIC WILL OCCUR IN THE IMMEDIATE VICINITY OF THESE SIGNS MINIMUM VERTICAL CLEARANCE SHALL BE INCREASED TO SEVEN FEET

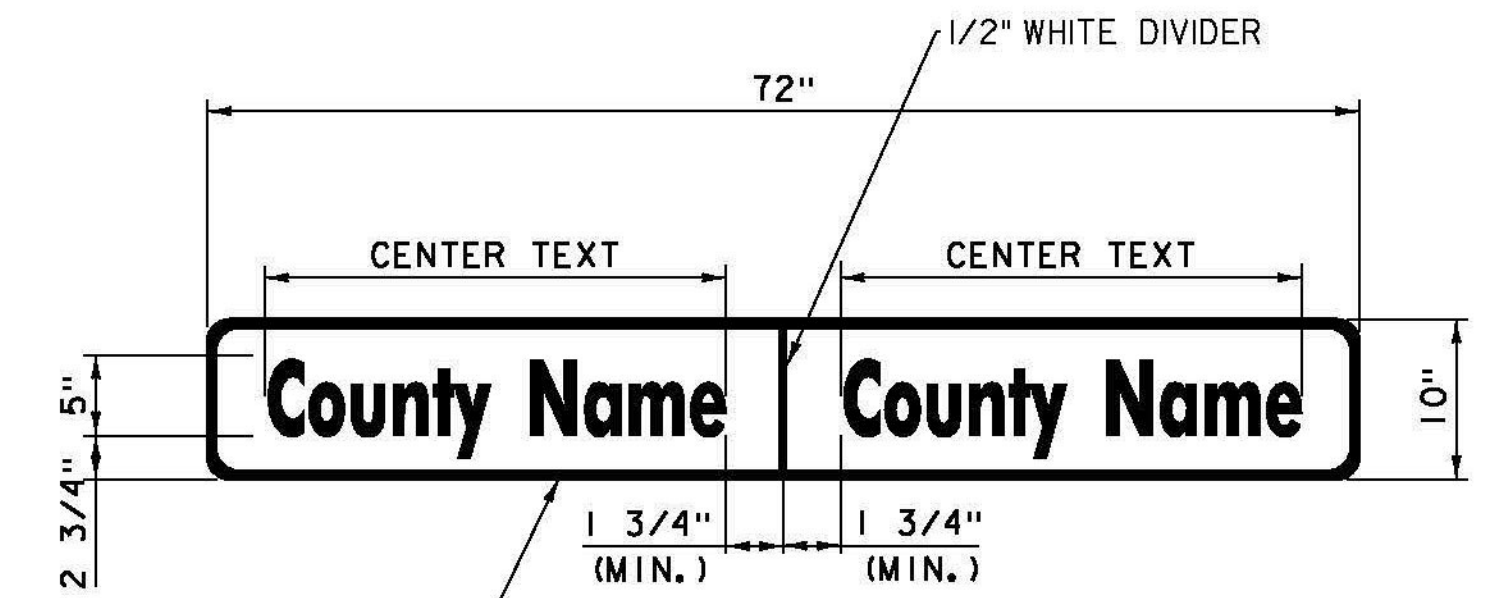
INSTALLATION SEQUENCE:

IN MULTIPLE HORIZONTAL MOUNTINGS PLACE A ROUTE MARKER ASSEMBLY INDICATING A LEFT TURN ON THE LEFT SIDE OF THE ASSEMBLY; RIGHT TURN ON THE RIGHT SIDE. FOR VERTICALLY STACKED MOUNTINGS PLACE THE STRAIGHT THROUGH MOVE INDICATION ON TOP, THE LEFT OR RIGHT TURNS AS APPROPRIATE BENEATH.

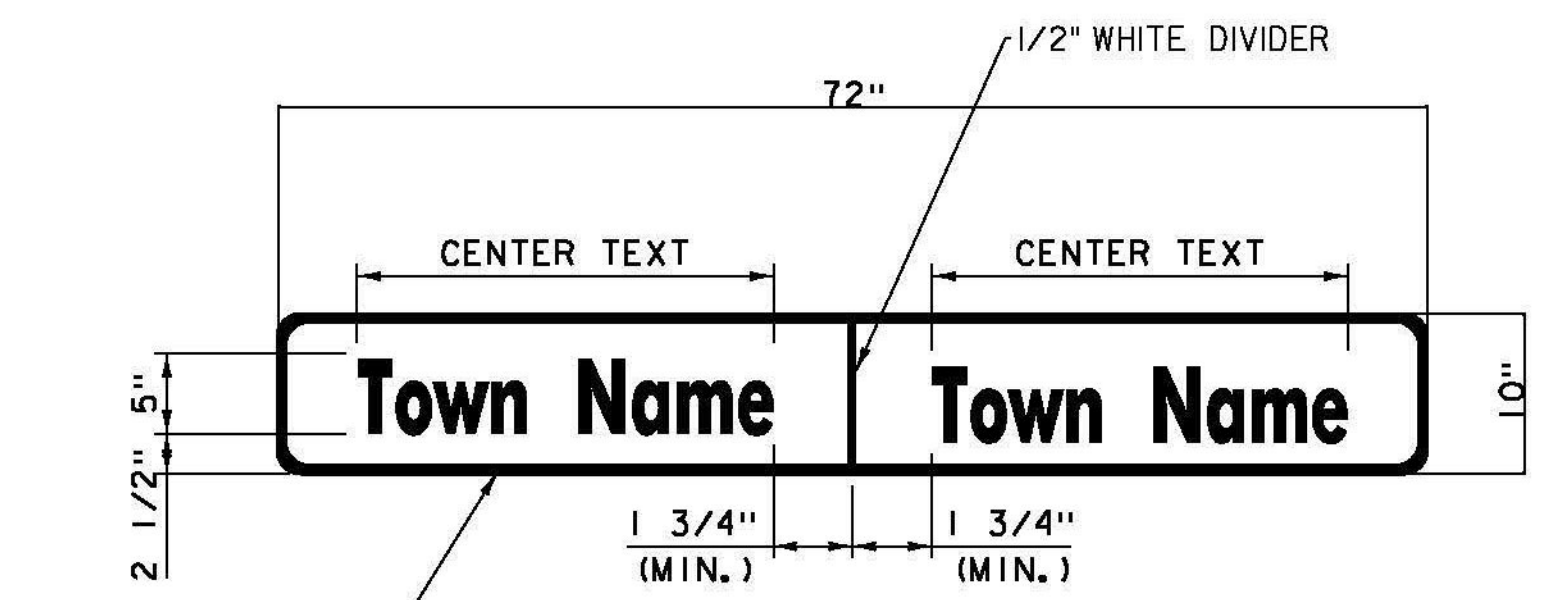
NOTE:
 VERTICAL FRAME MEMBERS SHALL LINE UP WITH SIGN POST ON WHICH THEY ARE MOUNTED.



TOWN LINE SIGN PLACEMENT



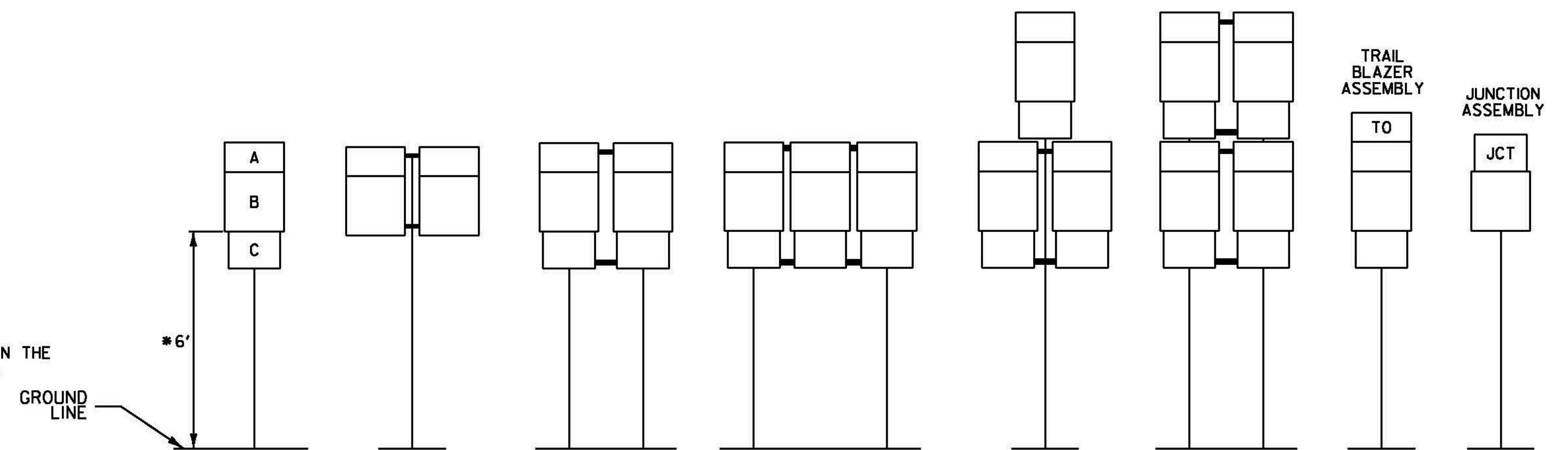
VD-024



VD-024

- 1.) WORD TO WORD SPACING FOR COUNTIES AND TWO WORD TOWN NAMES ARE ADJUSTABLE TO ACCOMMODATE DIMENSION REQUIREMENT.
- 2.) FONT SPACING MAY BE ADJUSTED TO MEET DIMENSION REQUIREMENT.
- 3.) DIMENSIONS SHOWN ARE APPROXIMATE AND MAY BE ADJUSTED SLIGHTLY TO ACCOMMODATE VARIOUS MANUFACTURER'S LETTER WIDTHS.

STANDARD MOUNTING OF ROUTE MARKER ASSEMBLIES



DETAILS ARE NOT TO SCALE

PROJECT NAME:	BETHEL-RANDOLPH	FILE NAME:	z10c244tsss.dgn	PLOT DATE:	4/23/2015
PROJECT NUMBER:	STP 2921(I)	PROJECT LEADER:	C. LATHROP	DRAWN BY:	S. LAMPHERE
		DESIGNED BY:	S. LAMPHERE	CHECKED BY:	C. LATHROP
		TRAFFIC SIGN DETAIL SHEET 2		SHEET	117 OF 211