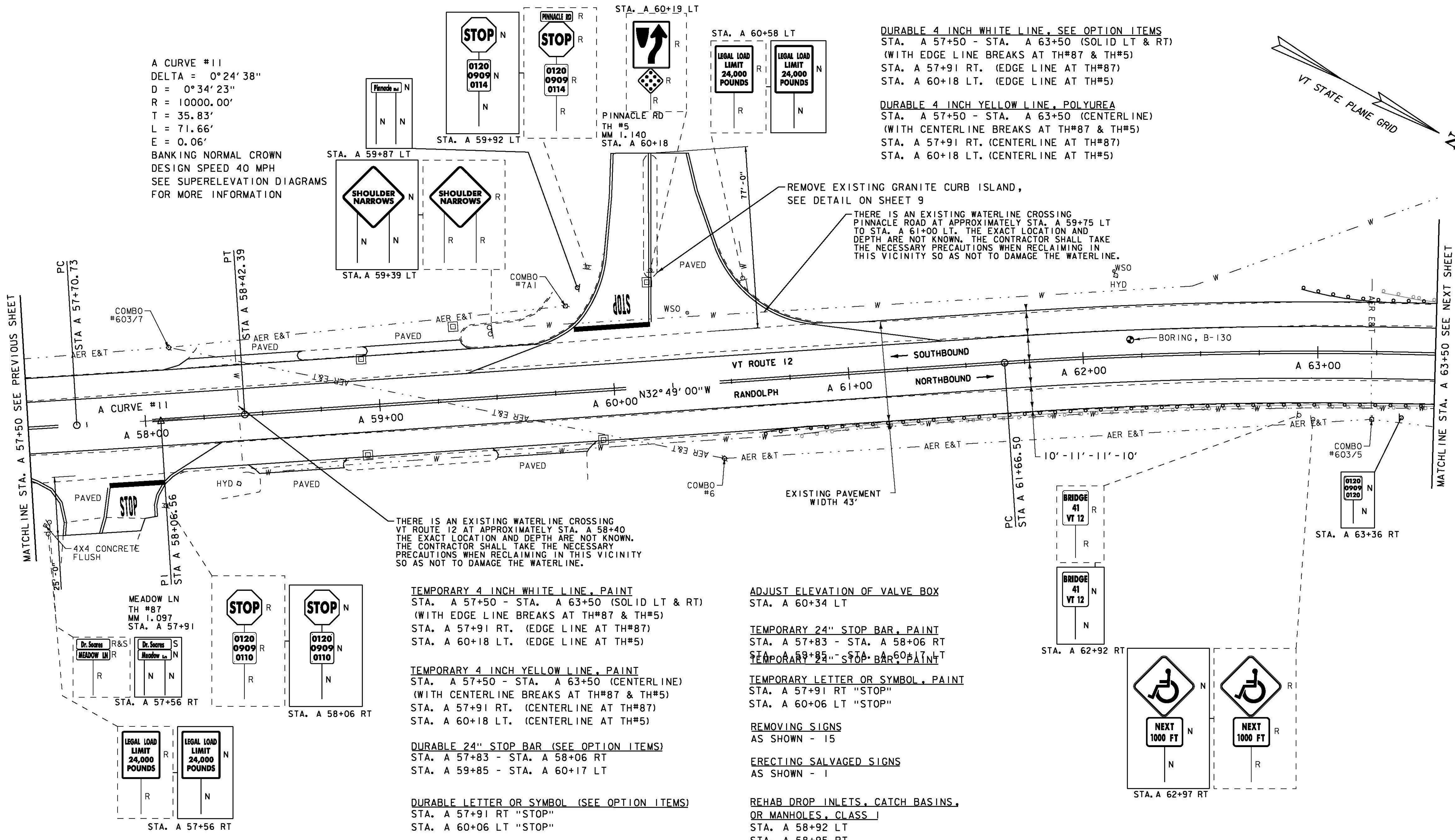
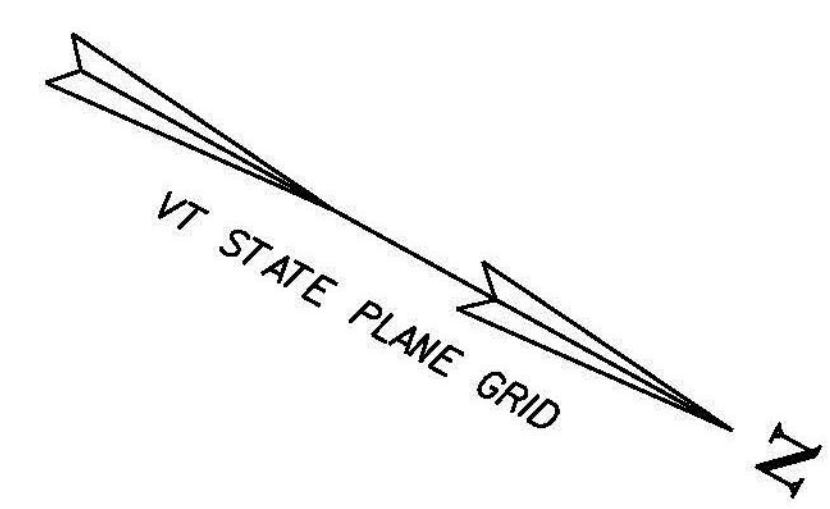


A CURVE #11
 DELTA = 0°24'38"
 D = 0°34'23"
 R = 10000.00'
 T = 35.83'
 L = 71.66'
 E = 0.06'

BANKING NORMAL CROWN
 DESIGN SPEED 40 MPH
 SEE SUPERELEVATION DIAGRAMS
 FOR MORE INFORMATION

DURABLE 4 INCH WHITE LINE, SEE OPTION ITEMS
 STA. A 57+50 - STA. A 63+50 (SOLID LT & RT)
 (WITH EDGE LINE BREAKS AT TH#87 & TH#5)
 STA. A 57+91 RT. (EDGE LINE AT TH#87)
 STA. A 60+18 LT. (EDGE LINE AT TH#5)

DURABLE 4 INCH YELLOW LINE, POLYUREA
 STA. A 57+50 - STA. A 63+50 (CENTERLINE)
 (WITH CENTERLINE BREAKS AT TH#87 & TH#5)
 STA. A 57+91 RT. (CENTERLINE AT TH#87)
 STA. A 60+18 LT. (CENTERLINE AT TH#5)



THERE IS AN EXISTING WATERLINE CROSSING
 VT ROUTE 12 AT APPROXIMATELY STA. A 58+40
 THE EXACT LOCATION AND DEPTH ARE NOT KNOWN.
 THE CONTRACTOR SHALL TAKE THE NECESSARY
 PRECAUTIONS WHEN RECLAIMING IN THIS VICINITY
 SO AS NOT TO DAMAGE THE WATERLINE.

REMOVE EXISTING GRANITE CURB ISLAND,
 SEE DETAIL ON SHEET 9

THERE IS AN EXISTING WATERLINE CROSSING
 PINNACLE ROAD AT APPROXIMATELY STA. A 59+75 LT
 TO STA. A 61+00 LT. THE EXACT LOCATION AND
 DEPTH ARE NOT KNOWN. THE CONTRACTOR SHALL TAKE
 THE NECESSARY PRECAUTIONS WHEN RECLAIMING IN
 THIS VICINITY SO AS NOT TO DAMAGE THE WATERLINE.

TEMPORARY 4 INCH WHITE LINE, PAINT
 STA. A 57+50 - STA. A 63+50 (SOLID LT & RT)
 (WITH EDGE LINE BREAKS AT TH#87 & TH#5)
 STA. A 57+91 RT. (EDGE LINE AT TH#87)
 STA. A 60+18 LT. (EDGE LINE AT TH#5)

TEMPORARY 4 INCH YELLOW LINE, PAINT
 STA. A 57+50 - STA. A 63+50 (CENTERLINE)
 (WITH CENTERLINE BREAKS AT TH#87 & TH#5)
 STA. A 57+91 RT. (CENTERLINE AT TH#87)
 STA. A 60+18 LT. (CENTERLINE AT TH#5)

DURABLE 24" STOP BAR (SEE OPTION ITEMS)
 STA. A 57+83 - STA. A 58+06 RT
 STA. A 59+85 - STA. A 60+17 LT

DURABLE LETTER OR SYMBOL (SEE OPTION ITEMS)
 STA. A 57+91 RT "STOP"
 STA. A 60+06 LT "STOP"

REMOVAL AND DISPOSAL OF GUARDRAIL
 STA. A 60+77.5 - STA. A 63+50 RT
 STA. A 63+26.5 - STA. A 63+50 LT

SPECIAL PROVISION (BOX BEAM GUARDRAIL W/7 FEET POSTS)
 STA. A 60+63 - STA. A 63+50 RT
 STA. A 62+93 - STA. A 63+50 LT

ADJUST ELEVATION OF VALVE BOX
 STA. A 60+34 LT

TEMPORARY 24" STOP BAR, PAINT
 STA. A 57+83 - STA. A 58+06 RT
 STA. A 59+85 - STA. A 60+17 LT

TEMPORARY LETTER OR SYMBOL, PAINT
 STA. A 57+91 RT "STOP"
 STA. A 60+06 LT "STOP"

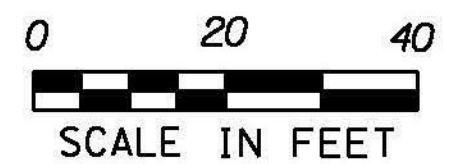
REMOVING SIGNS
 AS SHOWN - 15

ERECTING SALVAGED SIGNS
 AS SHOWN - 1

REHAB DROP INLETS, CATCH BASINS,
 OR MANHOLES, CLASS I
 STA. A 58+92 LT
 STA. A 58+95 RT
 STA. A 59+95 RT
 STA. A 60+17 LT (MAN HOLE COVER)

SIGN LEGEND

- R = REMOVE
- R&S = REMOVE AND SALVAGE
- RET = RETAIN
- S = SALVAGED
- N = NEW
- B-B = BACK TO BACK
- - = EXISTING
- = NEW



PROJECT NAME:	BETHEL-RANDOLPH	FILE NAME:	z10c244bdr.dgn	PLOT DATE:	4/23/2015
PROJECT NUMBER:	STP 2921(I)	PROJECT LEADER:	C. LATHROP	DRAWN BY:	S. LAMPHERE
		DESIGNED BY:	S. LAMPHERE	CHECKED BY:	C. LATHROP
		PLAN SHEET 56		SHEET 82 OF 211	