

DURABLE 4 INCH WHITE LINE, SEE OPTION ITEMS
 STA. 316+75 - STA. 322+50 (SOLID LT & RT)

TEMPORARY 4 INCH WHITE LINE, PAINT
 STA. 316+75 - STA. 322+50 (SOLID LT & RT)

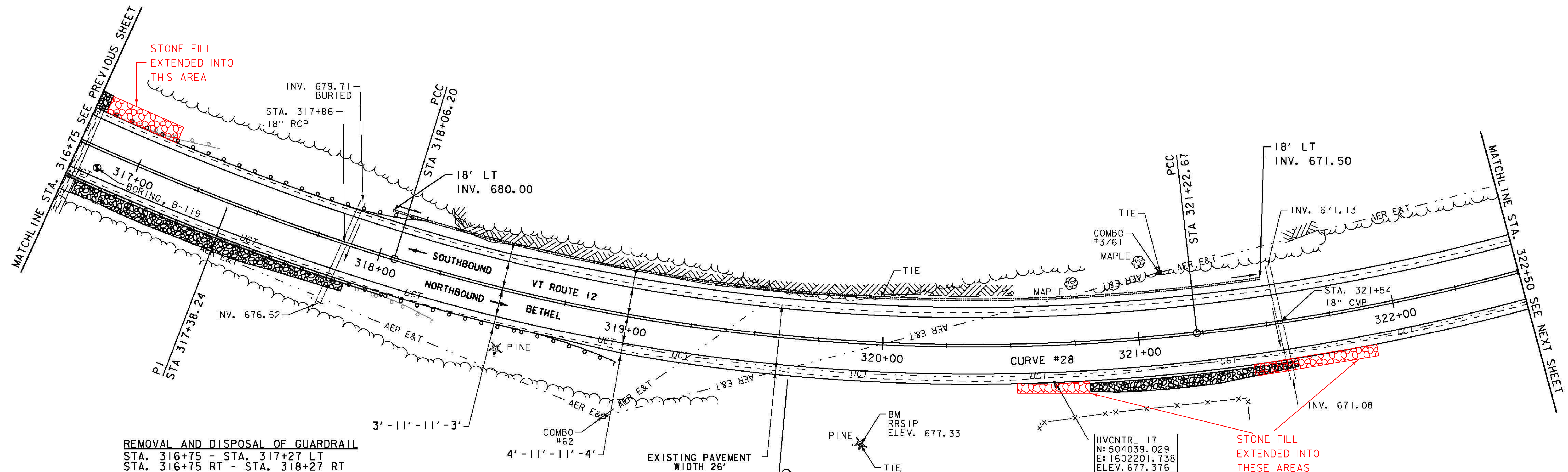
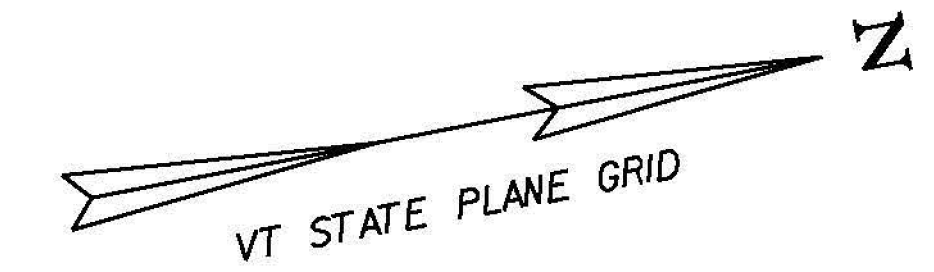
DURABLE 4 INCH YELLOW LINE, POLYUREA
 STA. 316+75 - STA. 322+50 (CENTERLINE)

TEMPORARY 4 INCH YELLOW LINE, PAINT
 STA. 316+75 - STA. 322+50 (CENTERLINE)

MILLED RUMBLE STRIPS
 STA. 316+75 - STA. 322+50 (CENTERLINE)

6 INCH UNDERDRAIN PIPE
 STA. 318+00 - STA. 321+50 LT

SOLID ROCK EXCAVATION
 STA. 318+25 - STA. ~~320+50~~ LT
 321+00



REMOVAL AND DISPOSAL OF GUARDRAIL
 STA. 316+75 - STA. 317+27 LT
 STA. 316+75 RT - STA. 318+27 RT

SPECIAL PROVISION (BOX BEAM GUARDRAIL W/7 FEET POSTS)
 STA. 316+75 - STA. 318+20 LT 318+24
 STA. 316+75 - STA. 319+03 RT

STONE FILL, TYPE I
 STA. 316+75 - STA. 317+10 LT
 STA. 316+80 - STA. 317+90 RT
 STA. 320+53 - STA. 321+89 RT

SIGN LEGEND

- R = REMOVE
- R&S = REMOVE AND SALVAGE
- RET = RETAIN
- S = SALVAGED
- N = NEW
- B-B = BACK TO BACK
- - = EXISTING
- = NEW

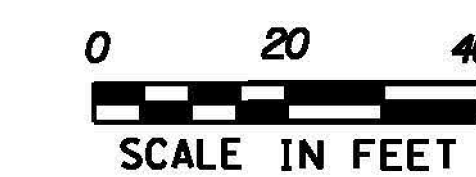
STONE FILL, TYPE I
~~STA. 316+75 - STA. 316+80 LT~~
~~STA. 316+80 - STA. 317+90 RT~~
~~STA. 320+80 - STA. 321+60 RT~~

GEOTEXTILE FOR SILT FENCE
 STA. 316+75 - STA. 316+80 LT
 STA. 316+80 - STA. 317+90 RT
 STA. 320+80 - STA. 321+60 RT

GRUBBING MATERIAL (6")
 STA. 316+75 - STA. 316+80 LT
 STA. 316+80 - STA. 317+90 RT
 STA. 320+80 - STA. 321+60 RT

BM RRSIP
 ELEV. 677.33
 PINE
 TIE

CURVE #28
 DELTA = 72°25'49"
 D = 5°43'46" (1) D = 7°26'28" (2) D = 6°44'26" (3) D = 6°21'58" (4)
 R = 1000.00' (1) R = 770.00' (2) R = 850.00' (3) R = 900.00' (4)
 T = 616.66' (1) T = 624.17' (2)
 L = 136.13' (1) L = 316.47' (2) L = 399.55' (3) L = 222.26' (4)
 E = 174.85'
 BANKING 0.076 FT/FT, 0.080 FT/FT, 0.079 FT/FT, 0.078 FT/FT
 DESIGN SPEED 50 MPH
 SEE SUPERELEVATION DIAGRAMS
 FOR MORE INFORMATION



| | |
|-------------------------------|------------------------|
| PROJECT NAME: BETHEL-RANDOLPH | PLOT DATE: 4/23/2015 |
| PROJECT NUMBER: STP 292(I) | DRAWN BY: S. LAMPHERE |
| FILE NAME: z10c244bdr.dgn | CHECKED BY: C. LATHROP |
| PROJECT LEADER: C. LATHROP | SHEET 62 OF 211 |
| DESIGNED BY: S. LAMPHERE | |
| PLAN SHEET 36 | |