

DURABLE 4 INCH WHITE LINE, SEE OPTION ITEMS  
 STA. 206+50 - STA. 211+75 (SOLID LT & RT)  
 (WITH EDGE LINE BREAKS AT TH#24)  
 STA. 210+28 RT (EDGE LINE AT TH#24)

DURABLE 4 INCH YELLOW LINE, POLYUREA  
 STA. 206+50 - STA. 211+75 (CENTERLINE)  
 (WITH CENTERLINE BREAKS AT TH#24)  
 STA. 210+28 RT (CENTERLINE AT TH#24)

DURABLE 24" STOP BAR (SEE OPTION ITEMS)  
 STA. 210+23 - STA. 210+41 RT

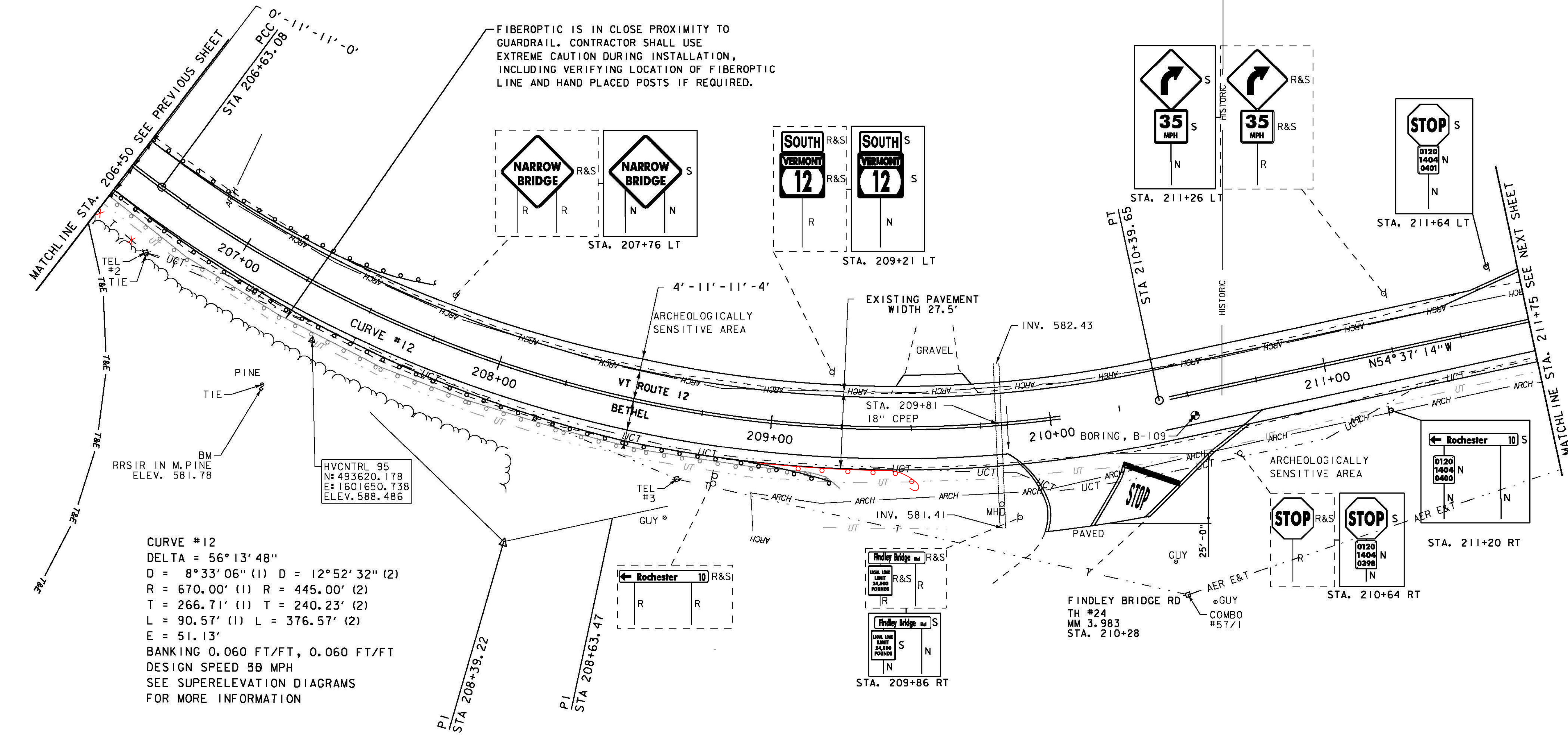
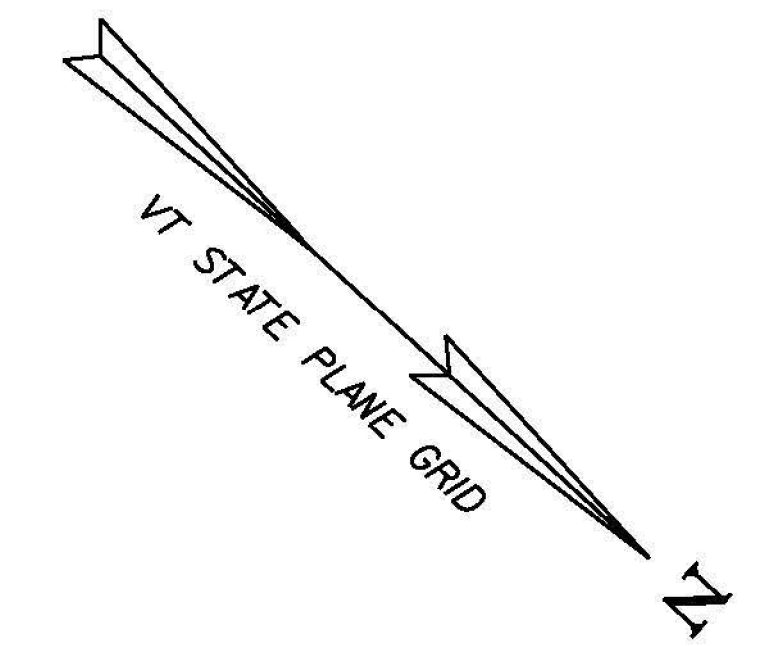
DURABLE LETTER OR SYMBOL (SEE OPTION ITEMS)  
 STA. 210+25 RT "STOP"

TEMPORARY 4 INCH WHITE LINE, PAINT  
 STA. 206+50 - STA. 211+75 (SOLID LT & RT)  
 (WITH EDGE LINE BREAKS AT TH#24)  
 STA. 210+28 RT (EDGE LINE AT TH#24)

TEMPORARY 4 INCH YELLOW LINE, PAINT  
 STA. 206+50 - STA. 211+75 (CENTERLINE)  
 (WITH CENTERLINE BREAKS AT TH#24)  
 STA. 210+28 RT (CENTERLINE AT TH#24)

TEMPORARY 24" STOP BAR, PAINT  
 STA. 210+23 - STA. 210+41 RT

TEMPORARY LETTER OR SYMBOL, PAINT  
 STA. 210+25 RT "STOP"



**CURVE #12**  
 DELTA = 56° 13' 48"  
 D = 8° 33' 06" (1) D = 12° 52' 32" (2)  
 R = 670.00' (1) R = 445.00' (2)  
 T = 266.71' (1) T = 240.23' (2)  
 L = 90.57' (1) L = 376.57' (2)  
 E = 51.13'  
 BANKING 0.060 FT/FT, 0.060 FT/FT  
 DESIGN SPEED 50 MPH  
 SEE SUPERELEVATION DIAGRAMS  
 FOR MORE INFORMATION

HVCNTRL 95  
 N: 493620.178  
 E: 1601650.738  
 ELEV. 588.486

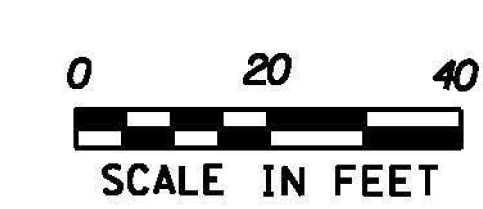
**SIGN LEGEND**  
 R = REMOVE  
 R&S = REMOVE AND SALVAGE  
 RET = RETAIN  
 S = SALVAGED  
 N = NEW  
 B-B = BACK TO BACK  
 - - = EXISTING  
 — = NEW

**REMOVAL AND DISPOSAL OF GUARDRAIL**  
 STA. 206+50 - STA. 209+25 RT

**SPECIAL PROVISION (BOX BEAM GUARDRAIL W/7 FEET POSTS)**  
 STA. 206+50 - STA. 207+70 LT 207+60  
 STA. 206+50 - STA. 209+23.5 RT  
 209+55

**REMOVING SIGNS**  
 AS SHOWN - 9

**ERECTING SALVAGED SIGNS**  
 AS SHOWN - 10



PROJECT NAME:	BETHEL-RANDOLPH	PLOT DATE:	4/23/2015
PROJECT NUMBER:	STP 292(I)	DRAWN BY:	S. LAMPHERE
FILE NAME:	z10c244bdr.dgn	CHECKED BY:	C. LATHROP
DESIGNED BY:	S. LAMPHERE	SHEET	42 OF 211
PLAN SHEET	16		