

DURABLE 4 INCH WHITE LINE, SEE OPTION ITEMS
STA. 146+25 - STA. 151+50 (SOLID LT & RT)

DURABLE 4 INCH YELLOW LINE, POLYUREA
STA. 146+25 - STA. 151+50 (CENTERLINE)

REMOVING SIGNS
AS SHOWN - 3

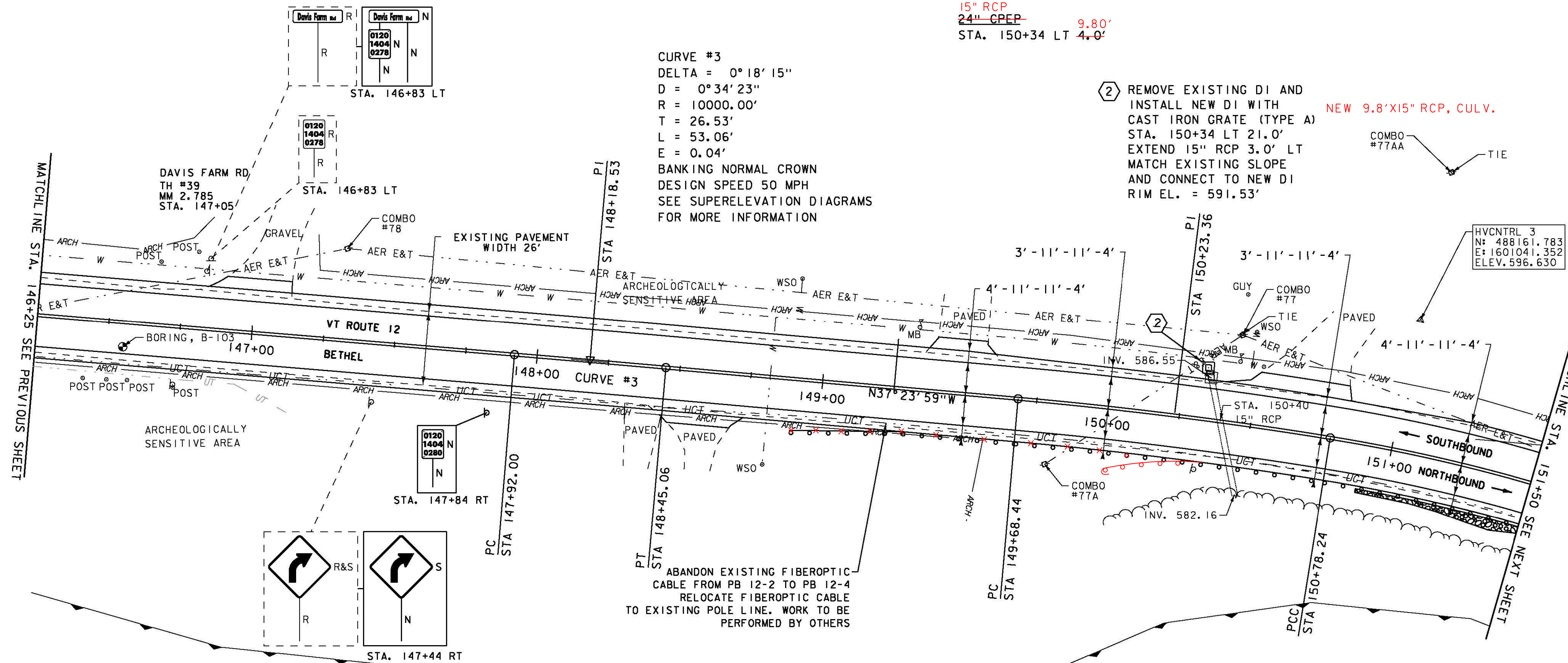
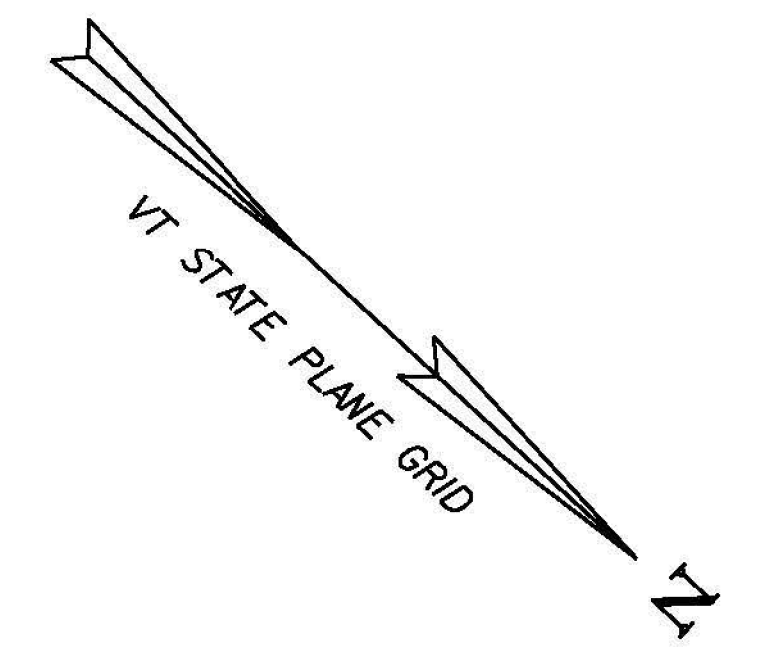
ERECTING SALVAGED SIGNS
AS SHOWN - 1

TEMPORARY 4 INCH WHITE LINE, PAINT
STA. 146+25 - STA. 151+50 (SOLID LT & RT)

TEMPORARY 4 INCH YELLOW LINE, PAINT
STA. 146+25 - STA. 151+50 (CENTERLINE)

PRECAST REINFORCED CONCRETE
DROP INLET WITH CAST IRON GRATE
STA. 150+34 LT

15" RCP
~~24" CPEP~~ 9.80'
STA. 150+34 LT 4.0'



CURVE #3
DELTA = 0°18'15"
D = 0°34'23"
R = 10000.00'
T = 26.53'
L = 53.06'
E = 0.04'
BANKING NORMAL CROWN
DESIGN SPEED 50 MPH
SEE SUPERELEVATION DIAGRAMS
FOR MORE INFORMATION

② REMOVE EXISTING DI AND
INSTALL NEW DI WITH
CAST IRON GRATE (TYPE A)
STA. 150+34 LT 21.0'
EXTEND 15" RCP 3.0' LT
MATCH EXISTING SLOPE
AND CONNECT TO NEW DI
RIM EL. = 591.53'

MATCHLINE STA. 146+25 SEE PREVIOUS SHEET

MATCHLINE STA. 151+50 SEE NEXT SHEET

REMOVAL AND DISPOSAL OF GUARDRAIL
STA. 150+23 - STA. 151+50 RT

SPECIAL PROVISION (BOX BEAM GUARDRAIL W/7 FEET POSTS)
STA. ~~148+90~~ 150+00 - STA. 151+50 RT

SIGN LEGEND
R = REMOVE
R&S = REMOVE AND SALVAGE
RET = RETAIN
S = SALVAGED
N = NEW
B-B = BACK TO BACK
- - = EXISTING
— = NEW

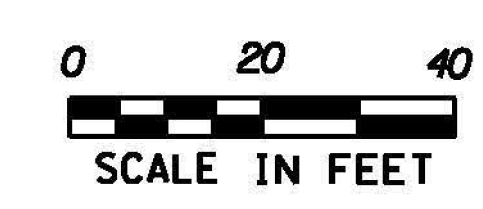
STONE FILL, TYPE 1
STA. 150+90 - STA. 151+50 RT

GEOTEXTILE FOR SILT FENCE
STA. 150+90 - STA. 151+50 RT

GRUBBING MATERIAL (6")
STA. 150+90 - STA. 151+50 RT

ENVIRONMENTALLY SENSITIVE LOCATIONS:

| NO. | LIMITS | POS. | TYPE |
|-----|---------------------------|------|------|
| 2. | STA. 146+25 - STA. 151+50 | RT | - |



| | | | |
|-----------------|-----------------|--------------|-----------------|
| PROJECT NAME: | BETHEL-RANDOLPH | PLOT DATE: | 4/23/2015 |
| PROJECT NUMBER: | STP 292(I) | DRAWN BY: | S. LAMPHERE |
| FILE NAME: | z10c244bdr.dgn | DESIGNED BY: | S. LAMPHERE |
| | | CHECKED BY: | C. LATHROP |
| | | PLAN SHEET 5 | SHEET 31 OF 211 |