

GPS CONTROL POINTS

HVCTRL #92

BQ1007
 NORTH = 501884.171
 EAST = -1601312.154
 ELEV. = 775.674

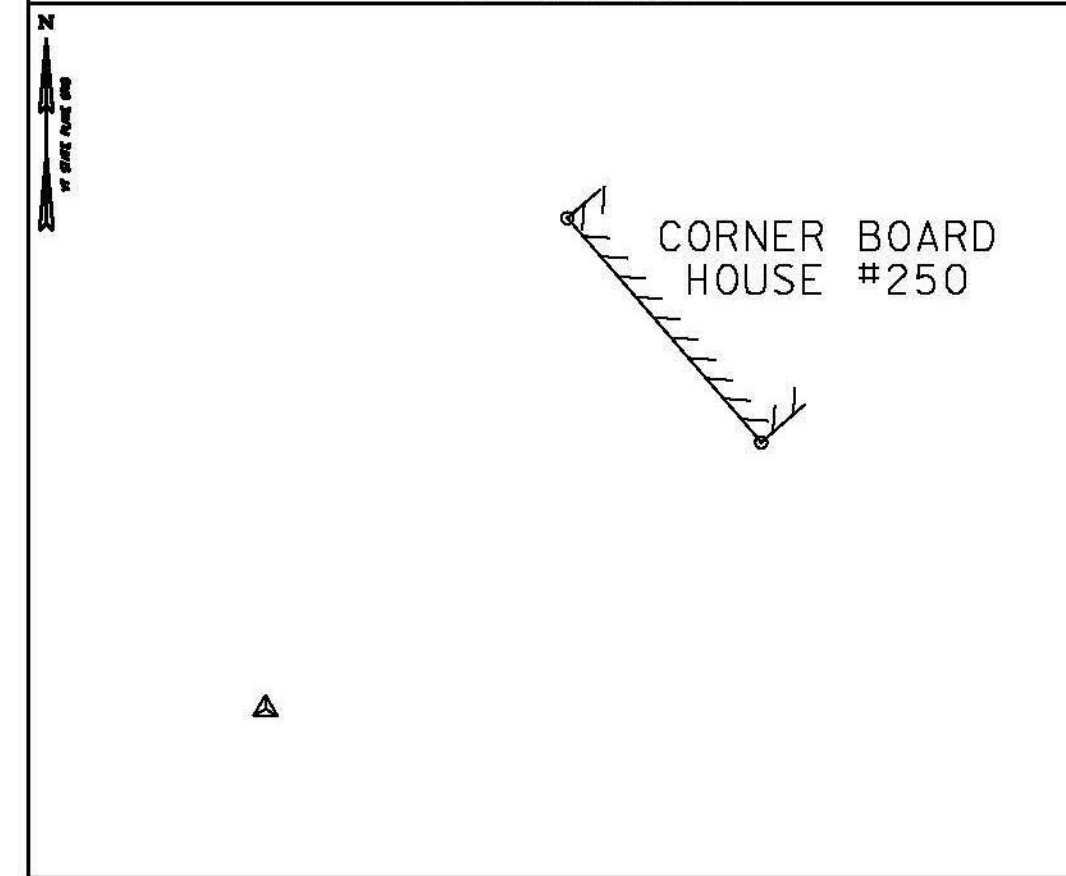
HVCTRL #93

RAND 9
 NORTH = 514934.710
 EAST = -1596771.144
 ELEV. = 822.027

TRAVERSE TIES

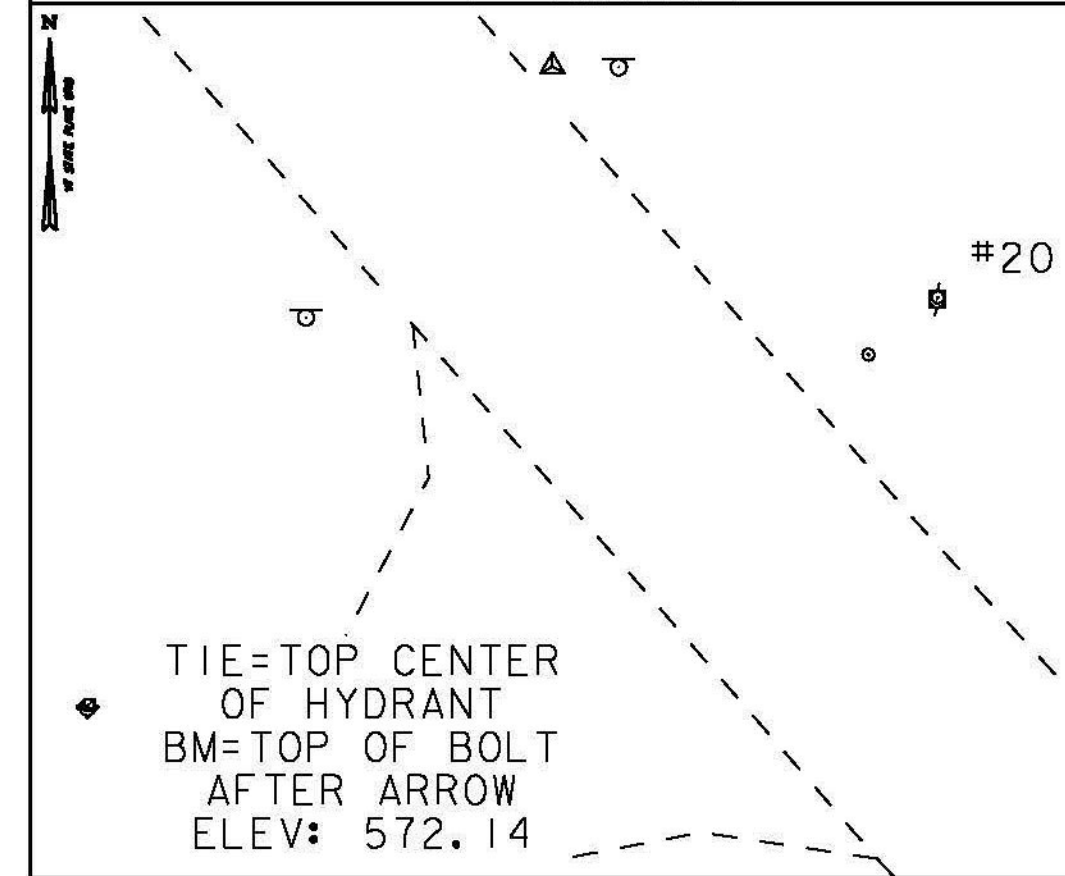
HVCTRL #1

NORTH = 485821.686
 EAST = -1603066.721
 ELEV. = 571.594



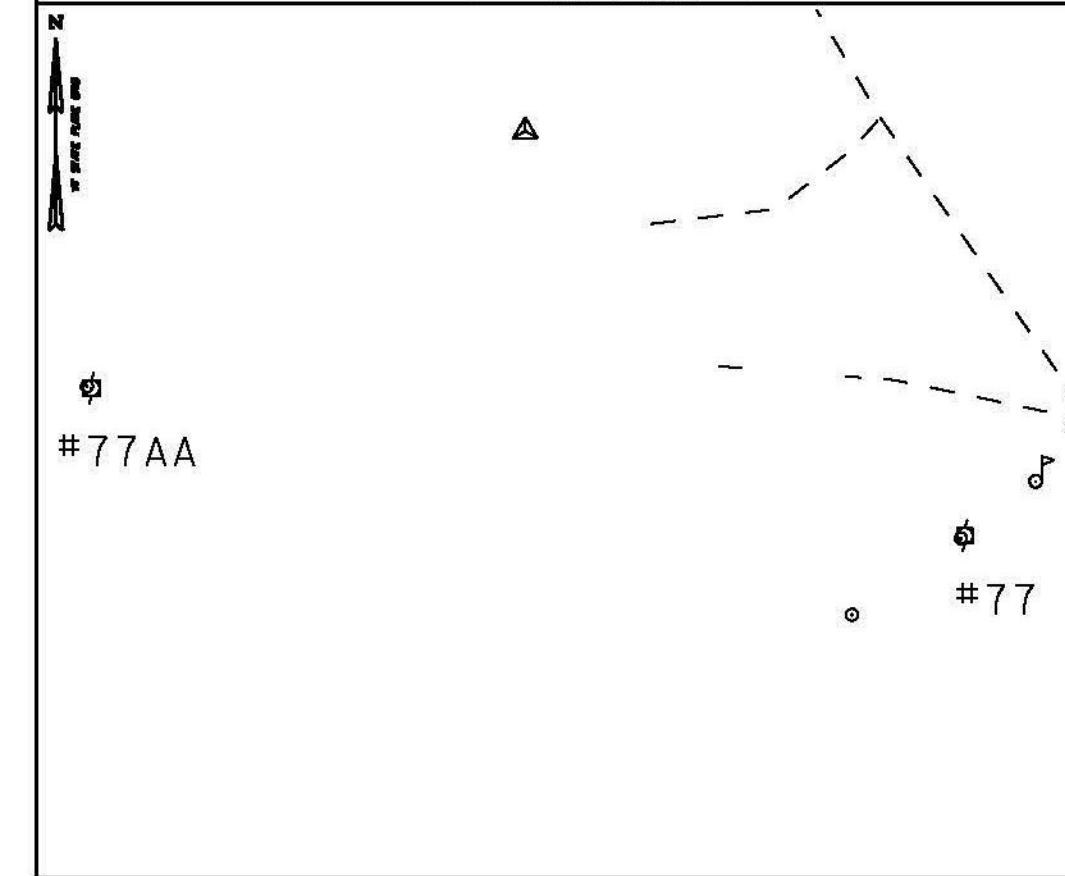
HVCTRL #2

NORTH = 487150.993
 EAST = -1601900.497
 ELEV. = 570.432



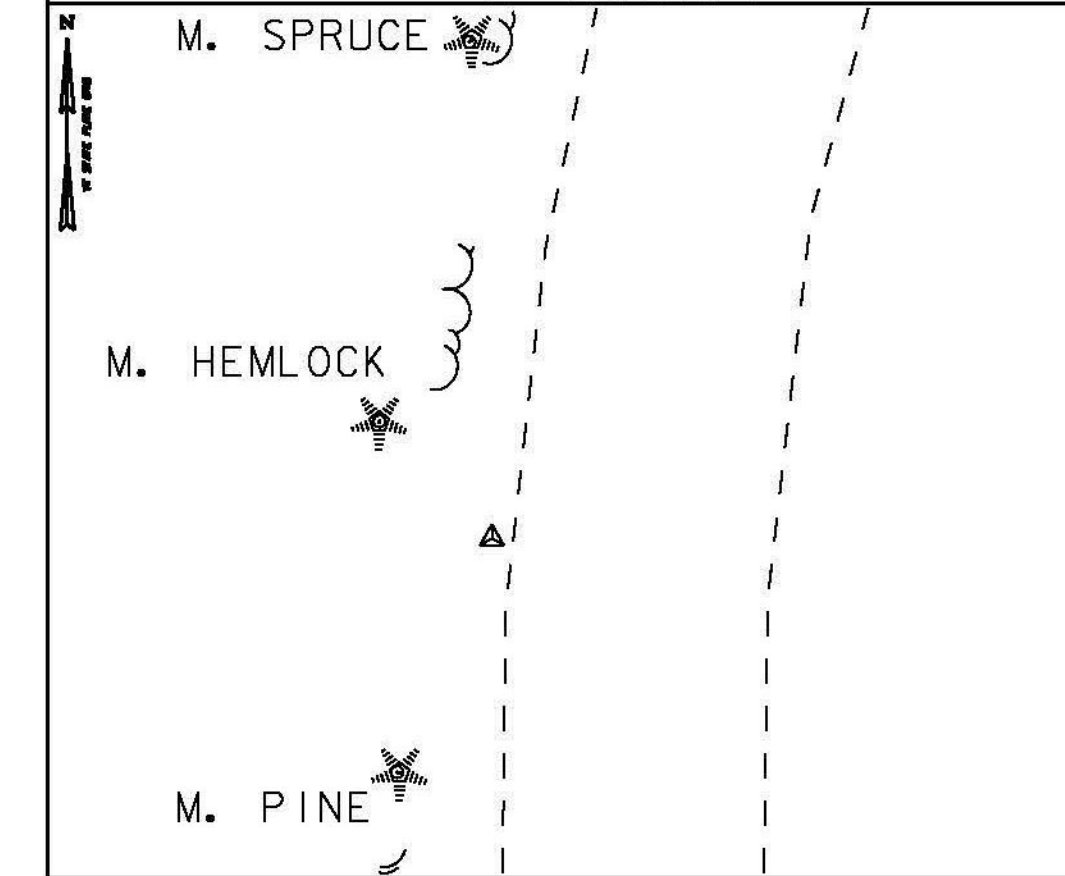
HVCTRL #3

NORTH = 488161.783
 EAST = -1601041.352
 ELEV. = 596.630



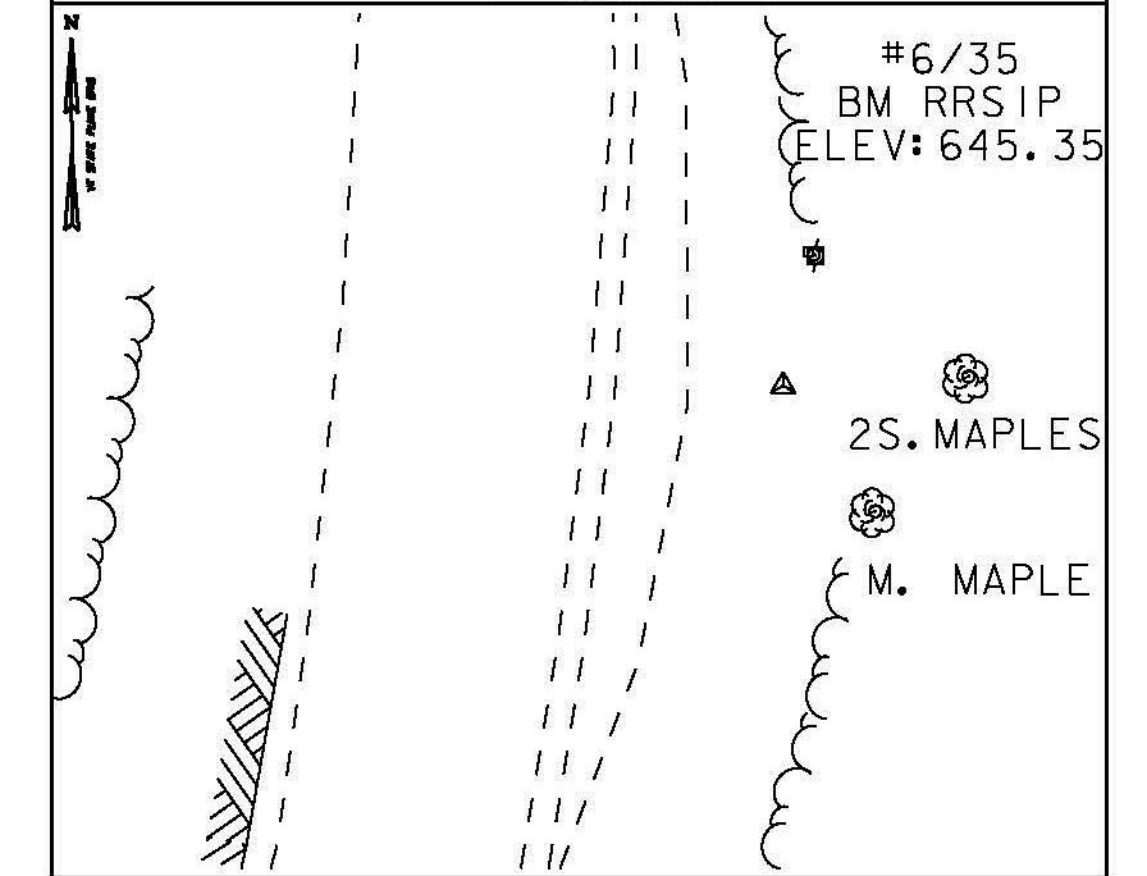
HVCTRL #4

NORTH = 489516.733
 EAST = -1600834.017
 ELEV. = 627.245



HVCTRL #5

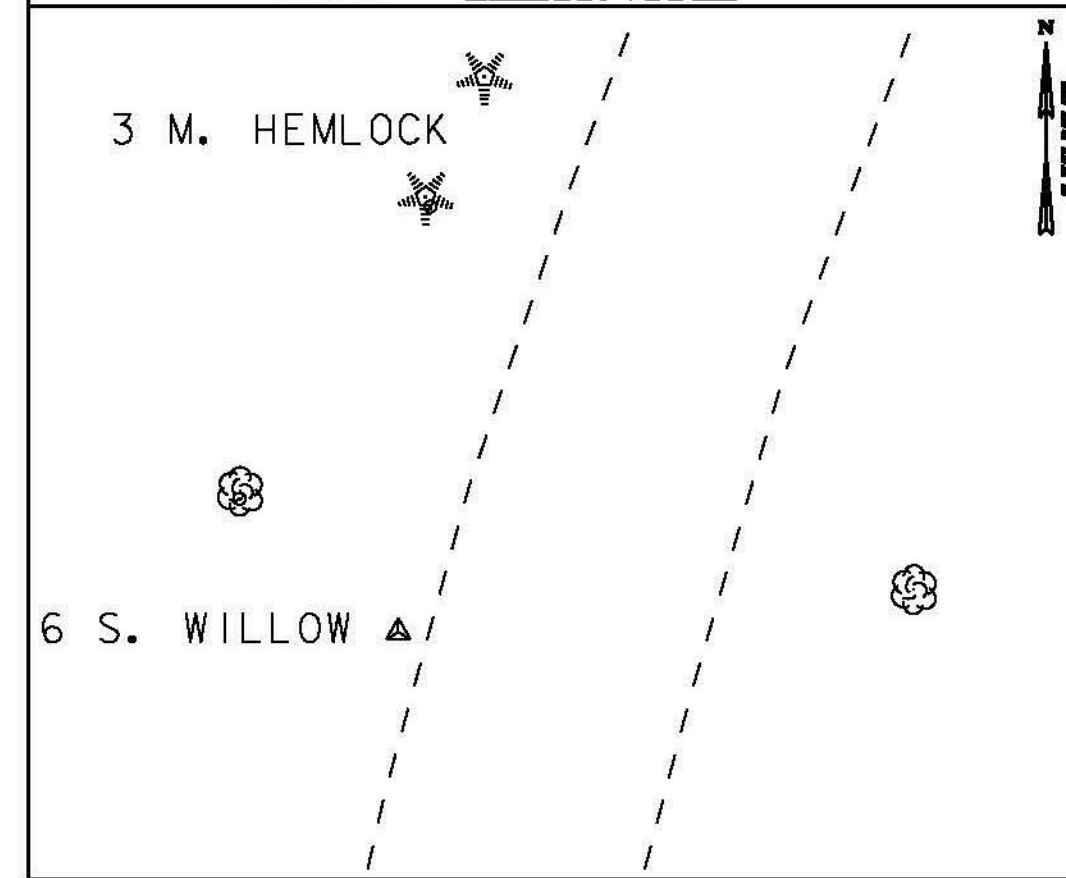
NORTH = 490130.013
 EAST = -160132.478
 ELEV. = 643.582



TRAVERSE TIES

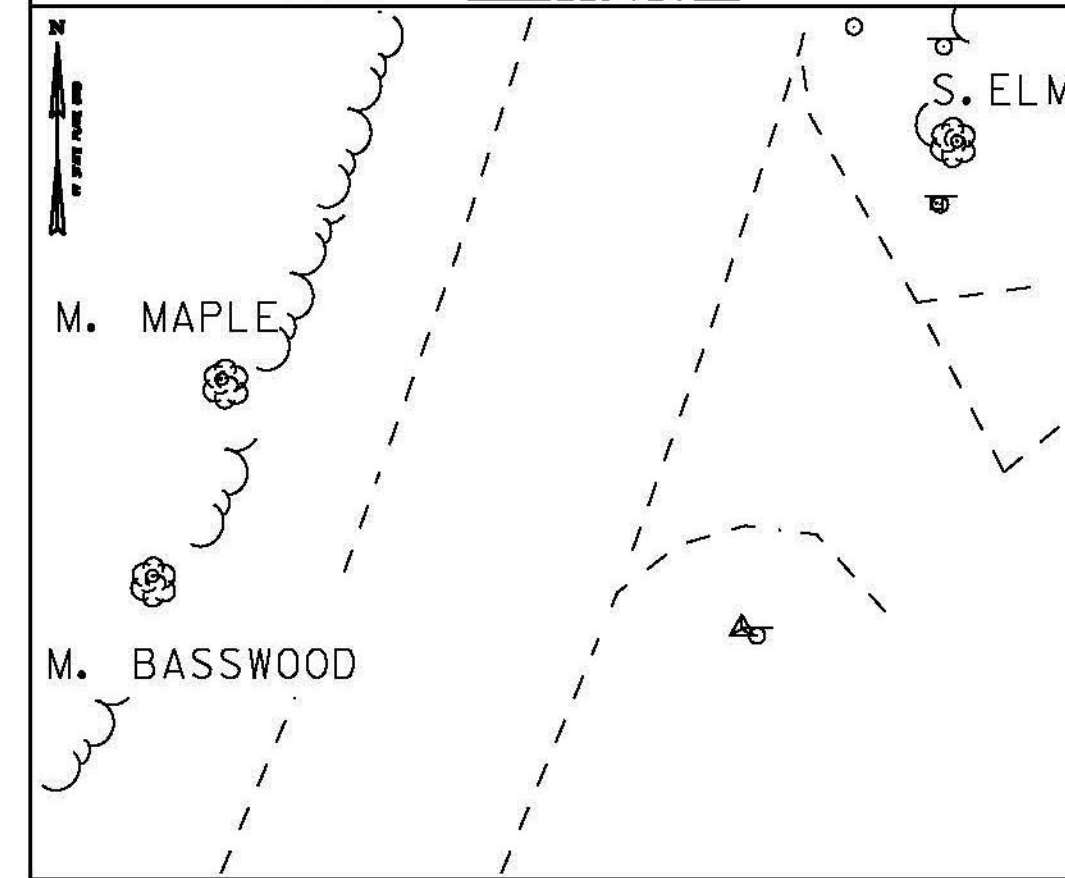
HVCTRL #6

NORTH = 490654.634
 EAST = -1601070.130
 ELEV. = 628.193



HVCTRL #7

NORTH = 491569.009
 EAST = -1601578.449
 ELEV. = 592.151



HVCTRL #90

BQ1004
 NORTH = 492740.238
 EAST = -1601668.364
 ELEV. = 578.191

GPS CONTROL POINTS

DATUM	
VERTICAL	NAVD 88
HORIZONTAL	NAD 83 CORS
ADJUSTMENT	COMPASS

PROJECT NAME:	BETHEL-RANDOLPH
PROJECT NUMBER:	STP 2921(I)
FILE NAME:	z10c244t1e.dgn
PROJECT LEADER:	C. LATHROP
DESIGNED BY:	S. LAMPHERE
TIE SHEET I	
PLOT DATE:	4/23/2015
DRAWN BY:	R. BULLOCK
CHECKED BY:	C. LATHROP
SHEET	4 OF 211