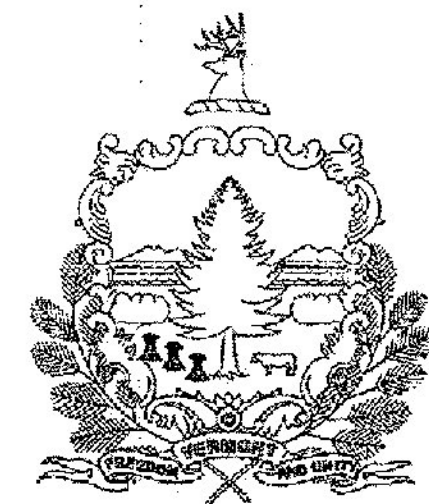
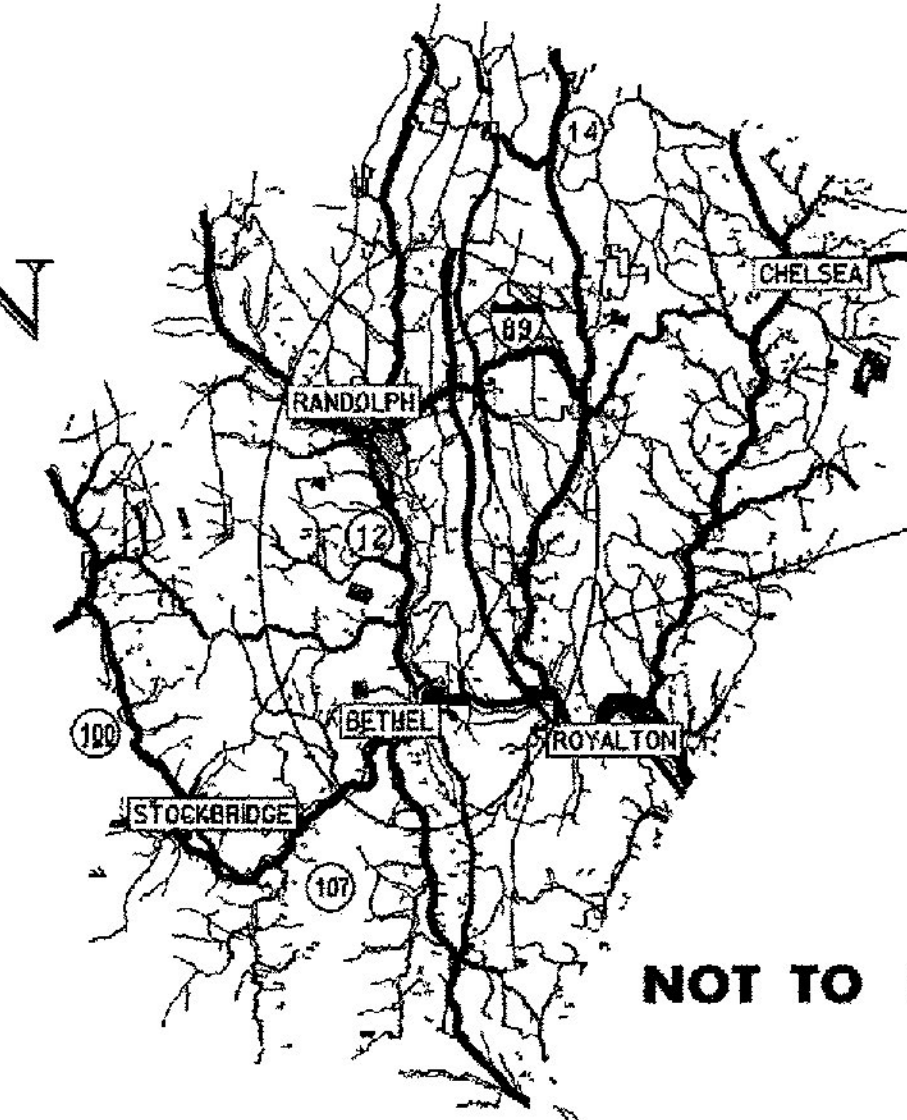


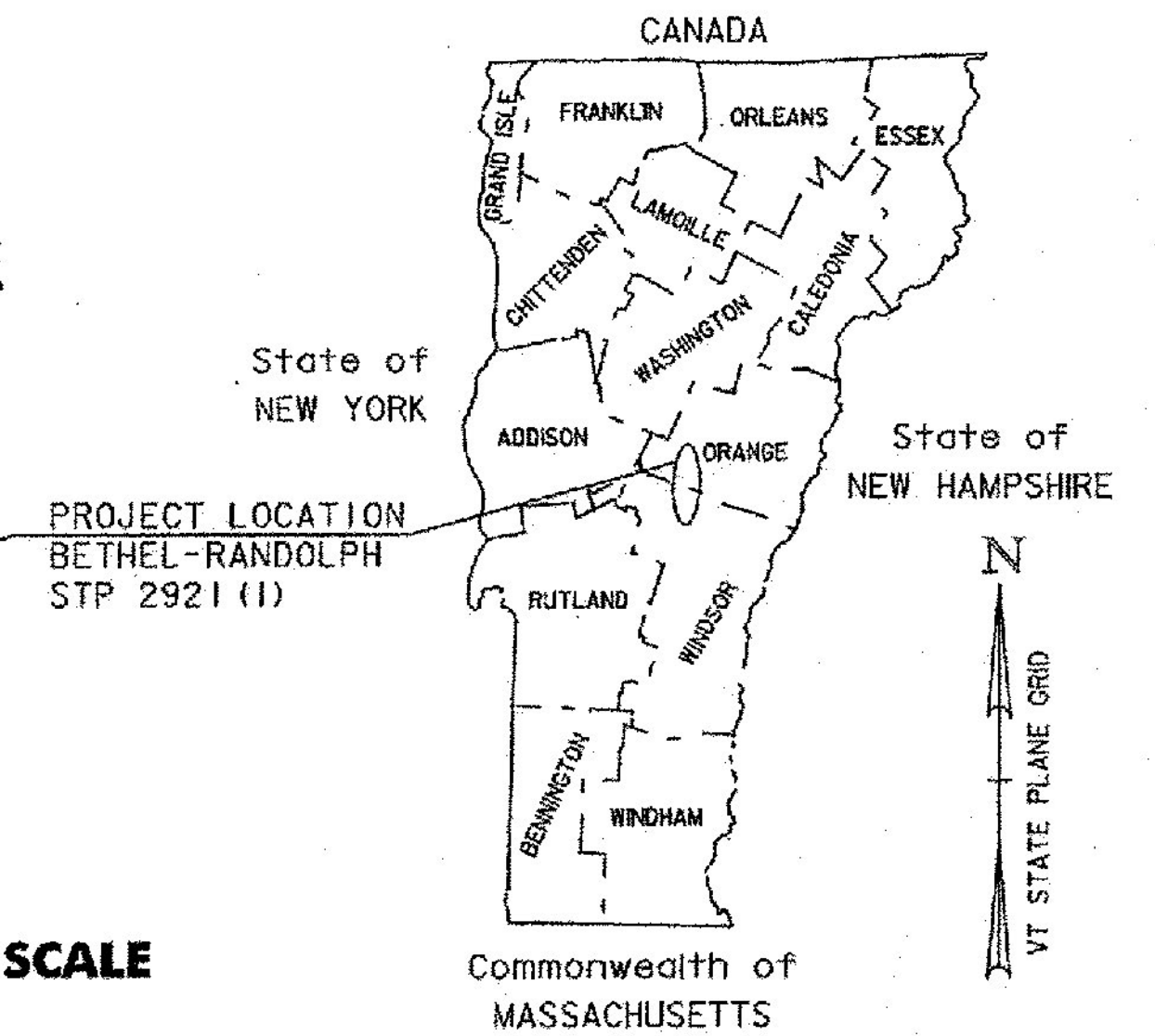
STATE OF VERMONT AGENCY OF TRANSPORTATION



PROPOSED IMPROVEMENT TOWNS OF BETHEL AND RANDOLPH COUNTIES OF WINDSOR AND ORANGE VT ROUTE 12 (MAJOR COLLECTOR)



NOT TO SCALE



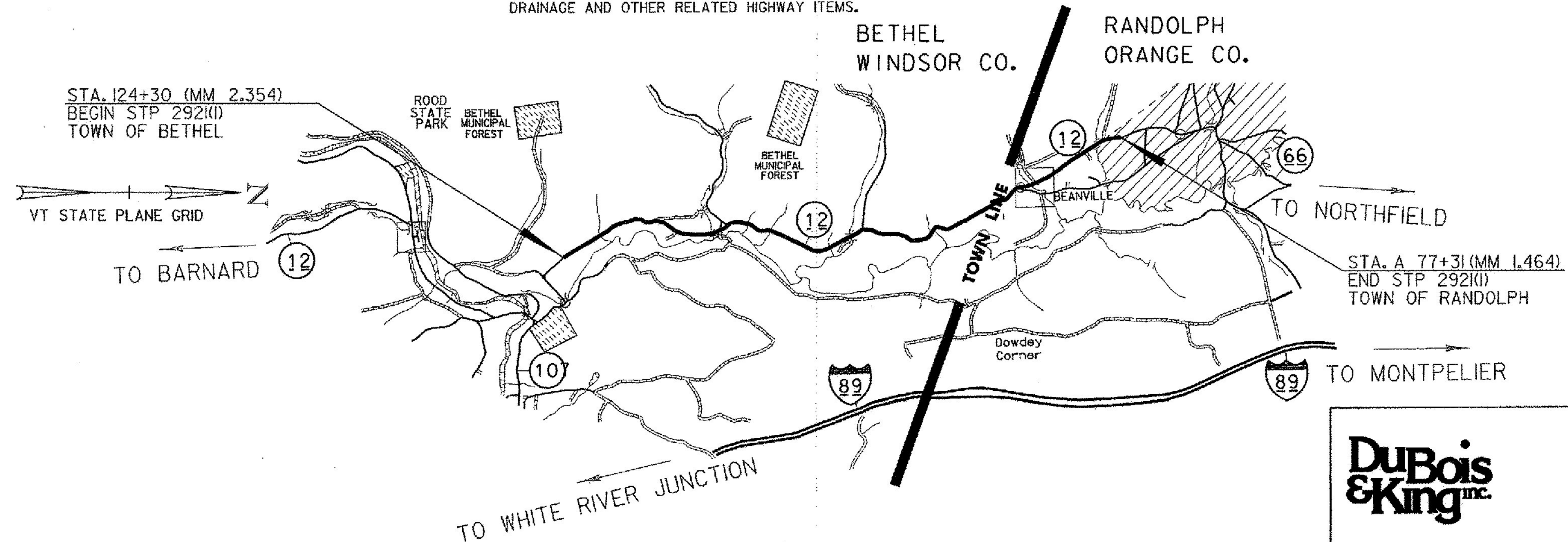
RECORD PLANS	
CONTRACTOR:	PIKE INDUSTRIES, INC. - BERLIN, VT
RESIDENT ENGINEER:	CHRIS BARKER
CONSTRUCTION BEGAN:	AUGUST 24, 2015
CONSTRUCTION COMPLETE:	AUGUST 25, 2016
RECORD PLANS BY:	CHRIS BARKER & JESSE IVES
I HEREBY CERTIFY THAT ALL THE CONSTRUCTION REQUIRED BY THIS SET OF DRAWINGS HAS BEEN ACCOMPLISHED AS INDICATED HEREIN.	
BY:	RESIDENT ENGINEER
DATE:	03/14/17
NOTE: Any further information concerning final quantities, amounts or other details relative to this project may be found by contacting Vtrans Records Management.	

BEGINNING AT A POINT, ON VT ROUTE 12, IN THE TOWN OF BETHEL, AT STA. 124+30.00= MM 2.354 AND EXTENDING NORTH ALONG VT ROUTE 12 FOR A DISTANCE OF APPROXIMATELY 32,342 FEET (6.125 MILES) TO A POINT AT STA. A 77+31.00 = MM 1.464 IN THE TOWN OF RANDOLPH.

STATION TO STATION DATA	LENGTH (FEET)	LENGTH (MILES)
TOWN OF BETHEL STA. 124+30.00 TO STA. 370+41.00 (MM 2.354 TO MM 7.015)	24611.00	4.661
TOWN OF RANDOLPH STA. A 0+00.00 TO STA. A 77+31.00 (MM 0.000 TO MM 1.464)	7731.00	1.464

TOTAL ROADWAY LENGTH =	32342.00	6.125
TOTAL PROJECT LENGTH =	32342.00	6.125

WORK TO BE PERFORMED UNDER THIS PROJECT INCLUDES COLD PLANING, RECLAIMING, CORRECTING SUPERELEVATION DEFICIENCIES, RESURFACING WITH BASE, INTERMEDIATE, AND WEARING COURSES, NEW PAVEMENT MARKINGS, GUARDRAIL, DRAINAGE AND OTHER RELATED HIGHWAY ITEMS.



STATIONING PREFACE DESIGNATION:
NO DESIGNATION = BETHEL
A = RANDOLPH

CONSTRUCTION IS TO BE CARRIED ON IN ACCORDANCE WITH THESE PLANS AND THE STANDARD SPECIFICATIONS FOR CONSTRUCTION DATED 2011, AS APPROVED BY THE FEDERAL HIGHWAY ADMINISTRATION ON JULY 20, 2011 FOR USE ON THIS PROJECT, INCLUDING ALL SUBSEQUENT REVISIONS AND SUCH REVISED SPECIFICATIONS AND SPECIAL PROVISIONS AS ARE INCORPORATED IN THESE PLANS.

QUALITY ASSURANCE PROGRAM : LEVEL 3	
SURVEYED BY :	2011
SURVEYED DATE :	
DATUM	NAVD 88
VERTICAL	NAD 83 CORS
HORIZONTAL	COMPASS



DIRECTOR OF PROJECT DELIVERY	
APPROVED	DATE 4/27/2015
PROJECT MANAGER : JONATHAN HARRINGTON, P. E.	
PROJECT NAME : BETHEL-RANDOLPH	
PROJECT NUMBER : STP 2921 (1)	
SHEET 1 OF 211 SHEETS	

NOT TO SCALE

PLOTTED: 4/23/2015