

STONE FILL, TYPE J
 STA. 125+60 TO 126+30, RT
 STA. 127+50 TO 129+20, LT

RELOCATE MAILBOX, SINGLE SUPPORT
 STA. 126+53, LT
 STA. 130+78, LT
 STA. 130+80, LT

DURABLE 4 INCH WHITE LINE
 (ALL LINES WILL INCLUDE EDGE LINE BREAKS
 AND RADII FOR SIDE ROADS)
 STA. 125+50 TO 131+50, SOLID LT & RT

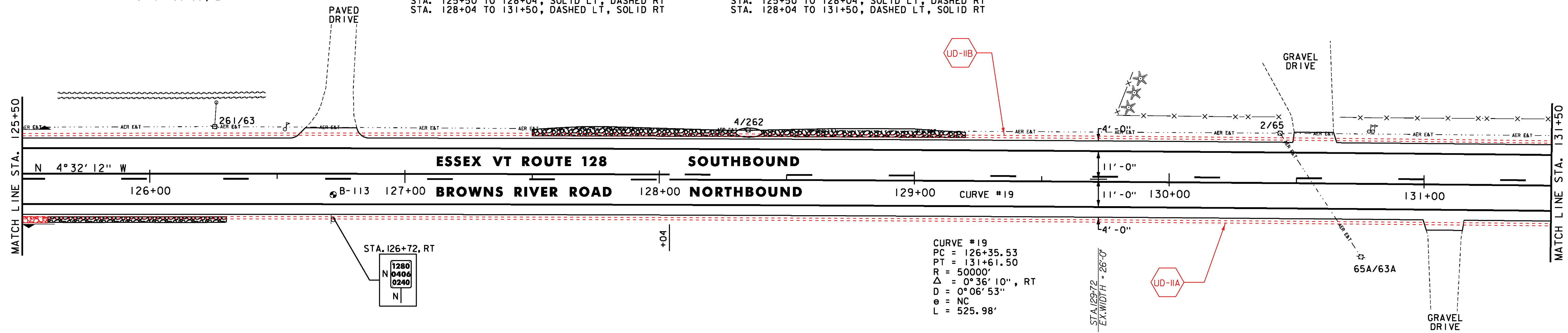
DURABLE 4 INCH YELLOW LINE
 (ALL LINES WILL INCLUDE ϕ BREAKS FOR SIDE ROADS)
 STA. 125+50 TO 128+04, SOLID LT, DASHED RT
 STA. 128+04 TO 131+50, DASHED LT, SOLID RT

TEMPORARY 4 INCH WHITE LINE, PAINT
 (ALL LINES WILL INCLUDE EDGE LINE BREAKS
 AND RADII FOR SIDE ROADS)
 STA. 125+50 TO 131+50, SOLID LT & RT

TEMPORARY 4 INCH YELLOW LINE, PAINT
 (ALL LINES WILL INCLUDE ϕ BREAKS FOR SIDE ROADS)
 STA. 125+50 TO 128+04, SOLID LT, DASHED RT
 STA. 128+04 TO 131+50, DASHED LT, SOLID RT

GEOTEXTILE UNDER STONE FILL
 STA. 125+60 TO 126+30, RT
 STA. 127+50 TO 129+20, LT

GRUBBING MATERIAL
 STA. 125+60 TO 126+30, RT
 STA. 127+50 TO 129+20, LT



SOIL BORING DATA			
BORING#	DEPTH (FT.)	PCC	COMMENTS
B-113	5.0'	NO	

STONE FILL, TYPE J
 STA. 133+90 TO 134+30, RT

RELOCATE MAILBOX, SINGLE SUPPORT
 STA. 132+40, RT
 STA. 134+85, LT

DURABLE 4 INCH WHITE LINE
 (ALL LINES WILL INCLUDE EDGE LINE BREAKS
 AND RADII FOR SIDE ROADS)
 STA. 131+50 TO 137+50, SOLID LT & RT

DURABLE 4 INCH YELLOW LINE
 (ALL LINES WILL INCLUDE ϕ BREAKS FOR SIDE ROADS)
 STA. 131+50 TO 135+17, DASHED LT, SOLID RT
 STA. 135+17 TO 137+50, SOLID LT, DASHED RT

TEMPORARY 4 INCH WHITE LINE, PAINT
 (ALL LINES WILL INCLUDE EDGE LINE BREAKS
 AND RADII FOR SIDE ROADS)
 STA. 131+50 TO 137+50, SOLID LT & RT

TEMPORARY 4 INCH YELLOW LINE, PAINT
 (ALL LINES WILL INCLUDE ϕ BREAKS FOR SIDE ROADS)
 STA. 131+50 TO 135+17, DASHED LT, SOLID RT
 STA. 135+17 TO 137+50, SOLID LT, DASHED RT

GEOTEXTILE UNDER STONE FILL
 STA. 133+90 TO 134+30, RT

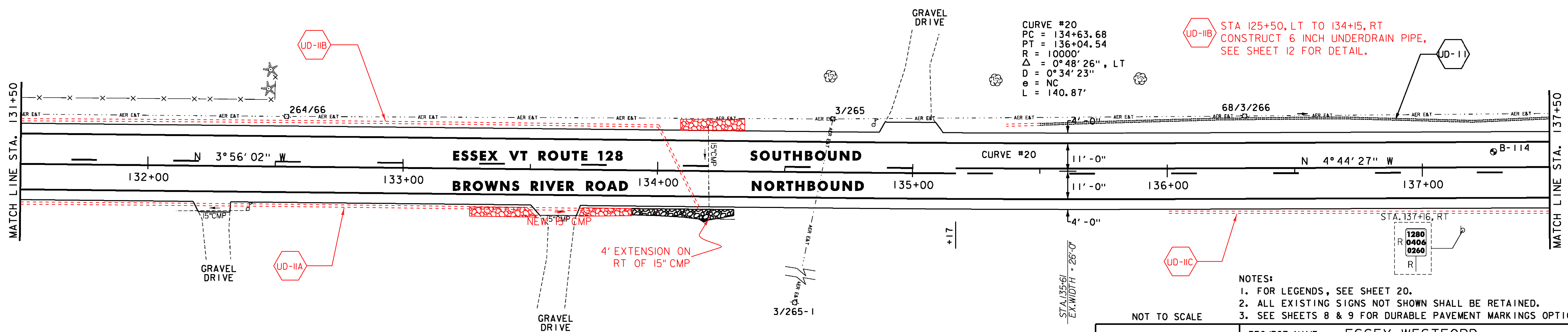
GRUBBING MATERIAL
 STA. 133+90 TO 134+30, RT

REMOVING SIGNS
 AS SHOWN - I

UD-I STA. 135+35 TO 140+10
 STA. 135+50 TO 140+00, LT
 CONSTRUCT 6 INCH UNDERDRAIN PIPE,
 SEE SHEET 12 FOR DETAIL AND
 ASSOCIATED QUANTITIES.

UD-IIA STA. 125+20, LT TO 134+00, RT
 CONSTRUCT 6 INCH UNDERDRAIN PIPE,
 SEE SHEET 12 FOR DETAIL.

UD-IIB STA. 125+50, LT TO 134+15, RT
 CONSTRUCT 6 INCH UNDERDRAIN PIPE,
 SEE SHEET 12 FOR DETAIL.



SOIL BORING DATA			
BORING#	DEPTH (FT.)	PCC	COMMENTS
B-114	5.0'	NO	



NOT TO SCALE

PROJECT LAYOUT SHEET #16

- NOTES:
- FOR LEGENDS, SEE SHEET 20.
 - ALL EXISTING SIGNS NOT SHOWN SHALL BE RETAINED.
 - SEE SHEETS 8 & 9 FOR DURABLE PAVEMENT MARKINGS OPTIONS.

PROJECT NAME: ESSEX-WESTFORD
 PROJECT NUMBER: STP 2912(I)

FILE NAME: p10c226.dgn
 PROJECT LEADER: JLL
 DESIGNED BY: STANTEC

PLOT DATE: 2/20/2013
 DRAWN BY: STANTEC
 CHECKED BY: STANTEC
 SHEET 35 OF 239