

STONE FILL, TYPE I
 STA. 92+50 TO 94+60, LT
 STA. 95+40 TO 95+64, RT

RELOCATE MAILBOX, SINGLE SUPPORT
 STA. 94+38, RT
 STA. 95+09, RT
 STA. 95+35, LT
 STA. 95+37, LT
 STA. 96+94, RT
 STA. 96+95, RT

DURABLE 4 INCH WHITE LINE
 (ALL LINES WILL INCLUDE EDGE LINE BREAKS AND RADII FOR SIDE ROADS)
 STA. 92+50 TO 97+50, SOLID LT & RT

DURABLE 4 INCH YELLOW LINE
 (ALL LINES WILL INCLUDE \odot BREAKS FOR SIDE ROADS)
 STA. 92+50 TO 92+93, DASHED \odot
 STA. 92+93 TO 97+50, DASHED LT, SOLID RT

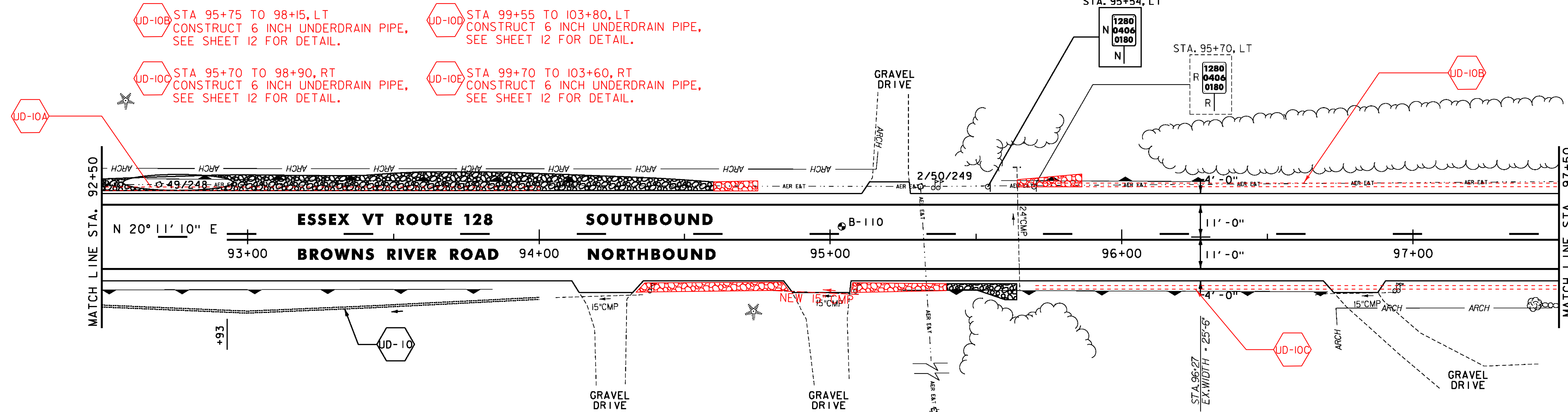
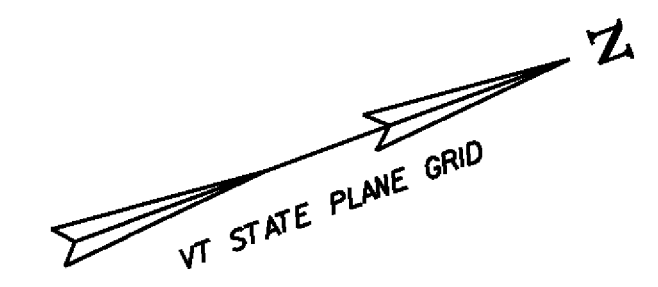
TEMPORARY 4 INCH WHITE LINE, PAINT
 (ALL LINES WILL INCLUDE EDGE LINE BREAKS AND RADII FOR SIDE ROADS)
 STA. 92+50 TO 97+50, SOLID LT & RT

TEMPORARY 4 INCH YELLOW LINE, PAINT
 (ALL LINES WILL INCLUDE \odot BREAKS FOR SIDE ROADS)
 STA. 92+50 TO 92+93, DASHED \odot
 STA. 92+93 TO 97+50, DASHED LT, SOLID RT

GEOTEXTILE UNDER STONE FILL
 STA. 92+50 TO 94+60, LT
 STA. 95+40 TO 95+64, RT

REMOVING SIGNS
 AS SHOWN - 1

GRUBBING MATERIAL
 STA. 92+50 TO 94+60, LT
 STA. 95+40 TO 95+64, RT



STONE FILL, TYPE I
 STA. 100+50 TO 100+70, LT
 STA. 102+00 TO 103+50, RT

RELOCATE MAILBOX, SINGLE SUPPORT
 STA. 98+12, LT
 STA. 101+08, LT
 STA. 101+10, LT

DURABLE 4 INCH WHITE LINE
 (ALL LINES WILL INCLUDE EDGE LINE BREAKS AND RADII FOR SIDE ROADS)
 STA. 97+50 TO 103+50, SOLID LT & RT

DURABLE 4 INCH YELLOW LINE
 (ALL LINES WILL INCLUDE \odot BREAKS FOR SIDE ROADS)
 STA. 97+50 TO 99+00, DASHED LT, SOLID RT
 STA. 99+00 TO 103+50, SOLID LT & RT

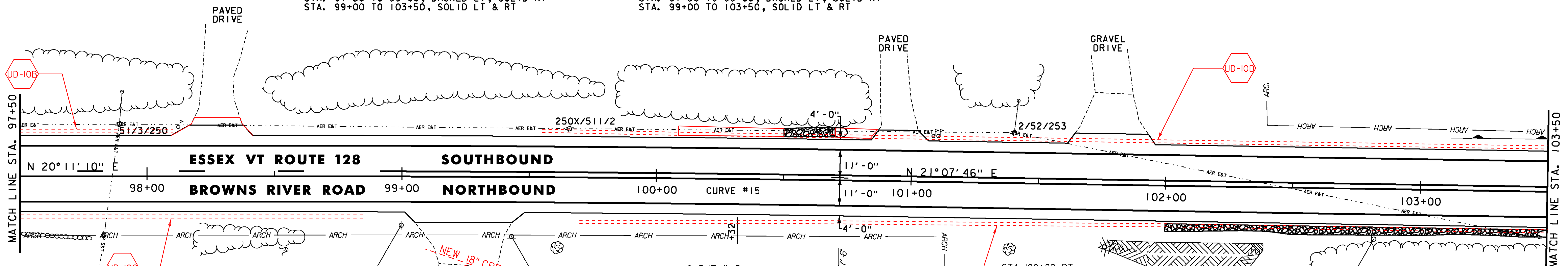
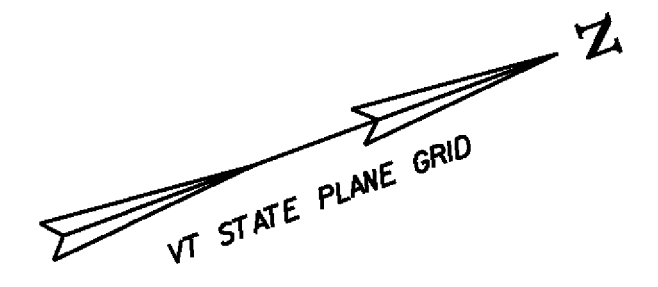
TEMPORARY 4 INCH WHITE LINE, PAINT
 (ALL LINES WILL INCLUDE EDGE LINE BREAKS AND RADII FOR SIDE ROADS)
 STA. 97+50 TO 103+50, SOLID LT & RT

TEMPORARY 4 INCH YELLOW LINE, PAINT
 (ALL LINES WILL INCLUDE \odot BREAKS FOR SIDE ROADS)
 STA. 97+50 TO 99+00, DASHED LT, SOLID RT
 STA. 99+00 TO 103+50, SOLID LT & RT

GEOTEXTILE UNDER STONE FILL
 STA. 100+50 TO 100+70, LT
 STA. 102+00 TO 103+50, RT

REMOVING SIGNS
 AS SHOWN - 2

GRUBBING MATERIAL
 STA. 100+50 TO 100+70, LT
 STA. 102+00 TO 103+50, RT



ATTACHED TO STRUCTURE

STA. 99+00, RT
 RET WEST SLEEPY HOLLOW RD
 RET

WEST SLEEPY HOLLOW ROAD
 (TH-60)
 MM 1.880 = STA. 99+24
 (GRAVEL)

STA. 99+43, RT
 RET STOP
 RET

CURVE #15
 PC = 98+51.48
 PT = 100+98.47
 R = 15000'
 Δ = 0°56'36"
 D = 0°22'55"
 e = NC
 L = 246.98'

STA. 102+82, RT
 R 35 M.P.H.
 R

- NOTES:
- FOR LEGENDS, SEE SHEET 20.
 - ALL EXISTING SIGNS NOT SHOWN SHALL BE RETAINED.
 - SEE SHEETS 8 & 9 FOR DURABLE PAVEMENT MARKINGS OPTIONS.

NOT TO SCALE

PROJECT LAYOUT SHEET #12



PROJECT NAME: ESSEX-WESTFORD
 PROJECT NUMBER: STP 2912(I)

FILE NAME: p10c226.dgn
 PROJECT LEADER: JLL
 DESIGNED BY: STANTEC
 IPARM FILE: p10c226112.i

PLOT DATE: 2/20/2013
 DRAWN BY: STANTEC
 CHECKED BY: STANTEC
 SHEET 31 OF 239