

RELOCATE MAILBOX, MULTIPLE SUPPORT
 STA. 35+76, RT

PORTLAND CEMENT CONCRETE SIDEWALK, 5 INCH
 STA. 37+36, RT
 STA. 37+44, LT

DETECTABLE WARNING SURFACE
 STA. 37+36, RT
 STA. 37+44, LT

DURABLE 4 INCH WHITE LINE
 (ALL LINES WILL INCLUDE EDGE LINE BREAKS
 AND RADII FOR SIDE ROADS)
 STA. 33+00 TO 38+50, SOLID LT & RT
 STA. 37+63, SOLID RT (EDGELINES, IRENE AVENUE TH-798)

DURABLE 4 INCH YELLOW LINE
 (ALL LINES WILL INCLUDE ϕ BREAKS FOR SIDE ROADS)
 STA. 33+00 TO 38+50, SOLID LT & RT
 STA. 33+47, DOUBLE SOLID LT (THOMAS LANE TH-773)
 STA. 37+63, DOUBLE SOLID RT (IRENE AVENUE TH-798)

DURABLE 8 INCH WHITE LINE
 STA. 34+15, LT (HYDRANT)
 SEE DETAIL SHEET 18

DURABLE 24 INCH STOP BAR
 STA. 33+47, LT (THOMAS LANE TH-773)
 STA. 37+63, RT (IRENE AVENUE TH-798)

DURABLE LETTER OR SYMBOL
 STA. 33+47, LT (THOMAS LANE TH-773) "STOP"
 STA. 37+63, RT (IRENE AVENUE TH-798) "STOP"

TEMPORARY 4 INCH WHITE LINE, PAINT
 (ALL LINES WILL INCLUDE EDGE LINE BREAKS
 AND RADII FOR SIDE ROADS)
 STA. 33+00 TO 38+50, SOLID LT & RT
 STA. 37+63, SOLID RT (EDGELINES, IRENE AVENUE TH-798)

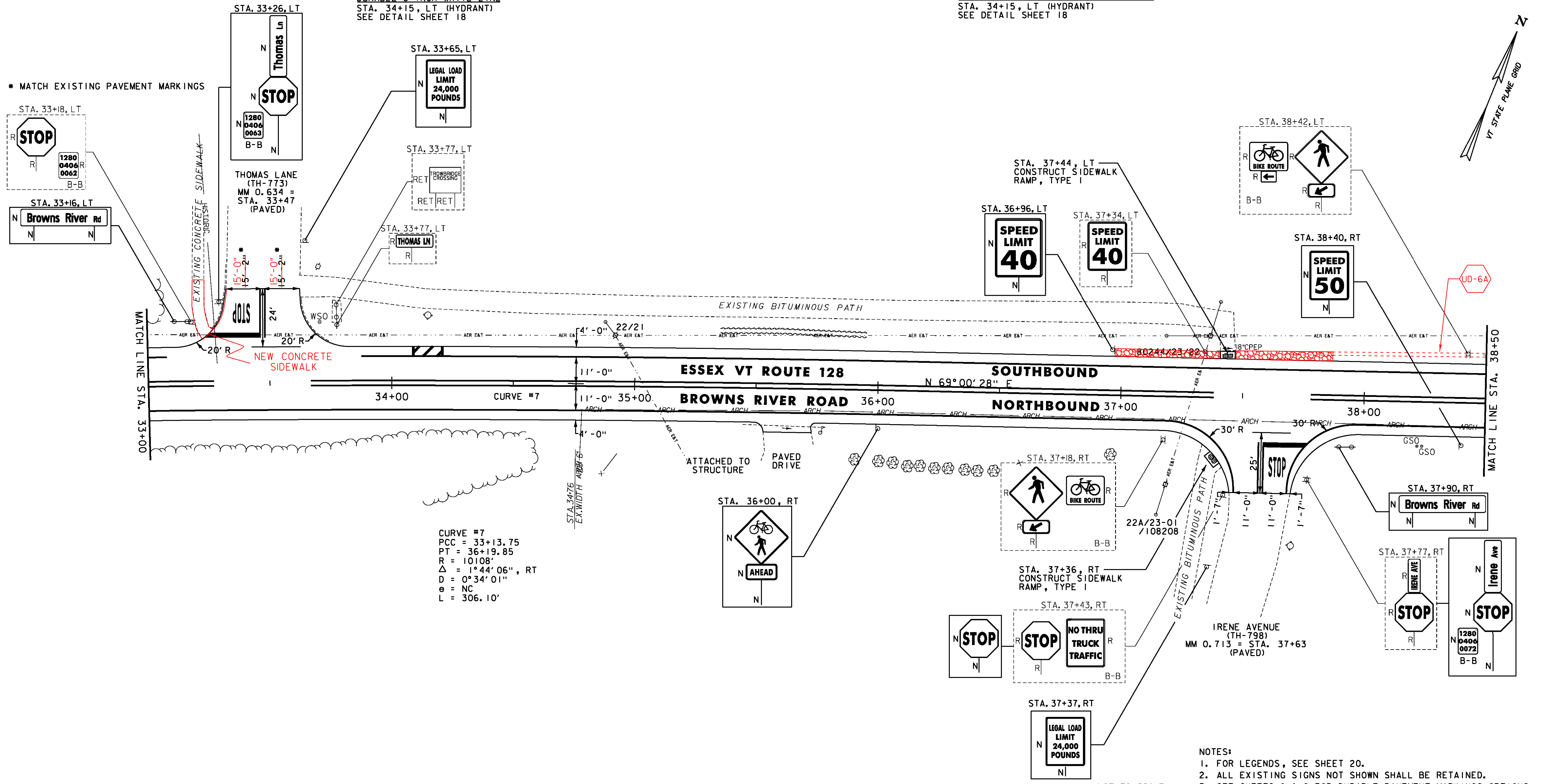
TEMPORARY 4 INCH YELLOW LINE, PAINT
 (ALL LINES WILL INCLUDE ϕ BREAKS FOR SIDE ROADS)
 STA. 33+00 TO 38+50, SOLID LT & RT
 STA. 33+47, DOUBLE SOLID LT (THOMAS LANE TH-773)
 STA. 37+63, DOUBLE SOLID RT (IRENE AVENUE TH-798)

TEMPORARY 8 INCH WHITE LINE, PAINT
 STA. 34+15, LT (HYDRANT)
 SEE DETAIL SHEET 18

TEMPORARY 24 INCH STOP BAR, PAINT
 STA. 33+47, LT (THOMAS LANE TH-773)
 STA. 37+63, RT (IRENE AVENUE TH-798)

TEMPORARY LETTER OR SYMBOL, PAINT
 STA. 33+47, LT (THOMAS LANE TH-773) "STOP"
 STA. 37+63, RT (IRENE AVENUE TH-798) "STOP"

REMOVING SIGNS
 AS SHOWN - 15



CURVE #7
 PCC = 33+13.75
 PT = 36+19.85
 R = 10108'
 Δ = 1°44'06", RT
 D = 0°34'01"
 e = NC
 L = 306.10'

- NOTES:
 1. FOR LEGENDS, SEE SHEET 20.
 2. ALL EXISTING SIGNS NOT SHOWN SHALL BE RETAINED.
 3. SEE SHEETS 8 & 9 FOR DURABLE PAVEMENT MARKINGS OPTIONS.

NOT TO SCALE

PROJECT LAYOUT SHEET #5



PROJECT NAME: ESSEX-WESTFORD	PLOT DATE: 2/20/2013
PROJECT NUMBER: STP 2912(I)	DRAWN BY: STANTEC
FILE NAME: p10c226.dgn	CHECKED BY: STANTEC
DESIGNED BY: STANTEC	SHEET 24 OF 239
IPARM FILE: p10c226i05.i	