

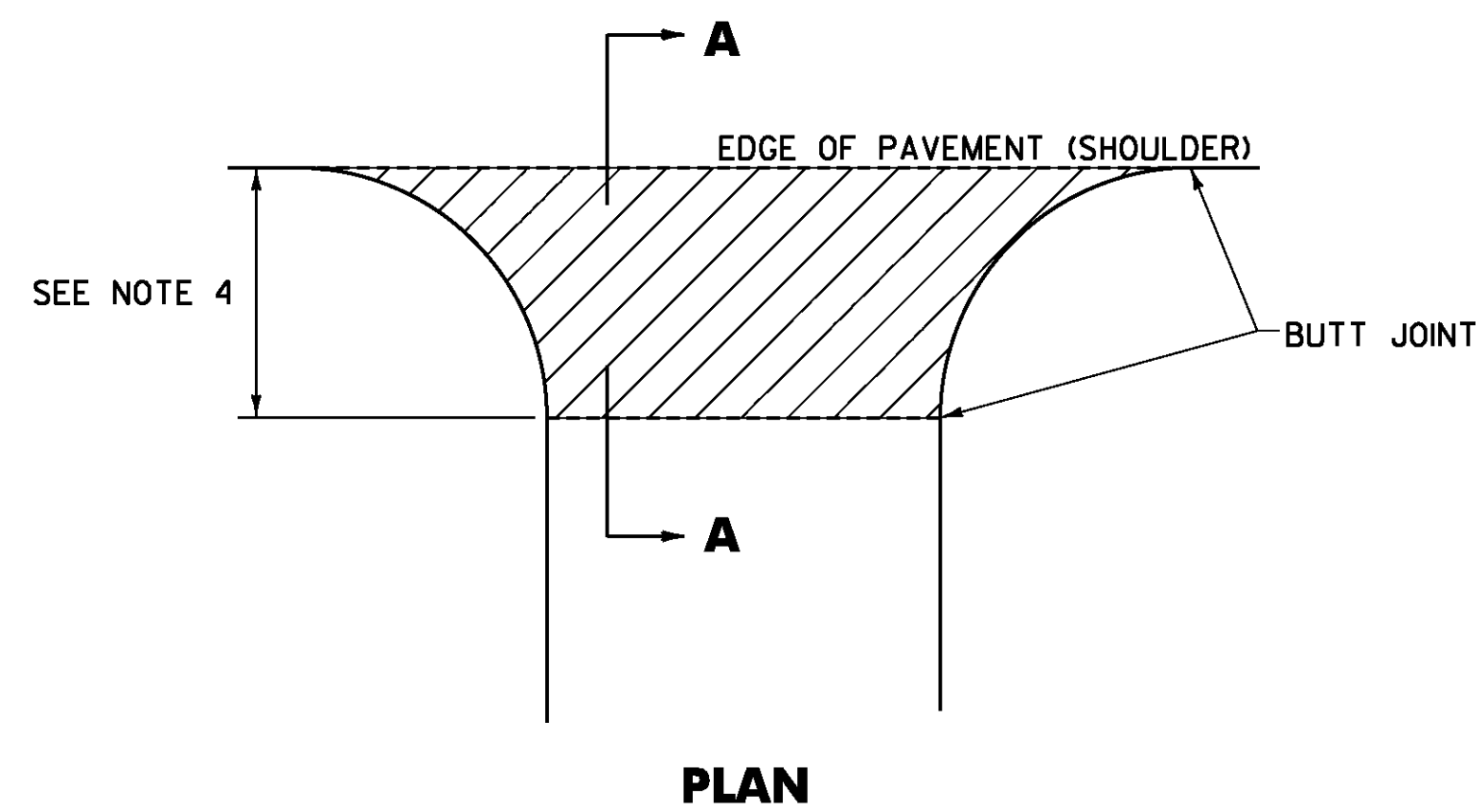
STATION	POSITION	QUANTITY (SY)
VT ROUTE 128		
ESSEX		
1+13	LT	14
2+26	RT	15
3+23	LT	11
7+22	RT	8
7+57	RT	10
8+83	LT	24
9+29	RT	18
11+46	LT	18
11+52	RT	9
18+77	RT	10
20+23	RT	13
21+27	RT	20
27+50	LT	12
28+02	LT	11
32+79	LT	5
35+63	RT	10
40+47	LT	9
48+11	RT	23
49+65	RT	14
53+30	RT	8
58+26	RT	5
58+41	LT	6
58+79	RT	6
59+37	RT	9
60+32	LT	8
61+20	LT	11
62+00	LT	8
62+30	RT	10
<b>SUBTOTAL</b>		<b>325</b>

STATION	POSITION	QUANTITY (SY)
VT ROUTE 128		
ESSEX (CONT.)		
64+53	RT	15
67+98	LT	12
67+98	RT	5
69+72	LT	10
71+77	LT	11
72+88	RT	7
75+06	LT	9
76+52	LT	8
79+24	RT	7
80+24	LT	12
81+39	LT	10
85+00	LT	10
87+47	LT	12
88+45	RT	10
92+29	LT	8
94+24	RT	10
94+98	RT	10
95+20	LT	7
96+81	RT	8
98+27	LT	12
99+26	RT	19
100+95	LT	8
101+80	LT	14
105+86	LT	15
106+28	RT	28
107+24	RT	9
111+69	LT	7
112+41	RT	14
<b>SUBTOTAL</b>		<b>307</b>

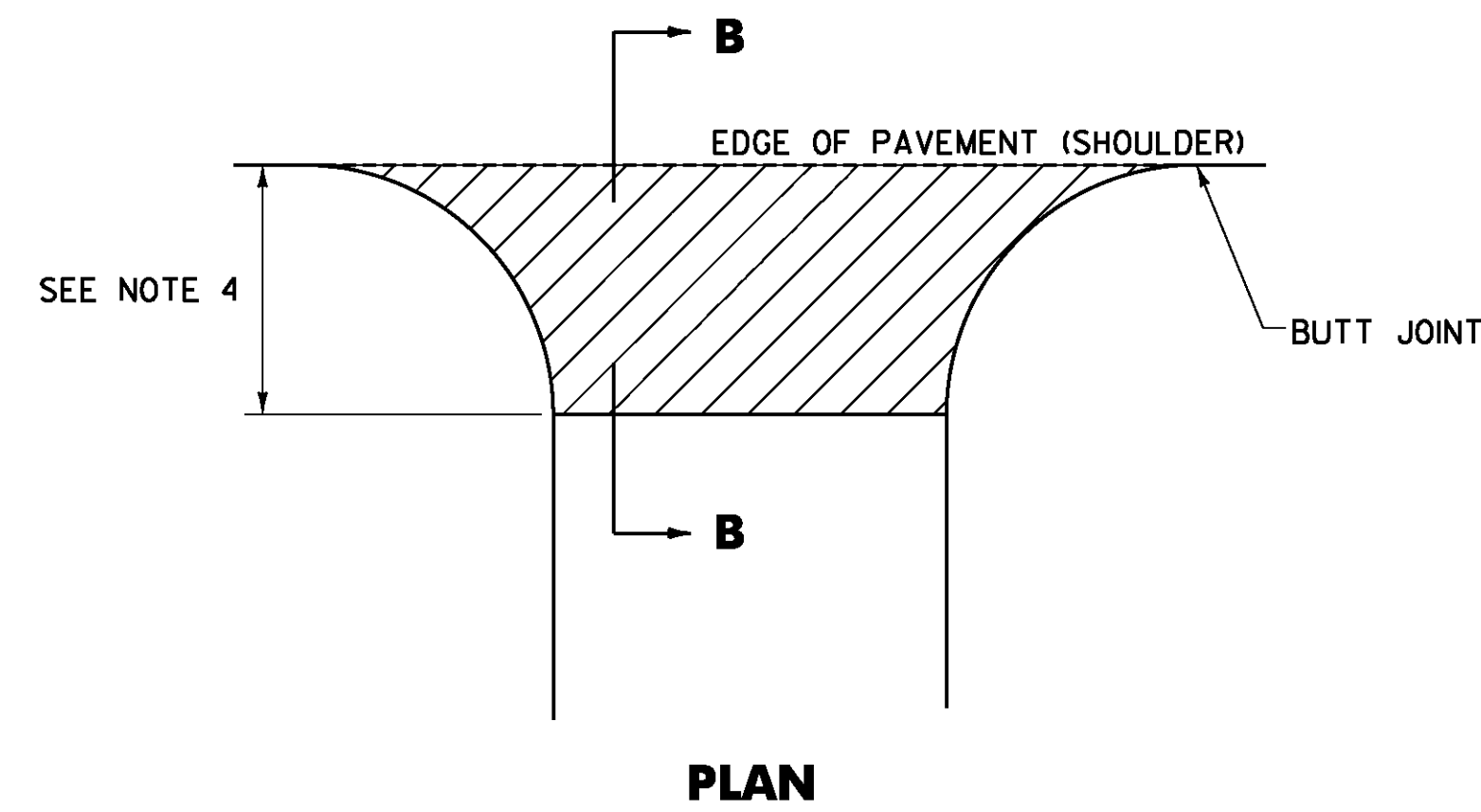
STATION	POSITION	QUANTITY (SY)
VT ROUTE 128		
ESSEX (CONT.)		
113+06	LT	20
122+00	RT	19
126+72	LT	11
130+56	LT	7
131+08	RT	7
132+27	RT	6
133+62	RT	8
134+99	LT	10
141+43	RT	9
147+47	RT	5
148+82	LT	6
151+08	RT	4
153+84	RT	12
154+05	LT	53
157+83	RT	9
160+90	RT	9
161+23	LT	11
164+14	LT	6
169+74	RT	14
174+69	LT	14
175+96	LT	12
180+32	RT	16
188+41	LT	15
206+01	RT	6
207+59	RT	13
208+79	LT	3
216+69	LT	8
<b>SUBTOTAL</b>		<b>313</b>

STATION	POSITION	QUANTITY (SY)
VT ROUTE 128		
ESSEX (CONT.)		
217+51	LT	7
218+88	LT	6
218+96	RT	11
220+44	LT	6
221+05	RT	9
221+51	LT	10
228+86	RT	11
<b>SUBTOTAL</b>		<b>60</b>

STATION	POSITION	QUANTITY (SY)
VT ROUTE 128		
WESTFORD		
0+22	RT	5
1+61	RT	10
3+87	RT	8
4+92	RT	8
6+00	LT	6
6+66	RT	14
8+53	RT	14
9+83	LT	10
12+68	RT	17
31+00	LT	91
32+50	RT	21
32+60	LT	25
39+48	LT	8
39+51	RT	4
46+36	LT	3
46+36	RT	3
50+99	RT	9
56+96	LT	11
58+45	RT	3
66+96	LT	8
67+40	RT	3
<b>SUBTOTAL</b>		<b>281</b>
COLUMN 1		325
COLUMN 2		307
COLUMN 3		313
COLUMN 4		60
COLUMN 5		281
<b>SUBTOTAL</b>		<b>1286</b>
ROUNDING		14
<b>TOTAL</b>		<b>1300</b>



**SECTION A-A**  
**HANDWORK DETAILS FOR PAVED DRIVES**



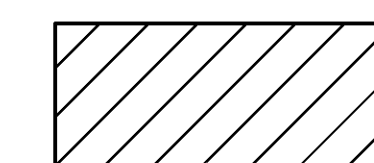
**SECTION B-B**  
**HANDWORK DETAILS FOR GRAVEL DRIVES**

FILL MATERIAL AS DIRECTED BY THE ENGINEER, INCLUDED IN THE UNIT PRICE BID FOR ITEM 900.675 SPECIAL PROVISION (HAND-PLACED BITUMINOUS CONCRETE MATERIAL, DRIVES)

**NOTES:**

- PAVING LIFT SHALL BE A MINIMUM OF 1 1/2" AND A MAXIMUM OF 2".
- THE COST OF PROVIDING AND PLACING SUBBASE MATERIAL, CLEANING EXISTING PAVED SURFACES, INCLUDING POWER EQUIPMENT, FOR PROVIDING AND APPLYING EMULSION, FILLING JOINTS, CRACKS AND HOLES WILL NOT BE PAID DIRECTLY BUT WILL BE INCLUDED IN THE UNIT PRICE BID FOR ITEM 900.675 SPECIAL PROVISION (HAND-PLACED BITUMINOUS CONCRETE MATERIAL, DRIVES).
- EXCAVATION NEEDED TO ACHIEVE PROPER DRIVE SLOPES WILL NOT BE PAID DIRECTLY BUT WILL BE INCLUDED IN THE UNIT PRICE BID FOR ITEM 900.675 SPECIAL PROVISION (HAND-PLACED BITUMINOUS CONCRETE MATERIAL, DRIVES).
- FIELD DRIVES 2'-0"; RESIDENTIAL AND COMMERCIAL DRIVES 4'-0"; OR AS DIRECTED BY THE ENGINEER.

**LEGEND**



ITEM 900.675 SPECIAL PROVISION (HAND-PLACED BITUMINOUS CONCRETE MATERIAL, DRIVES)

NOT TO SCALE

**DRIVE  
DETAIL  
SHEET**

PROJECT NAME: ESSEX-WESTFORD  
PROJECT NUMBER: STP 2912(I)

FILE NAME: p10c226.dgn  
PROJECT LEADER: JLL  
DESIGNED BY: STANTEC  
IPARM FILE: p10c226ds01.i

PLOT DATE: 2/20/2013  
DRAWN BY: STANTEC  
CHECKED BY: STANTEC  
SHEET 13 OF 239

