

LANG

DIRECTION	ACTUAL GRID POINTS		PROJECT SPECIFIC COORDINATE POINTS
	ENGLISH		
N	731743.240 FT		
E	1486466.540 FT		
Z			

GENERAL LOCATION, ESSEX, VT., 1.5 MI (2.4 KM) NORTHEAST OF ESSEX JUNCTION.

TO REACH FROM THE 5-CORNERS INTERSECTION OF VT ROUTES 15, 117, AND 2A IN ESSEX JUNCTION GO NORTHEAST ALONG VT ROUTE 15 FOR 1.5 MI (2.4 KM) TO THE MARK ON THE RIGHT.

THE MARK IS SET IN THE TOP OF THE EAST END OF A LEDGE CUT.

IT IS 0.1 MI (0.2 KM) WEST OF THE VT ROUTE 15 BRIDGE OVER ROUTE 289. THE MARK IS 18.6 M (61.0 FT) SOUTH OF AND ABOUT 5 M (16.4 FT) HIGHER THAN THE CENTERLINE OF VT ROUTE 15, 17.8 M (58.4 FT) WEST-NORTHWEST OF THE NORTHWEST CORNER OF A ONE STORY HOUSE, 5.1 M (16.7 FT) SOUTH OF THE NORTH EDGE OF THE LEDGE CUT, 8.3 M (27.2 FT) SOUTH-SOUTHEAST OF POLE NO. 57/54, AND 8.3 M (27.2 FT) WEST OF A FIBERGLASS WITNESS POST AND POLE NO. 57-01/53A.

DESCRIPTIONS PROVIDED BY VERMONT AGENCY OF TRANSPORTATION GEODETIC SURVEY UNIT.

AE372I

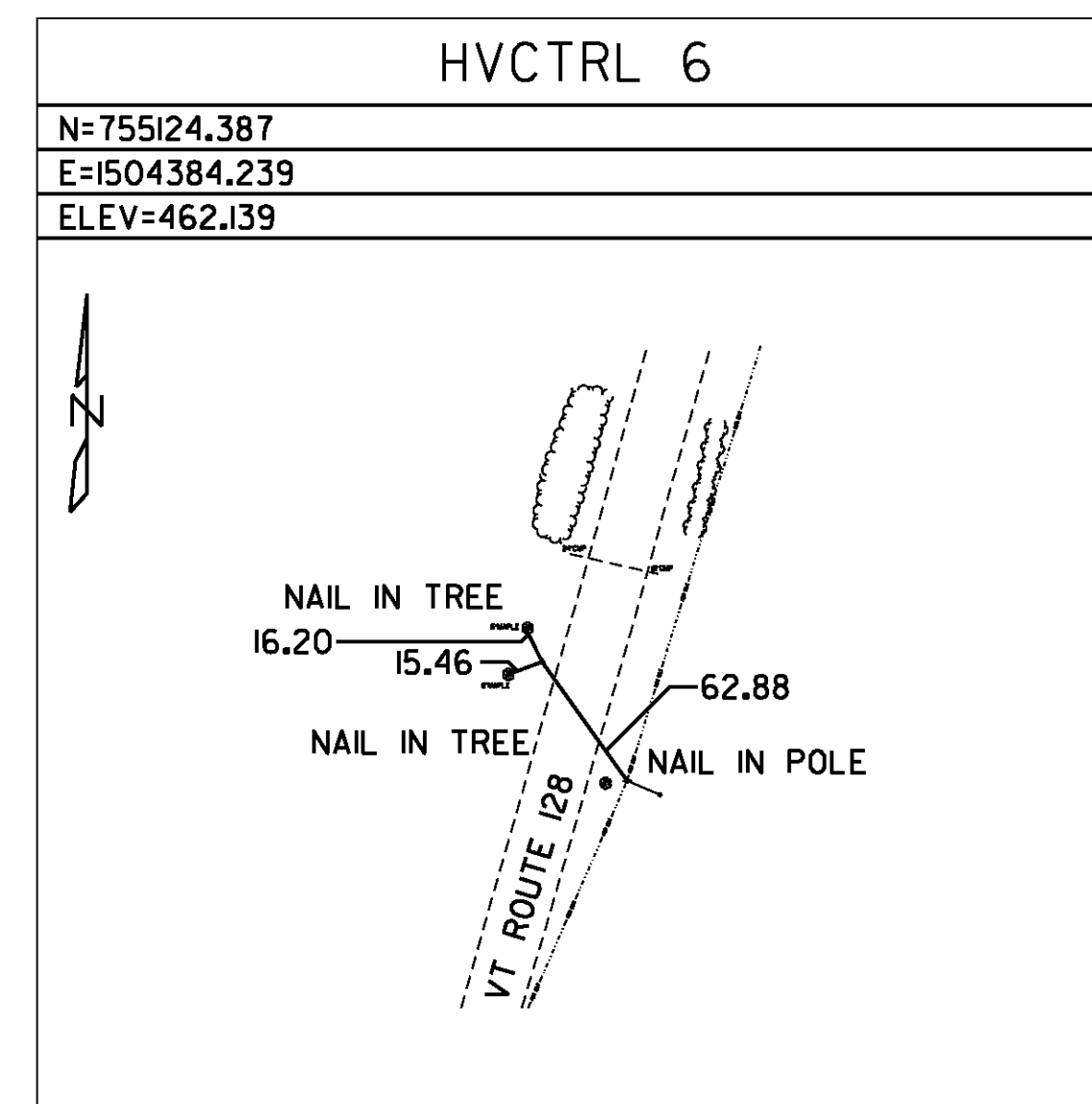
DIRECTION	ACTUAL GRID POINTS		PROJECT SPECIFIC COORDINATE POINTS
	METRIC	ENGLISH	
N	224363.203 M	736098.28 FT	
E	455905.026 M	1495748.41 FT	
Z	189.11 M	620.4 FT	

GENERAL LOCATION, ESSEX CENTER, VT. OWNERSHIP, DOUG AND MARY BETH MAGNANT, 43 BIXBY HILL ROAD, ESSEX JUNCTION, VT 05452.

TO REACH FROM THE INTERSECTION OF VT ROUTES 128 NORTH AND 15 IN ESSEX CENTER GO EAST ALONG VT ROUTE 128 NORTH FOR 0.1 MI (0.2 KM) TO THE INTERSECTION OF BIXBY HILL ROAD AT A CROSSROADS. TURN LEFT AND GO NORTH-NORTHEAST ALONG BIXBY HILL ROAD FOR 0.45 MI (0.72 KM) TO THE CREST OF A HILL AND THE MARK ON THE LEFT, ABOUT 74 M (242.8 FT) NORTHWEST OF AND ACROSS THE ROAD FROM THE NORTHWEST CORNER OF THE 2 STORY HOUSE OF MAGNANT.

THE MARK IS A U.S. CORPS OF ENGINEERS ARMY MAP SERVICE DISK SET IN THE NORTH END OF A MASSIVE ROCK OUTCROP.

IT IS 35.3 M (115.8 FT) WEST OF AND ABOUT 10 M (32.8 FT) HIGHER THAN THE CENTERLINE OF BIXBY HILL ROAD, 19.7 M (64.6 FT) EAST OF THE SOUTHEAST CORNER OF A CHAIN LINK FENCE SURROUNDING A MUNICIPAL WATER TANK, 12.0 M (39.4 FT) WEST OF THE WEST FACE OF A LARGE PIECE OF DETACHED LEDGE WHICH PROJECTS ABOUT 2.0 M, (6.6 FT) AND 6.6 M (21.7 FT) SOUTHWEST OF A FIBERGLASS WITNESS POST.



NOT TO SCALE

NOTE: ALL DIMENSIONS ARE IN FEET UNLESS NOTED OTHERWISE.

**PROJECT
TIE
SHEET #2**

PROJECT NAME: ESSEX-WESTFORD
PROJECT NUMBER: STP 2912(I)

FILE NAME: p10c226.dgn
PROJECT LEADER: JLL
DESIGNED BY: STANTEC
IPARM FILE: p10c226ct02.i

PLOT DATE: 2/20/2013
DRAWN BY: STANTEC
CHECKED BY: STANTEC
SHEET 3 OF 239

