

RONALD PERRY

DIRECTION	ACTUAL GRID POINTS		PROJECT SPECIFIC COORDINATE POINTS
	ENGLISH		
N	759471.920 FT		
E	1505360.836 FT		
Z	411.724 FT		

GENERAL LOCATION, WESTFORD, VT. OWNERSHIP, RONALD PERRY, 1292 VT ROUTE 128, WESTFORD VT 05494.

TO REACH FROM THE INTERSECTION OF TOWERS ROAD, VT ROUTE 15 AND VT ROUTE 128 (BROWNS RIVER ROAD) IN ESSEX CENTER GO NORTHEAST ALONG VT ROUTE 128 FOR 6.0 MI (9.7 KM) TO THE SITE OF THE MARK ON THE LEFT IN A FIELD, ABOUT 100 M (328.1 FT) SOUTH OF A FIELD DRIVE ACCESS.

THE MARK IS SET FLUSH WITH THE GROUND SURFACE IN THE TOP OF A 3.0 M (9.8 FT) X 0.4 M (1.3 FT) ROCK OUTCROP.

IT IS 90.4 M (296.6 FT) NORTHWEST OF AND ABOUT 2 M (6.6 FT) LOWER THAN THE CENTERLINE OF BROWNS RIVER ROAD, 81.3 M (266.7 FT) EAST-SOUTHEAST OF A 70 CM (28 INCH) WHITE PINE, 20.2 M (66.3 FT) SOUTHWEST OF THE PEAK OF A 10.5 M (34.4 FT) X 4.0 M (13.1 FT) ROCK OUTCROP WHICH PROJECTS ABOUT 1.0 M (3.3 FT) ABOVE GROUND SURFACE, 103.6 M (339.9 FT) SOUTHWEST OF THE CENTERLINE OF THE FIELD DRIVE AND 61.9 M (203.1 FT) NORTH OF A 45 CM (18 INCH) MAPLE AND A FIBERGLASS WITNESS POST.

DESCRIPTIONS PROVIDED BY VERMONT AGENCY OF TRANSPORTATION GEODETIC SURVEY UNIT.

CLOW

DIRECTION	ACTUAL GRID POINTS		PROJECT SPECIFIC COORDINATE POINTS
	ENGLISH		
N	744165.105 FT		744165.105 FT
E	1501944.440 FT		1501944.440 FT
Z	410.902 FT		410.902 FT

GENERAL LOCATION, ESSEX, VT. OWNERSHIP, DAVID CLOW, 305 BROWNS RIVER ROAD, ESSEX JUNCTION, VT 05452.

TO REACH FROM THE INTERSECTION OF TOWERS ROAD, VT ROUTE 15 AND VT ROUTE 128 (BROWNS RIVER ROAD) IN ESSEX CENTER GO NORTHEAST ALONG VT ROUTE 128 FOR 2.9 MI (4.7 KM) TO THE INTERSECTION OF A GRAVEL DRIVE RIGHT. TURN RIGHT AND GO EAST AND THEN NORTH ALONG THE DRIVE FOR 0.1 MI (0.2 KM) (PASSING A TRAILER HOME ON THE LEFT) TO THE CLOW RESIDENCE ON THE LEFT AND THE SITE OF THE MARK ON THE RIGHT.

THE MARK IS SET IN THE WEST END OF A MASSIVE ROCK OUTCROP.

IT IS 11.3 M (37.1 FT) EAST OF AND ABOUT 2 M (6.6 FT) HIGHER THAN THE CENTERLINE OF THE NOW-PAVED DRIVE, 26.0 M (85.3 FT) SOUTHWEST OF THE SOUTHWEST CORNER OF THE HOUSE, 22.9 M (75.1 FT) SOUTH-SOUTHWEST OF THE SOUTHEAST CORNER OF THE HOUSE, 26.9 M (88.3 FT) SOUTH OF A WELL AND 4.4 M (14.4 FT) SOUTH OF A FIBERGLASS WITNESS POST.

EVANS

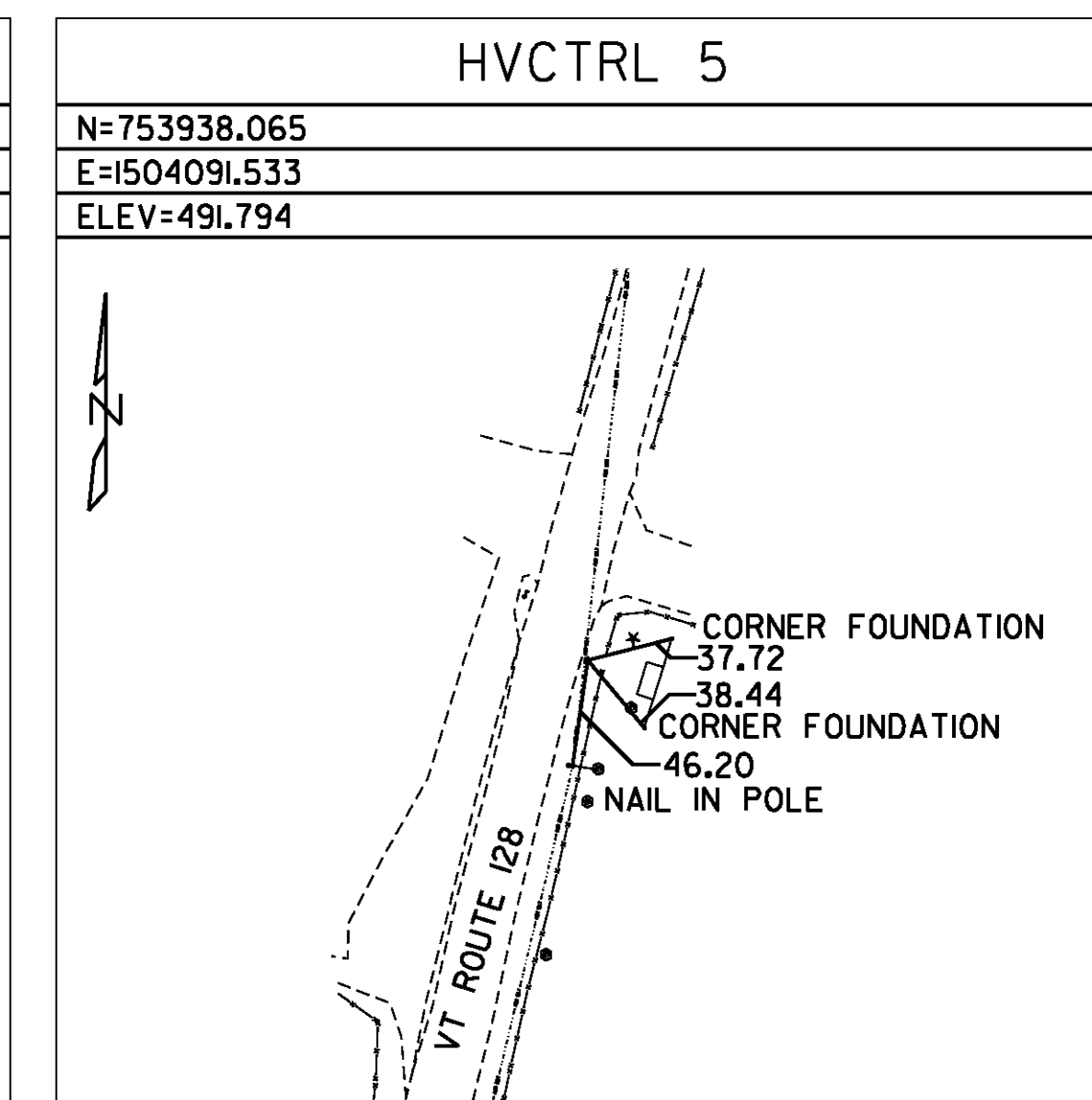
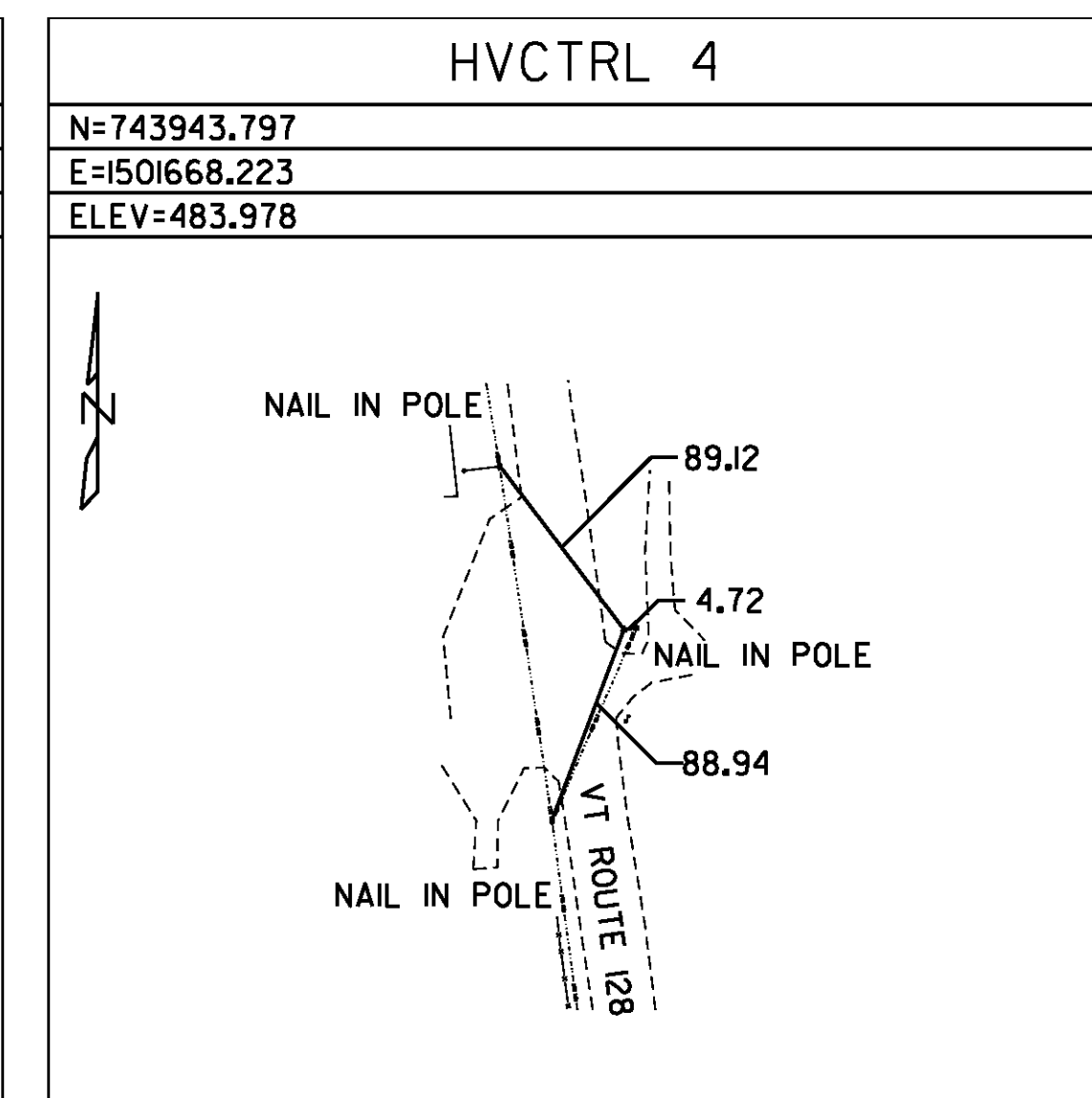
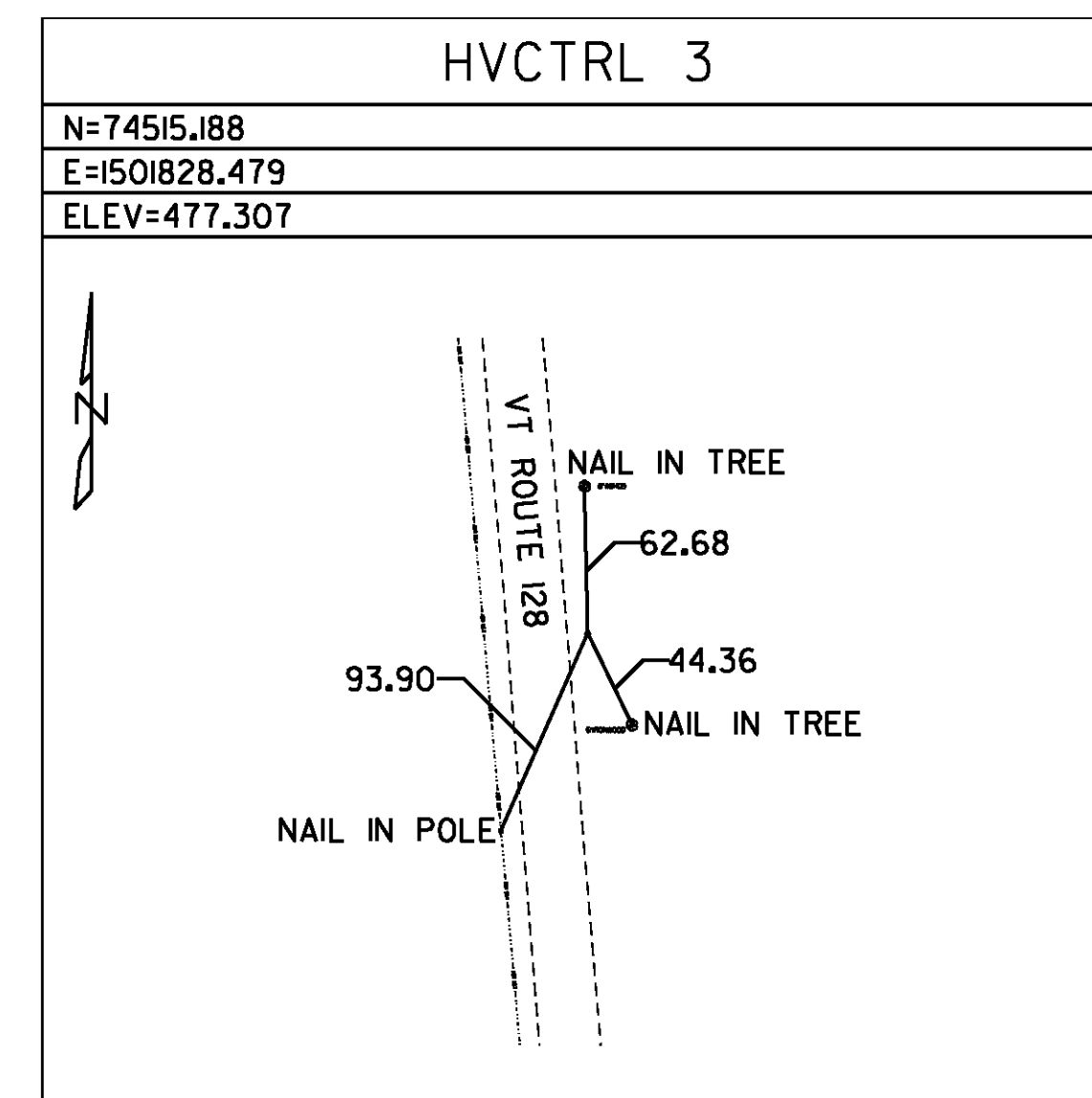
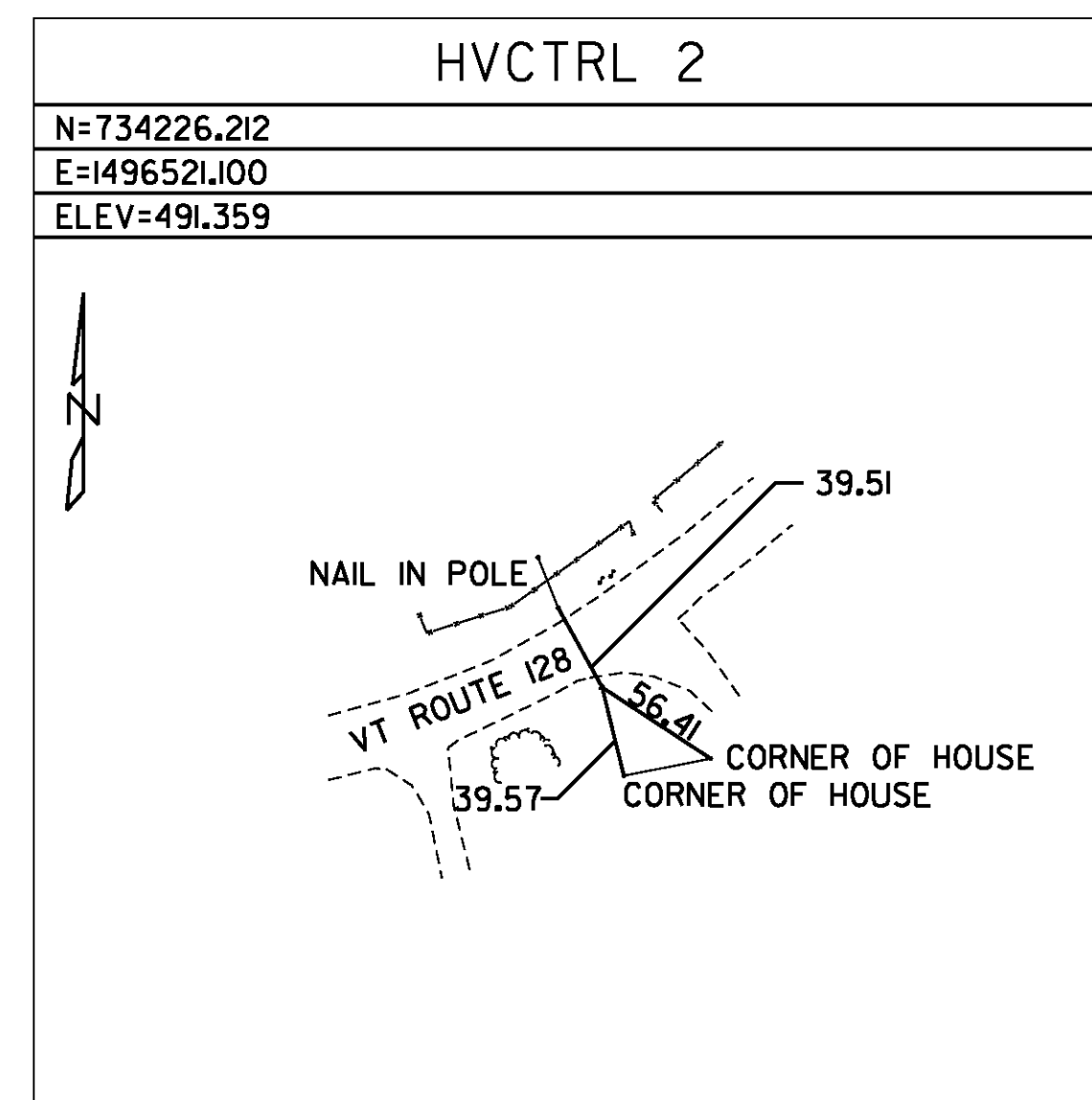
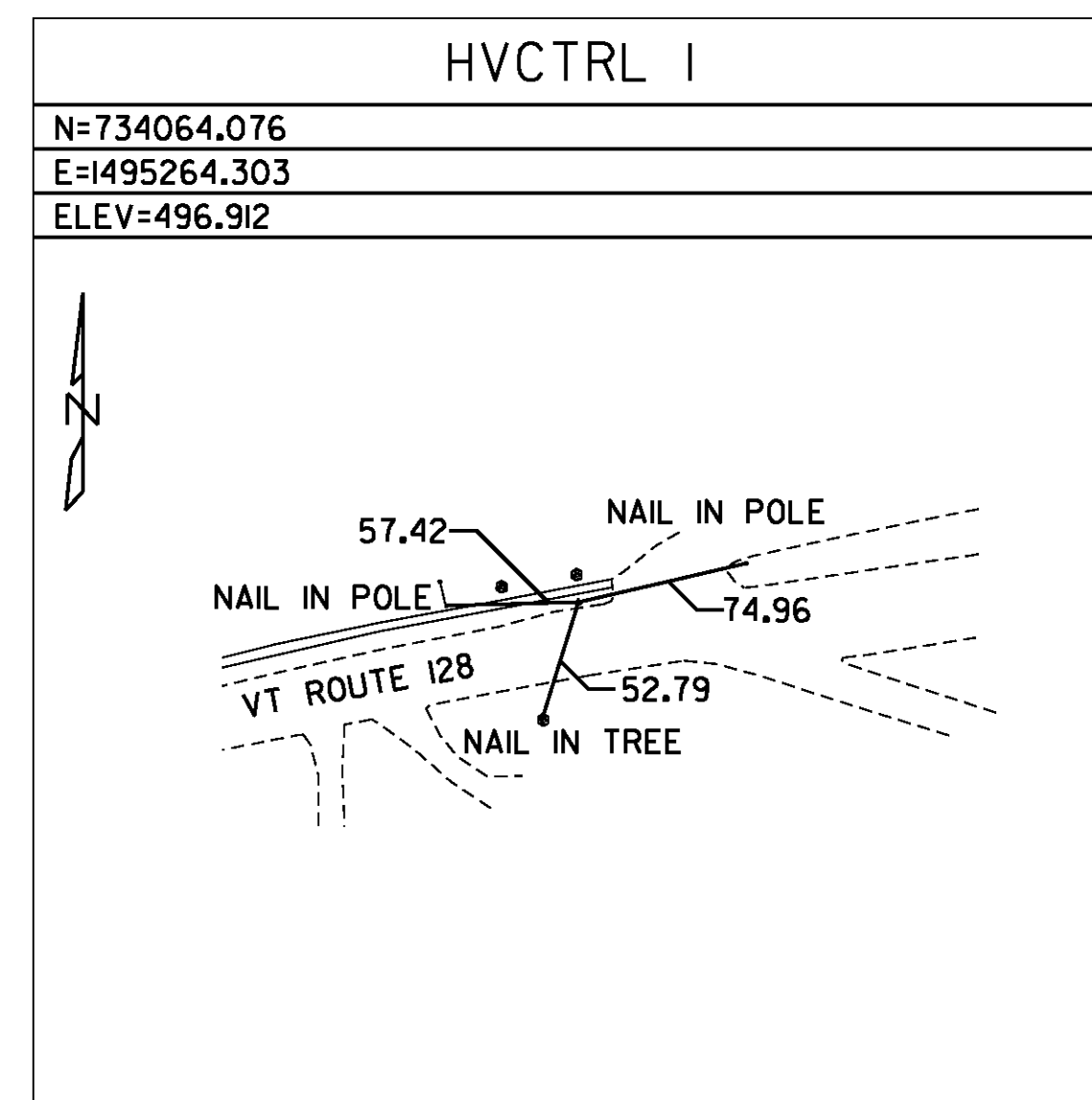
DIRECTION	ACTUAL GRID POINTS		PROJECT SPECIFIC COORDINATE POINTS
	ENGLISH		
N	733124.962 FT		
E	1486286.307 FT		
Z	482.278 FT		

GENERAL LOCATION, ESSEX, VT., ABOUT 1.5 MI (2.4 KM) NORTHEAST OF ESSEX JUNCTION.

TO REACH FROM THE VT ROUTE 15 BRIDGE OVER THE CIRCUMFERENTIAL HIGHWAY (ROUTE 289) GO NORTHWEST ALONG ROUTE 289 FOR 0.2 MI (0.3 KM) TO THE JUNCTION OF THE NORTHWEST END OF AN ON-RAMP AND THE MARK ON THE RIGHT.

THE MARK IS SET IN A FIELD 8 CM BELOW GROUND SURFACE IN THE TOP OF A ROCK OUTCROP OF WHICH 30 CM IS EXPOSED.

IT IS 56.0 M (183.7 FT) NORTHEAST OF AND ABOUT 7 M (23.0 FT) HIGHER THAN THE CENTERLINE OF ROUTE 289, 8.4 M (27.6 FT) WEST OF A 25 CM CHERRY AT THE CORNER OF A BRUSHLINE, 18.7 M (61.4 FT) NORTHWEST OF A 4 CM SPRUCE, AND 1.2 M (3.9 FT) NORTHEAST OF A FIBERGLASS WITNESS POST AND THE RIGHT-OF-WAY FENCE.



NOT TO SCALE

NOTE: ALL DIMENSIONS ARE IN FEET UNLESS NOTED OTHERWISE.



PROJECT TIE SHEET #1

PROJECT NAME: ESSEX-WESTFORD
PROJECT NUMBER: STP 2912(I)

FILE NAME: p10c226.dgn
PROJECT LEADER: JLL
DESIGNED BY: STANTEC
IPARM FILE: p10c226ct01.i

PLOT DATE: 2/20/2013
DRAWN BY: STANTEC
CHECKED BY: STANTEC
SHEET 2 OF 239