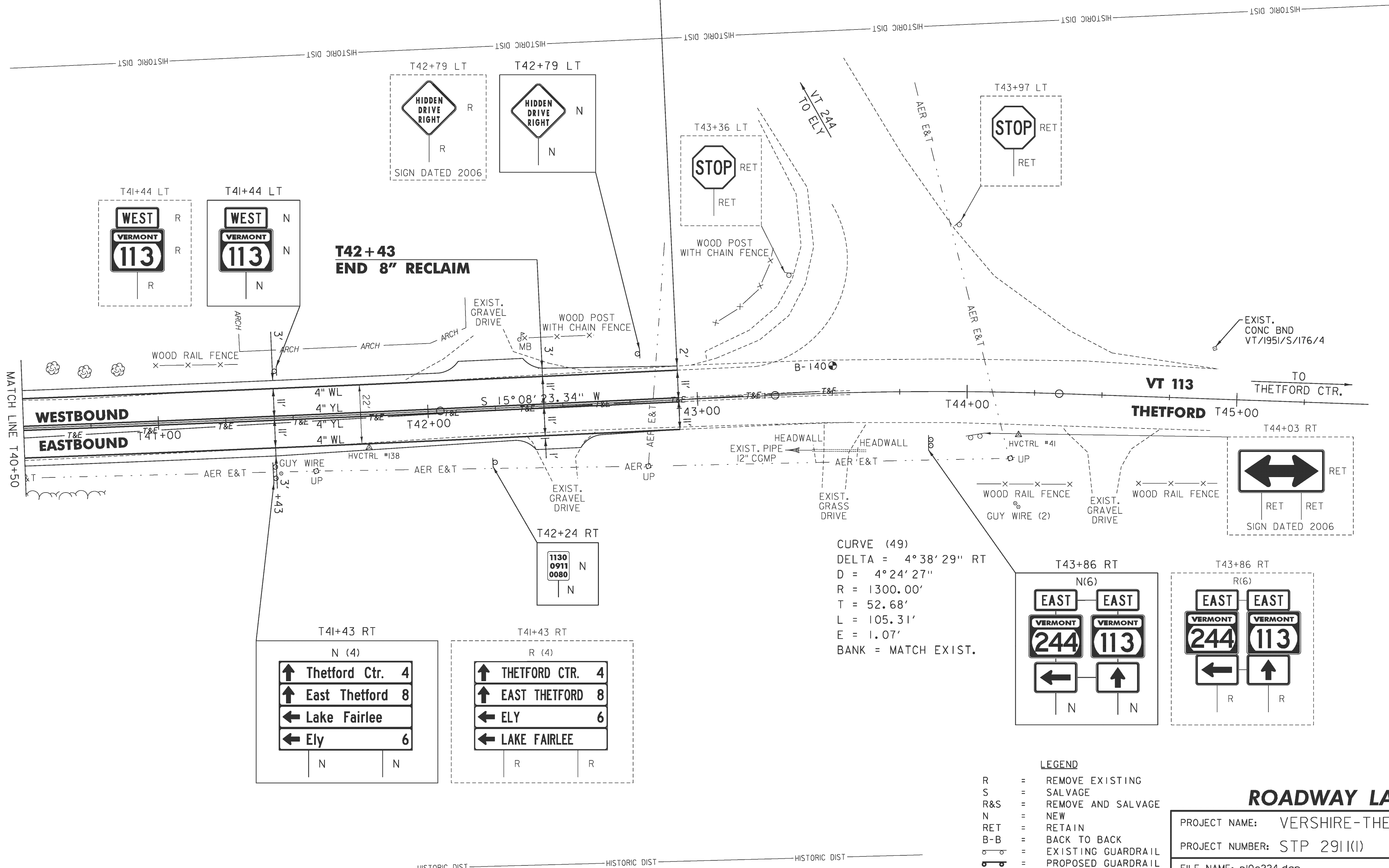


TEMPORARY 4 INCH WHITE LINE, PAINT
 DURABLE 4 INCH WHITE LINE (OPTION BID ITEM)
 T40+50 TO T42+93 SOLID RT
 T40+50 TO T42+93 SOLID LT

REMOVING SIGNS
 AS SHOWN - 13

TEMPORARY 4 INCH YELLOW LINE, PAINT
 DURABLE 4 INCH YELLOW LINE (OPTION BID ITEM)
 T40+50 TO T42+93 SOLID LT & RT

**T42+93.00 (MM 0.813)
 END PROJECT
 STP 2911(1)**



CURVE (49)
 DELTA = 4°38'29" RT
 D = 4°24'27"
 R = 1300.00'
 T = 52.68'
 L = 105.31'
 E = 1.07'
 BANK = MATCH EXIST.

T41+43 RT N (4)

↑	Thetford Ctr.	4
↑	East Thetford	8
←	Lake Fairlee	
←	Ely	6

T41+43 RT R (4)

↑	THETFORD CTR.	4
↑	EAST THETFORD	8
←	ELY	6
←	LAKE FAIRLEE	

T43+86 RT N(6)

EAST	EAST
VERMONT	VERMONT
244	113
←	↑

T43+86 RT R(6)

EAST	EAST
VERMONT	VERMONT
244	113
←	↑

- LEGEND**
- R = REMOVE EXISTING
 - S = SALVAGE
 - R&S = REMOVE AND SALVAGE
 - N = NEW
 - RET = RETAIN
 - B-B = BACK TO BACK
 - = EXISTING GUARDRAIL
 - = PROPOSED GUARDRAIL
 - YL = YELLOW LINE
 - WL = WHITE LINE
 - = DELINEATOR
 - = PROPOSED UP

ROADWAY LAYOUT 40

PROJECT NAME: VERSHIRE-THETFORD
 PROJECT NUMBER: STP 2911(1)

FILE NAME: pl0c224.dgn
 PROJECT LEADER: PTS
 DESIGNED BY: NLL
 IPARM FILE NAME: IOC224_67

PLOT DATE: 3/8/2013
 DRAWN BY: SNG
 CHECKED BY: PTS
 SHEET 67 OF 232