

TEMPORARY 4 INCH WHITE LINE, PAINT
 DURABLE 4 INCH WHITE LINE (OPTION BID ITEM)
 T17+50 TO T29+50 SOLID RT
 T17+50 TO T29+50 SOLID LT

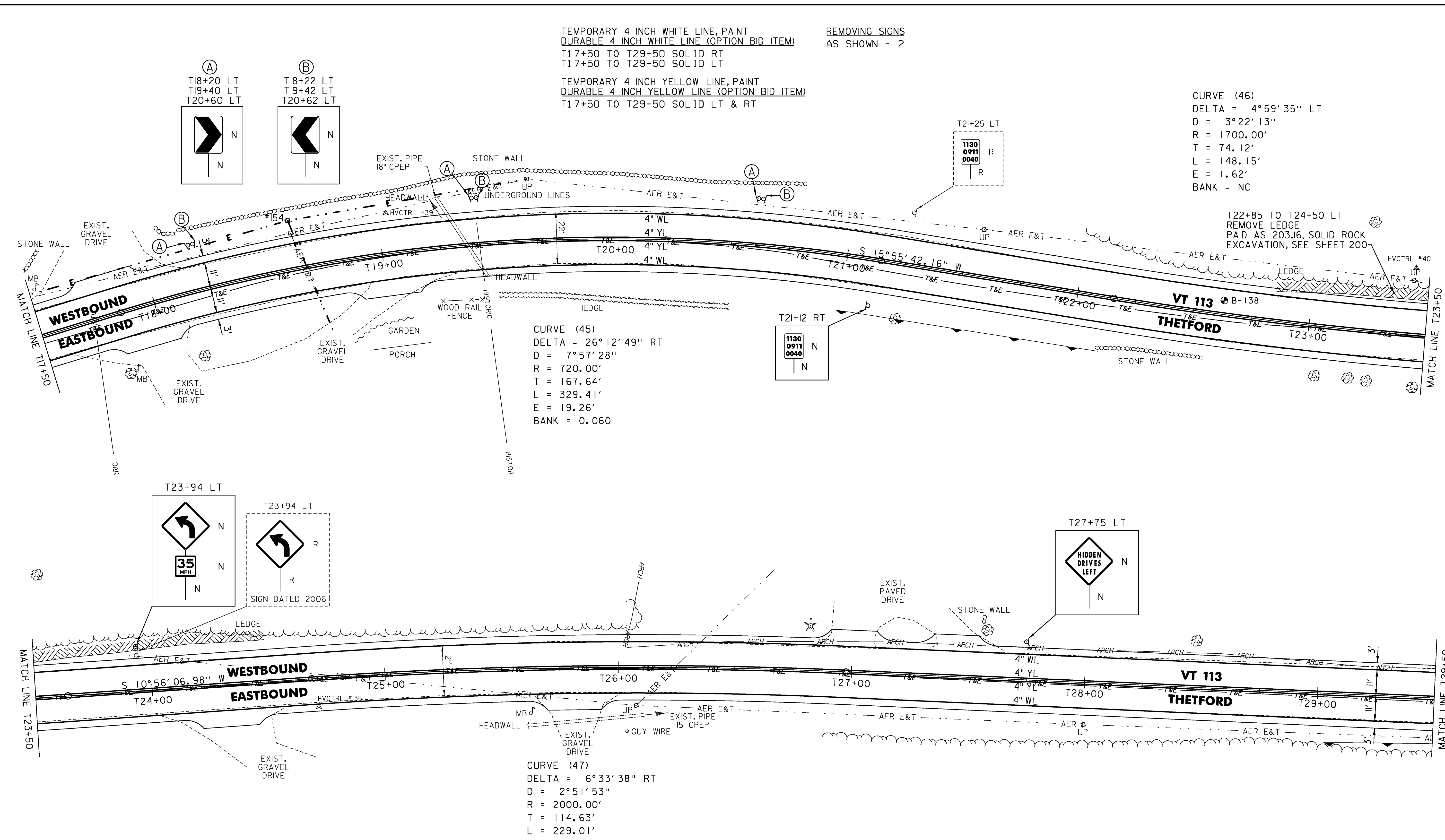
TEMPORARY 4 INCH YELLOW LINE, PAINT
 DURABLE 4 INCH YELLOW LINE (OPTION BID ITEM)
 T17+50 TO T29+50 SOLID LT & RT

REMOVING SIGNS
 AS SHOWN - 2

CURVE (46)
 DELTA = 4°59'35" LT
 D = 3°22'13"
 R = 1700.00'
 T = 74.12'
 L = 148.15'
 E = 1.62'
 BANK = NC

CURVE (45)
 DELTA = 26°12'49" RT
 D = 7°57'28"
 R = 720.00'
 T = 167.64'
 L = 329.41'
 E = 19.26'
 BANK = 0.060

CURVE (47)
 DELTA = 6°33'38" RT
 D = 2°51'53"
 R = 2000.00'
 T = 114.63'
 L = 229.01'
 E = 3.28'
 BANK = 0.051



- LEGEND**
- R = REMOVE EXISTING
 - S = SALVAGE
 - R&S = REMOVE AND SALVAGE
 - N = NEW
 - RET = RETAIN
 - B-B = BACK TO BACK
 - = EXISTING GUARDRAIL
 - = PROPOSED GUARDRAIL
 - YL = YELLOW LINE
 - WL = WHITE LINE
 - = DELINEATOR
 - = PROPOSED UP

ROADWAY LAYOUT 38

PROJECT NAME: VERSHIRE-THETFORD
 PROJECT NUMBER: STP 2911(I)
 FILE NAME: pl0c224.dgn
 PROJECT LEADER: PTS
 DESIGNED BY: NLL
 IPARM FILE NAME: IOC224_65

PLOT DATE: 3/8/2013
 DRAWN BY: SNG
 CHECKED BY: PTS
 SHEET 65 OF 232