

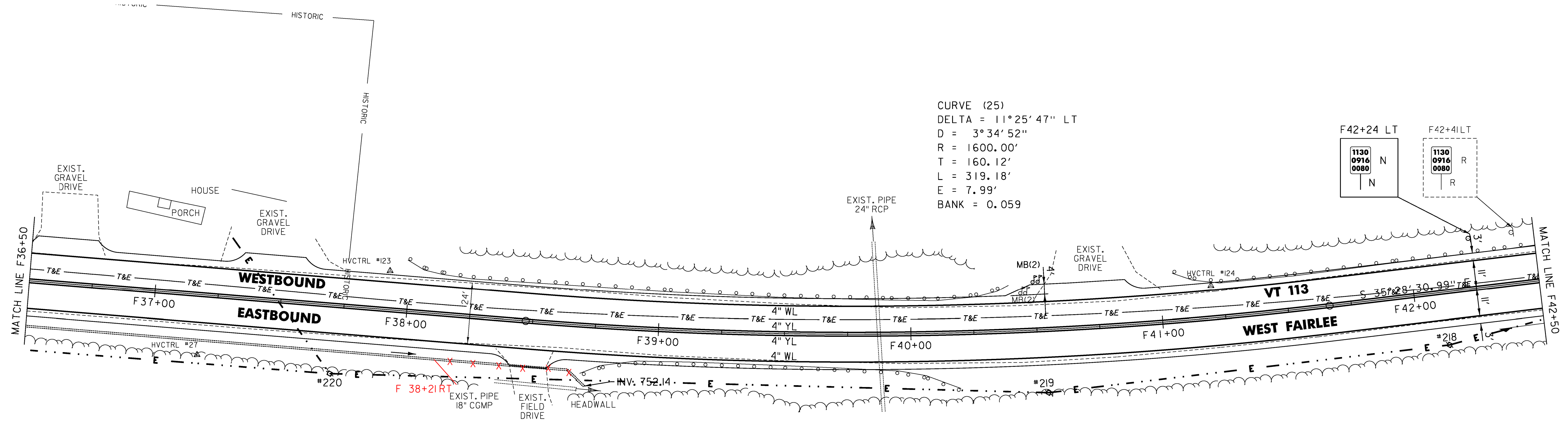
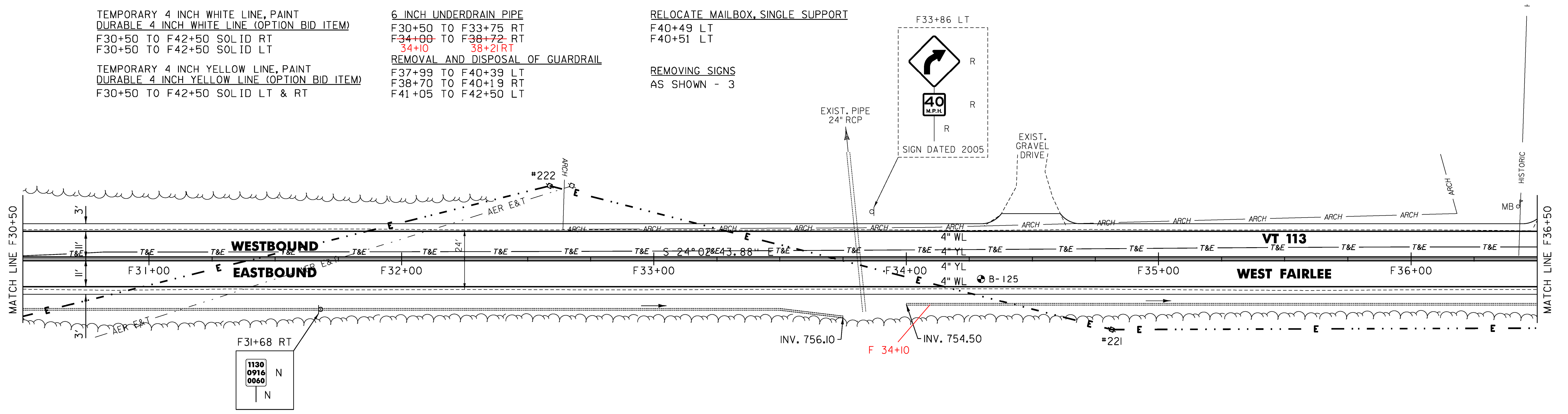
TEMPORARY 4 INCH WHITE LINE, PAINT  
 DURABLE 4 INCH WHITE LINE (OPTION BID ITEM)  
 F30+50 TO F42+50 SOLID RT  
 F30+50 TO F42+50 SOLID LT

TEMPORARY 4 INCH YELLOW LINE, PAINT  
 DURABLE 4 INCH YELLOW LINE (OPTION BID ITEM)  
 F30+50 TO F42+50 SOLID LT & RT

6 INCH UNDERDRAIN PIPE  
 F30+50 TO F33+75 RT  
 F34+00 TO F38+72 RT  
 34+10 38+21 RT  
 REMOVAL AND DISPOSAL OF GUARDRAIL  
 F37+99 TO F40+39 LT  
 F38+70 TO F40+19 RT  
 F41+05 TO F42+50 LT

RELOCATE MAILBOX, SINGLE SUPPORT  
 F40+49 LT  
 F40+51 LT

REMOVING SIGNS  
 AS SHOWN - 3



CURVE (25)  
 DELTA = 11°25'47" LT  
 D = 3°34'52"  
 R = 1600.00'  
 T = 160.12'  
 L = 319.18'  
 E = 7.99'  
 BANK = 0.059

- LEGEND**
- R = REMOVE EXISTING
  - S = SALVAGE
  - R&S = REMOVE AND SALVAGE
  - N = NEW
  - RET = RETAIN
  - B-B = BACK TO BACK
  - = EXISTING GUARDRAIL
  - ⌒ = PROPOSED GUARDRAIL
  - YL = YELLOW LINE
  - WL = WHITE LINE
  - ⊕ = DELINEATOR
  - ⊖ = PROPOSED UP

**ROADWAY LAYOUT 25**

PROJECT NAME: VERSHIRE-THETFORD  
 PROJECT NUMBER: STP 2911(I)

FILE NAME: p10c224.dgn  
 PROJECT LEADER: PTS  
 DESIGNED BY: NLL  
 IPARM FILE NAME: IOC224.52

PLOT DATE: 3/8/2013  
 DRAWN BY: SNG  
 CHECKED BY: PTS  
 SHEET 52 OF 232