

TEMPORARY 4 INCH WHITE LINE, PAINT
 DURABLE 4 INCH WHITE LINE (OPTION BID ITEM)
 246+50 TO 258+50 SOLID LT
 246+50 TO 258+50 SOLID RT

TEMPORARY 4 INCH YELLOW LINE, PAINT
 DURABLE 4 INCH YELLOW LINE (OPTION BID ITEM)
 246+50 TO 258+50 SOLID LT & RT

STEEL BEAM GUARDRAIL,
 GALVANIZED W/8 FEET POSTS
 246+50 TO 251+15 LT

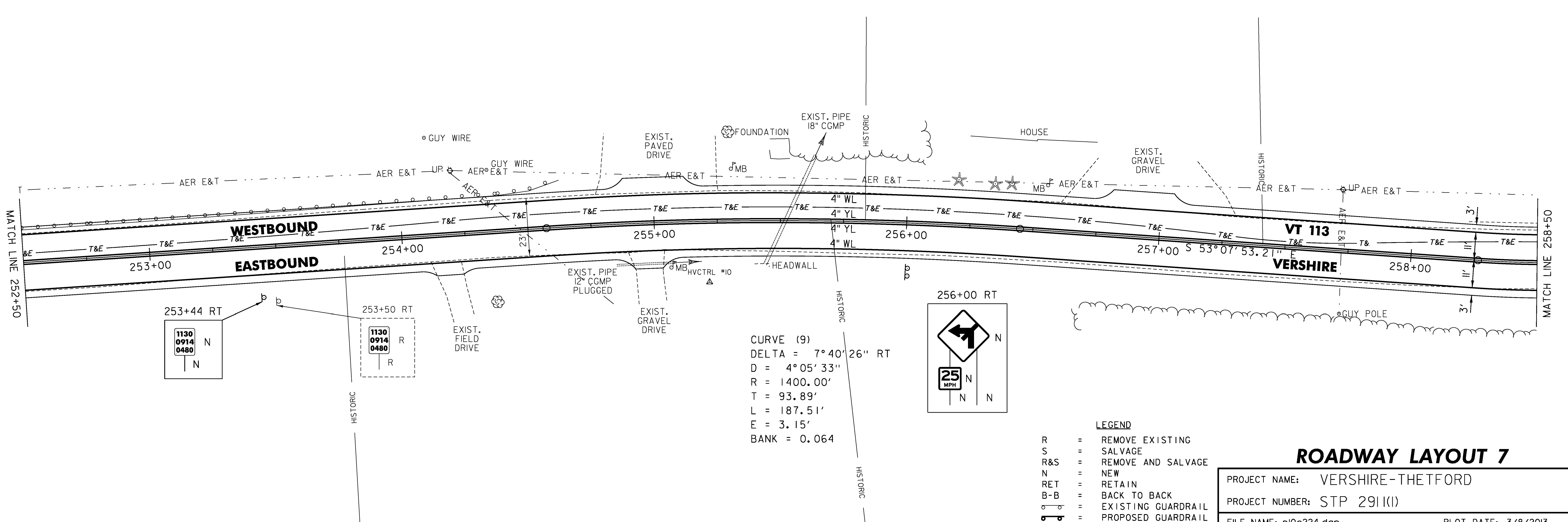
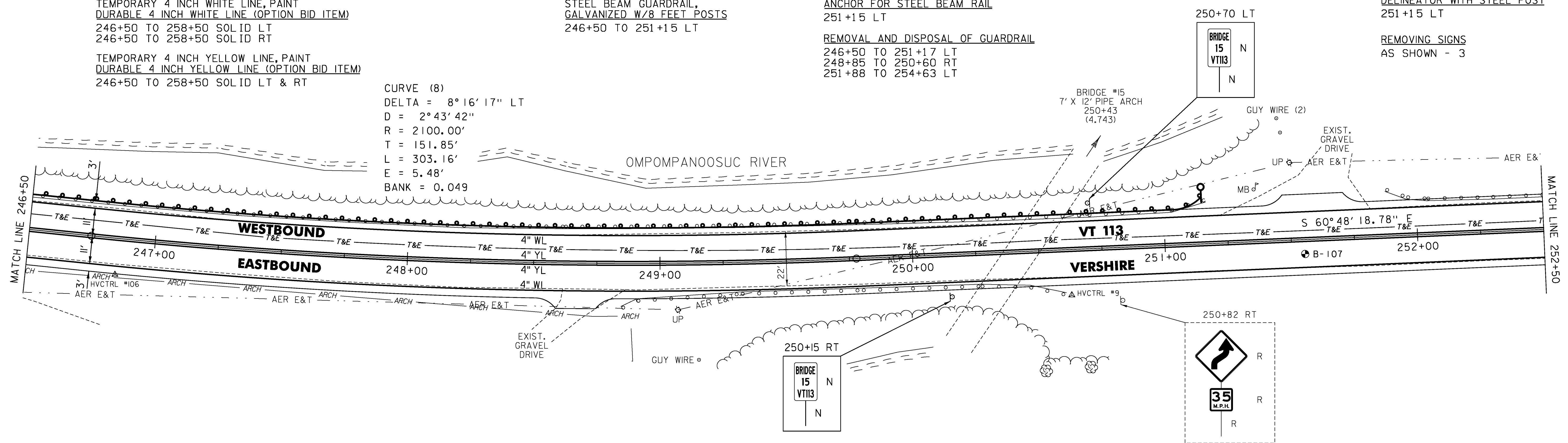
ANCHOR FOR STEEL BEAM RAIL
 251+15 LT

REMOVAL AND DISPOSAL OF GUARDRAIL
 246+50 TO 251+17 LT
 248+85 TO 250+60 RT
 251+88 TO 254+63 LT

DELINEATOR WITH STEEL POST
 251+15 LT

REMOVING SIGNS
 AS SHOWN - 3

CURVE (8)
 DELTA = 8° 16' 17" LT
 D = 2° 43' 42"
 R = 2100.00'
 T = 151.85'
 L = 303.16'
 E = 5.48'
 BANK = 0.049



CURVE (9)
 DELTA = 7° 40' 26" RT
 D = 4° 05' 33"
 R = 1400.00'
 T = 93.89'
 L = 187.51'
 E = 3.15'
 BANK = 0.064

- LEGEND
- R = REMOVE EXISTING
 - S = SALVAGE
 - R&S = REMOVE AND SALVAGE
 - N = NEW
 - RET = RETAIN
 - B-B = BACK TO BACK
 - = EXISTING GUARDRAIL
 - = PROPOSED GUARDRAIL
 - YL = YELLOW LINE
 - WL = WHITE LINE
 - = DELINEATOR
 - = PROPOSED UP

ROADWAY LAYOUT 7

PROJECT NAME: VERSHIRE-THETFORD
 PROJECT NUMBER: STP 2911(I)
 FILE NAME: pl0c224.dgn
 PROJECT LEADER: PTS
 DESIGNED BY: NLL
 IPARM FILE NAME: IOC224_34
 PLOT DATE: 3/8/2013
 DRAWN BY: SNG
 CHECKED BY: PTS
 SHEET 34 OF 232