

TEMPORARY 4 INCH WHITE LINE, PAINT
 DURABLE 4 INCH WHITE LINE (OPTION BID ITEM)
 234+50 TO 246+50 SOLID LT
 234+50 TO 246+50 SOLID RT

TEMPORARY 4 INCH YELLOW LINE, PAINT
 DURABLE 4 INCH YELLOW LINE (OPTION BID ITEM)
 234+50 TO 246+50 SOLID LT & RT

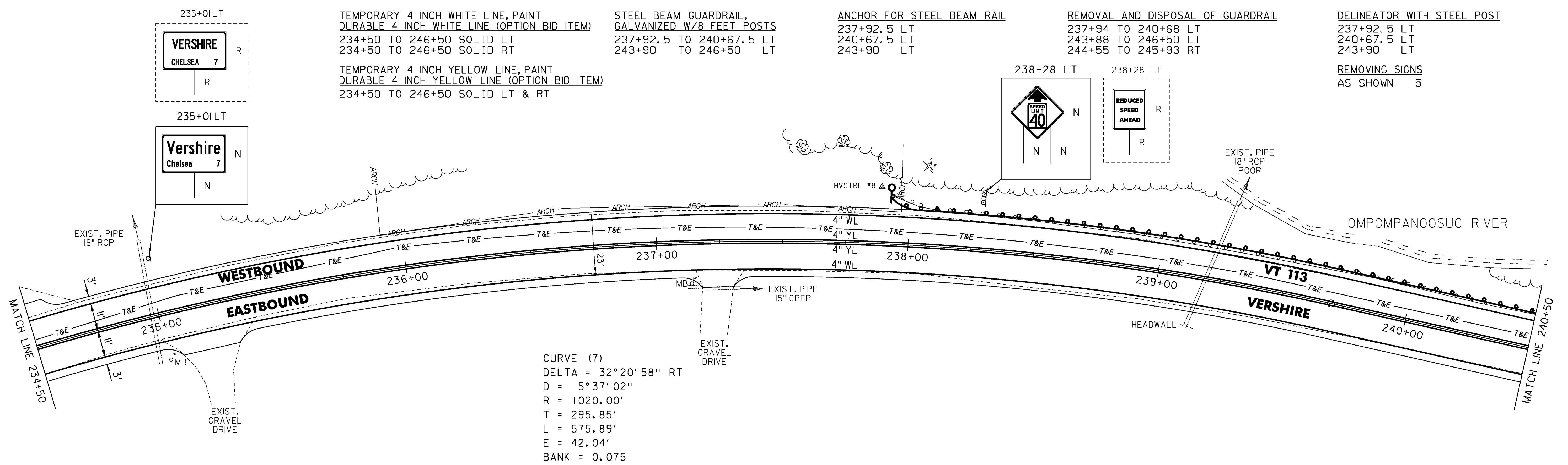
STEEL BEAM GUARDRAIL,
 GALVANIZED W/8 FEET POSTS
 237+92.5 TO 240+67.5 LT
 237+92.5 TO 240+67.5 LT
 243+90 TO 246+50 LT

ANCHOR FOR STEEL BEAM RAIL
 237+92.5 LT
 240+67.5 LT
 243+90 LT

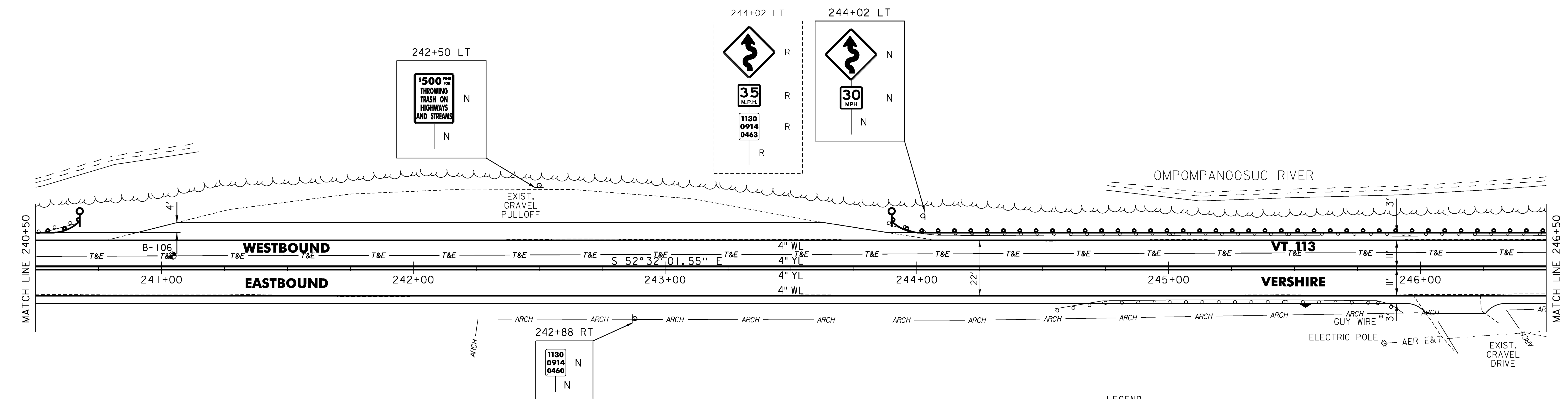
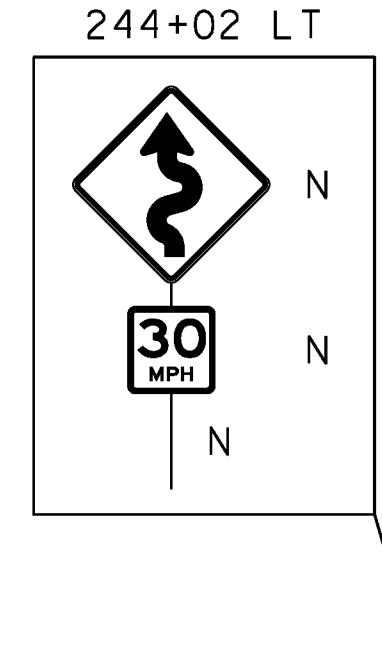
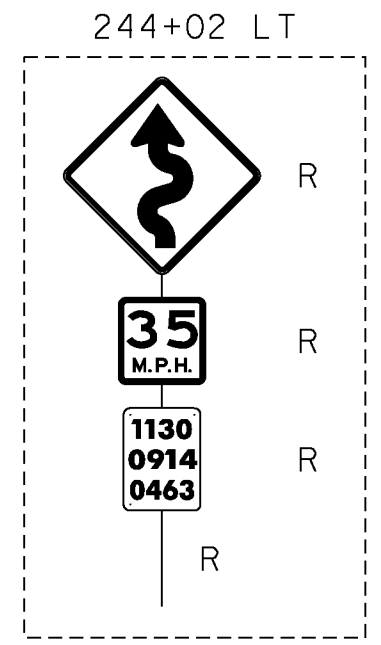
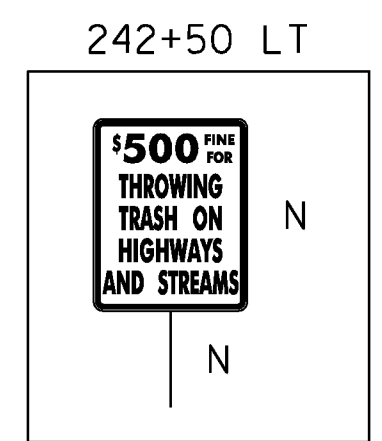
REMOVAL AND DISPOSAL OF GUARDRAIL
 237+94 TO 240+68 LT
 243+88 TO 246+50 LT
 244+55 TO 245+93 RT

DELINEATOR WITH STEEL POST
 237+92.5 LT
 240+67.5 LT
 243+90 LT

REMOVING SIGNS
 AS SHOWN - 5



CURVE (7)
 DELTA = 32°20'58" RT
 D = 5°37'02"
 R = 1020.00'
 T = 295.85'
 L = 575.89'
 E = 42.04'
 BANK = 0.075



- LEGEND
- R = REMOVE EXISTING
 - S = SALVAGE
 - R&S = REMOVE AND SALVAGE
 - N = NEW
 - RET = RETAIN
 - B-B = BACK TO BACK
 - = EXISTING GUARDRAIL
 - = PROPOSED GUARDRAIL
 - YL = YELLOW LINE
 - WL = WHITE LINE
 - = DELINEATOR
 - = PROPOSED UP

ROADWAY LAYOUT 6

PROJECT NAME: VERSHIRE-THETFORD
 PROJECT NUMBER: STP 2911(I)
 FILE NAME: pl0c224.dgn
 PROJECT LEADER: PTS
 DESIGNED BY: NULL
 IPARM FILE NAME: IOC224_33

PLOT DATE: 3/8/2013
 DRAWN BY: SNG
 CHECKED BY: PTS
 SHEET 33 OF 232