

GPS CONTROL POINTS

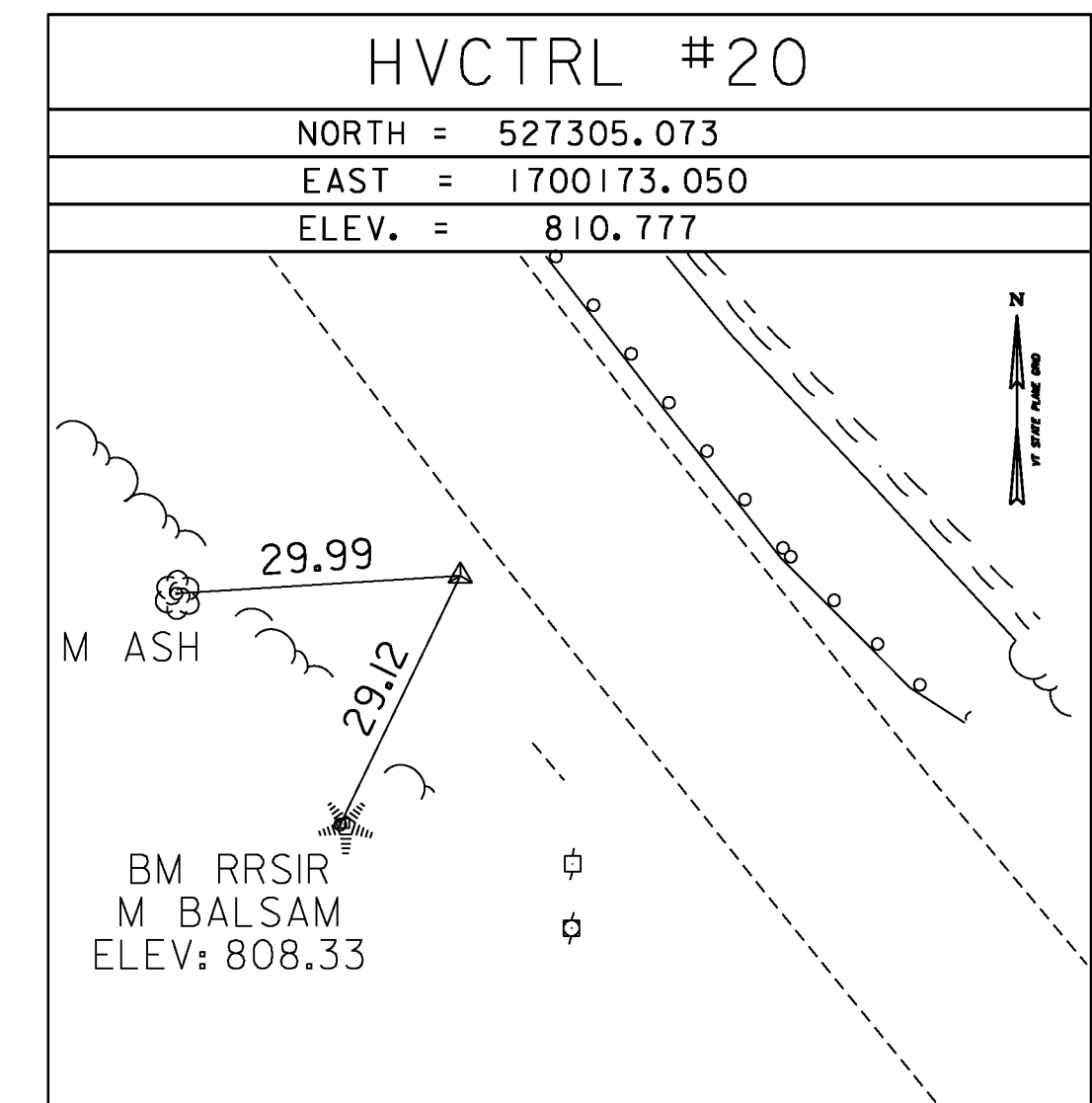
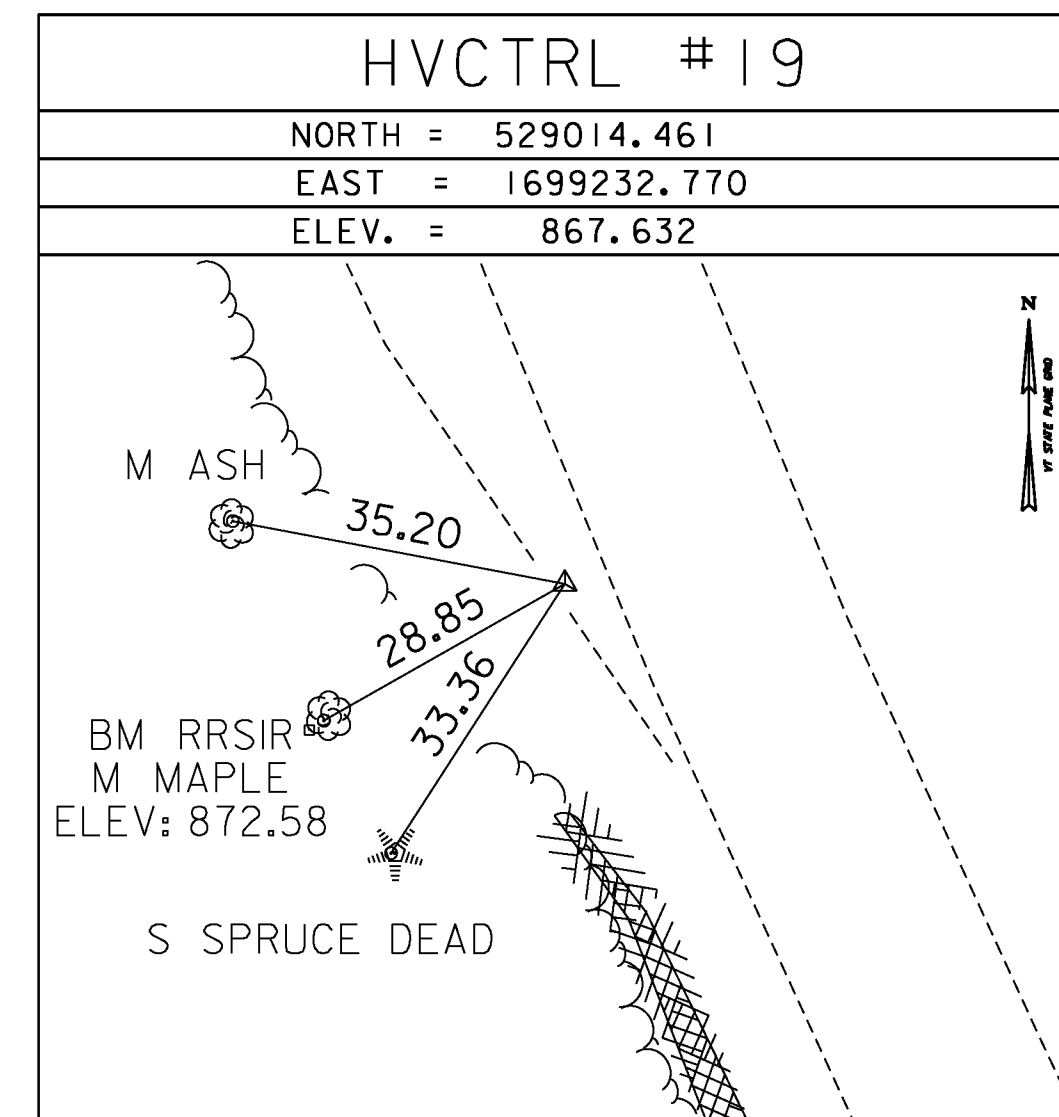
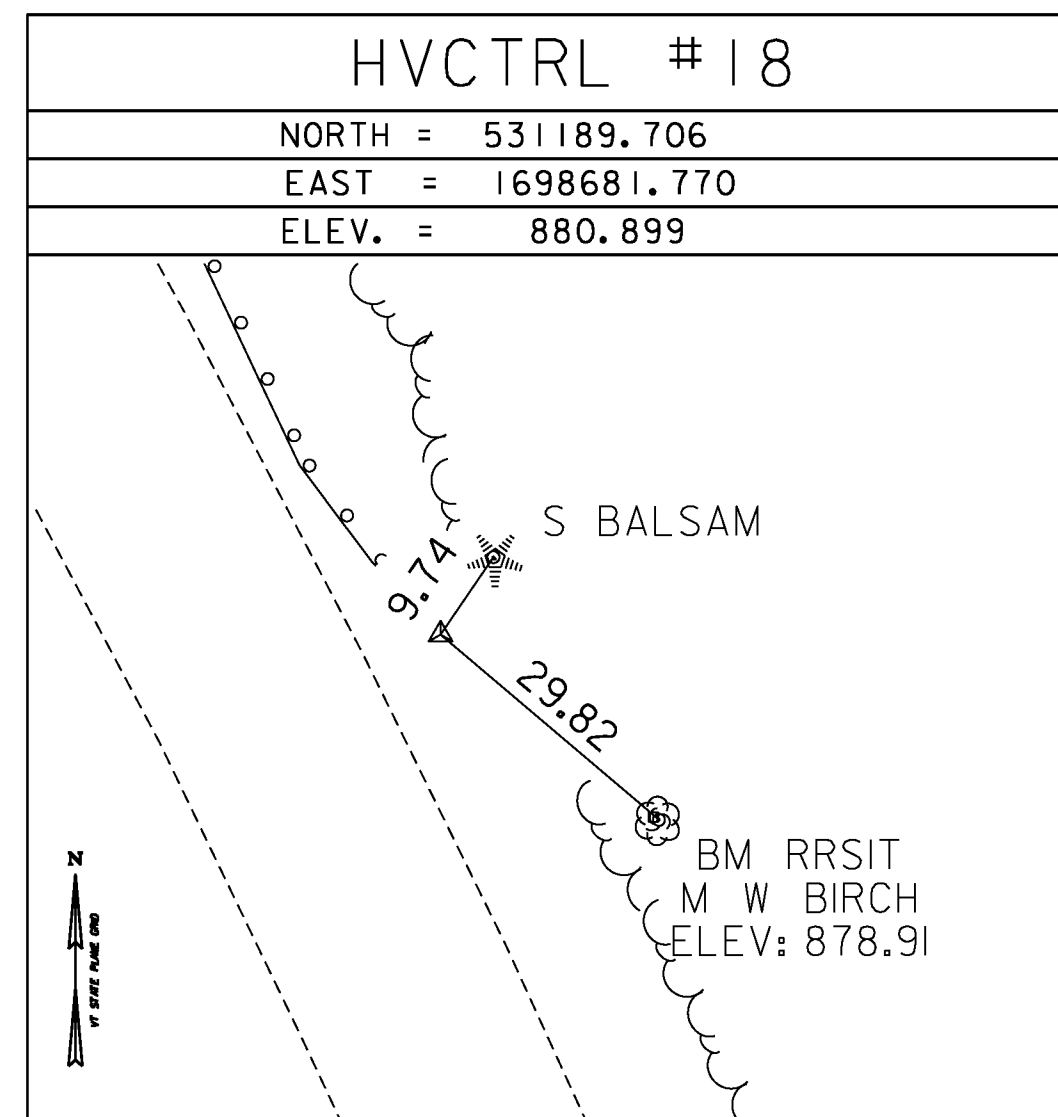
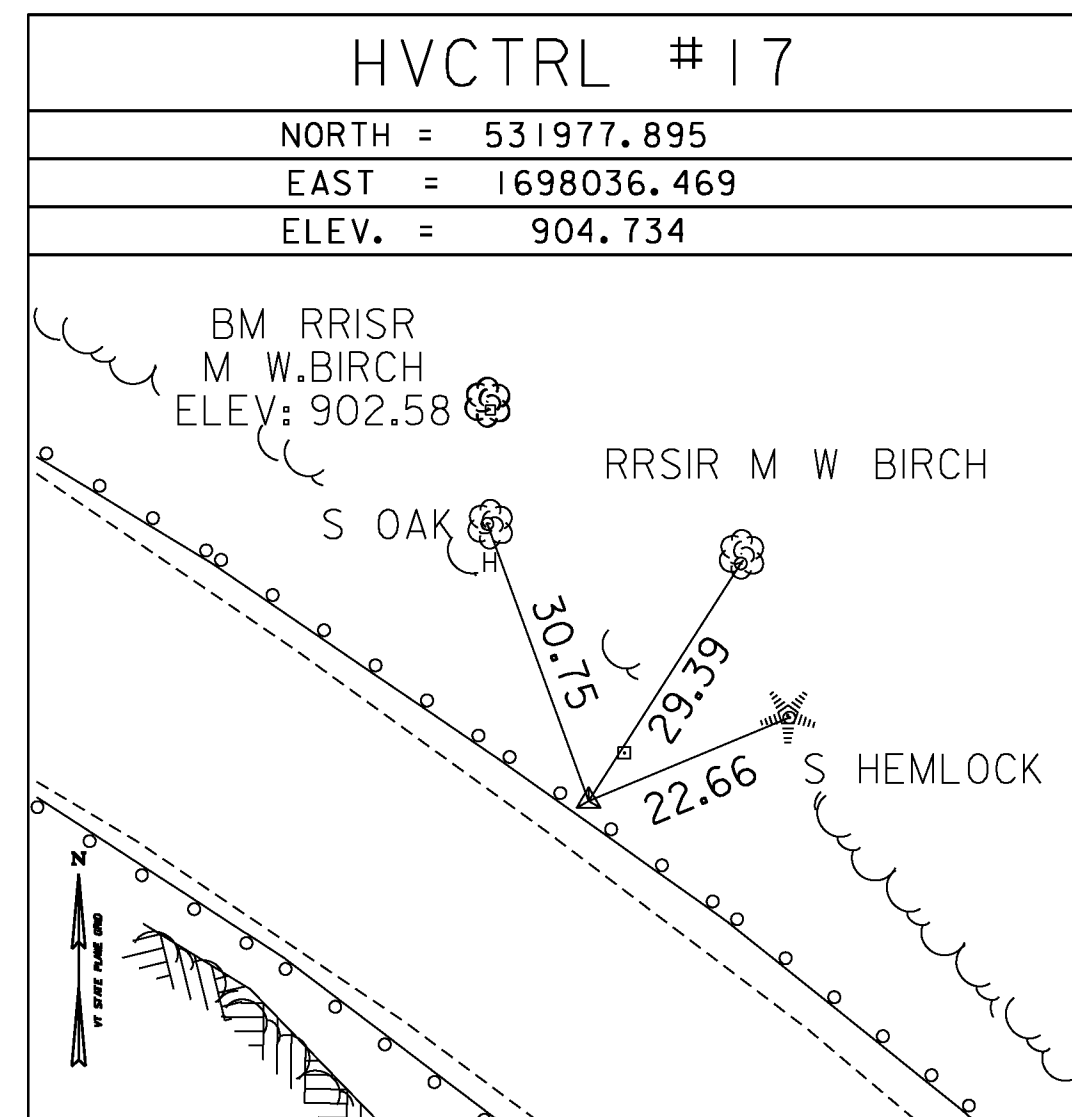
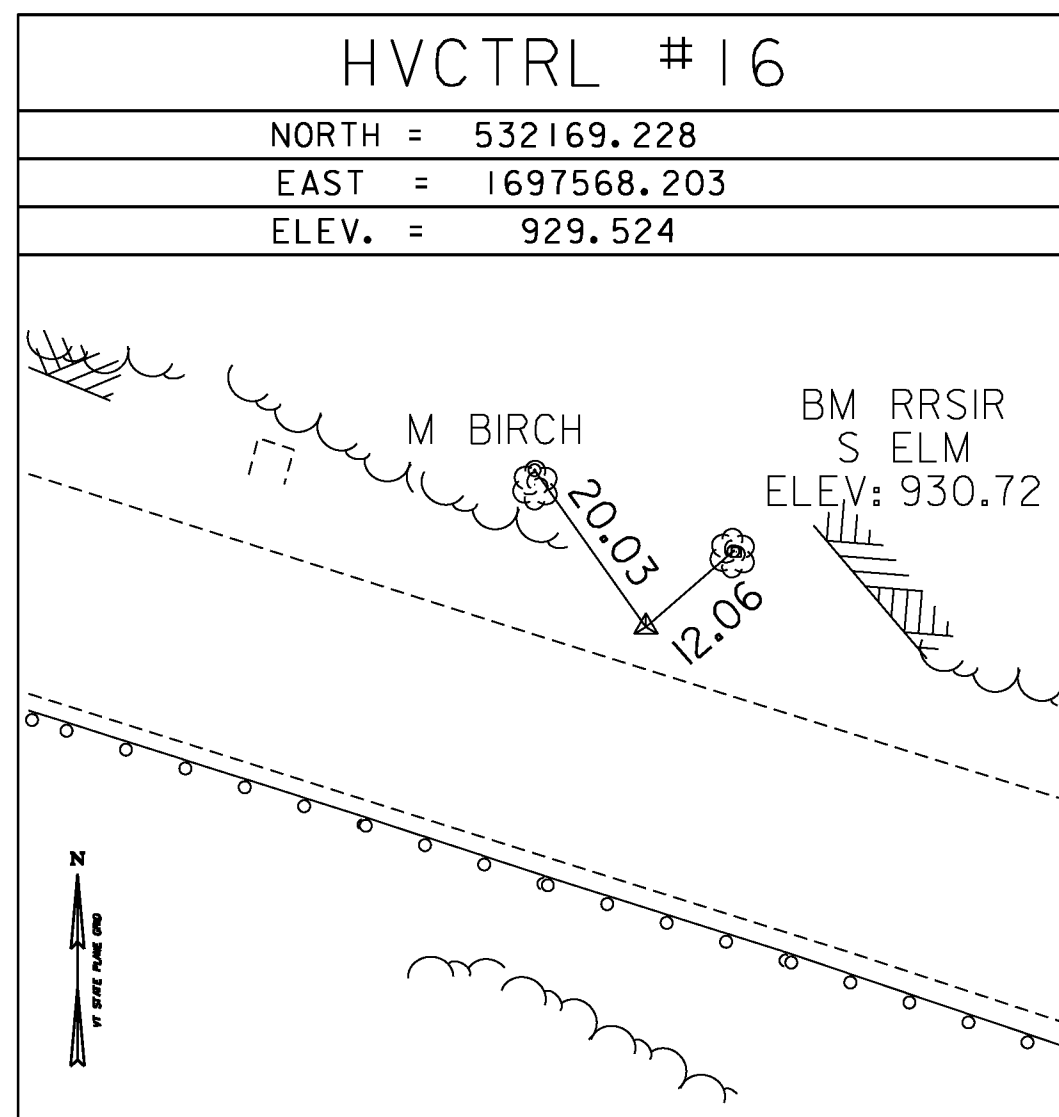
HVCTRL #14
 EAGLE HOLLOW
 NORTH = 533160.487
 EAST = 1695673.958
 ELEV. = 953.652

GENERAL LOCATION, VERSHIRE, VT. TO REACH FROM THE INTERSECTION OF VT ROUTES 113 AND 244 IN POST MILLS GO NORTHWEST ALONG VT ROUTE 113 FOR 6.1 MI (9.8 KM) TO THE SITE OF THE MARK ON THE RIGHT. IT IS 0.1 MI (0.2 KM) SOUTHEAST OF THE INTERSECTION OF VT ROUTE 113 AND EAGLE HOLLOW ROAD. THE MARK IS SET FLUSH WITH GROUND SURFACE IN THE TOP OF A 30 CM DIAMETER CONCRETE MONUMENT. IT IS 7.5 M (24.6 FT) NORTHEAST OF THE CENTERLINE OF VT ROUTE 113, 9.1 M (29.9 FT) SOUTHWEST OF THE CENTERLINE OF A GRAVEL DRIVE, 6.5 M (21.3 FT) NORTHWEST OF THE SOUTHEAST END OF A STEEL BEAM GUARD RAIL, 21.8 M (71.5 FT) NORTHEAST OF MILE MARKER 1130/0914/0540, AND 0.3 M (1.0 FT) SOUTHWEST OF A FIBERGLASS WITNESS POST.

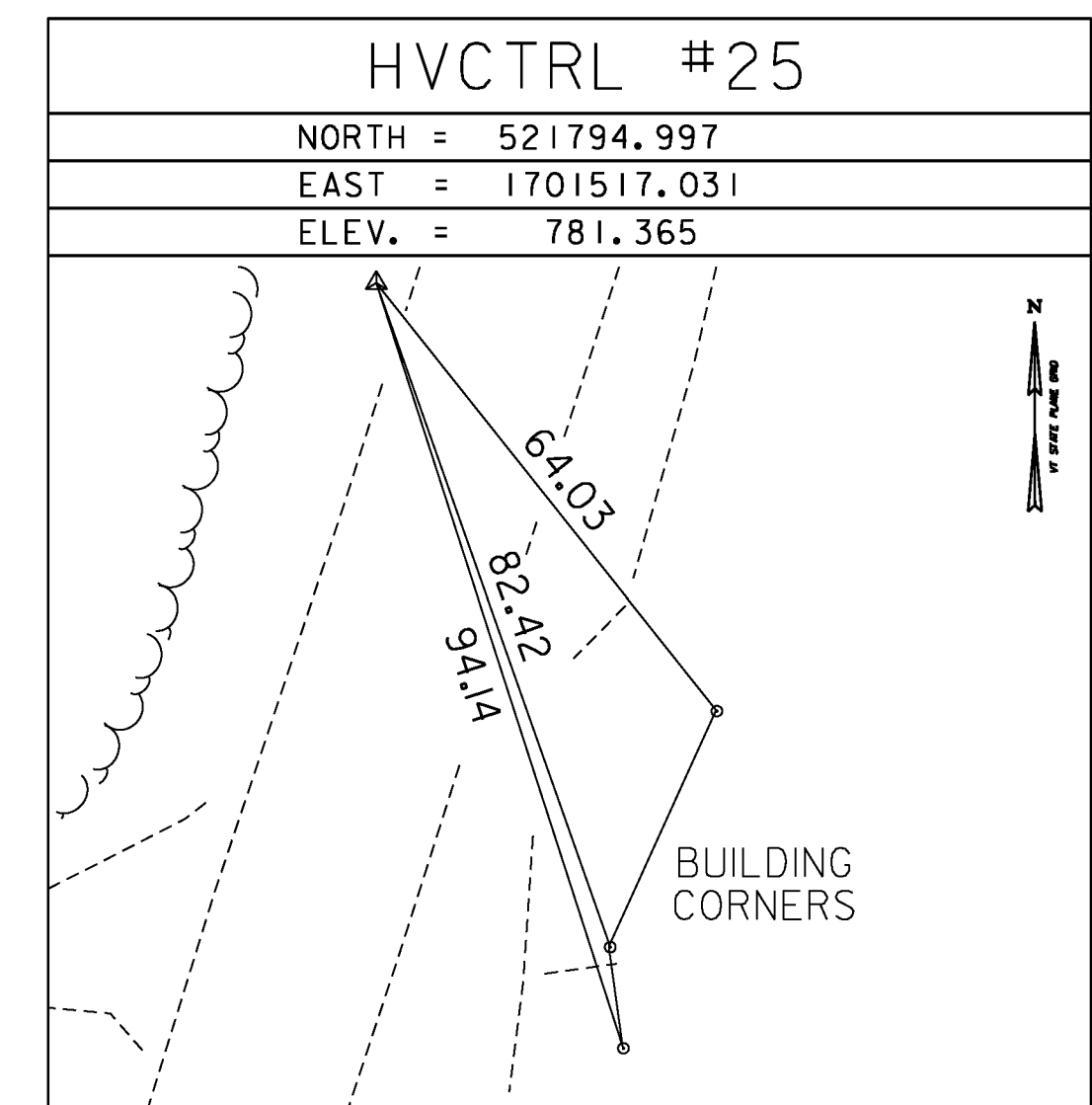
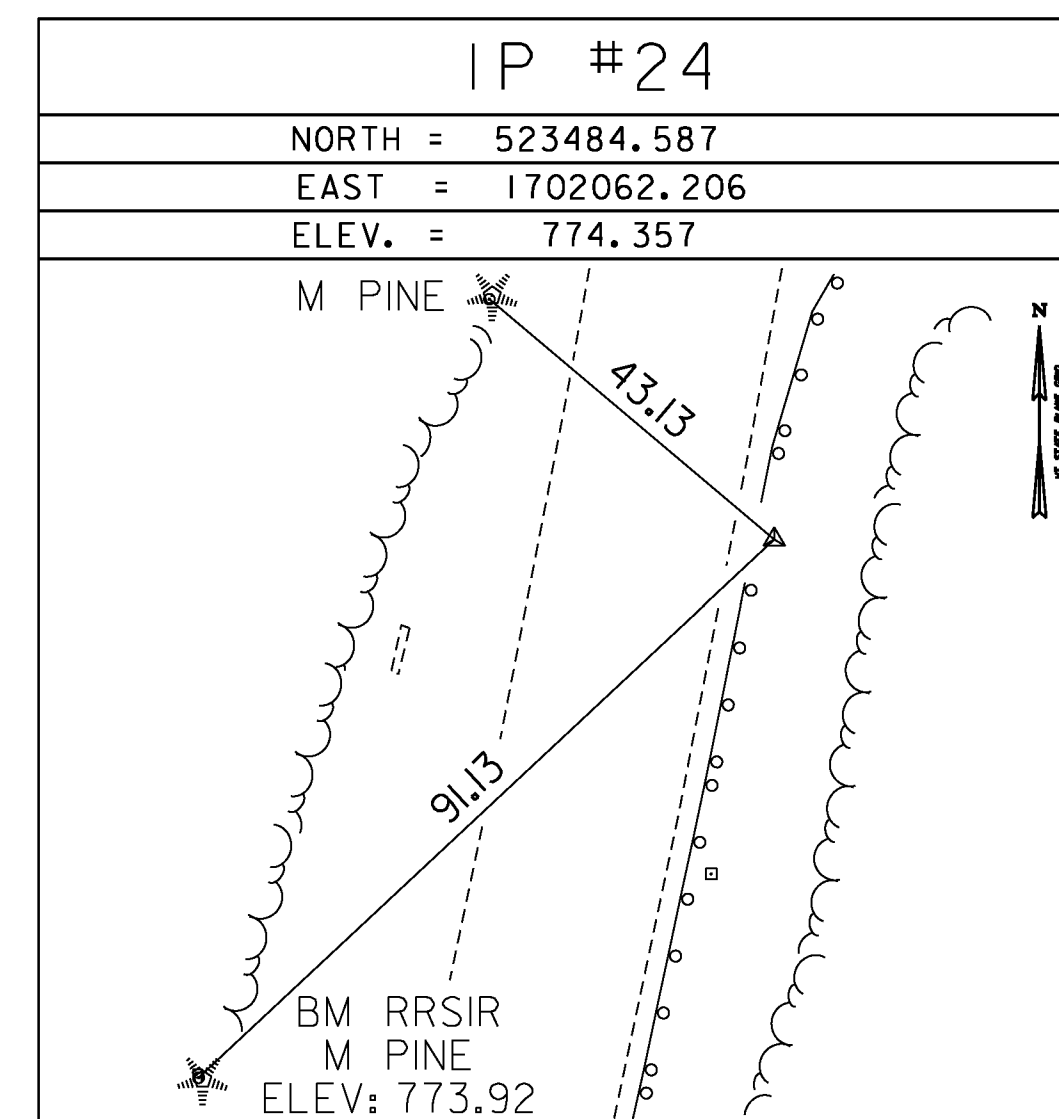
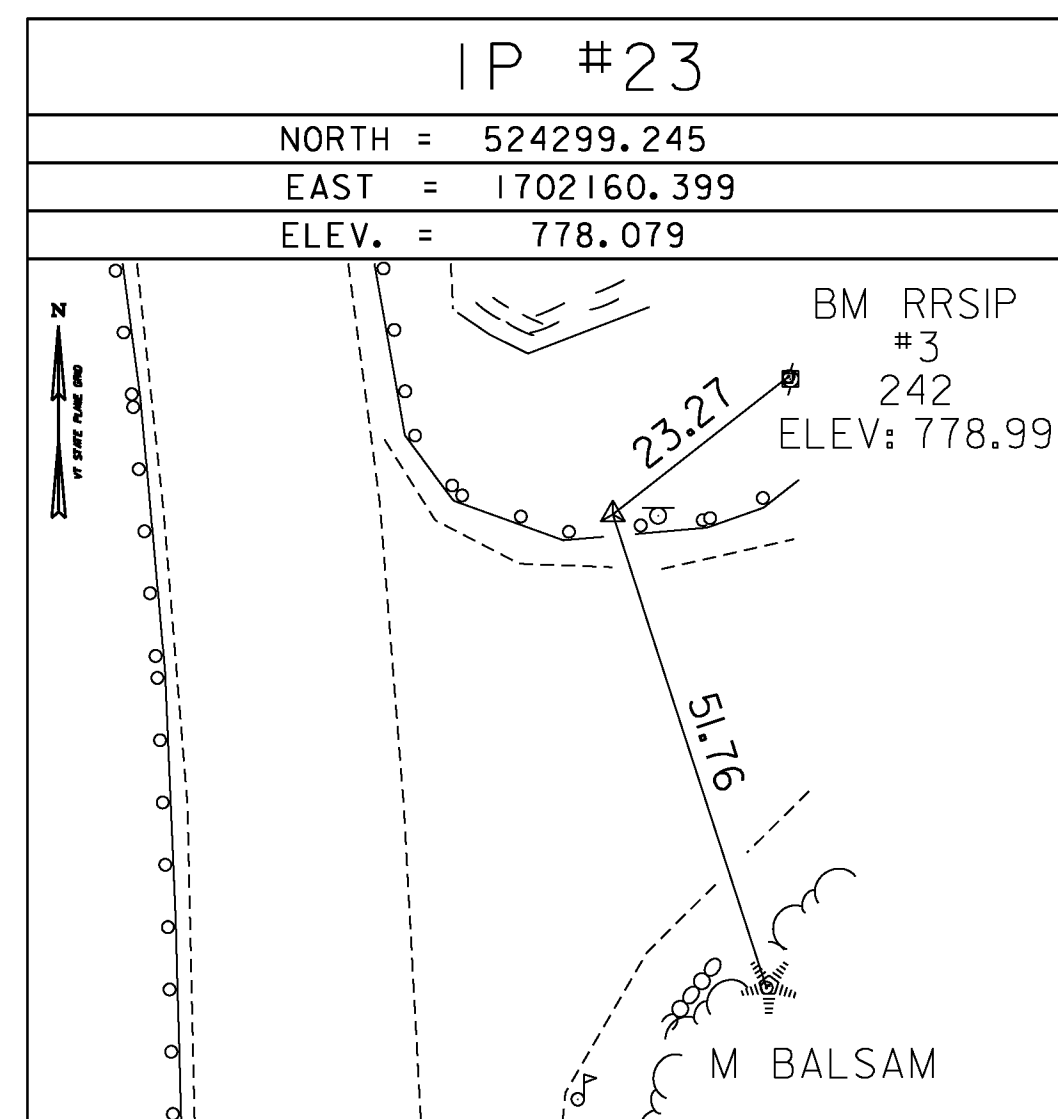
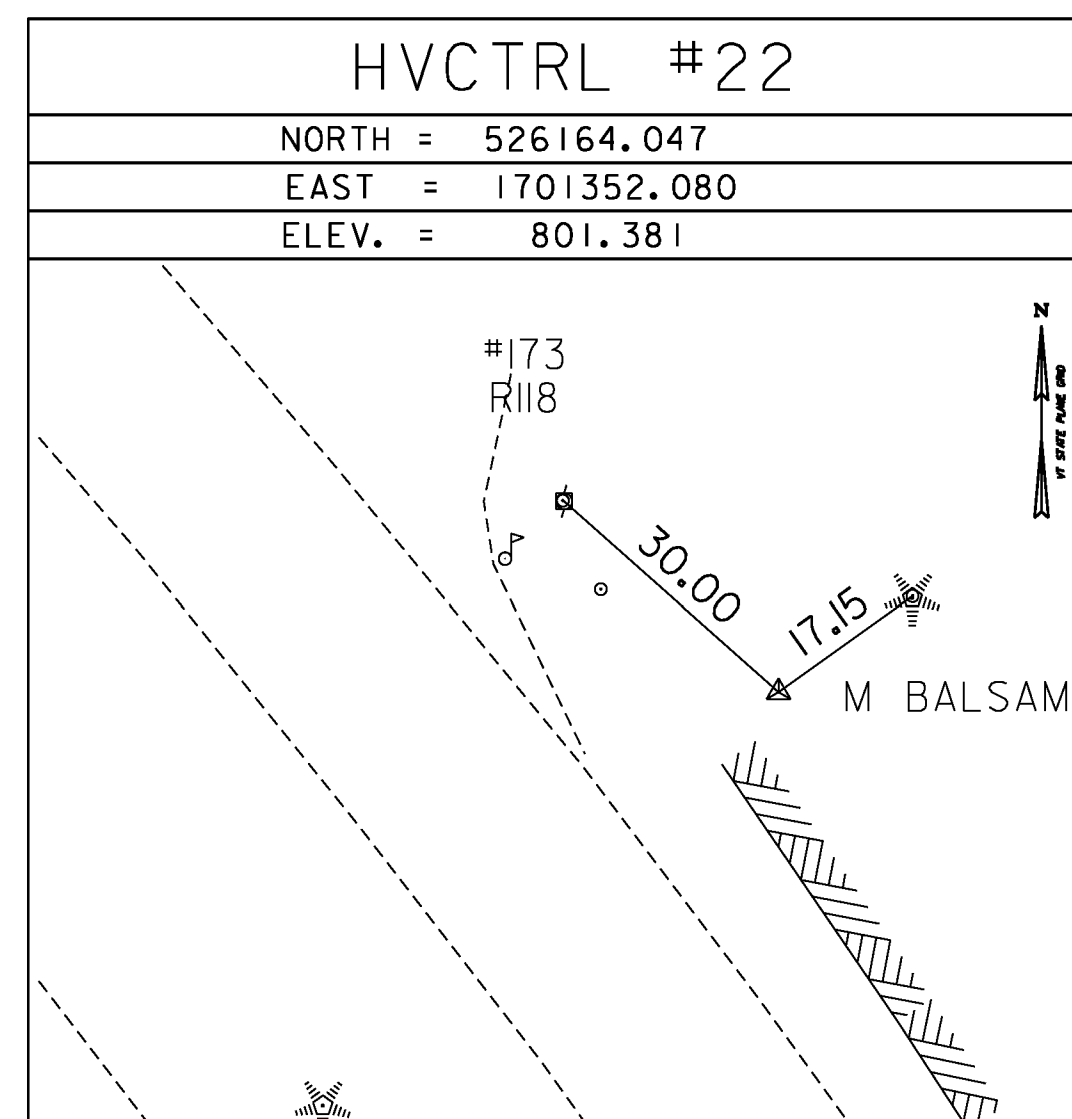
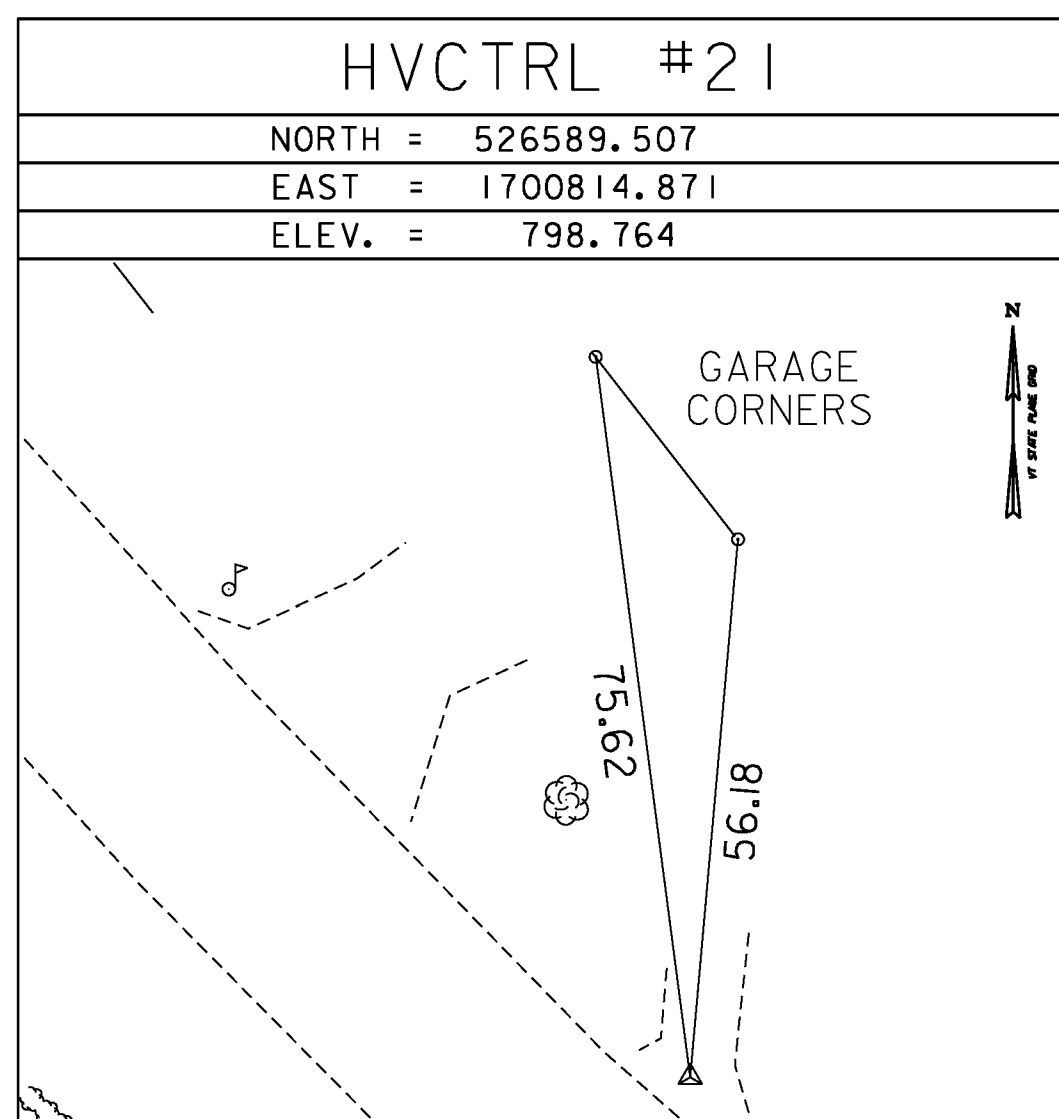
HVCTRL #15
 EAGLE HOLLOW AZ MK
 NORTH = 532349.516
 EAST = 1697004.923
 ELEV. = 933.671

GENERAL LOCATION, VERSHIRE, VT. TO REACH FROM THE INTERSECTION OF VT ROUTES 244 AND 113 IN POST MILLS GO NORTHWEST ALONG VT ROUTE 113 FOR 5.8 MI (9.3 KM) TO THE SITE OF THE MARK ON THE LEFT. TO REACH FROM THE INTERSECTION OF EAGLE HOLLOW ROAD AND VT ROUTE 113 GO SOUTHEAST ALONG VT ROUTE 113 FOR 0.4 MI (0.6 KM) TO THE MARK ON THE RIGHT. THE MARK IS SET FLUSH WITH GROUND SURFACE IN THE TOP OF A 30 CM DIAMETER CONCRETE MONUMENT. IT IS 5.5 M (18.0 FT) SOUTHWEST OF AND ABOUT LEVEL WITH THE CENTERLINE OF VT ROUTE 113, 24.8 M (81.4 FT) SOUTH SOUTHEAST OF THE CENTERLINE OF A GRAVEL DRIVE WHERE IT MEETS VT ROUTE 113, 7.1 M (23.3 FT) SOUTHEAST OF POLE NO. 173/R91/L, 1.2 M (3.9 FT) SOUTHWEST OF A STEEL BEAM GUARD RAIL, 2.0 M (6.6 FT) NORTHEAST OF A GUY ANCHOR, AND 0.3 M (1.0 FT) NORTHWEST OF A FIBERGLASS WITNESS POST.

TRAVERSE TIES



TRAVERSE TIES



DATUM	
VERTICAL	NAVD 88
HORIZONTAL	NAD 83(07)
ADJUSTMENT	COMPASS

PROJECT NAME: VERSHIRE - THETFORD
 PROJECT NUMBER: STP 2911 (I)

FILE NAME: survey\10c224t1.dgn
 PROJECT LEADER: MIKE FOWLER
 DESIGNED BY: VTRANS
 TIE SHEET 2

PLOT DATE: 1/29/2013
 DRAWN BY: R. BULLOCK
 CHECKED BY: VTRANS
 SHEET 4 OF 232