

GPS CONTROL POINTS

HVCTRL #1

VERSHIRE  
 NORTH = 535495.182  
 EAST = 1686341.345  
 ELEV. = 1275.937

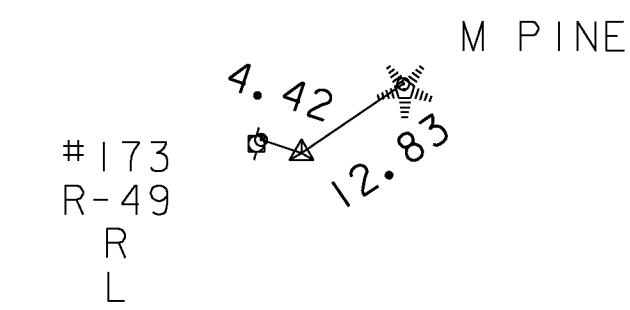
GENERAL LOCATION, VERSHIRE, VT. OWNERSHIP, TOWN OF VERSHIRE. CONTACTED GENE CRAFTON, TOWN CLERK.

TO REACH FROM THE INTERSECTION OF VT ROUTE 244 AND VT ROUTE 113 IN POST MILLS GO NORTH ALONG VT ROUTE 113 FOR 7.9 MI (12.7 KM) TO THE INTERSECTION OF VERSHIRE CENTER ROAD LEFT. TURN LEFT AND GO SOUTHEAST FOR 0.1 MI (0.2 KM) TO THE INTERSECTION OF A FIELD DRIVE LEFT AND A GRASSY GATED DRIVE RIGHT, JUST WEST OF A BARN. PARK VEHICLE. ENTER THE FIELD VIA THE FIELD DRIVE AND WALK SOUTH ABOUT 58 M (190.3 FT) TO THE SITE OF THE MARK. THE MARK IS SET 2 CM (1 INCH) BELOW GROUND SURFACE IN THE TOP OF A 0.3 M (1.0 FT) X 0.4 M (1.3 FT) ROCK OUTCROP. IT IS ABOUT 62 M (203.4 FT) SOUTHEAST OF AND 6 M (19.7 FT) HIGHER THAN CENTERLINE OF VERSHIRE CENTER ROAD.

TRAVERSE TIES

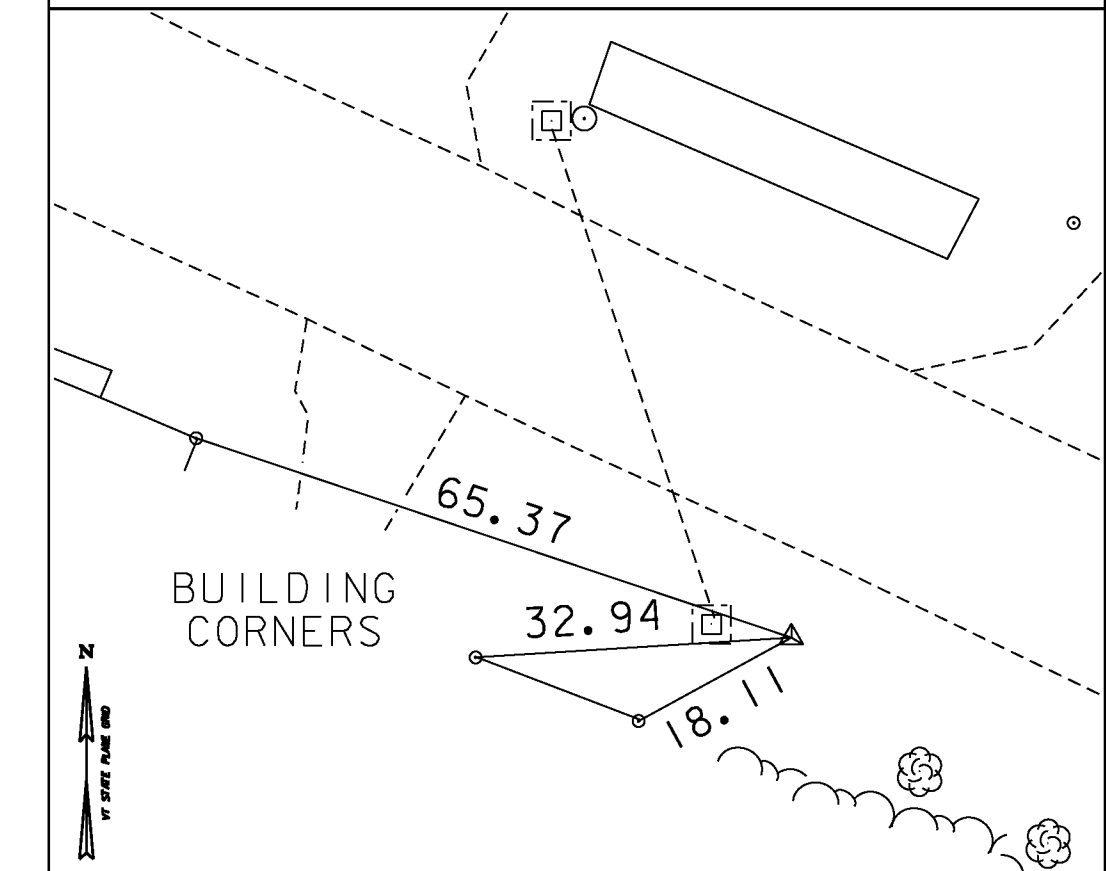
HVCTRL #2

NORTH = 536116.955  
 EAST = 1686543.600  
 ELEV. = 1221.191



HVCTRL #3

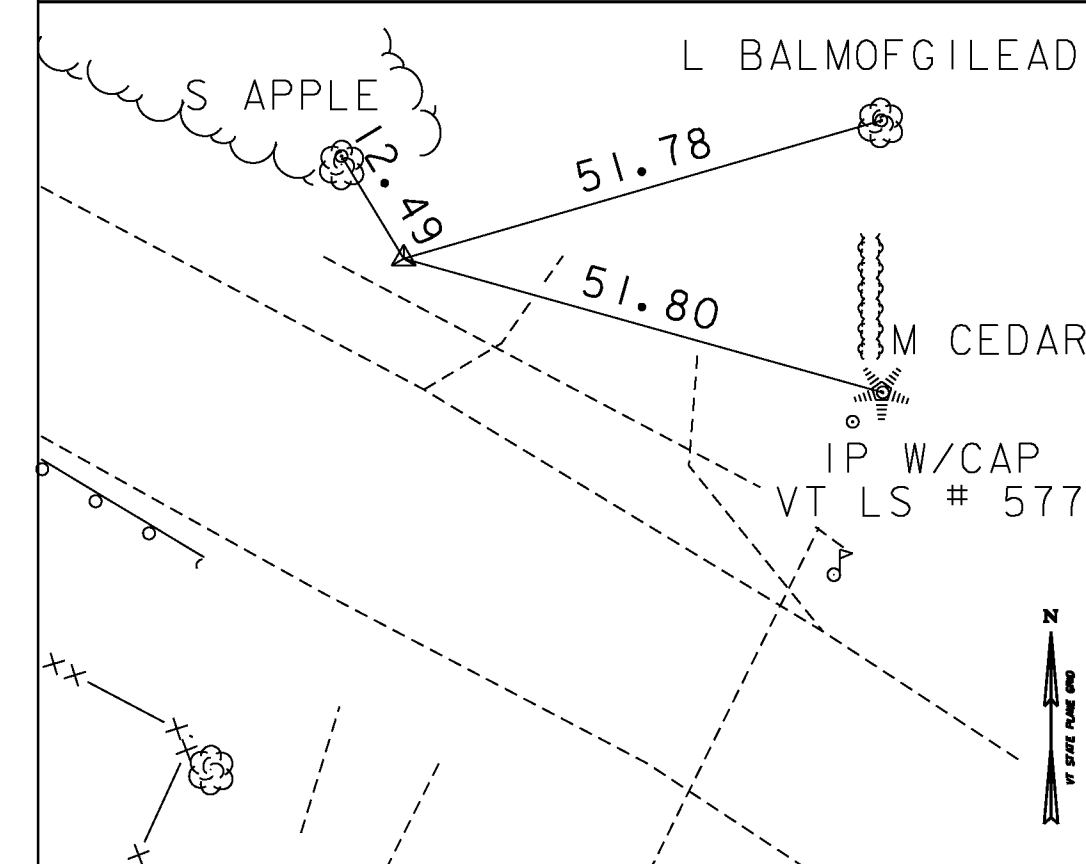
NORTH = 535827.273  
 EAST = 1687179.417  
 ELEV. = 1203.258



TRAVERSE TIES

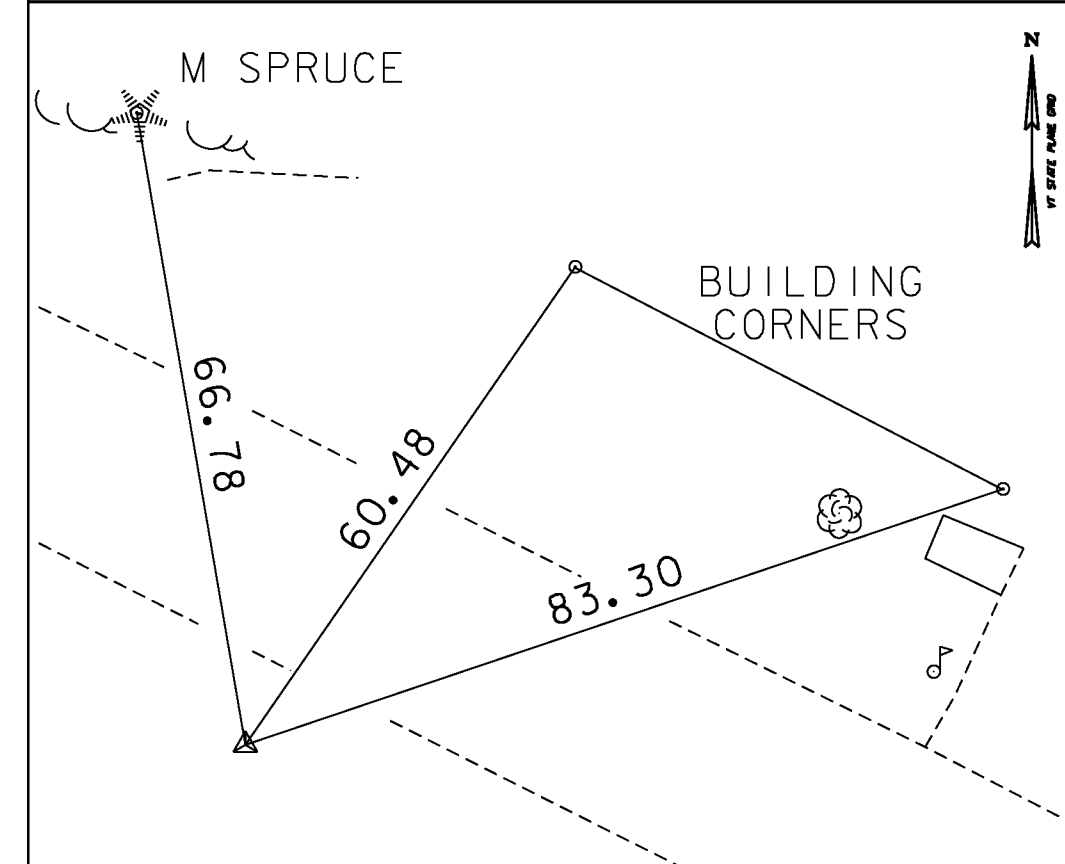
HVCTRL #4

NORTH = 535137.408  
 EAST = 1688929.420  
 ELEV. = 1149.308



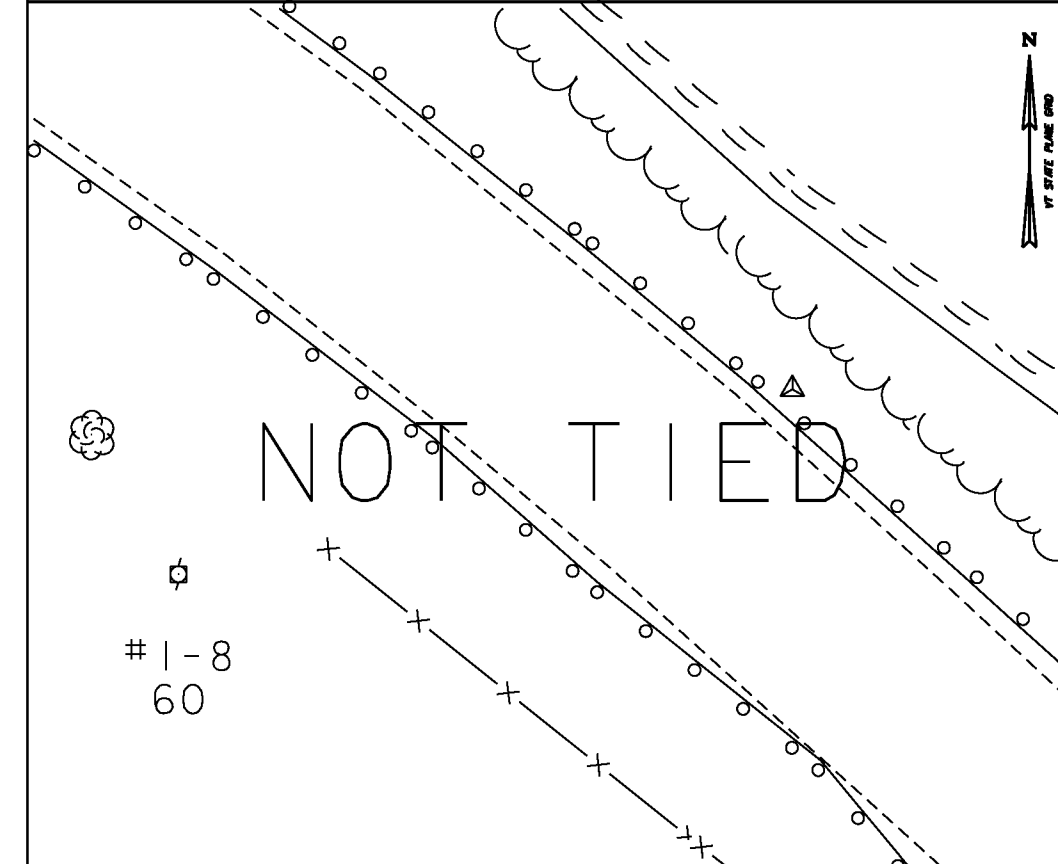
HVCTRL #5

NORTH = 534402.705  
 EAST = 1689885.759  
 ELEV. = 1111.175



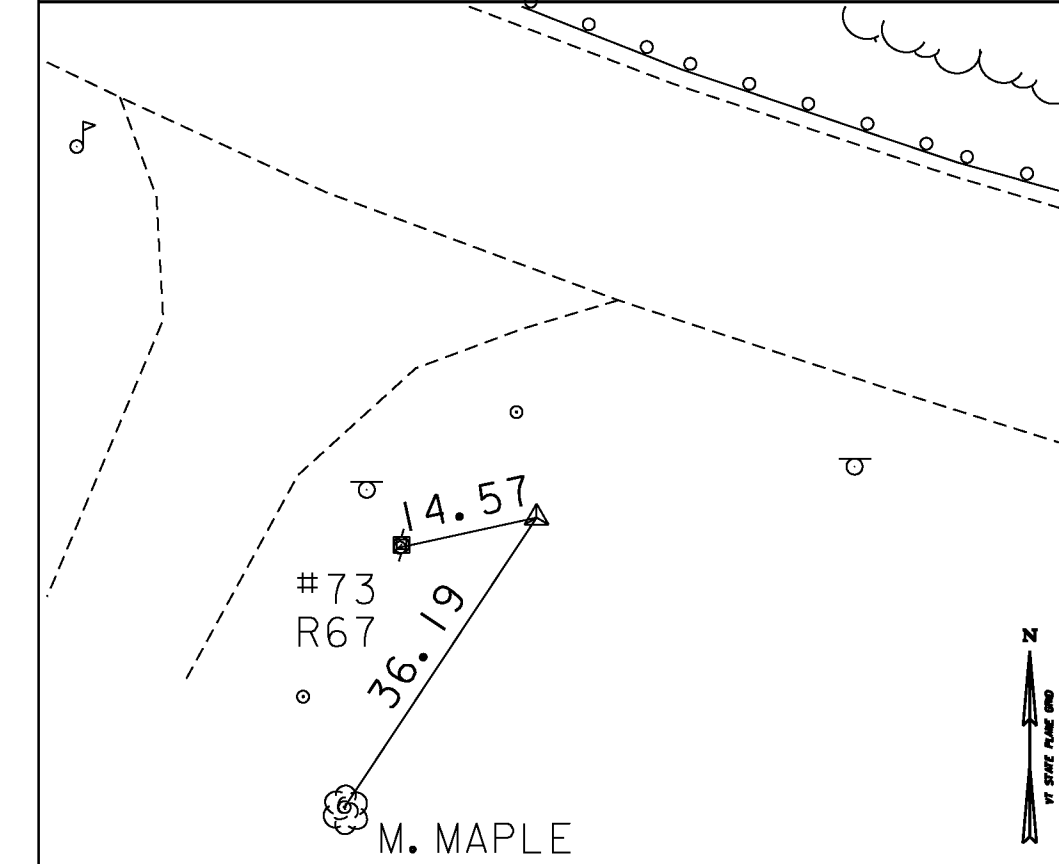
HVCTRL #6

NORTH = 534107.771  
 EAST = 1690483.005  
 ELEV. = 1095.098



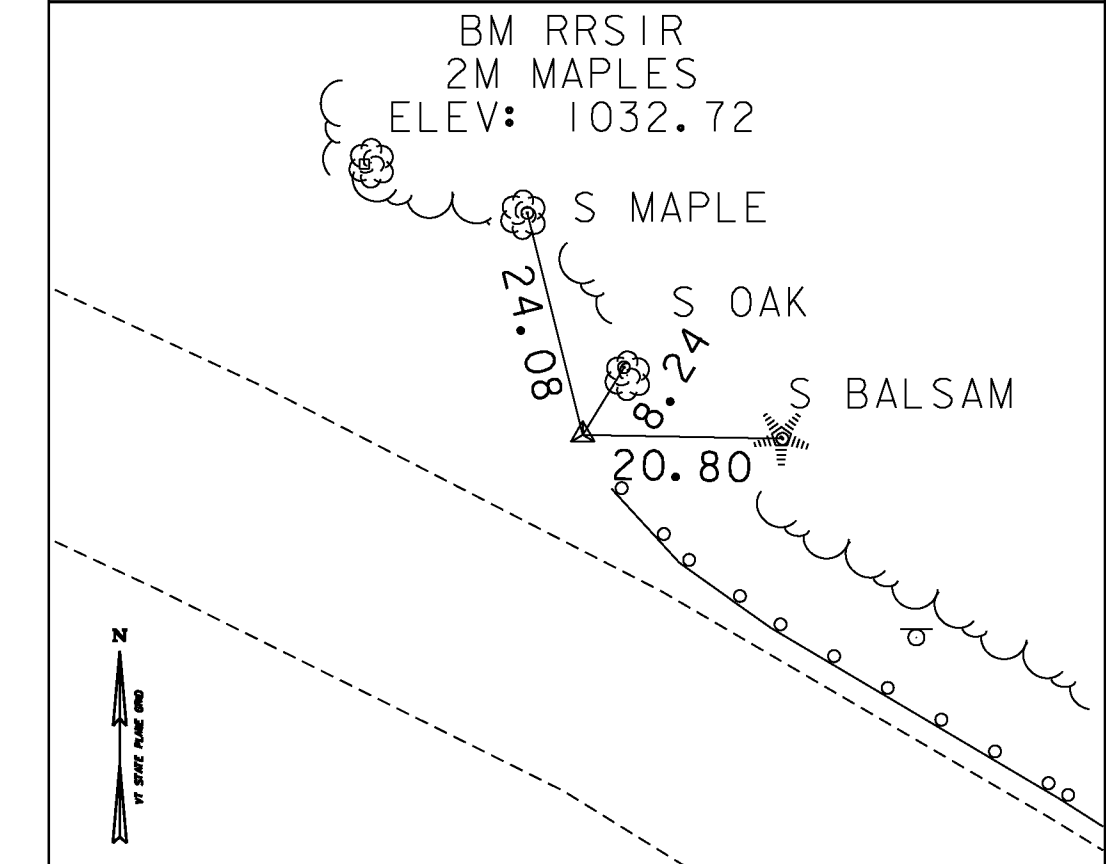
HVCTRL #7

NORTH = 533768.906  
 EAST = 1690850.052  
 ELEV. = 1080.546



HVCTRL #8

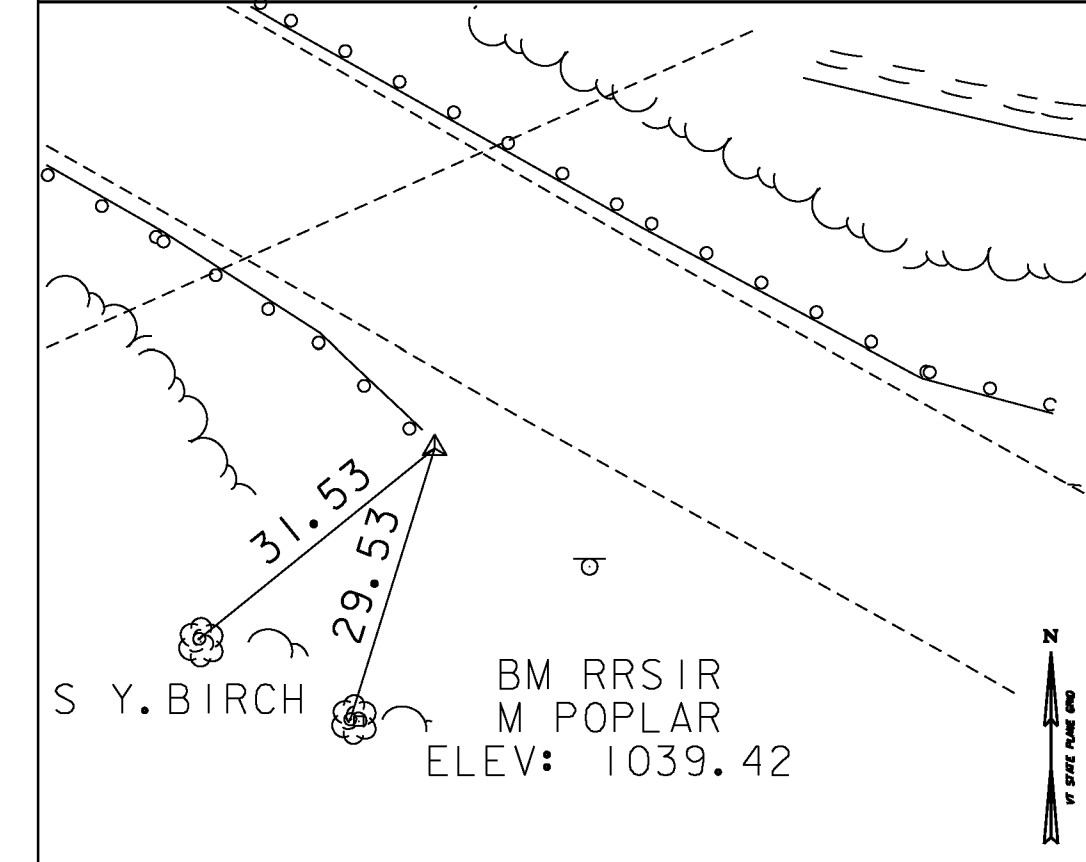
NORTH = 533673.243  
 EAST = 1691446.660  
 ELEV. = 1071.564



TRAVERSE TIES

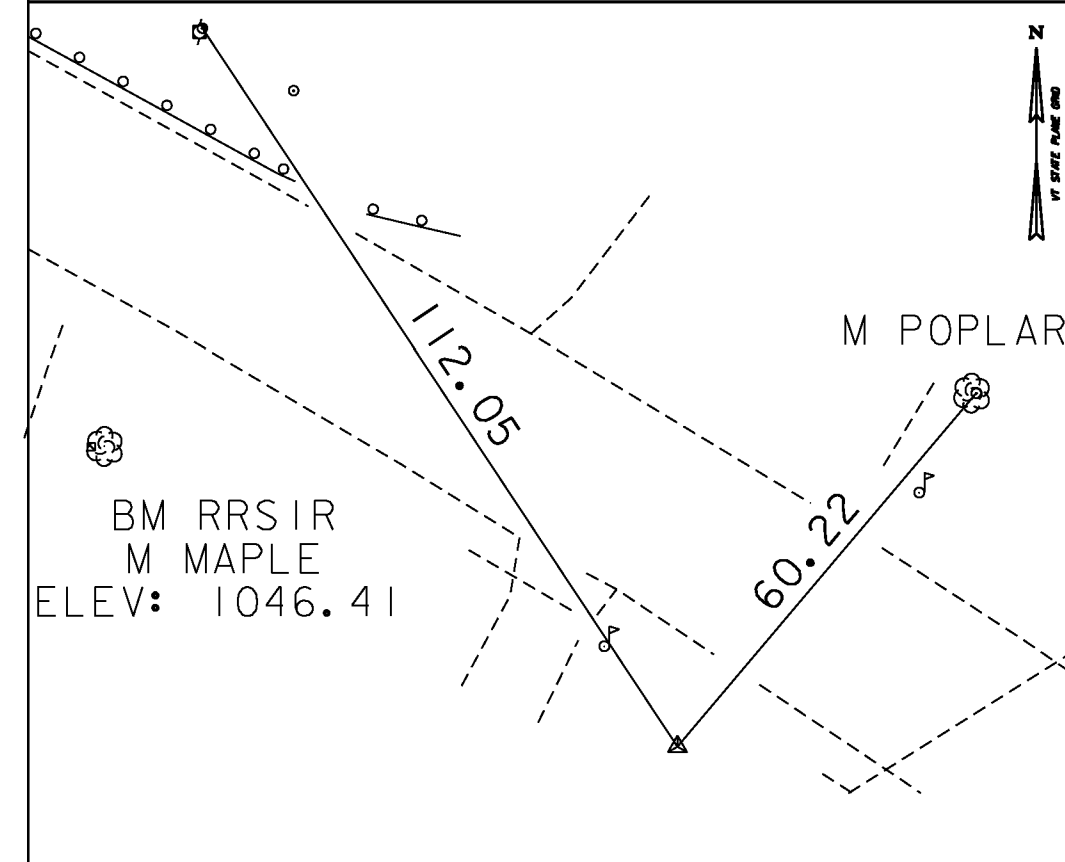
HVCTRL #9

NORTH = 532904.146  
 EAST = 1692466.498  
 ELEV. = 1041.471



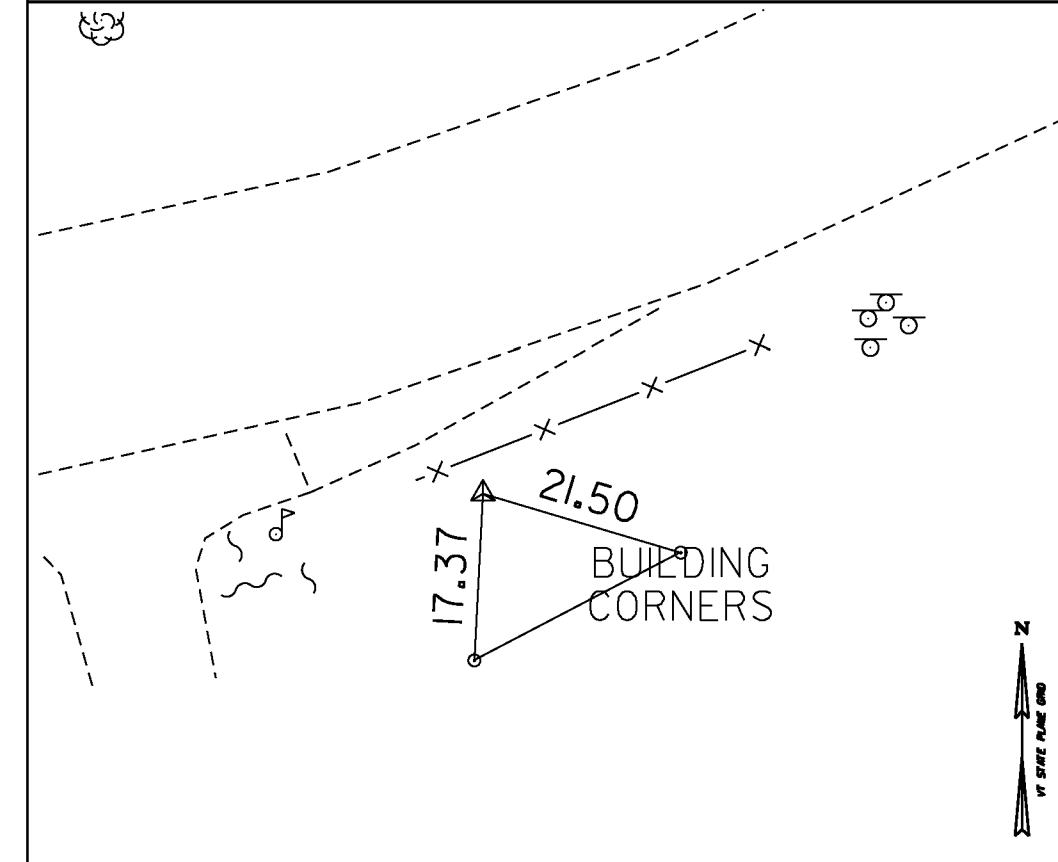
HVCTRL #10

NORTH = 532674.213  
 EAST = 1692862.758  
 ELEV. = 1041.491



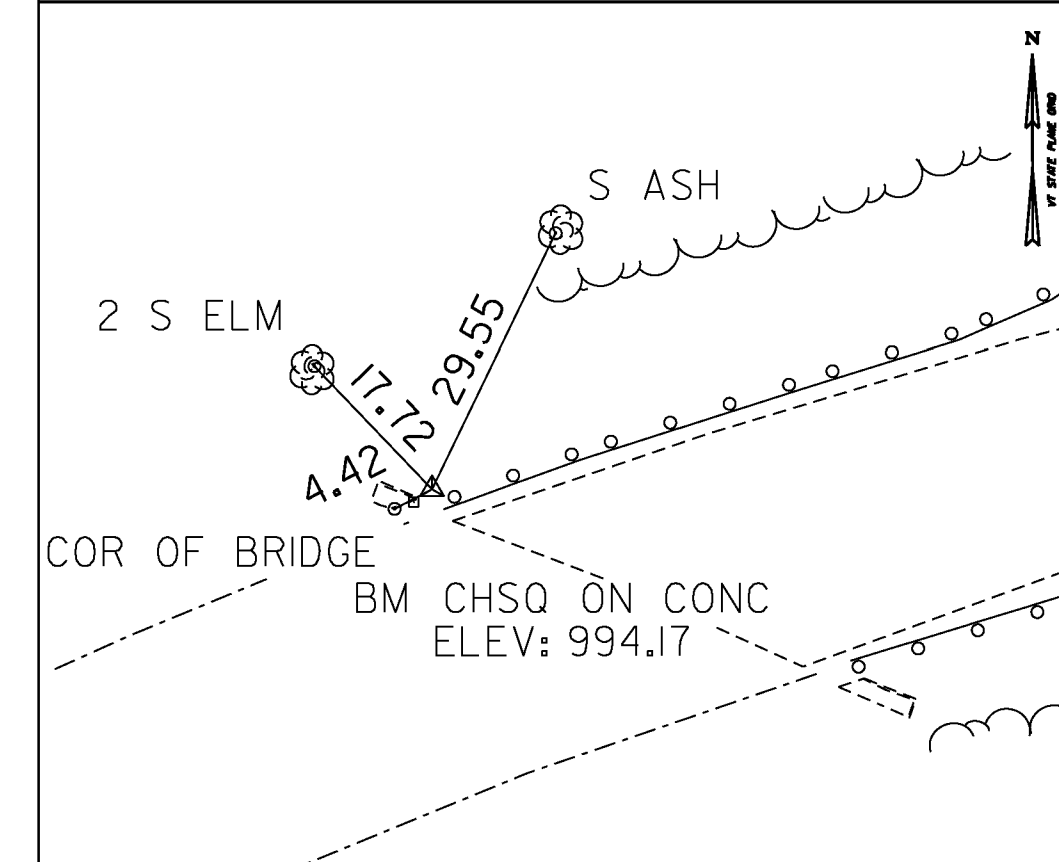
HVCTRL #11

NORTH = 532426.158  
 EAST = 1693484.357  
 ELEV. = 1012.628



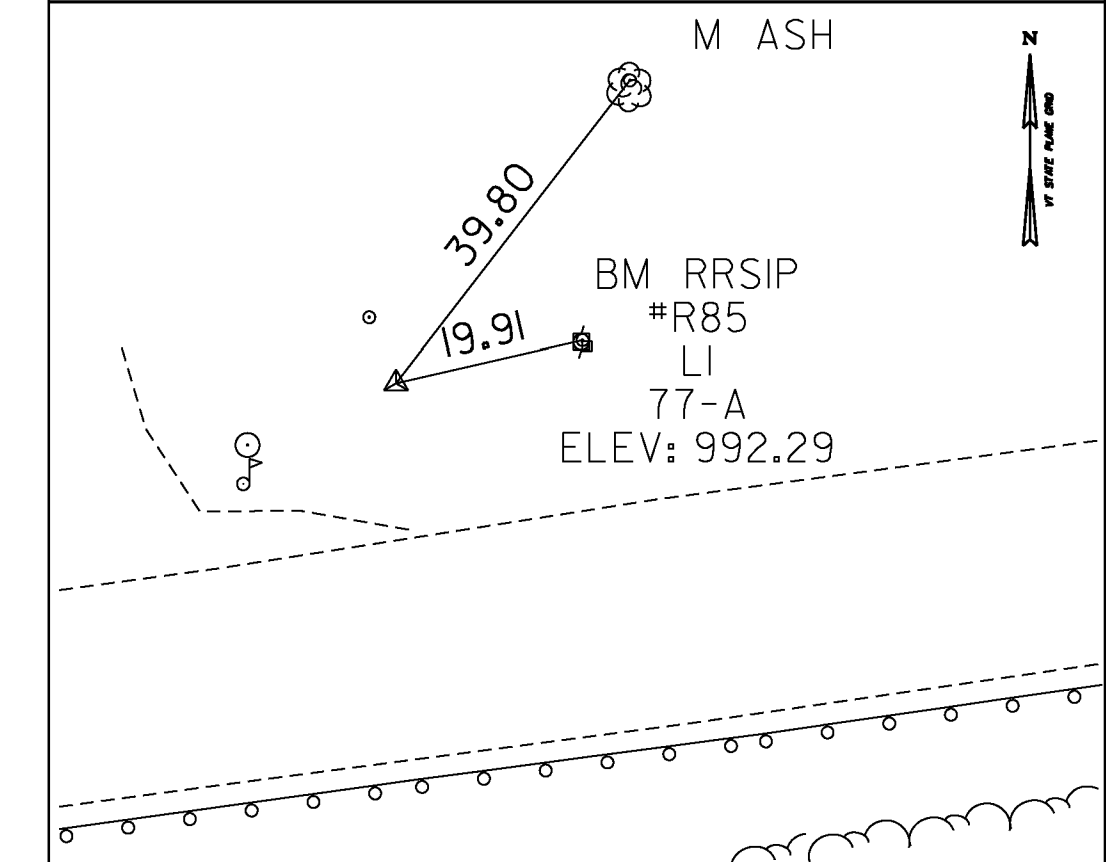
HVCTRL #12

NORTH = 533052.870  
 EAST = 1694385.483  
 ELEV. = 993.274



HVCTRL #13

NORTH = 533150.654  
 EAST = 1694868.740  
 ELEV. = 992.360



DATUM	
VERTICAL	NAVD 88
HORIZONTAL	NAD 83(07)
ADJUSTMENT	COMPASS

PROJECT NAME: VERSHIRE - THETFORD

PROJECT NUMBER: STP 2911 (I)

FILE NAME: survey\10c224t.dgn  
 PROJECT LEADER: MIKE FOWLER  
 DESIGNED BY: VTRANS

PLOT DATE: 1/29/2013  
 DRAWN BY: R. BULLOCK  
 CHECKED BY: VTRANS  
 SHEET 3 OF 232