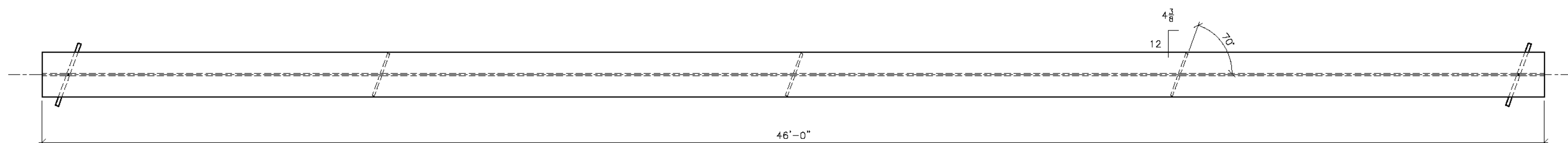
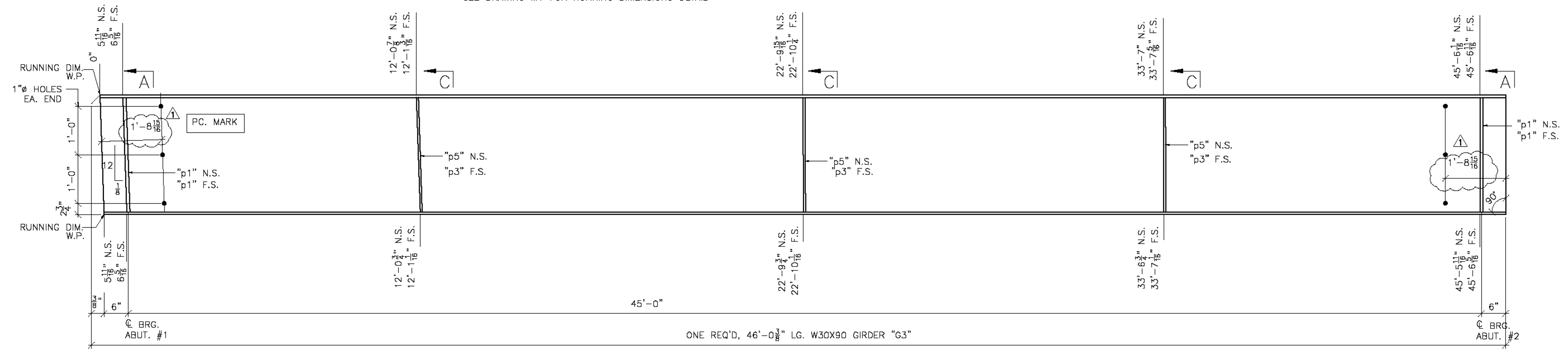


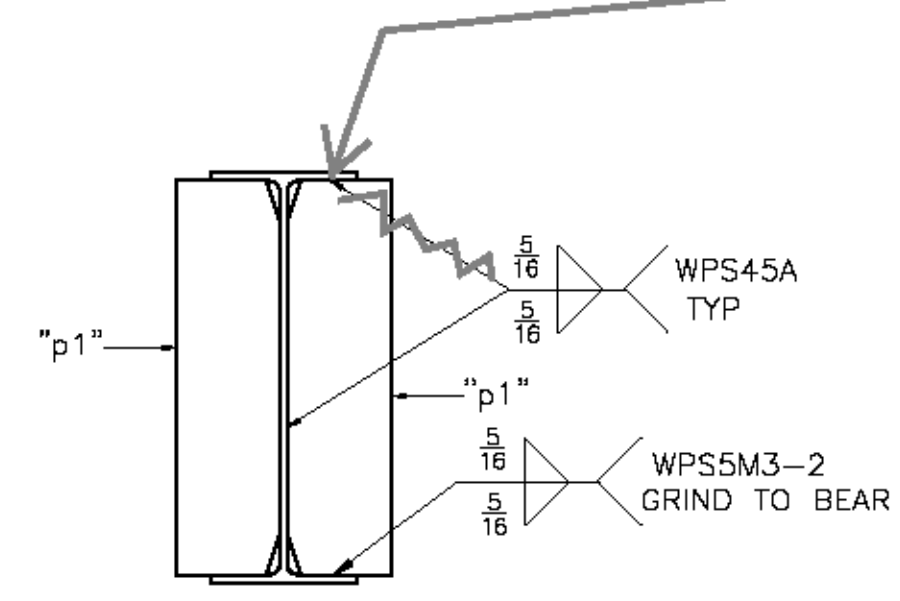
SHOP NOTE:
SEE DRAWING M1 FOR RUNNING DIMENSIONS DETAIL

TOP VIEW

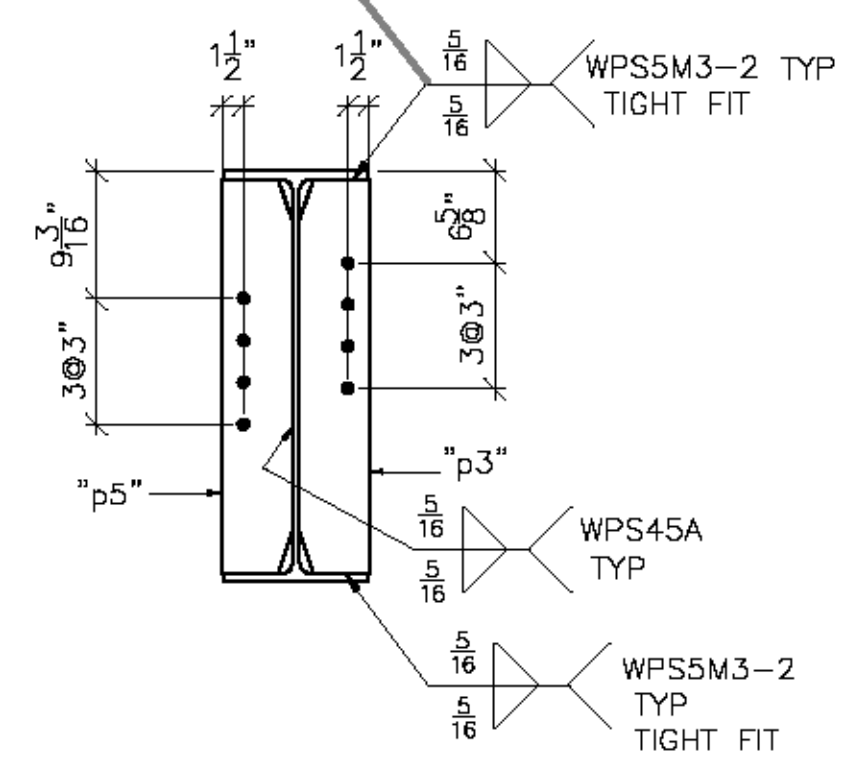


BOTTOM VIEW

Use this weld instead.
Typical of all beams



SECTION A



SECTION C

SHOP NOTE:
ENTIRE TOP FLANGE IS IN COMPRESSION
ENTIRE BOTT FLANGE IS IN TENSION

BILL OF MATERIAL							
SHIP	SHIP MARK	NO. PCS.	PIECE MARK	DESCRIPTION	LENGTH	REMARKS	WT.
1	G3			GIRDER	46'-0 1/8"	CVN	4436
		4	p1	SEE SHT. M1			4140
		3	p5	SEE SHT. M1			
		3	p3	SEE SHT. M1			

Vermont Agency of Transportation
RECEIVED

CK'D BY FDB OK'D BY CLB
May 29, 2015
RESUBMIT No Approved AsNoted
BY Carolyn Carlson DATE 06/02/15

REVISIONS			
NO	DATE	DESCRIPTION	BY

		ADVANCED RESOURCES & CONST. ENTERPRISES, INCORPORATED P.O. BOX 120 KINGFIELD, ME. 04847 PHONE: (207) 285-2646 - FAX: (207) 285-4054	
DRAFTER	JAC	STRINGER DETAILS, G3	PROJECT NO.
DATE	5/11/15	TOWN OF MIDDLESEX, VT 12 (RURAL MAJOR COLLECTOR)	15-114
CHECKED	JS	PROJECT NUMBER BRP 024-1(37)	DWG. NO.
DATE	5/14/15	G.C. AL ST. ONCE CONTRACTOR INC.	4

SEE SHEET M1 FOR CAMBER AND SECTIONS & DETAILS NOT SHOWN