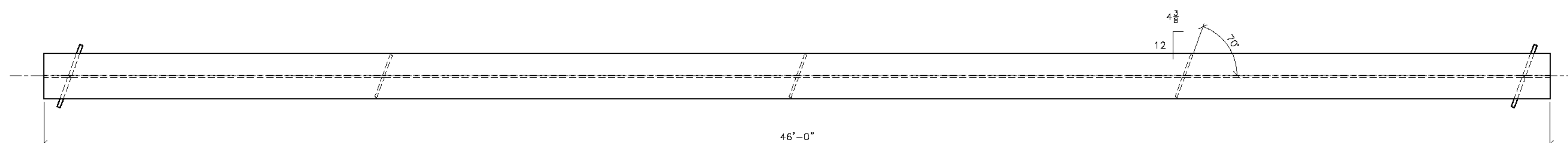
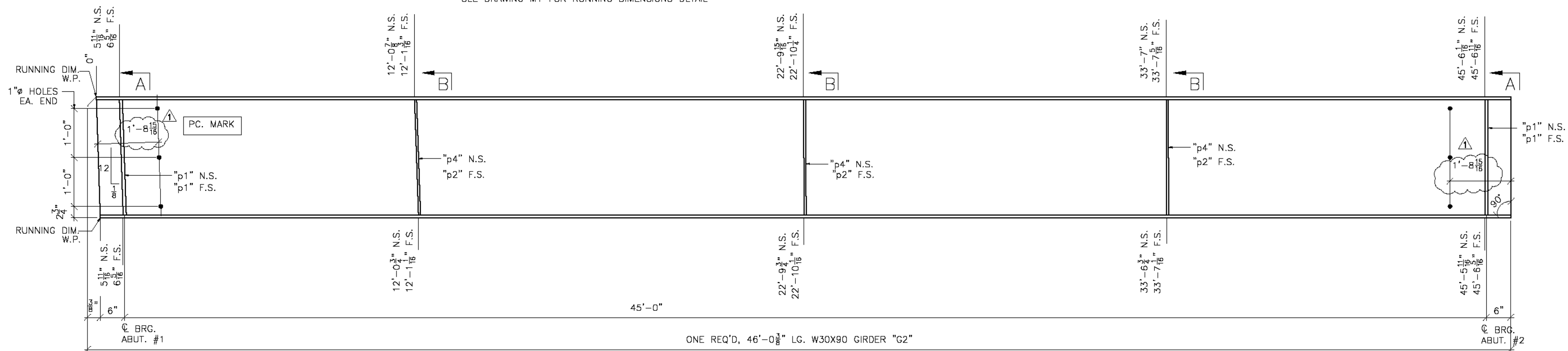
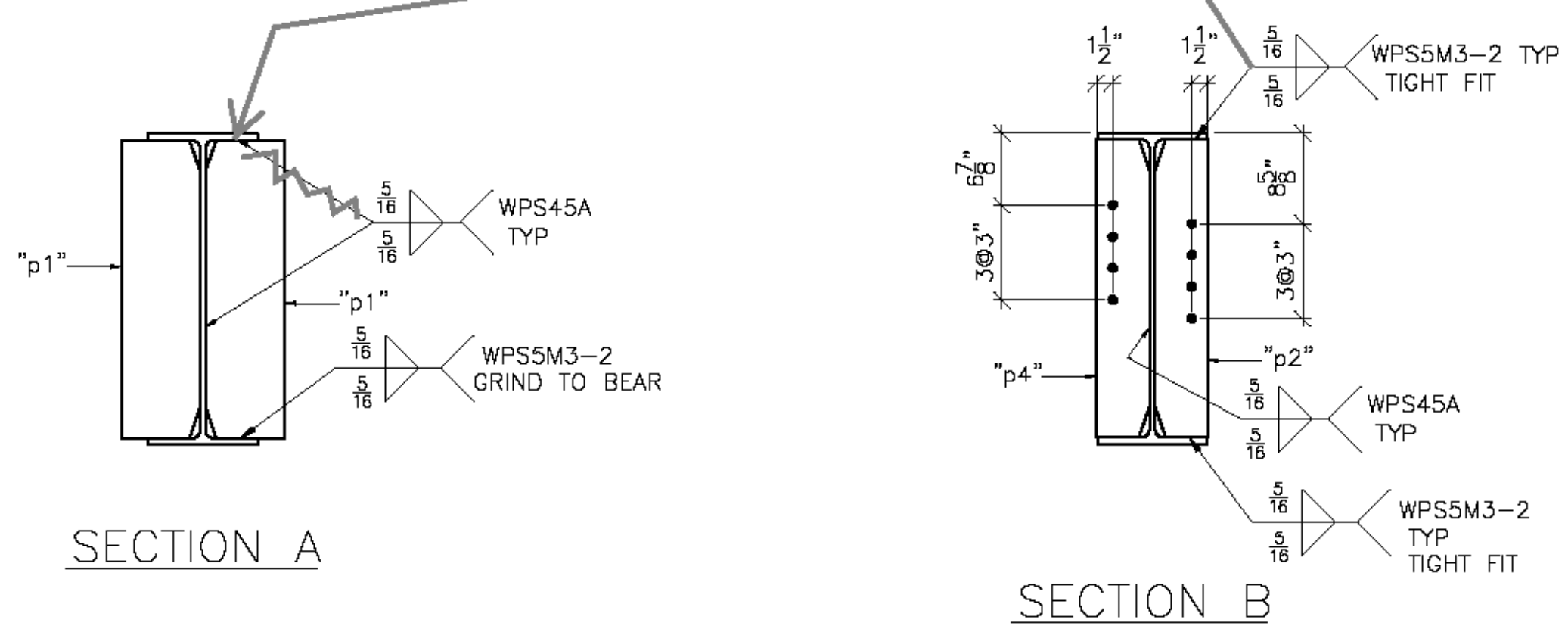


SHOP NOTE:
SEE DRAWING M1 FOR RUNNING DIMENSIONS DETAIL



Use this weld instead.
Typical of all beams



SHOP NOTE:
ENTIRE TOP FLANGE IS IN COMPRESSION
ENTIRE BOTT FLANGE IS IN TENSION

FINISH	GALVANIZED				
MATERIAL	AASHTO M270 (ASTM A709) GR. 50 U.O.N.				
HOLES	15/16" U.O.N.				
ELECTRODES					
WELDS	PER WPS				
SURFACE PREP	SSPC SP6		5/27/15	PER APPROVAL	JAC
			NO	DATE	DESCRIPTION
REVISIONS					
		ADVANCED RESOURCES & CONST. ENTERPRISES, INCORPORATED P.O. BOX 120 KINGFIELD, ME 04947 PHONE: (207) 265-2646 - FAX: (207) 265-4054			
DRAFTER	JAC	STRINGER DETAILS, G2			PROJECT NO.
DATE	5/11/15	TOWN OF MIDDLESEX, VT 12 (RURAL MAJOR COLLECTOR)			15-114
CHECKED	JS	PROJECT NUMBER BR# 024-1(37)			DWG. NO.
DATE	5/14/15	G.C. AL ST. ONCE CONTRACTOR INC.			3

BILL OF MATERIAL

SHIP	SHIP MARK	NO. PCS.	PIECE MARK	DESCRIPTION	LENGTH	REMARKS	WT.
1	G2			GIRDER	46'-0 3/8	CVN	4436
		1		W30X90			4140
		4	p1	SEE SHT. M1			
		3	p2	SEE SHT. M1			
		3	p4	SEE SHT. M1			

Vermont Agency of Transportation
RECEIVED
 CK'D BY FDB OK'D BY CLB
 May 29, 2015
 RESUBMIT No Approved AsNoted
 BY Carolyn Carlson DATE 06/02/15

SEE SHEET M1 FOR CAMBER AND SECTIONS & DETAILS NOT SHOWN