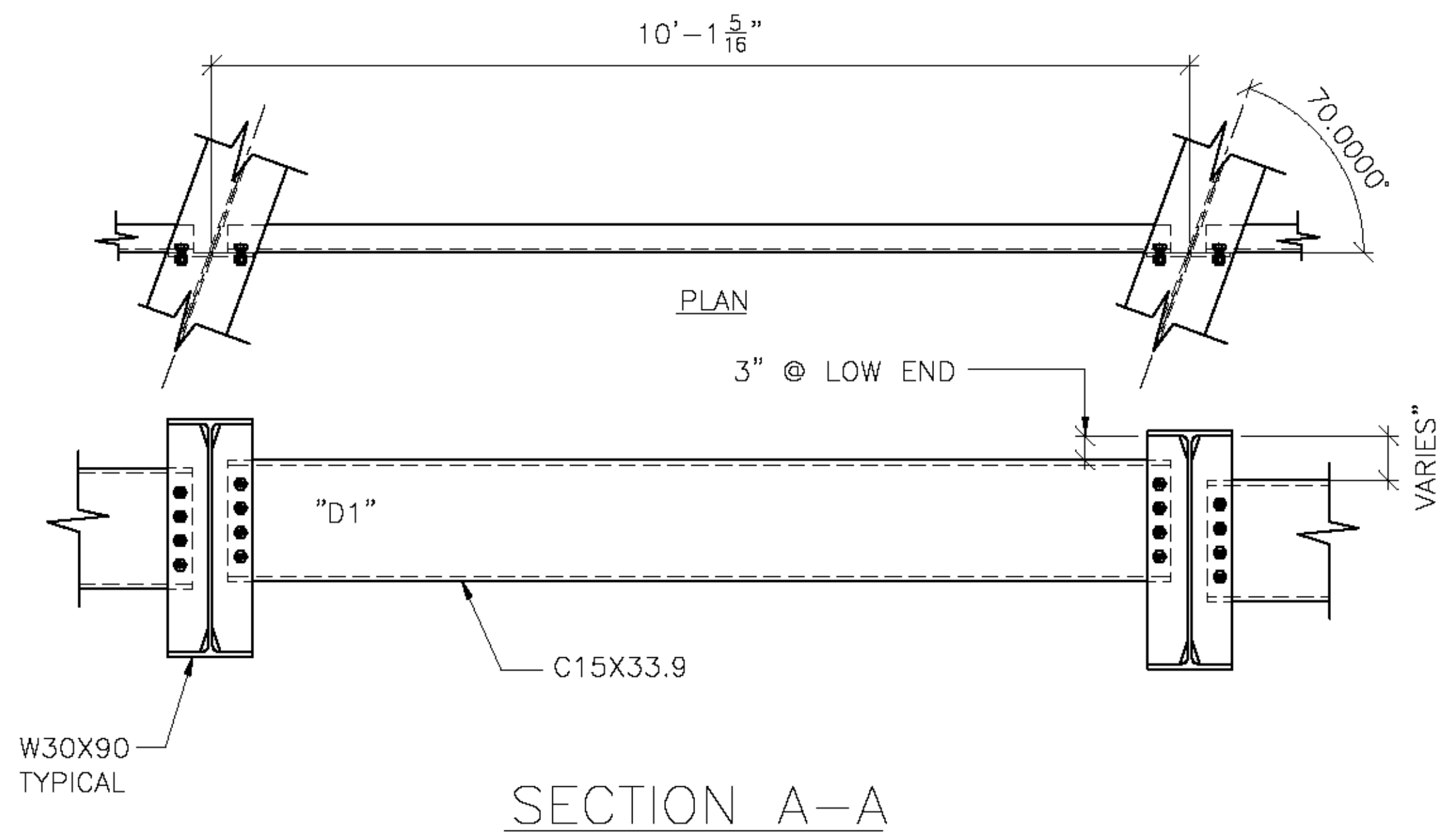


FRAMING PLAN

GENERAL NOTES:

- ALL MATERIALS AND CONSTRUCTION SHALL CONFORM TO STATE OF VERMONT AGENCY OF TRANSPORTATION'S STANDARD SPECIFICATIONS FOR CONSTRUCTION, DATED 2011, AND IT'S LATEST REVISIONS, AND THE AASHTO LRFD BRIDGE DESIGN SPECIFICATIONS, 5TH EDITION AND IT'S LATEST REVISIONS.
- ALL MATERIAL SHALL CONFORM TO AASHTO M270 (ASTM A709) GRADE 50. ALL MATERIAL NOTED "CVN" SHALL MEET THE CHARPY V-NOTCH TESTING REQUIREMENTS OF ZONE 2, H FREQUENCY: 15 FT.-LB AT 40' F. NDT MUST BE ACCORDING TO ANSI/AASHTO/AWS D1.5, SECTION 6
- ALL BOLTS SHALL BE 7/8"Ø IN 15/16"Ø HOLES AND CONFORMING TO ASTM A325, TYPE 1 WITH RO-CAP TESTING AND MECHANICALLY GALVANIZED. INCLUDING ADDITIONAL BOLT TESTING PER VTRANS SUBSECTION 714.05
- ALL STEEL SHALL BE GALVANIZED IN ACCORDANCE WITH VTRANS SUBSECTION 726.08 AFTER FABRICATION.



SECTION A-A

FIELD BOLT LIST

MARK	QTY.	DESCRIPTION	LOCATION
FB3	72	7/8"Ø X 2 1/4"	INTER. DIAPH. TO CONN. PL
	72	DIRECT TENSION INDICATORS + THREE (3) TEST ASSEMBLIES	

Vermont Agency of Transportation
RECEIVED
 CK'D BY FDB OK'D BY CLB
 May 29, 2015
 RESUBMIT No Approved AsNoted
 BY Carolyn Carlson DATE 06/02/15

FINISH				
MATERIAL	SEE DETAIL SHEETS			
HOLES				
ELECTRODES				
WELDS	PER WPS			
SURFACE PREP		5/27/15	PER APPROVAL	JAC
	NO	DATE	DESCRIPTION	BY
REVISIONS				
		ADVANCED RESOURCES & CONST. ENTERPRISES, INCORPORATED P.O. BOX 120 KINGFIELD, ME 04947 PHONE: (207) 285-2848 - FAX: (207) 285-4054		
DRAFTER	JAC	FRAMING PLAN	PROJECT NO. 15-114	
DATE	5/11/15	TOWN OF MIDDLESEX, VT 12 (RURAL MAJOR COLLECTOR)	DWG. NO. 1	
CHECKED	JS	PROJECT NUMBER BR 024-1(37)		
DATE	5/14/15	AL ST. ONGE CONTRACTOR, INC.		

J.A.C. DRAFTING/S55B15/1